



THE DATASHEET OF SS-01GLPB



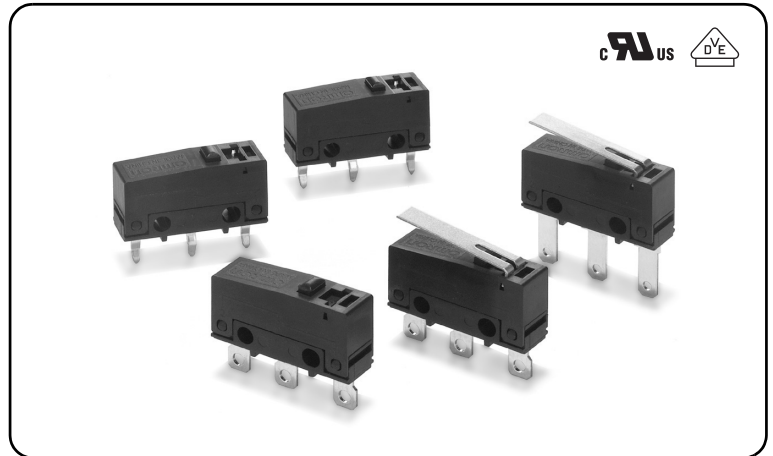
SS-P

Subminiature Basic Switch

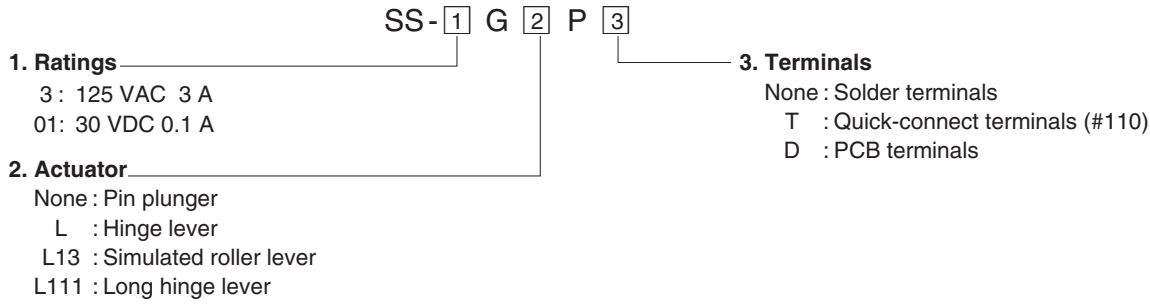
SS Series Compatible Mounting with a Simple Construction and Easy-to-Use Design Concept

- One-piece terminal construction to keep out flux.
- A single leaf movable spring construction.
- Conforms to North American and European safety Standards.
- 1 mm MIN Contact Gap Models available for Interlock applications

RoHS Compliant



Model Number Legend



List of Models

●0.5 mm Contact Gap Models

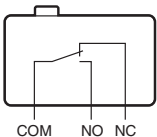
Ratings	Actuator	Terminals	Solder terminals	Quick-connect terminals (#110)	PCB terminals
3A	Pin plunger		SS-3GP	SS-3GPT	SS-3GPD
	Hinge lever		SS-3GLP	SS-3GLPT	SS-3GLPD
	Simulated roller lever		SS-3GL13P	SS-3GL13PT	SS-3GL13PD
0.1A	Pin plunger		SS-01GP	SS-01GPT	SS-01GPD
	Hinge lever		SS-01GLP	SS-01GLPT	SS-01GLPD
	Simulated roller lever		SS-01GL13P	SS-01GL13PT	SS-01GL13PD

●1 mm MIN Contact Gap Models

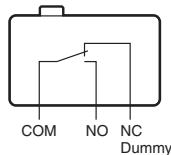
Ratings	Actuator	Terminals Contact form	Solder terminals	Quick-connect terminals (#110)
3A	Long hinge lever	SPST-NO	SS-3FL111P-3	SS-3FL111P-3T

Contact Form

●SPDT



●SPST-NO (SS-3FP models)



Separator (Sold Separately), Terminal Connector (Sold Separately) ➔ Refer to "Basic Switch Common Accessories"

Contact Specifications

Item	Model	SS-3P models	SS-01P models	SS-3FP models
Contact	Specification	Rivet	Crossbar	Rivet
	Material	Silver	Gold alloy	Silver
	Gap (standard value)	0.5 mm	0.5 mm	1 mm min.
Inrush current	NC	9 A max.	-	9 A max.
	NO			
Minimum applicable load (reference value) *		5 VDC 160 mA	5 VDC 1 mA	5 VDC 160 mA

* Please refer to "Using Micro Loads" in "●Precautions" for more information on the minimum applicable load.

Ratings

Rated voltage	Model	SS-3P / SS-3FP models	SS-01P models
	Item	Resistive load	
125 VAC		3 A	0.1 A
30 VDC		3 A	0.1 A

Note 1. The above rating values apply under the following test conditions.

- (1) Ambient temperature: 20±2°C
- (2) Ambient humidity: 65±5%
- (3) Operating frequency: 20 operations/min

Note 2. Consult your OMRON sales representative for information on models for other loads.

Characteristics

Item	Model	SS-3P models	SS-01P models	SS-3FP models
Permissible operating speed		0.1 mm to 1 m/s (for pin plunger models)		
Permissible operating frequency	Mechanical	300 operations/min		
	Electrical	30 operations/min		
Insulation resistance		100 MΩ min. (at 500 VDC with insulation tester)		
Contact resistance (initial value)		50 mΩ max.	100 mΩ max.	50 mΩ max.
Dielectric strength *1	Between terminals of the same polarity	1,000 VAC 50/60 Hz for 1 min		
	Between current-carrying metal parts and ground	1,500 VAC 50/60 Hz for 1 min		
	Between each terminals and non-current-carrying metal parts	1,500 VAC 50/60 Hz for 1 min		
Vibration resistance *2	Malfunction	10 to 55 Hz, 1.5 mm double amplitude		
Shock resistance	Durability	1,000 m/s ² {approx. 100G} max.		
	Malfunction *2	300 m/s ² {approx. 30G} max.		
Durability *3	Mechanical	1,000,000 operations min. (60 operations/min)		100,000 operations min. (60 operations/min)
		70,000 operations min. (20 operations/min, 125 VAC)	200,000 operations min. (20 operations/min)	100,000 operations min. (20 operations/min, 30 VDC)
	Electrical	100,000 operations min. (20 operations/min, 30 VDC)		
Degree of protection		IEC IP40		
Degree of protection against electric shock		Class I		
Proof tracking index (PTI)		250		
Ambient operating temperature		-25°C to +85°C (at ambient humidity of 60% max.) (with no icing or condensation)		
Ambient operating humidity		85% max. (for +5 to +35°C)		
Weight		Approx. 1.6 g (pin plunger models)		

Note. The data given above are initial values.

*1. The values for dielectric strength shown are for models with a Separator (refer to "Micro Switch Common Accessories").

*2. The values are at Free Position and Total Travel Position values for pin plunger, and Total Travel Position value for lever. Close or open circuit of the contact is 1 ms max.

*3. For testing conditions, consult your OMRON sales representative.

Approved Safety Standards

UL (UL1054/CSA C22.2 No.55)

Rated voltage	Model	SS-3P / SS-3FP	SS-01P
Item	Resistive load		
125 VAC		3 A	0.1 A
30 VDC		3 A	0.1 A

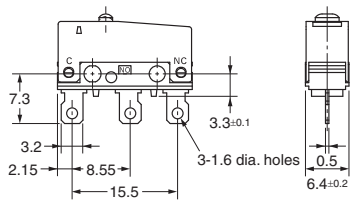
VDE (EN61058-1)

Rated voltage	Model	SS-3P / SS-3FP	SS-01P
125 VAC		3 A	0.1 A
30 VDC		3 A	0.1 A

Testing conditions: 5E4 (50,000 operations) T55 (0 to 55°C)

Terminals/Apearances (Unit: mm)

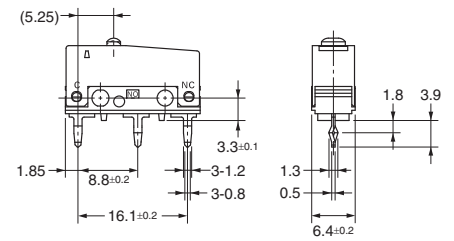
●Solder terminals



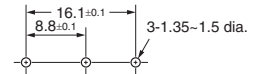
●Quick Connect Terminals (#110)



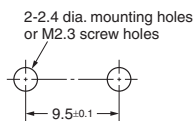
●PCB terminals



<PCB Mounting Dimensions (Reference)>



Mounting Holes (Unit: mm)

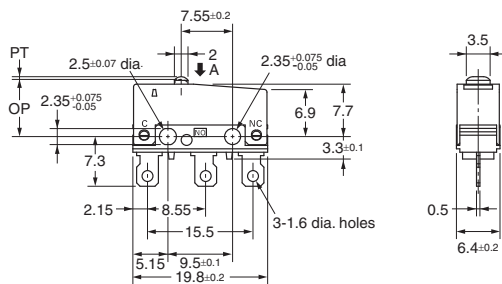


Dimensions (Unit: mm) and Operating Characteristics

The illustrations and dimensions are for models with solder terminals. Refer to "Terminals/Apearances" for details on models with quick connect terminals (#110) or PCB terminals.

●Pin plunger

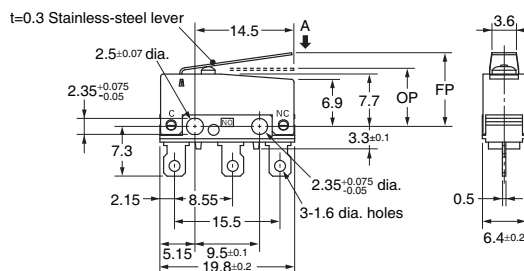
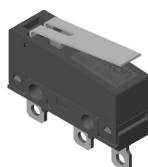
SS-3GP
SS-01GP



Operating characteristics	Model	SS-3GP	SS-01GP
Operating Force	OF Max.	1.50 N {153 gf}	
Releasing Force	RF Min.	0.2 N {20 gf}	
Pretravel	PT Max.	0.6 mm	
Overtravel	OT Min.	0.4 mm	
Movement Differential	MD Max.	0.15 mm	
Operating Position	OP	8.4±0.3 mm	

●Hinge lever

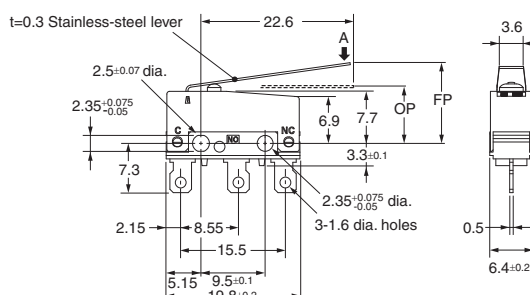
SS-3GLP
SS-01GLP



Operating characteristics	Model	SS-3GLP	SS-01GLP
Operating Force	OF Max.	0.5 N {51 gf}	
Releasing Force	RF Min.	0.05 N {5 gf}	
Overtravel	OT Min.	1.0 mm	
Movement Differential	MD Max.	0.8 mm	
Free Position	FP Max.	13.6 mm	
Operating Position	OP	8.8±0.8 mm	

●Long hinge lever

SS-3FL11P-3



Operating characteristics	Model	SS-3FL11P-3
Operating Force	OF Max.	0.55 N {56 gf}
Releasing Force	RF Min.	0.01 N {1 gf}
Overtravel	OT Min.	1.0 mm
Movement Differential	MD Max.	3.0 mm
Free Position	FP Max.	16.8 mm
Operating Position	OP	8.8±1.5 mm

Note 1. Unless otherwise specified, a tolerance of ±0.4 mm applies to all dimensions.
Note 2. The operating characteristics are for operation in the A direction (↓).



SS-P

- Application examples provided in this document are for reference only. In actual applications, confirm equipment functions and safety before using the product.
- Consult your OMRON representative before using the product under conditions which are not described in the manual or applying the product to nuclear control systems, railroad systems, aviation systems, vehicles, combustion systems, medical equipment, amusement machines, safety equipment, and other systems or equipment that may have a serious influence on lives and property if used improperly. Make sure that the ratings and performance characteristics of the product provide a margin of safety for the system or equipment, and be sure to provide the system or equipment with double safety mechanisms.

Note: Do not use this document to operate the Unit.

Looking for pricing, stock, or lifecycle information?

Click below to explore more details on WIN SOURCE:

-  [View SS-01GLPB on WIN SOURCE](#)
-  [Omron Information](#)

Optimize Your Supply Chain with WIN SOURCE Solutions

-  Global Sourcing Solution
-  Obsolete Management
-  Cost Control Management
-  Shortage Management
-  Alternative Solution
-  Excess Inventory Management