



**THE DATASHEET OF  
SER2LBKRDYEAUEE**

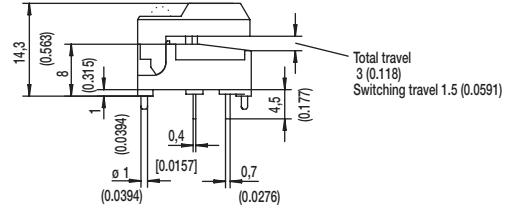
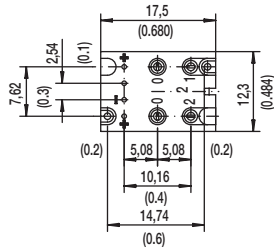




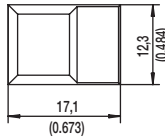
# DIGITAST Microminiature SPDT, Key Switches

## DESIGNATION

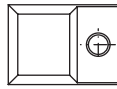
### SER NARROW BUTTON



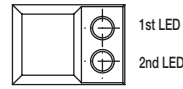
SER



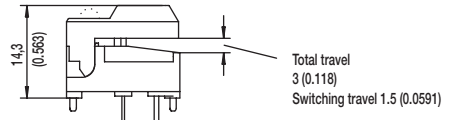
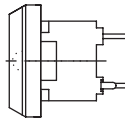
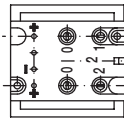
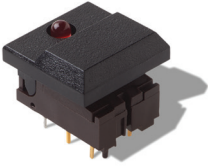
SERL



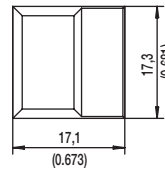
SER2L



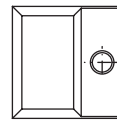
### SET WIDE BUTTON



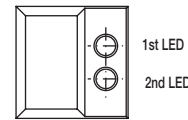
SET



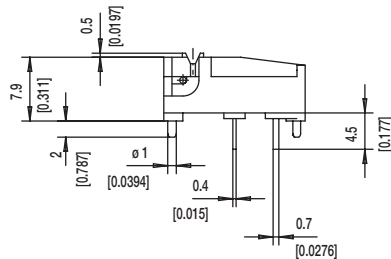
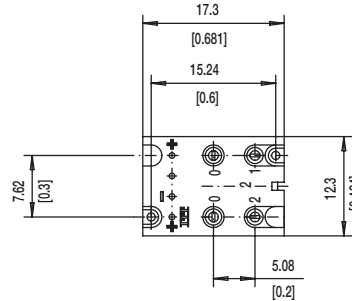
SETL



SET2L



### SERU NO BUTTON



# DIGITAST Microminiature SPDT, Key Switches

## LED

### NONE NO LED

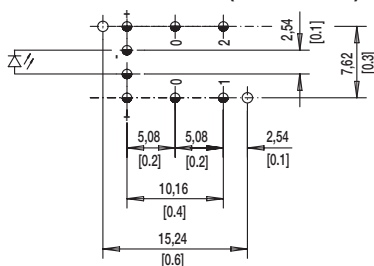


### L 1 LEDS

#### 7.62 mm Spacing (TYP No. America)



#### NARROW SPACING (TYP EUROPE)



TOP VIEW OF PCB

### 2L 2 LEDS



$\varnothing 1.0 \pm 0.1$  (0.0394 ± 0.00349)

$\varnothing 1.1 \pm 0.05$  (0.0433 ± 0.00197)

## BUTTON COLOR

**BK** BLACK

**GY** GRAY

Other button colors available by request [red (RD), green (GN), white (WH), yellow (YE), blue (BU), orange (OG)].

## LED COLOR

| OPTION CODE | COLOR              |
|-------------|--------------------|
| <b>NONE</b> | Models without LED |
| <b>RD</b>   | Red                |
| <b>GN</b>   | Green              |
| <b>YE</b>   | Yellow             |

## CONTACT MATERIAL

| OPTION CODE | MATERIAL |
|-------------|----------|
| <b>AU</b>   | Gold     |

## FUNCTION

| OPTION CODE | COLOR     | SCHEMATIC  |
|-------------|-----------|--|
| <b>OA</b>   | Momentary |  |
| <b>EE</b>   | Push-Push |  |



Dimensions are shown: mm  
Specifications and dimensions subject to change

## Looking for pricing, stock, or lifecycle information?

Click below to explore more details on WIN SOURCE:

- ⊖ View [SER2LBKRDYEAJEE](#) on WIN SOURCE
- ⊖ [C&K Components](#) Information

## Optimize Your Supply Chain with WIN SOURCE Solutions

- ✓ Global Sourcing Solution
- ✓ Obsolete Management
- ✓ Cost Control Management
- ✓ Shortage Management
- ✓ Alternative Solution
- ✓ Excess Inventory Management