



**THE DATASHEET OF  
SK-23H11-G 9 S**



附表

COMAX ITEM NO.	SONY PART NO.	KNOB COLOR	PAGE
SK-23H11-G 9 S	1-762-356-__	BLACK	2 of 6

1. Scope 适用范围

This specification applies to the signal selector switch(slide type)used in electronic equipment  
本规格适用于一般电子设备的信号选择开关(滑动类)

2. Construction 构造

2.1 Circuit arrangement 回路构成

Line(s) 2 列 Pole(s) 2 回路 Position(s) 3 接点 stroke 4 行程

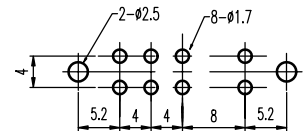
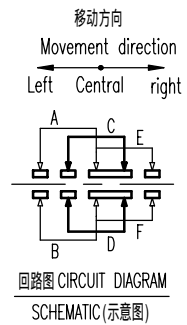
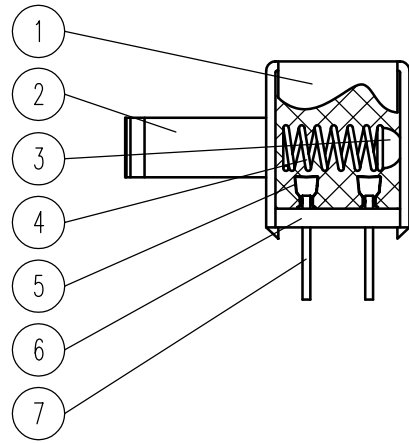
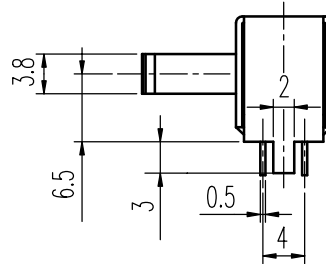
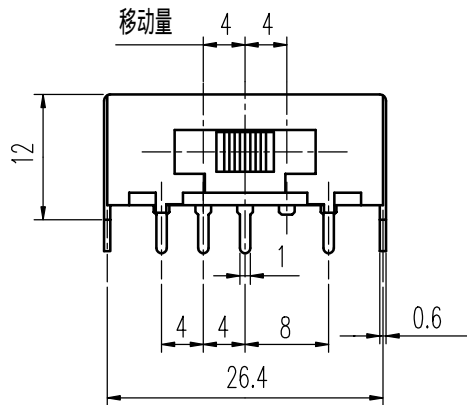
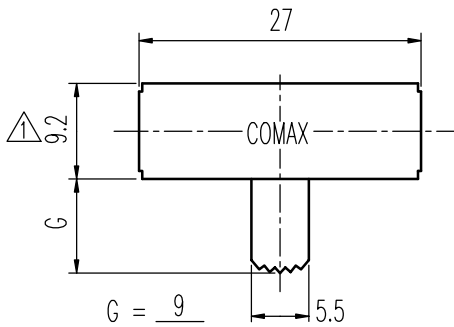
2.2 Changeover timing 切换类型

Shorting 先导通后断开  Non-shorting 先断开后导通  Not specified 无要求

2.3 Click 响声

Required 有  Unrequired 无

2.4 Dimensions and materials 寸法·材料



基板孔参考图 (指定外公差±0.05)

7	端子 TERMINAL	C2680R-H	8	WHITE	镀银0.5um 最小, Ag 0.5um Min
6	基板 TERMINAL BASE	PHENOLIC RESIN SD-168C	1	BLACK	_____
5	接触片 CONTACT	C5210R-EH/Ag	2	YELLOW/WHITE	_____
4	弹簧 SPRING	STEEL	1	BLACK	NATURAL
3	钢珠 STEEL BALL	STEEL	1	SILVERY	NATURAL
2	胶柄 KNOB	POM F30-03 ①	1	BLACK	_____
1	铁壳 FRAME	SPCC	1	SILVERY	铜底1.0um 最小, 镀镍 2.0um 最小 MB: Cu 1.0um Min, Ni 2.0um Min
序NO.	零件 PART	材料 MATERIAL	数量 QTY	颜色 COLOR	表面处理 SURF FINISH



A03	POM F30-02 → POM F30-03, 见①	张渠江	2007-10-27
A02	修改材料表栏, 见①	杨蝶	2007-08-01
A01		曹文斌	2006-08-10
标号REV	内容 DESCRIPTION	签名 SIGN.	日期 DATE

TOLERANCES UNLESS OTHERWISE SPEC.		TITLE SIDE KNOB SLIDE SWITCH	ITEM NO SK-23H11-G 9 S	DWG NO. ITEM2703		
L ≤ 4	± 0.20			DRAWN 张渠江	VERSION A03	PAGE 1 OF 1
4 < L ≤ 16	± 0.30					
16 < L ≤ 63	± 0.40			REVIEWED 张念明	SCALE	UNIT mm
63 < L ≤ 250	± 0.50					
250 < L	± 0.70	APPROVED 程先金	PROJECTION			

**COMAX** ELECTRONICS (HUIZHOU) CO.,LTD.

## Looking for pricing, stock, or lifecycle information?

Click below to explore more details on WIN SOURCE:

-  [View SK-23H11-G 9 S on WIN SOURCE](#)
-  [C&K Components Information](#)

## Optimize Your Supply Chain with WIN SOURCE Solutions

-  Global Sourcing Solution
-  Obsolete Management
-  Cost Control Management
-  Shortage Management
-  Alternative Solution
-  Excess Inventory Management