



THE DATASHEET OF
S558-5500-68



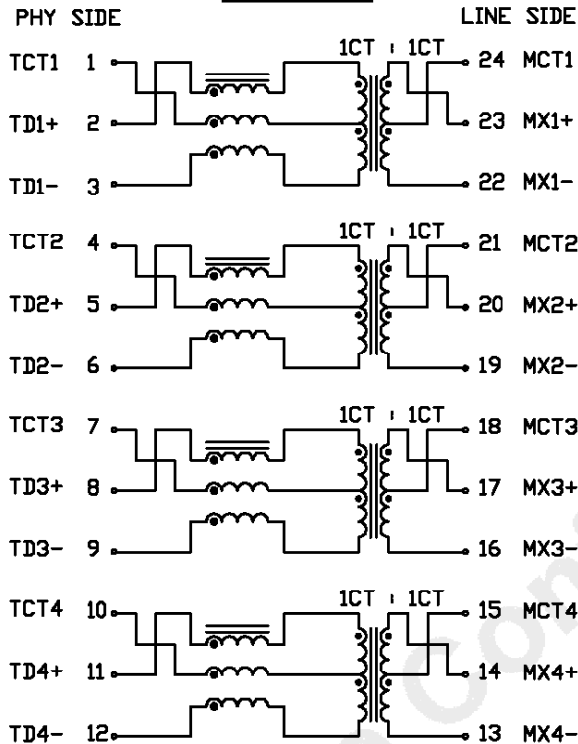
THE INFORMATION CONTAINED HEREIN IS CONSIDERED "PROPRIETARY" TO BEL FUSE INC. AND SHALL NOT BE COPIED, REPRODUCED OR DISCLOSED WITHOUT THE WRITTEN APPROVAL OF BEL FUSE INC.

ELECTRICAL CHARACTERISTICS @25°C

RoHS



SCHEMATIC



TURNS RATIO

<2-1-3> : <23-24-22>	1CT : 1CT ±2%
<5-4-6> : <20-21-19>	1CT : 1CT ±2%
<8-7-9> : <17-18-16>	1CT : 1CT ±2%
<11-10-12> : <14-15-13>	1CT : 1CT ±2%

POLARITY

PER DOT CONVENTION

□CL

-40°C TO +85°C	100kHz, 100mV
-40°C TO +85°C	350uH MIN WITH 11mA DC BIAS
	120uH MIN WITH 19mA DC BIAS

INTERWINDING CAPACITANCE, C_{ww}

@1MHz, 20mV
30pF MAX

INSERTION LOSS

0.3MHz - 1MHz	1.1dB MAX
1MHz - 65MHz	0.8dB MAX
65MHz - 100MHz	1.0dB MAX
100MHz - 125MHz	1.2dB MAX

RETURN LOSS @100ΩHM

0.5MHz - 40MHz	18dB MIN
40MHz - 100MHz	12-20LOG(f/80MHz)dB MIN

CROSSTALK

0.3MHz - 100MHz
33-20LOG(f/100MHz)dB MIN

CM TO CM REJ

0.3MHz - 100MHz
30dB MIN

CM TO DM REJ

0.3MHz - 100MHz
35dB MIN

BALANCED DC LINE CURRENT

720mA MAX @57VDC CONTINUOUS
1.2A MAX @57VDC FOR 200ms

HIPDT

LEAKAGE CURRENT LESS THAN 1mA AT 1500VAC

DC RESISTANCE

<2-3>, <5-6>, <8-9>, <11-12>	1.00 ΩHM MAX
<1-3>, <4-6>, <7-9>, <10-12>	0.75 ΩHM MAX
<23-22>, <20-19>, <17-16>, <14-13>	0.50 ΩHM MAX
<24-22>, <21-19>, <18-16>, <15-13>	0.30 ΩHM MAX

REV. : D PAGE : 2

ORIGINATED BY	DATE
Alice Pang	2020-06-29
DRAWN BY	DATE
ZC Guo	2020-06-29

TITLE
ELECTRICAL SPECIFICATION

PART NO. / DRAWING NO.
S558-5500-68
FILE NAME
S558550068D.DWG

STANDARD DIM.	[] METRIC DIM. AS REF.
TOL. IN INCH	UNIT : INCH [mm]
.X	SCALE : N/A
.XX	SIZE : A4
.XXX	

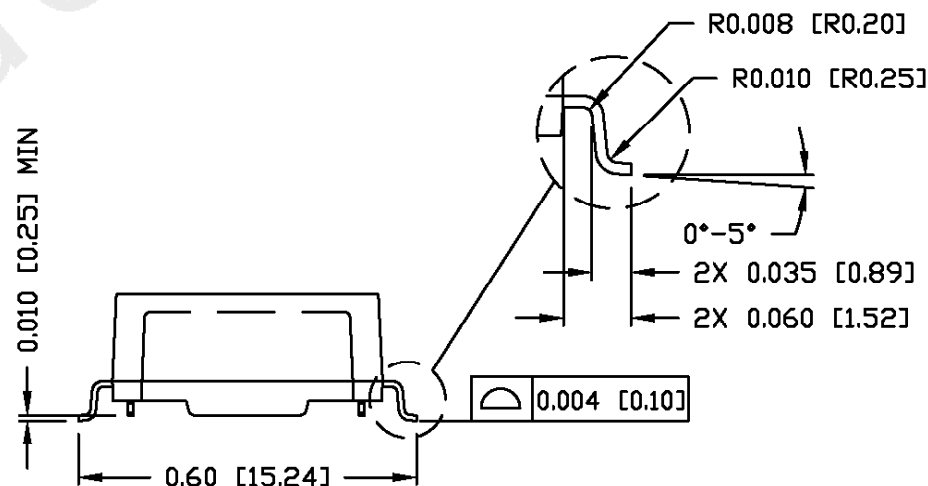
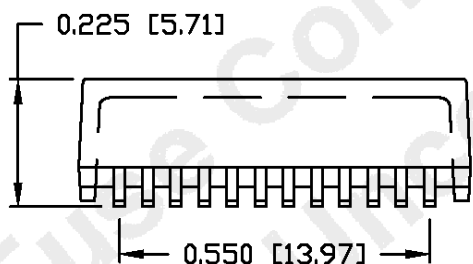
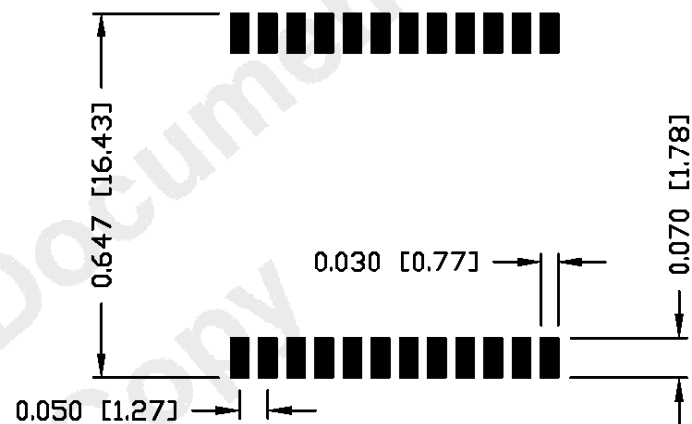
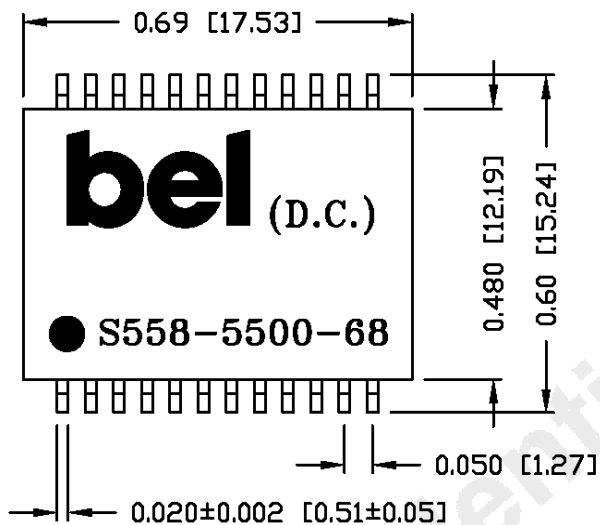


THE INFORMATION CONTAINED HEREIN IS CONSIDERED "PROPRIETARY" TO BEL FUSE INC. AND SHALL NOT BE COPIED, REPRODUCED OR DISCLOSED WITHOUT THE WRITTEN APPROVAL OF BEL FUSE INC.

RoHS



SUGGESTED PCB PAD LAYOUT



NOTES:

1. STANDARD MARKING REFER TO DDC. HAND-WORK-04.
2. PACKAGE CODE: 'RQS001'.

REV. : C PAGE : 3

ORIGINATED BY	DATE
Lawrence Tsang	2015-01-28
DRAWN BY	DATE
ZC Guo	2015-01-28

TITLE
MECHANICAL OUTLINE

PART NO. / DRAWING NO.
S558-5500-68
FILE NAME
S558550068C.DWG

STANDARD DIM.	[] METRIC DIM. AS REF.
TOL. IN INCH	UNIT : INCH [mm]
.X	
.XX	±0.01
.XXX	±0.005

SCALE : N/A
SIZE : A4



Looking for pricing, stock, or lifecycle information?

Click below to explore more details on WIN SOURCE:

 [View S558-5500-68 on WIN SOURCE](#)

 [Bel Fuse Inc. Information](#)

Optimize Your Supply Chain with WIN SOURCE Solutions

-  Global Sourcing Solution
-  Obsolete Management
-  Cost Control Management
-  Shortage Management
-  Alternative Solution
-  Excess Inventory Management