



**THE DATASHEET OF  
S558-5500-JV**



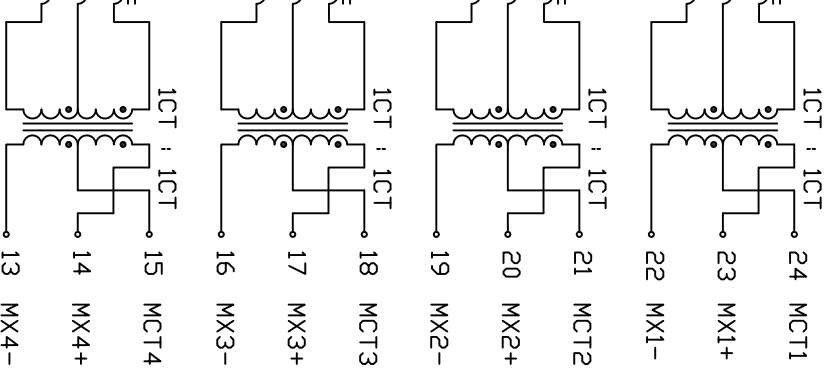
PRELIMINARY

## ELECTRICAL CHARACTERISTICS @25°C



## SCHEMATIC

## LINE SIDE



TURNS RATIO  
 (2-1-3) : (23-24-22)  
 (5-4-6) : (20-21-19)  
 (8-7-9) : (17-18-16)  
 (11-10-12) : (14-15-13)

POLARITY

DCL

RETURN LOSS

1MHz-100MHz

100MHz-300MHz

HIPOT (Isolation Voltage):

100% DF PRODUCTION TESTED TO COMPLY WITH  
 IEEE 802.3 ISOLATION REQUIREMENTS.

NOTE: PORT-TO PORT ISOLATION NOT INCLUDED.  
 BALANCED DC LINE CURRENT

1CT : 1CT ±2%  
 1CT : 1CT ±2%  
 1CT : 1CT ±2%  
 1CT : 1CT ±2%  
 PER DDT CONVENTION  
 100kHz, 100mV  
 180µH MIN WITH 8mA DC BIAS  
 120µH MIN WITH 19mA DC BIAS

-20 dB Min  
 -20+16LDG(f/100MHz) dB MIN

2250 VDC

720 mA MAX. @ 57 VDC CONTINUOUS  
 1.2mA MAX. @ 57 VDC FOR 200 MILLISECONDS

OPERATING TEMPERATURE: -40 TO 85°C

MEETS 5G PERFORMANCE REQUIREMENTS AS PER IEEE 802.3bz

## ELECTRICAL SPECIFICATION

PART NO. / DRAWING NO.

S558-5500-JV

STANDARD DIM. [ ] METRIC DIM. AS REF.

TOL. IN INCH

.X

.XX

FILE NAME

S5585500JVPA.DWG

UNIT : INCH [mm]

SCALE : N/A



SIZE : A4

REV. : X

PAGE : 2

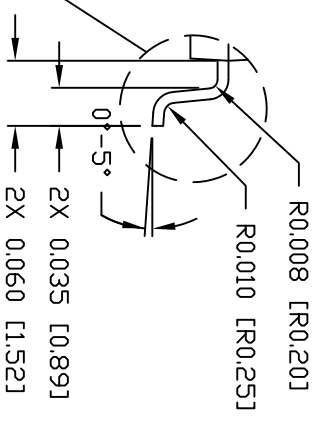
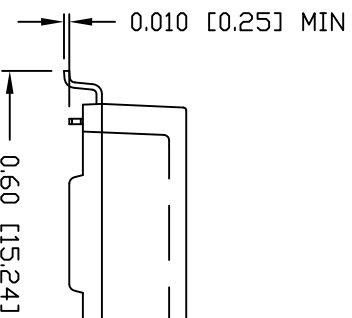
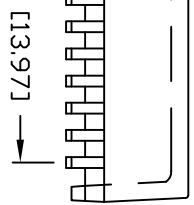
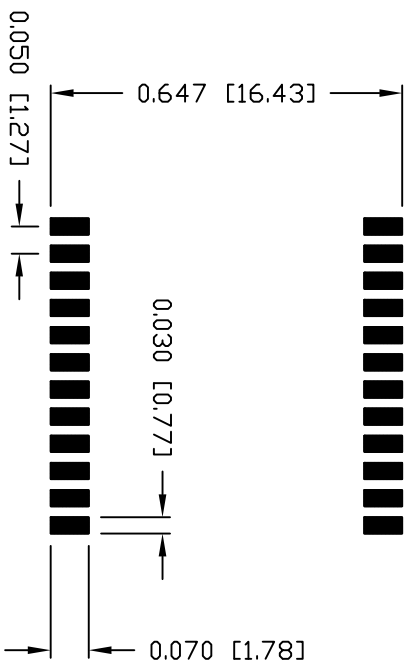
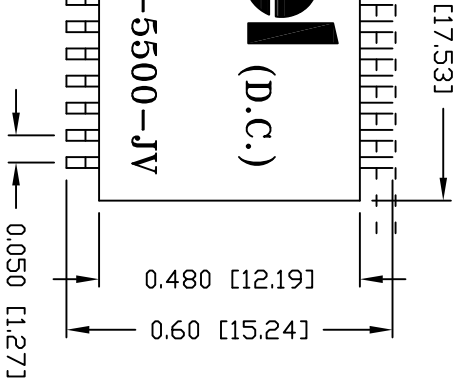


POWER | PROTECT | CONNECT

This document is electronically generated. This is a controlled copy if used internally

PRELIMINARY

SUGGESTED PCB PAD LAYOUT



TD DOC. HAND-WORK-04.

MECHANICAL OUTLINE

PART NO. / DRAWING NO.		STANDARD DIM. [ ] METRIC DIM. AS REF.	
S558-5500-JV		TOL. IN INCH	
FILE NAME		SCALE : N/A	
S5585500JVPA.DWG		SIZE : A4	
.X		.XX	
.XXX		.XXX	



REV. : PA PAGE : 3

This document is electronically generated. This is a controlled copy if used internally



## Looking for pricing, stock, or lifecycle information?

Click below to explore more details on WIN SOURCE:

-  [View S558-5500-JV on WIN SOURCE](#)
-  [Bel Fuse Inc. Information](#)

## Optimize Your Supply Chain with WIN SOURCE Solutions

-  Global Sourcing Solution
-  Obsolete Management
-  Cost Control Management
-  Shortage Management
-  Alternative Solution
-  Excess Inventory Management