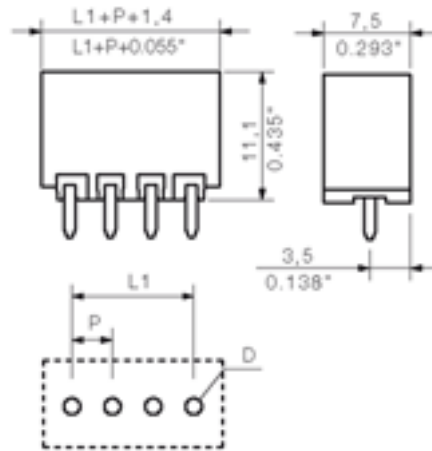
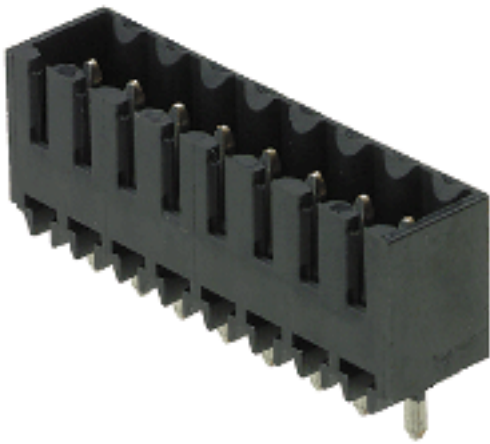




THE DATASHEET OF
1753082001





General ordering data

Order No.	1753082001
Part designation	SL-SMT3.5/12/180G 1.5SN
Version	PCB plug-in connector, Male connectors, Reflow solder connection, Pitch: 3.50 mm, No. of poles: 12, 180°, Box
EAN	4032248130986
Qty.	50 pc(s).

System parameters

Fitted to PCB	Reflow solder connection
Outgoing elbow	180°
Pitch	3.5 mm
Pitch in inch	0.138 inch
No. of poles	12
Solder pin length	1.5 mm
Can be coded	Yes
No. of rows	1
No. of solder pins per pole	1
Dia. of fitting hole	1.4 mm
Fitting hole tolerance	+ 0.1 mm
L1 in mm	38.5 mm
L1 in inch	1.516 inch
Insulation resistance	1 MΩ

System parameters

Electric shock protection to DIN VDE 0470	IP 10
Electric shock protection to DIN VDE 0470	Safe from back-of-hand touch

Material data

Insulating material	LCP GF
Colour	black
colour chart	Similar to RAL 9011
Insulating material group	IIIa
Flammability class UL 94	V-0
CTI	>= 175
Temperature of glow-wire test	960 °C
Duration of glow-wire test	30 S
Contact base material	CuSn
Contact surface	tinned
Constant operating temp., min.	-25 °C
Constant operating temp., max.	100 °C
Storage temperature, min.	-25 °C
Storage temperature, max.	55 °C
Max. relative humidity during storage	80 %

DIN IEC rating data

Rated current, min. No. pins (Tu=20°C)	15 A
Rated current, max. No. pins (Tu=20°C)	12 A
Rated current, min. No. pins (Tu=40°C)	13 A
Rated current, max. No. pins (Tu=40°C)	10 A
Rated voltage for overvoltage class/pollution severity III/3	160 V
Rated impulse withstand voltage for overvoltage class/pollution severity III/3	2.5 kV
Rated voltage for overvoltage class/pollution severity III/2	160 V
Rated impulse withstand voltage for overvoltage class/pollution severity III/2	2.5 kV
Rated voltage for overvoltage class/pollution severity II/2	320 V
Rated impulse withstand voltage for overvoltage class/pollution severity II/2	2.5 kV
Short-time withstand current resistance	3 x 1s with 100 A

CSA rating data

Rated voltage (Use group D)	300 V
Rated current (Use group D)	10 A

UL 1059 rating data

Rated voltage (Use group D)	300 V
Rated current (Use group D)	10 A

Approvals

Approvals institutes



Downloads

CAD Library (P-CAD Format - Standard) SL-SMT.LIB

Classifications

ETIM 2.0	NK
ETIM 3.0	EC001284
eClass 4.1	27-26-07-01
eClass 5.0	27-26-07-01
eClass 5.1	27-26-07-04

Similar products

Order No.	Part designation	Version
1752982001	SL-SMT3.5/2/180G 1.5SN	PCB plug-in connector, Male connectors, Reflow solder connection, Pitch: 3.50 mm, No. of poles: 2, 180°, Box
1842320000	SL-SMT3.5/2/180G 3.2SN SW BOX	PCB plug-in connector, Male connectors, Reflow solder connection, Pitch: 3.50 mm, No. of poles: 2, 180°, Box
1752992001	SL-SMT3.5/3/180G 1.5SN	PCB plug-in connector, Male connectors, Reflow solder connection, Pitch: 3.50 mm, No. of poles: 3, 180°, Box
1842330000	SL-SMT3.5/3/180G 3.2SN SW BOX	PCB plug-in connector, Male connectors, Reflow solder connection, Pitch: 3.50 mm, No. of poles: 3, 180°, Box
1753002001	SL-SMT3.5/4/180G 1.5SN	PCB plug-in connector, Male connectors, Reflow solder connection, Pitch: 3.50 mm, No. of poles: 4, 180°, Box
1842340000	SL-SMT3.5/4/180G 3.2SN SW BOX	PCB plug-in connector, Male connectors, Reflow solder connection, Pitch: 3.50 mm, No. of poles: 4, 180°, Box
1753012001	SL-SMT3.5/5/180G 1.5SN	PCB plug-in connector, Male connectors, Reflow solder connection, Pitch: 3.50 mm, No. of poles: 5, 180°, Box
1842350000	SL-SMT3.5/5/180G 3.2SN SW BOX	PCB plug-in connector, Male connectors, Reflow solder connection, Pitch: 3.50 mm, No. of poles: 5, 180°, Box
1753022001	SL-SMT3.5/6/180G 1.5SN	PCB plug-in connector, Male connectors, Reflow solder connection, Pitch: 3.50 mm, No. of poles: 6, 180°, Box
1842360000	SL-SMT3.5/6/180G 3.2SN SW BOX	PCB plug-in connector, Male connectors, Reflow solder connection, Pitch: 3.50 mm, No. of poles: 6, 180°, Box

1753032001	SL-SMT3.5/7/180G 1.5SN	PCB plug-in connector, Male connectors, Reflow solder connection, Pitch: 3.50 mm, No. of poles: 7, 180°, Box
1842370000	SL-SMT3.5/7/180G 3.2SN SW BOX	PCB plug-in connector, Male connectors, Reflow solder connection, Pitch: 3.50 mm, No. of poles: 7, 180°, Box
1753042001	SL-SMT3.5/8/180G 1.5SN	PCB plug-in connector, Male connectors, Reflow solder connection, Pitch: 3.50 mm, No. of poles: 8, 180°, Box
1842380000	SL-SMT3.5/8/180G 3.2SN SW BOX	PCB plug-in connector, Male connectors, Reflow solder connection, Pitch: 3.50 mm, No. of poles: 8, 180°, Box
1753052001	SL-SMT3.5/9/180G 1.5SN	PCB plug-in connector, Male connectors, Reflow solder connection, Pitch: 3.50 mm, No. of poles: 9, 180°, Box
1842390000	SL-SMT3.5/9/180G 3.2SN SW BOX	PCB plug-in connector, Male connectors, Reflow solder connection, Pitch: 3.50 mm, No. of poles: 9, 180°, Box
1753062001	SL-SMT3.5/10/180G 1.5SN	PCB plug-in connector, Male connectors, Reflow solder connection, Pitch: 3.50 mm, No. of poles: 10, 180°, Box
1836990000	SL-SMT3.5/10/180G 3.2SN	PCB plug-in connector, Male connectors, Reflow solder connection, Pitch: 3.50 mm, No. of poles: 10, 180°, Box
1753072001	SL-SMT3.5/11/180G 1.5SN	PCB plug-in connector, Male connectors, Reflow solder connection, Pitch: 3.50 mm, No. of poles: 11, 180°, Box
1842400000	SL-SMT3.5/11/180G 3.2SN SW BOX	PCB plug-in connector, Male connectors, Reflow solder connection, Pitch: 3.50 mm, No. of poles: 11, 180°, Box
1842410000	SL-SMT3.5/12/180G 3.2SN SW BOX	PCB plug-in connector, Male connectors, Reflow solder connection, Pitch: 3.50 mm, No. of poles: 12, 180°, Box
1753092001	SL-SMT3.5/13/180G 1.5SN	PCB plug-in connector, Male connectors, Reflow solder connection, Pitch: 3.50 mm, No. of poles: 13, 180°, Box
1842420000	SL-SMT3.5/13/180G 3.2SN SW BOX	PCB plug-in connector, Male connectors, Reflow solder connection, Pitch: 3.50 mm, No. of poles: 13, 180°, Box
1753102001	SL-SMT3.5/14/180G 1.5SN	PCB plug-in connector, Male connectors, Reflow solder connection, Pitch: 3.50 mm, No. of poles: 14, 180°, Box
1842430000	SL-SMT3.5/14/180G 3.2SN SW BOX	PCB plug-in connector, Male connectors, Reflow solder connection, Pitch: 3.50 mm, No. of poles: 14, 180°, Box
1753112001	SL-SMT3.5/15/180G 1.5SN	PCB plug-in connector, Male connectors, Reflow solder connection, Pitch: 3.50 mm, No. of poles: 15, 180°, Box
1842440000	SL-SMT3.5/15/180G 3.2SN SW BOX	PCB plug-in connector, Male connectors, Reflow solder connection, Pitch: 3.50 mm, No. of poles: 15, 180°, Box
1753122001	SL-SMT3.5/16/180G 1.5SN	PCB plug-in connector, Male connectors, Reflow solder connection, Pitch: 3.50 mm, No. of poles: 16, 180°, Box
1842450000	SL-SMT3.5/16/180G 3.2SN SW BOX	PCB plug-in connector, Male connectors, Reflow solder connection, Pitch: 3.50 mm, No. of poles: 16, 180°, Box
1753132001	SL-SMT3.5/17/180G 1.5SN	PCB plug-in connector, Male connectors, Reflow solder connection, Pitch: 3.50 mm, No. of poles: 17, 180°, Box
1842460000	SL-SMT3.5/17/180G 3.2SN SW BOX	PCB plug-in connector, Male connectors, Reflow solder connection, Pitch: 3.50 mm, No. of poles: 17, 180°, Box
1753142001	SL-SMT3.5/18/180G 1.5SN	PCB plug-in connector, Male connectors, Reflow solder connection, Pitch: 3.50 mm, No. of poles: 18, 180°, Box
1842470000	SL-SMT3.5/18/180G 3.2SN SW BOX	PCB plug-in connector, Male connectors, Reflow solder connection, Pitch: 3.50 mm, No. of poles: 18, 180°, Box
1753152001	SL-SMT3.5/19/180G 1.5SN	PCB plug-in connector, Male connectors, Reflow solder connection, Pitch: 3.50 mm, No. of poles: 19, 180°, Box
1842480000	SL-SMT3.5/19/180G 3.2SN SW BOX	PCB plug-in connector, Male connectors, Reflow solder connection, Pitch: 3.50 mm, No. of poles: 19, 180°, Box
1753162001	SL-SMT3.5/20/180G 1.5SN	PCB plug-in connector, Male connectors, Reflow solder connection, Pitch: 3.50 mm, No. of poles: 20, 180°, Box

1842490000	SL-SMT3.5/20/180G 3.2SN SW BOX	PCB plug-in connector, Male connectors, Reflow solder connection, Pitch: 3.50 mm, No. of poles: 20, 180°, Box
1753172001	SL-SMT3.5/21/180G 1.5SN	PCB plug-in connector, Male connectors, Reflow solder connection, Pitch: 3.50 mm, No. of poles: 21, 180°, Box
1842500000	SL-SMT3.5/21/180G 3.2SN SW BOX	PCB plug-in connector, Male connectors, Reflow solder connection, Pitch: 3.50 mm, No. of poles: 21, 180°, Box
1753182001	SL-SMT3.5/22/180G 1.5SN	PCB plug-in connector, Male connectors, Reflow solder connection, Pitch: 3.50 mm, No. of poles: 22, 180°, Box
1842510000	SL-SMT3.5/22/180G 3.2SN SW BOX	PCB plug-in connector, Male connectors, Reflow solder connection, Pitch: 3.50 mm, No. of poles: 22, 180°, Box
1753192001	SL-SMT3.5/23/180G 1.5SN	PCB plug-in connector, Male connectors, Reflow solder connection, Pitch: 3.50 mm, No. of poles: 23, 180°, Box
1842520000	SL-SMT3.5/23/180G 3.2SN SW BOX	PCB plug-in connector, Male connectors, Reflow solder connection, Pitch: 3.50 mm, No. of poles: 23, 180°, Box
1753202001	SL-SMT3.5/24/180G 1.5SN	PCB plug-in connector, Male connectors, Reflow solder connection, Pitch: 3.50 mm, No. of poles: 24, 180°, Box
1842530000	SL-SMT3.5/24/180G 3.2SN SW BOX	PCB plug-in connector, Male connectors, Reflow solder connection, Pitch: 3.50 mm, No. of poles: 24, 180°, Box

Looking for pricing, stock, or lifecycle information?

Click below to explore more details on WIN SOURCE:

 [View 1753082001 on WIN SOURCE](#)

 [Weidmuller Information](#)

Optimize Your Supply Chain with WIN SOURCE Solutions

-  Global Sourcing Solution
-  Obsolete Management
-  Cost Control Management
-  Shortage Management
-  Alternative Solution
-  Excess Inventory Management