



**THE DATASHEET OF
M80-4000000FE-11-307-00-000**



Customer Information Sheet

DRAWING No.: M80-400000FE-XX-XXX-00-000

SHEET 5 OF 6

IF IN DOUBT - ASK

(C)

NOT TO SCALE

POWER CRIMP AND SOLDER CONTACTS ONLY

SPECIFICATIONS:

MATERIAL: MOULDING: GLASS FILLED PPS, UL94V-0, BLACK

POWER CONTACT:

BODY = COPPER ALLOY
LATCHING COLLAR = BERYLLIUM COPPER
GUIDE PIN, SCREW = STAINLESS STEEL

FINISH:

POWER CONTACT:
BODY, SLEEVE, INNER CONTACT, END PLUG = GOLD
LATCHING COLLAR = NICKEL

ELECTRICAL:

WORKING VOLTAGE = 800V AC/DC
VOLTAGE PROOF = 1200V AC/DC
INSULATION RESISTANCE = 100MΩ MIN

POWER CONTACT:

CONTACT RESISTANCE = 6mΩ MAX
CURRENT RATING = M80-325 = 20A MAX WITH 12AWG
M80-326 = 15A MAX WITH 14AWG
M80-327 = 10A MAX WITH 16AWG
M80-328 = 8A MAX WITH 18AWG
M80-329 = 5A MAX WITH 20AWG
M80-32A = 20A MAX WITH 12AWG
M80-32B = 15A MAX WITH 14AWG
M80-32C = 10A MAX WITH 16AWG
M80-PF5 = 40A MAX WITH 10AWG
CONTACT AS SPECIFIED

MECHANICAL:

DURABILITY = 500 OPERATIONS

POWER CONTACT:

INSERTION FORCE:

M80-325/326/327/328/329/
32A/32B/32C = 8N MAX

M80-PF5 = 15N MAX

WITHDRAWAL FORCE = 0.5N MIN

ENVIRONMENTAL:

TEMPERATURE RANGE:

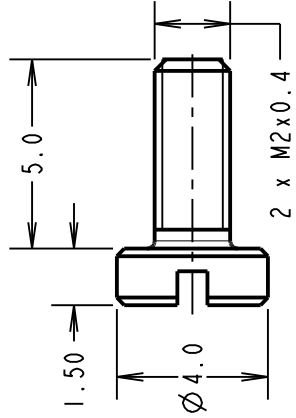
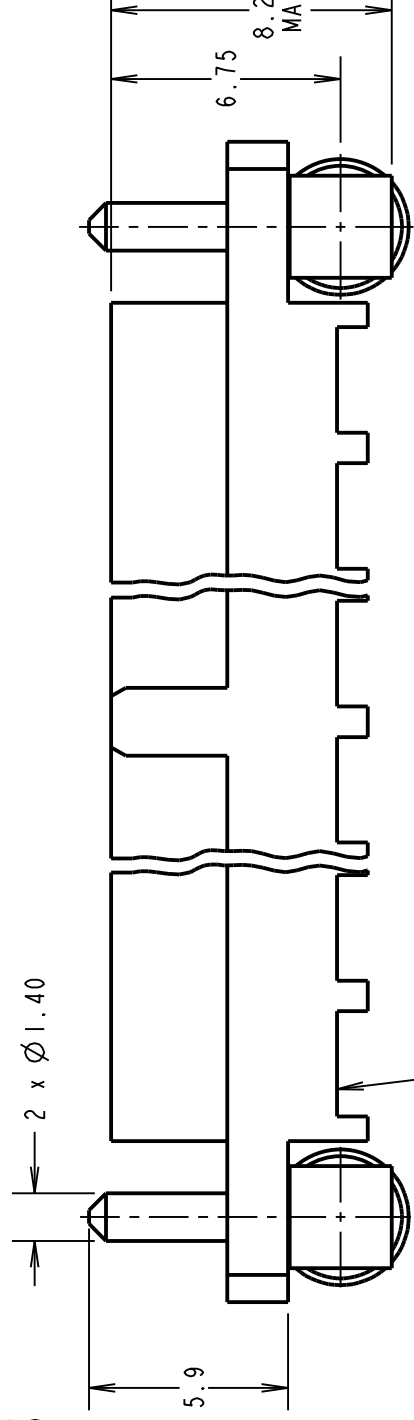
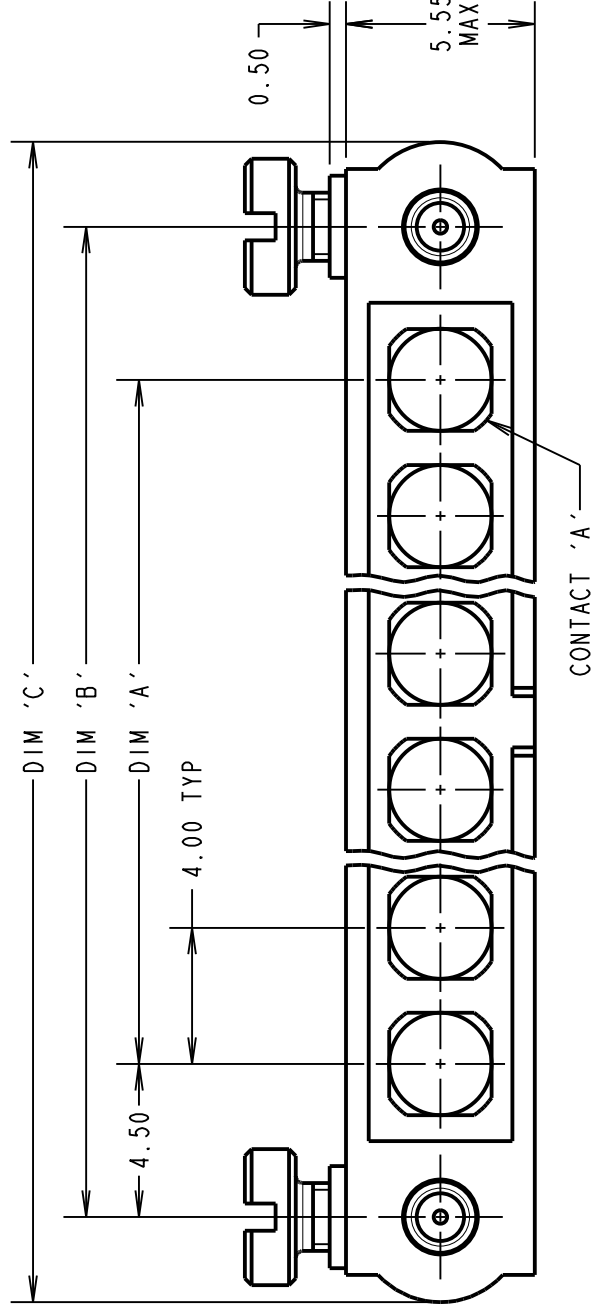
M80-325/326/327/328/329/
32A/32B/32C = -55°C TO +125°C

M80-PF5 = -55°C TO +150°C

PACKING:

BAG

FOR COMPLETE SPECIFICATION SEE COMPONENT SPECIFICATION C005XX (LATEST ISSUE)



POWER CABLE STRIPPING DIMENSIONS

DIMENSION	CALCULATION
DIM 'A'	4 x No. OF CONTACTS - 4.00
DIM 'B'	4 x No. OF CONTACTS + 5.00
DIM 'C'	4 x No. OF CONTACTS + 10.00

EXAMPLE: CONNECTOR WITH 08 POWER CONTACTS,
M80-400000FE-08-305-00-000
DIM 'A' = 28.00mm, DIM 'B' = 37.00mm,
DIM 'C' = 42.00mm

ORDER CODE: (POWER CRIMP/SOLDER)
M80-400000FE-XX-XXX-00-000

TOTAL No. OF CONTACTS:
02 TO 12

SPECIAL CONTACTS:

325 = POWER CONTACT SOLDER 12AWG M80-325
326 = POWER CONTACT SOLDER 14AWG M80-326
327 = POWER CONTACT SOLDER 16AWG M80-327
328 = POWER CONTACT SOLDER OR CRIMP 18AWG M80-328
329 = POWER CONTACT SOLDER OR CRIMP 20AWG M80-329
32A = 90° POWER CONTACT SOLDER 12AWG M80-32A
32B = 90° POWER CONTACT SOLDER 14AWG M80-32B
32C = 90° POWER CONTACT SOLDER 16AWG M80-32C
PF5 = POWER CONTACT SOLDER 10AWG M80-PF5

NOTES:

- CONNECTORS A
- FOR EXTRA PO
- M80-325/326/
- POWER CONTACT
- INSTRUCTION
- RECOMMENDED
- M80-328/329
- POWER CONTACT

HARWIN

www.harwin.com
technical@harwin.com

THIS DRAWING AND ANY INFORMATION OR DESCRIPTIVE MATTER SET OUT HEREON ARE CONFIDENTIAL AND COPYRIGHT PROPERTY OF THE HARWIN GROUP AND MUST NOT BE DISCLOSED, LOANED, COPIED OR USED FOR MANUFACTURING, TENDERING OR FOR ANY OTHER PURPOSE WITHOUT THEIR WRITTEN PERMISSION.

TOLERANCES

X. = ± 1mm
X.X = ± 0.50mm
X.XX = ± 0.10mm
X.XXX = ± 0.01mm

ANGLES = ± 5°

UNLESS STATED

MATER

FINI

S/ARI

Customer Information Sheet

DRAWING No.: M80-400000FE-XX-XXX-00-000

SHEET 6 OF 6

IF IN DOUBT - ASK

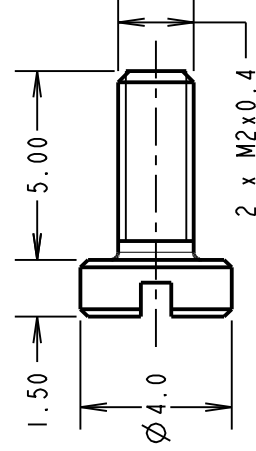
(C)

NOT TO SCALE

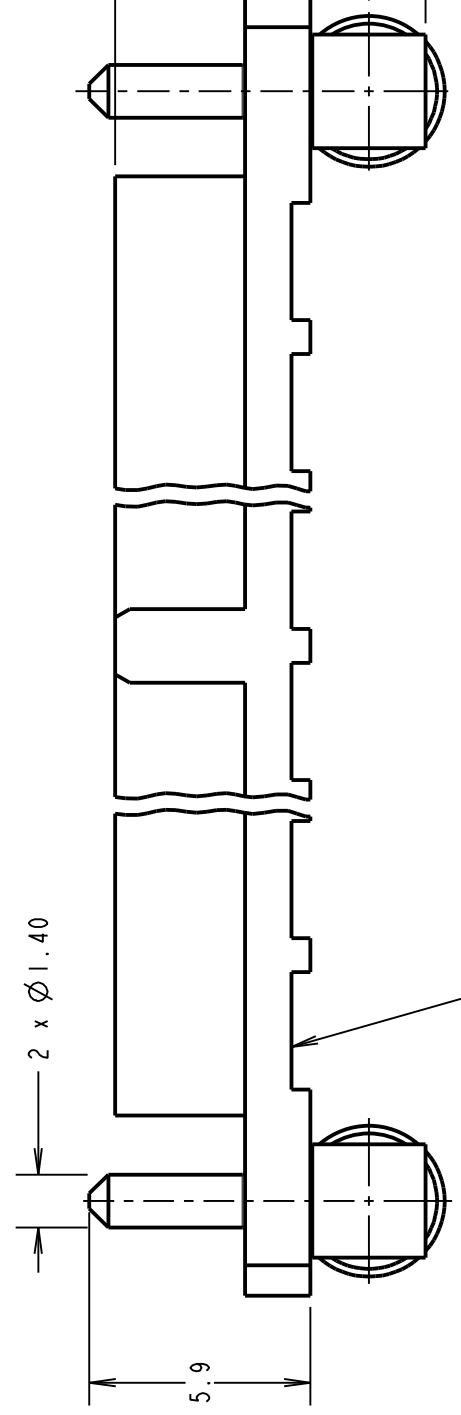
PC TAIL HORIZONTAL CONTACTS ONLY



SPECIFICATIONS:
MATERIAL:
 MOLDING: GLASS FILLED PPS, UL94V-0, BLACK
 POWER CONTACT: COPPER ALLOY
 COAX CONTACT:
 BODY = COPPER ALLOY
 INNER CONTACT = COPPER ALLOY
 INSULATOR = PTFE
FINISH:
 GUIDE PIN, SCREW = STAINLESS STEEL
 POWER CONTACT: GOLD
 COAX CONTACT: BODY, INNER CONTACT = GOLD
ELECTRICAL:
 WORKING VOLTAGE = 800V AC/DC
 VOLTAGE PROOF = 1200V AC/DC
 INSULATION RESISTANCE = 100MΩ MIN
 POWER CONTACT:
 CONTACT RESISTANCE = 6mΩ MAX
 CURRENT RATING:
 M80-323/324 = 20A MAX
 M80-PF3/PF4 = 40A MAX
MECHANICAL:
 DURABILITY = 500 OPERATIONS
 POWER CONTACT:
 INSERTION FORCE:
 M80-323/324 = 8N MAX
 M80-PF3/PF4 = 15N MAX
 WITHDRAWAL FORCE = 0.5N MIN
ENVIRONMENTAL:
 TEMPERATURE RANGE:
 M80-323/324 = -55°C TO +125°C
 M80-PF3/PF4 = -55°C TO +150°C
PACKING:
 TUBE
 FOR COMPLETE SPECIFICATION SEE COMPONENT SPECIFICATION C005XX (LATEST ISSUE)



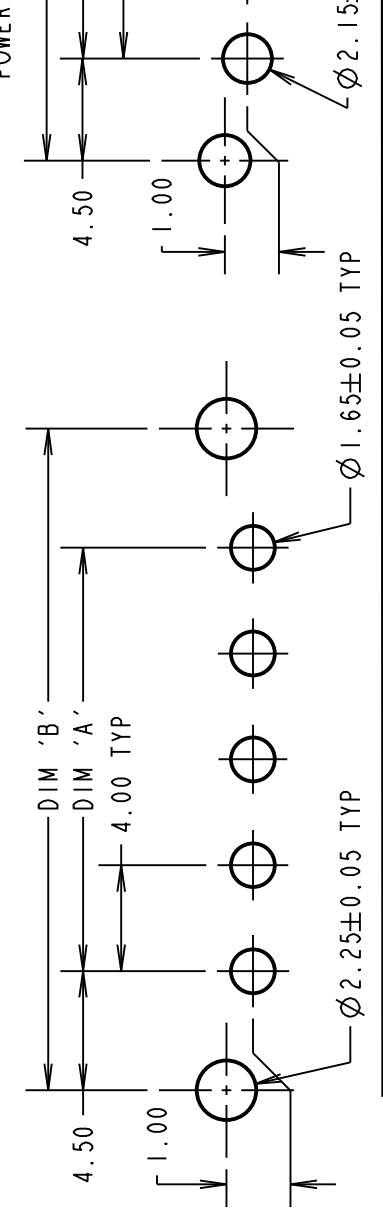
5.9
 2 x Ø 1.40



SPECIAL CONTACTS HIDDEN FOR ILLUSTRATION ONLY
 SEE ORDER CODE FOR PART No. TO BE ASSEMBLED

ORDER CODE:
 (FEMALE HORIZONTAL POWER CONTACTS ONLY)
M80-400000FE-XX-XXX-00-000
 TOTAL No. OF CONTACTS:
 02 TO 12
 FEMALE HORIZONTAL POWER CONTACTS:
 323 = 20A POWER CONTACT PC TAIL 3.5mm M80-323
 324 = 20A POWER CONTACT PC TAIL 5.0mm M80-324
 PF3 = 40A POWER CONTACT PC TAIL 3.5mm M80-PF3
 PF4 = 40A POWER CONTACT PC TAIL 5.0mm M80-PF4

RECOMMENDED PCB LAYOUT FOR
 POWER CONTACTS: M80-323/324



DIMENSION	CALCULATION
DIM 'A'	4 x No. OF CONTACTS - 4.00
DIM 'B'	4 x No. OF CONTACTS + 5.00
DIM 'C'	4 x No. OF CONTACTS + 10.00
DIM 'D'	M80-323 = 3.50mm, M80-324 = 5.00mm
DIM 'E'	M80-PF3 = 3.50mm, M80-PF4 = 5.00mm
EXAMPLE 1: CONNECTOR WITH 10 POWER CONTACTS 3.5mm, M80-400000FE-10-323-00-000	
DIM 'A' = 36.00mm, DIM 'B' = 45.00mm, DIM 'C' = 50.00mm DIM 'D' = 3.50mm	

HARWIN
 www.harwin.com
 technical@harwin.com

THIS DRAWING AND ANY INFORMATION OR DESCRIPTIVE MATTER SET OUT HEREON ARE CONFIDENTIAL AND COPYRIGHT PROPERTY OF THE HARWIN GROUP AND MUST NOT BE DISCLOSED, LOANED, COPIED OR USED FOR MANUFACTURING, TENDERING OR FOR ANY OTHER PURPOSE WITHOUT THEIR WRITTEN PERMISSION.

TOLERANCES
 X. = ± 1mm
 X.X = ± 0.50mm
 X.XX = ± 0.10mm
 X.XXX = ± 0.01mm
 ANGLES = ± 5°
 UNLESS STATED

RECOM POWER

MATER

FINI

S/ARI

Looking for pricing, stock, or lifecycle information?

Click below to explore more details on WIN SOURCE:

[View M80-400000FE-11-307-00-000 on WIN SOURCE](#)

[Harwin Inc. Information](#)

Optimize Your Supply Chain with WIN SOURCE Solutions

- ✓ Global Sourcing Solution
- ✓ Obsolete Management
- ✓ Cost Control Management
- ✓ Shortage Management
- ✓ Alternative Solution
- ✓ Excess Inventory Management