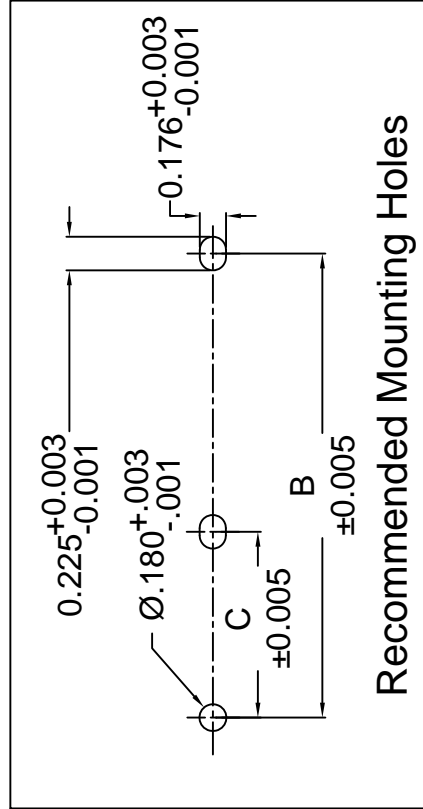
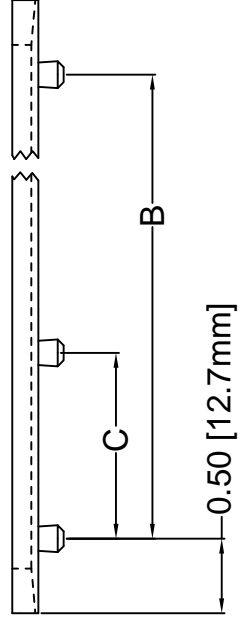
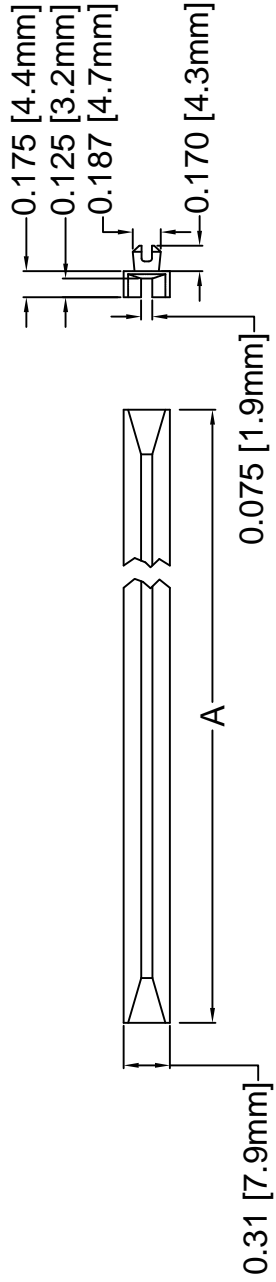




**THE DATASHEET OF  
SDC-1050**



REV.	
J	Engineering Release
K	Removed Material C



**Recommended Mounting Holes**

PART NO.	A
SDC-200	±.032 (.8)
SDC-250	2.0 (50.8)
SDC-300	2.5 (63.5)
SDC-350	3.0 (76.2)
SDC-400	3.5 (88.9)
SDC-450	4.0 (101.6)
SDC-500	4.5 (114.3)
SDC-550	5.0 (127.0)
SDC-600	5.5 (139.7)
SDC-650	6.0 (152.4)
SDC-700	6.5 (165.1)
SDC-750	7.0 (177.8)
SDC-800	7.5 (190.5)
SDC-850	8.0 (203.2)
SDC-900	8.5 (215.9)
SDC-950	9.0 (228.6)
SDC-1000	9.5 (241.3)
SDC-1050	10.0 (254.0)
SDC-1100	10.5 (266.7)
	11.0 (279.4)

STANDARD TOLERANCES  
(UNLESS OTHERWISE SPECIFIED)

DECIMALS	ANGULAR
.X ±.1	X°
.XX ±.01	
.XXX ±.005	

DESIGNED: **D. Green** DATE: **11/2**

CHECKED: **M. Chen** DATE: **11/2**

3. ALL DIMENSIONS IN INCHES, UNLESS OTHERWISE SPECIFIED.
2. MATERIAL: NYLON 66, 94V-2, NATURAL.
1. GENERAL SPECIFICATIONS: BIVAR MOLDED COMPONENT SPECIFICATION BV00-E101.

## Looking for pricing, stock, or lifecycle information?

Click below to explore more details on WIN SOURCE:

 [View SDC-1050 on WIN SOURCE](#)

 [Bivar Inc. Information](#)

## Optimize Your Supply Chain with WIN SOURCE Solutions

-  Global Sourcing Solution
-  Obsolete Management
-  Cost Control Management
-  Shortage Management
-  Alternative Solution
-  Excess Inventory Management