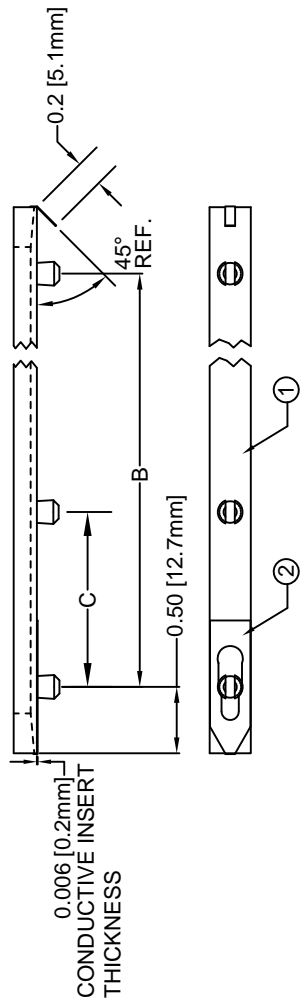
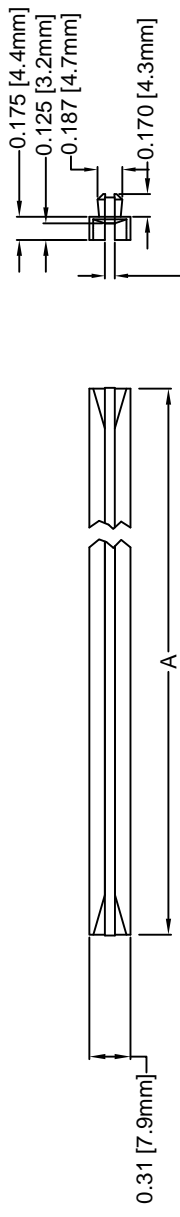
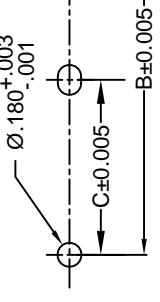


ITEM	QTY	PART NUMBER	PART DESCRIPTION
1	1	SDC-XXX	Interchangeable Snap-In Card Guide
2	1	CS-600-F XX.XX	Conductive Insert, Stainless Steel

REV.	DESCRIPTION
D	Engineering Release
E	Engineering Update



PART NO.	A ±0.032 (.8)	B ±0.016 (.4)	C ±0.008 (.2)	Conductive Insert
SDC-200-CI	2.0 (50.8)	1.0 (25.4)	-	CS-600-F 10.75
SDC-250-CI	2.5 (63.5)	1.5 (38.1)	-	CS-600-F 10.75
SDC-300-CI	3.0 (76.2)	2.0 (50.8)	-	CS-600-F 10.75
SDC-350-CI	3.5 (88.9)	2.5 (63.5)	-	CS-600-F 10.75
SDC-400-CI	4.0 (101.6)	3.0 (76.2)	-	CS-600-F 10.75
SDC-450-CI	4.5 (114.3)	3.5 (88.9)	-	CS-600-F 10.75
SDC-500-CI	5.0 (127.0)	4.0 (101.6)	-	CS-600-F 10.75
SDC-550-CI	5.5 (139.7)	4.5 (114.3)	-	CS-600-F 10.75
SDC-600-CI	6.0 (152.4)	5.0 (127.0)	-	CS-600-F 10.75
SDC-650-CI	6.5 (165.1)	5.5 (139.7)	-	CS-600-F 10.75
SDC-700-CI	7.0 (177.8)	6.0 (152.4)	-	CS-600-F 10.75
SDC-750-CI	7.5 (190.5)	6.5 (165.1)	-	CS-600-F 10.75
SDC-800-CI	8.0 (203.2)	7.0 (177.8)	-	CS-600-F 10.75
SDC-850-CI	8.5 (215.9)	7.5 (190.5)	3.75 (95.3)	CS-600-F 14.00
SDC-900-CI	9.0 (228.6)	8.0 (203.2)	4.00 (101.6)	CS-600-F 14.00
SDC-950-CI	9.5 (241.3)	8.5 (215.9)	4.25 (108.0)	CS-600-F 14.00
SDC-1000-CI	10.0 (254.0)	9.0 (228.6)	4.50 (114.3)	CS-600-F 14.00
SDC-1050-CI	10.5 (266.7)	9.5 (241.3)	4.75 (120.7)	CS-600-F 14.00
SDC-1100-CI	11.0 (279.4)	10.0 (254.0)	5.00 (127.0)	CS-600-F 14.00



Recommend



STANDARD TOLERANCES
(UNLESS OTHERWISE SPECIFIED)

DECIMALS	ANGLES
.X ±.1	X°
.XX ±.01	
.XXX ±.005	

DESIGNED: **R. Paje** DATE: **05/0/**
 CHECKED: **T. Yin** DATE: **05/0/**

Looking for pricing, stock, or lifecycle information?

Click below to explore more details on WIN SOURCE:

-  [View SDC-350-CI on WIN SOURCE](#)
-  [Bivar Inc. Information](#)

Optimize Your Supply Chain with WIN SOURCE Solutions

-  Global Sourcing Solution
-  Obsolete Management
-  Cost Control Management
-  Shortage Management
-  Alternative Solution
-  Excess Inventory Management