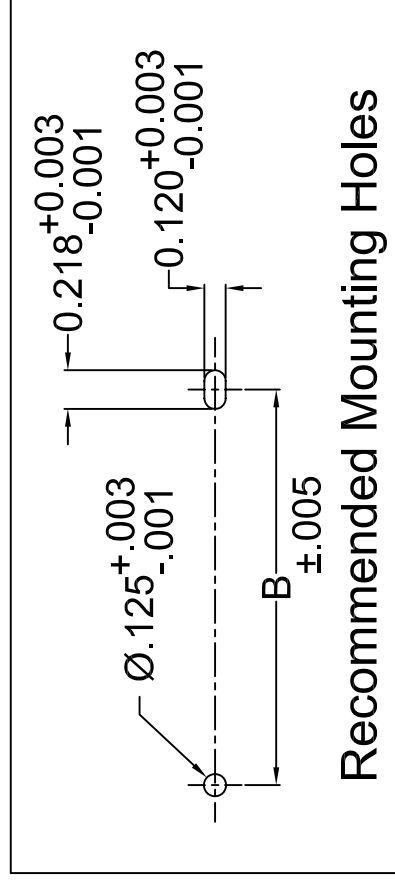
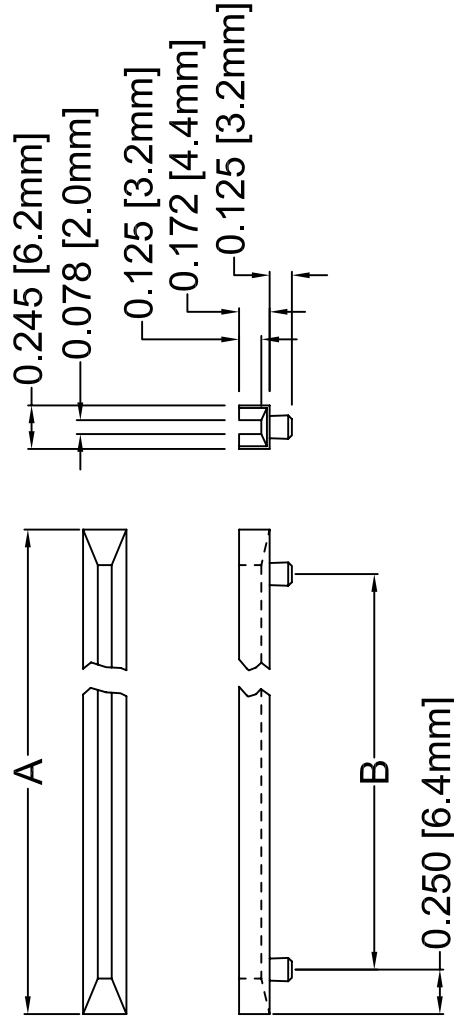


REV.	DESCRIPTION
B	Engineering Update w
C	Unit Conversion and T
D	Updated Material and





Part No.	A
S-250	± 0.030 [$\pm 0.76\text{mm}$]
S-300	2.538 (64.5mm)
S-350	3.045 (77.3mm)
S-400	3.553 (90.2)
S-450	4.060 (103.1mm)
S-500	4.568 (116.0mm)
S-550	5.075 (128.9mm)
S-600	5.583 (141.8mm)
S-650	6.090 (154.7mm)
S-700	6.598 (167.6mm)
S-750	7.105 (180.5mm)
S-800	7.613 (193.4mm)
S-850	8.120 (206.2mm)
	8.628 (219.2mm)

2. MATERIAL: NYLON 6/6, CARBON FIBER ESD, BLACK. (MODIFIED PLASTICS MN6/6-CF15 SE BK)
BIVAR MATERIAL CODE 15-GY.
1. GENERAL SPECIFICATIONS: BIVAR MOLDED COMPONENT SPECIFICATION BV00-E101.

STANDARD TOLERANCING (UNLESS OTHERWISE SPECIFIED)	
DECIMALS	$\pm .1$
ANGULAR	$X^\circ \pm$
	$.XX \pm .01$
	$.XXX \pm .005$
DESIGNED BY:	Michael Chen
DATE:	01/2
CHECKED BY:	D. Green
DATE:	01/2

Looking for pricing, stock, or lifecycle information?

Click below to explore more details on WIN SOURCE:

-  [View S-700 on WIN SOURCE](#)
-  [Bivar Inc. Information](#)

Optimize Your Supply Chain with WIN SOURCE Solutions

-  Global Sourcing Solution
-  Obsolete Management
-  Cost Control Management
-  Shortage Management
-  Alternative Solution
-  Excess Inventory Management