



**THE DATASHEET OF
SESDT-10-32-G-20.0-L**





(0.80 mm) .0315" PITCH • DISCRETE WIRE CABLE ASSEMBLY/COMPONENTS

SESDT	POSITIONS PER ROW	32	PLATING OPTION	ASSEMBLED LENGTH	OPTIONS
--------------	--------------------------	-----------	-----------------------	-------------------------	----------------

= Double Row
Blue *Teflon™
Fluoropolymer Cable
(32 AWG)

-05, -10, -15, -20
(Standard sizes)

-G
= 10 μ" (0.25 μm)
Gold on contact area,
3 μ" (0.08 μm) Gold on tail

-"XX.X"
= Assembled
Length in Inches
(76.2 mm) 03.0" min.

Double Ended Assemblies

-L1
= Pin 1 to Pin 1

-L2
= Pin 1 to Pin 2

-L3
= Pin 1 to Pin N-1

-L4
= Pin 1 to Pin N

Single Ended Assembly

-L
= Latching

SESDT

Board Mates:

TEM-L1

SPECIFICATIONS

Insulator Material:

Natural Nylon

Contact Material:

BeCu

Plating:

Au over 50 μ" (1.27 μm) Ni

Wire:

Tinned Copper

Wire Insulation:

FEP

Operating Temp Range:

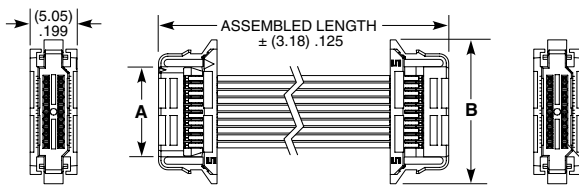
-55 °C to +125 °C

Current Rating:

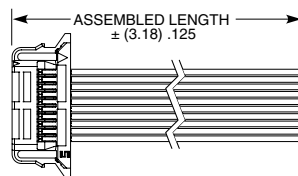
1.9 A per pin
(2 pins powered)

Voltage Rating:

200 VAC/280 VDC



DOUBLE ENDED



SINGLE ENDED

NO. OF POSITIONS	A	B
-05	(5.70) .224	(11.50) .453
-10	(9.70) .382	(15.50) .610
-15	(13.70) .539	(19.50) .768
-20	(17.70) .697	(23.50) .925

*Teflon™ is a trademark of The Chemours Company FC, LLC used under license by Samtec.

Note:

Teflon™ Fluoropolymer cable is intended for crimp only. Contact Samtec for solderable cable applications.

View complete specifications at: samtec.com?SESDT

ISDE	POSITIONS PER ROW	D	L	SERIES	WIRE GAUGE	PLATING	REEL OPTIONS
-------------	--------------------------	----------	----------	---------------	-------------------	----------------	---------------------

-05, -10, -15, -20
(Standard sizes)

-D
= Dual Row

-L
= Latch

CC396
= Contact

-3234
= 32 to 34 AWG

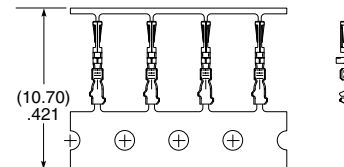
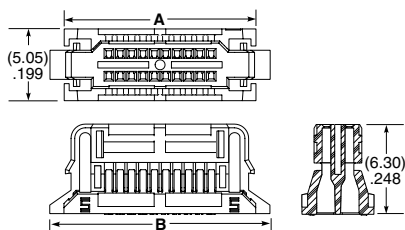
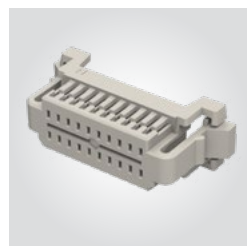
-G
= 10 μ" (0.25 μm)
Gold on contact area,
3 μ" (0.08 μm)
Gold on tail

-U
= Micro Reel
(4K Contacts)

-M
= Mini Reel
(15K Contacts)

-R
= Reel
(50K Contacts)

POSITIONS PER ROW	A	B
-05	(9.50) .374	(11.50) .453
-10	(13.50) .531	(15.50) .610
-15	(17.50) .689	(19.50) .768
-20	(21.50) .846	(23.50) .925



TOOLING

Hand Tool: CAT-HT-396-3232-12

Mini Applicator: CAT-MC-396-3232-XX-03

Note:

Some lengths, styles and options are non-standard, non-returnable

View complete specifications at: samtec.com?ISDE & samtec.com?CC396

Looking for pricing, stock, or lifecycle information?

Click below to explore more details on WIN SOURCE:

- ⊖ [View SESDT-10-32-G-20.0-L on WIN SOURCE](#)
- ⊖ [Samtec Inc. Information](#)

Optimize Your Supply Chain with WIN SOURCE Solutions

- ✓ Global Sourcing Solution
- ✓ Obsolete Management
- ✓ Cost Control Management
- ✓ Shortage Management
- ✓ Alternative Solution
- ✓ Excess Inventory Management