



**THE DATASHEET OF  
SGTM1S6-C**

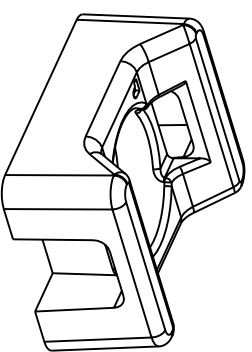
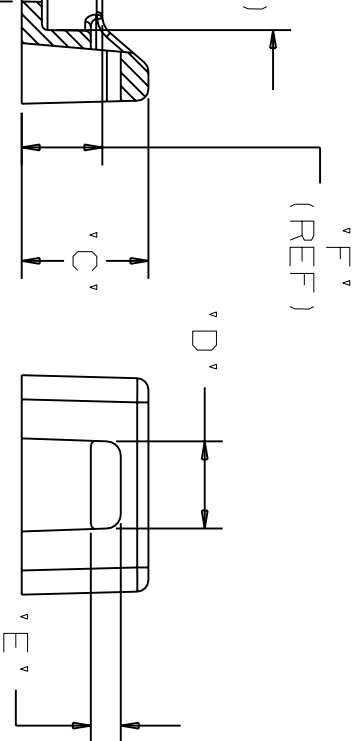
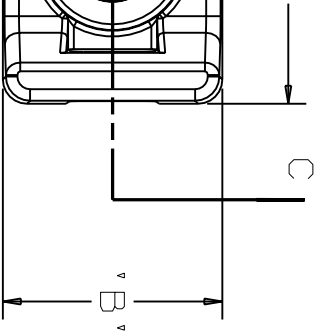


A RESTRICTED BASIS AND IS NOT TO BE USED IN ANY WAY DETRIMENTAL TO THE INTERESTS OF PANDUIT CORP.

REC'D M STENER	DIMENSIONS										WEIGHT	
	'A'	'B'	'C'	'D'	'E'	'F'	'G'	'H'	'J'	lbs	100 (g)	pcs
3 (M3) SCREW	0.51 (12.95)	0.38 (9.65)	0.22 (5.6)	0.151 (3.84)	0.051 (1.30)	0.14 (3.56)	0.10 (2.54)	0.257 (6.53)	0.153 (3.90)	0.78 (353.8)		

USE WITH THESE  
CABLE TIE  
CROSS SECTIONS

M,  
SG100M



DIMENSIONS IN BRACKETS ARE METRIC ( mm )

CAD FILENAME/LAYERS G03150F\_J\_PB\_SGTM156\_00

**PANDUIT**

CORP. TINLEY PARK, ILLINOIS

TIE MOUNT FOR SUPER GRIP TIES  
(SGTM156- \_ TMSG156- \_)

UNLESS OTHERWISE SPECIFIED,  
DIMENSIONAL TOLERANCES ARE:  
(.X) ±0.05 (1.3) (.XXX) ±0.010 (0.25)  
(.XX) ±0.02 (0.5) ANGLES 15°

UNLESS OTHERWISE SPECIFIED,  
ALL DIMENSIONS ARE GIVEN  
IN INCHES, THIRD ANGLE  
PROJECTION.

DRAWN BY  
JAD

MAT'L:

SCALE  
4X

DATE  
8/17/06

NYLON 6/6

DRAWING NO.  
GB3150F J

DWG  
SIZE  
A

INITIAL RELEASE  
DESCRIPTION

GB3150F J R  
ECN - R

CUST SUP

C - C

## Looking for pricing, stock, or lifecycle information?

Click below to explore more details on WIN SOURCE:

 [View SGTM1S6-C on WIN SOURCE](#)

 [Panduit Corp](#) Information

## Optimize Your Supply Chain with WIN SOURCE Solutions

-  Global Sourcing Solution
-  Obsolete Management
-  Cost Control Management
-  Shortage Management
-  Alternative Solution
-  Excess Inventory Management