



**THE DATASHEET OF
SMB7H-J-P-H-ST-EM1**



75 Ω SMB TO 4 GHz

SMB Cable Connectors RF179



SERIES	END 1 CONNECTOR	END 2 CONNECTOR	OVERALL LENGTH
--------	-----------------	-----------------	----------------

RF179
= RG 179 Cable

-77SP1
= 75 Ω SMB Straight Plug

-77RP1
= 75 Ω SMB Right-angle Plug

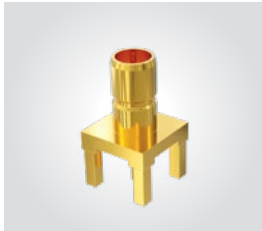
-“XXXX”
= Overall Length in millimeters
-0100 (100 mm) 3.94" minimum

ALSO AVAILABLE

75 Ω: DIN 1.0/2.3, BNC, MCX, MMCX = RF179

SMB Cable Connectors SMB7H-TH, SMB7H-EM

Cable Mates:
RF179, GRF7H-C



SMB7H	GENDER	TYPE	PLATING	ORIENTATION	TERMINATION
-------	--------	------	---------	-------------	-------------

-J
= Jack

-P
= PCB Mount

-H
= 30 μ" (0.76 μm) Gold center contact,
3 μ" (0.08 μm) Gold outer contact

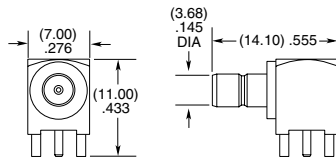
-ST
= Straight

-RA
= Right-angle

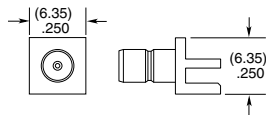
-TH1
= Through-hole ((0.90 mm) .035" DIA Signal Pin)

-TH2
= Through-hole ((0.51 mm) .020" DIA Signal Pin) (-ST only)

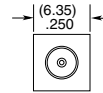
-EM1
= Edge Mount (-ST only)



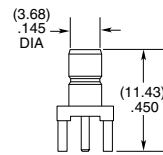
-RA-TH1



-ST-EM1



-ST-TH1 & -ST-TH2



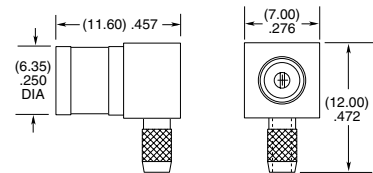
Note:
Additional plating options available on Cable Assemblies, Cable Connectors and Board Connectors. Contact RFGroup@samtec.com

SMB Cable Connectors SMB7H-CA

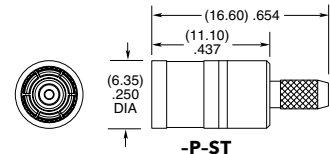


CONNECTORS FOR INDUSTRY STANDARD CABLES	
SMB7H-P-C-H-ST-CA3	RG 179 Cable
SMB7H-P-C-HF-RA-CA3	RG 179 Cable

P-C = Cable Plug
H or HF = Plating (30 μ" Gold center contact, 3 μ" Gold outer contact)
ST = Straight
RA = Right-angle



-P-RA



-P-ST

Supplied with pins and ferrules.
See website for dimensions

Looking for pricing, stock, or lifecycle information?

Click below to explore more details on WIN SOURCE:

- ⊖ [View SMB7H-J-P-H-ST-EM1 on WIN SOURCE](#)
- ⊖ [Samtec Inc. Information](#)

Optimize Your Supply Chain with WIN SOURCE Solutions

- ✓ Global Sourcing Solution
- ✓ Obsolete Management
- ✓ Cost Control Management
- ✓ Shortage Management
- ✓ Alternative Solution
- ✓ Excess Inventory Management