



**THE DATASHEET OF**  
**S811-1X1T-36-F**



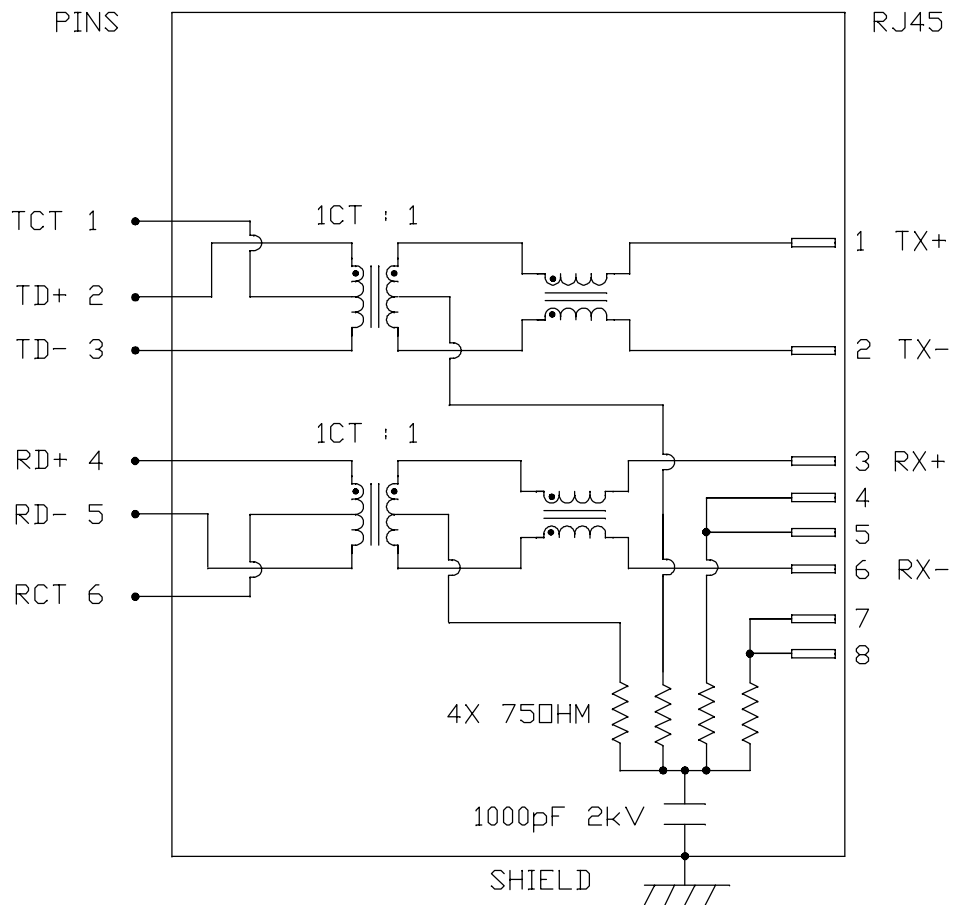
THE INFORMATION CONTAINED HEREIN IS CONSIDERED "PROPRIETARY" TO BEL FUSE INC. AND SHALL NOT BE COPIED, REPRODUCED OR DISCLOSED WITHOUT THE WRITTEN APPROVAL OF BEL FUSE INC.



SCHEMATIC

ELECTRICAL CHARACTERISTICS @ 25°C

<b>URNS RATIO</b>	
TX	1CT : 1
RX	1CT : 1
<b>CL @ 100kHz/100mVRMS</b>	
8mA DC BIAS	350µH MIN.
<b>INS. LOSS</b>	
1MHz TO 100MHz	-1.0 dB MAX
<b>RET. LOSS (MIN)</b>	
1MHz-30MHz	-18 dB
30MHz-60MHz	-18+20LOG(F/30MHz) dB
60MHz-80MHz	-12 dB
<b>CROSS TALK (TX - RX)</b>	
500kHz-100MHz	-35 dB MIN
<b>CM TO CM REJ</b>	
100kHz-100MHz	-30 dB MIN
<b>CM TO DM REJ</b>	
100kHz-100MHz	-40 dB MIN
<b>HIPOT (Isolation Voltage):</b>	
100% OF PRODUCTION TESTED TO COMPLY WITH IEEE 802.3 ISOLATION REQUIREMENT	1500 Vrms
<b>OPERATING TEMPERATURE: -40°C TO 85°C</b>	



**ORIGINATED BY**  
CHOW WANCHUNG  
**DATE** 2017-06-07

**DRAWN BY**  
XIE YIMING  
**DATE** 2017-06-07

**TITLE**  
MagJack®  
4 CORE, WITH CM TERM  
Extended temperature  
S811-1X1T-36-F

**PART NO. / DRAWING NO.**  
S8111X1T36-F

**FILE NAME**  
S8111X1T36-F\_E.DWG

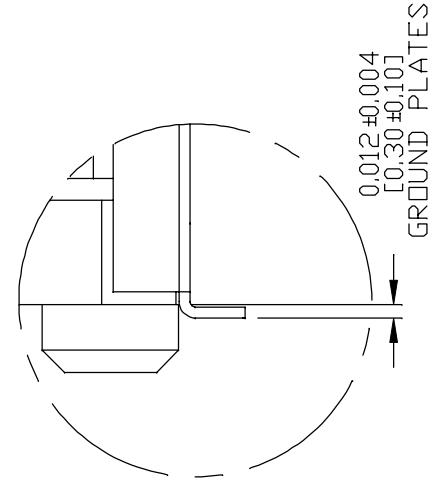
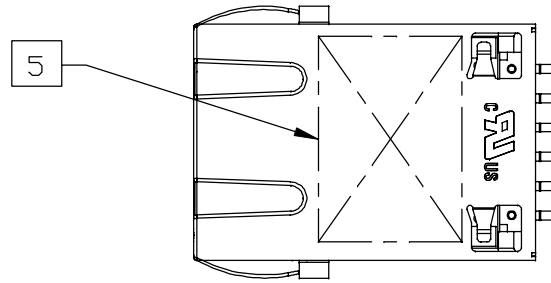
<b>STANDARD DIM. TOL. IN INCH</b>	[ ] METRIC DIM. AS REF.
.X	UNIT : INCH [mm]
.XX	SCALE : N/A
.XXX	SIZE : A4

REV. : E      PAGE : 2

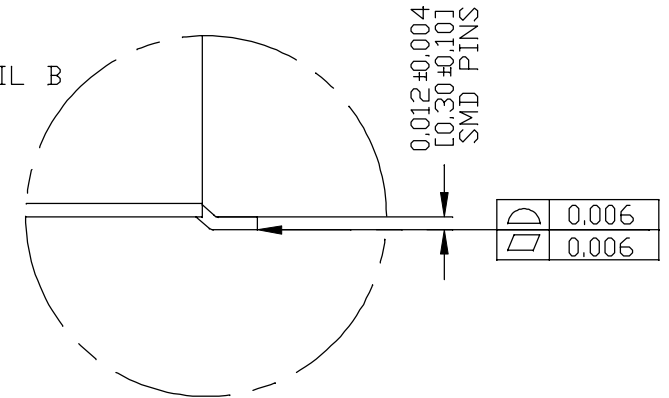
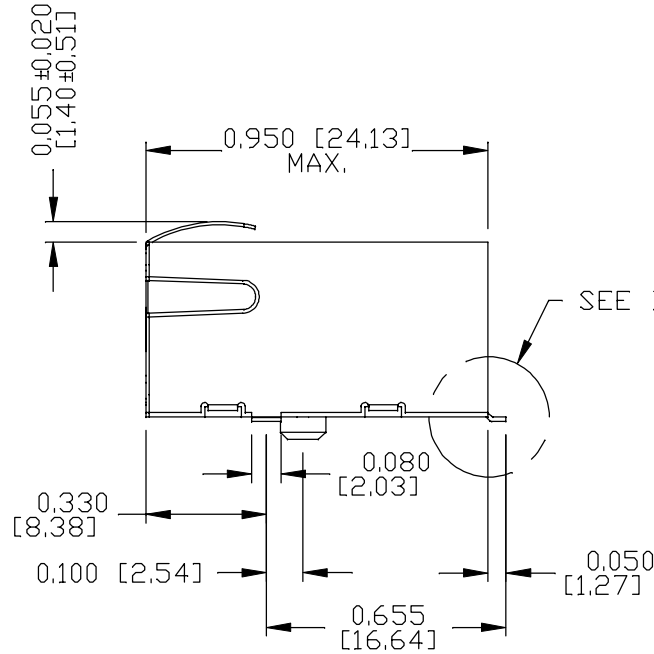
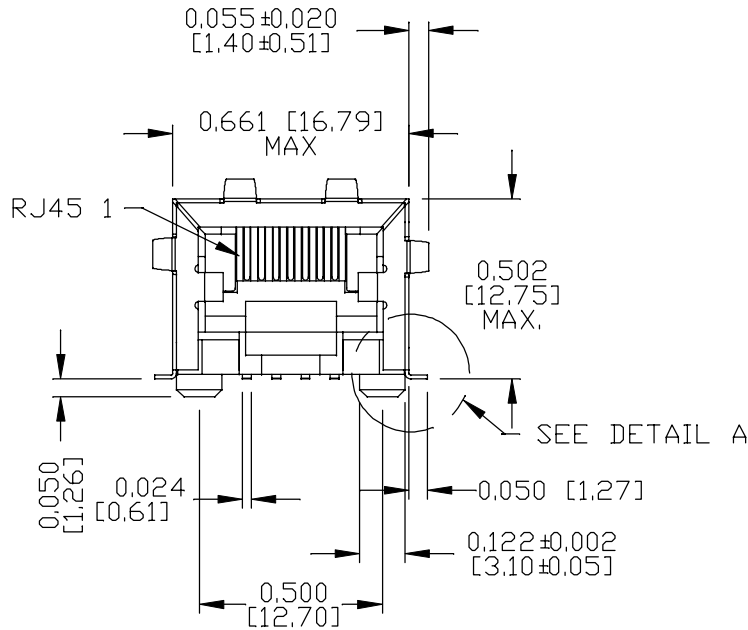
a bel group

THE INFORMATION CONTAINED HEREIN IS CONSIDERED "PROPRIETARY" TO BEL FUSE INC. AND SHALL NOT BE COPIED, REPRODUCED OR DISCLOSED WITHOUT THE WRITTEN APPROVAL OF BEL FUSE INC.

RoHS



DETAIL A  
SCALE 3:1



DETAIL B  
SCALE 3:1

ORIGINATED BY  
ANTON LIAO  
DATE 2017-06-07  
DRAWN BY  
SANDY LIN  
DATE 2017-06-07

TITLE  
MagJack®  
4 CORE, WITH CM TERM  
Extended temperature  
S811-1X1T-36-F

PART NO. / DRAWING NO.  
S811X1T36-F  
FILE NAME  
S811X1T36-F\_E.DWG

STANDARD DIM. TOL. IN INCH	[ ] METRIC DIM. AS REF.
.X	UNIT : INCH [mm]
.XX	SCALE : N/A
.XXX	SIZE : A4

REV. : E	PAGE : 3
a bel group	

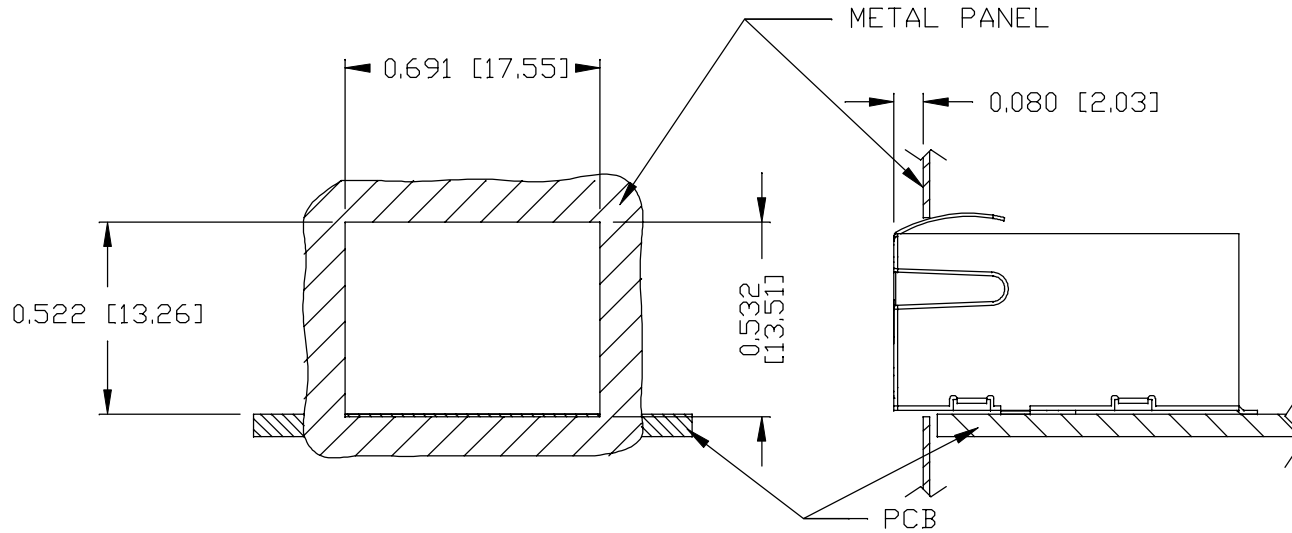


THE INFORMATION CONTAINED HEREIN IS CONSIDERED "PROPRIETARY" TO BEL FUSE INC. AND SHALL NOT BE COPIED, REPRODUCED OR DISCLOSED WITHOUT THE WRITTEN APPROVAL OF BEL FUSE INC.

RoHS



SUGGESTED PANEL OPENING



NOTES:

THE DISTANCE OF PANEL INSIDE SURFACE RELATIVE TO FRONT SURFACE OF PART IS ONLY A SUGGESTION.

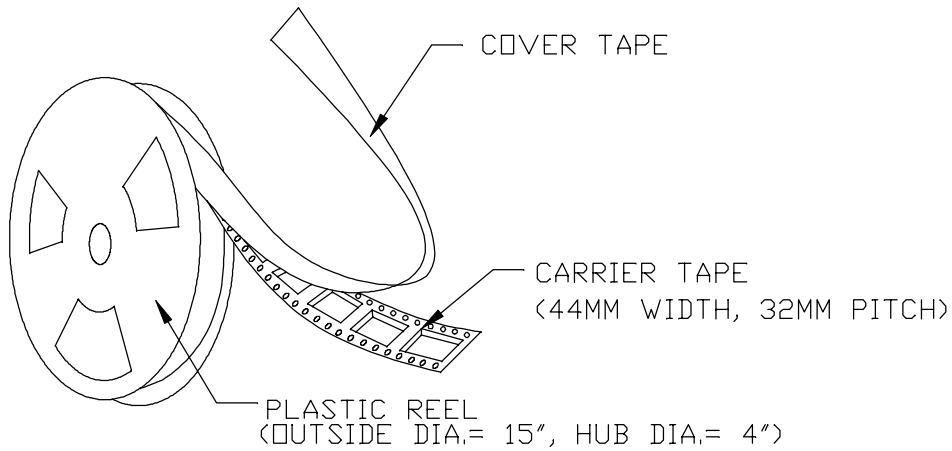
IN CASE THIS DISTANCE IS DIFFERENT, THE REQUIRED PANEL OPENING DIMENSIONS CHANGE ACCORDINGLY.

REV. :	E	PAGE :	5
--------	---	--------	---

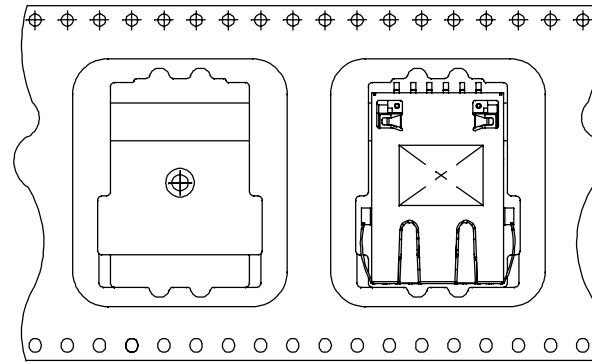
<b>ORIGINATED BY</b> ANTON LIAO <b>DATE</b> 2017-06-07	<b>TITLE</b> MagJack® 4 CORE, WITH CM TERM Extended temperature S811-1X1T-36-F	<b>PART NO. / DRAWING NO.</b> S8111X1T36-F	<b>STANDARD DIM. TOL. IN INCH</b> .X	<b>[ ] METRIC DIM. AS REF.</b>
		<b>FILE NAME</b> S8111X1T36-F_E.DWG	.XX	UNIT : INCH [mm] SCALE : N/A
			.XXX ±0.004	SIZE : A4



THE INFORMATION CONTAINED HEREIN IS CONSIDERED "PROPRIETARY" TO BEL FUSE INC. AND SHALL NOT BE COPIED, REPRODUCED OR DISCLOSED WITHOUT THE WRITTEN APPROVAL OF BEL FUSE INC.



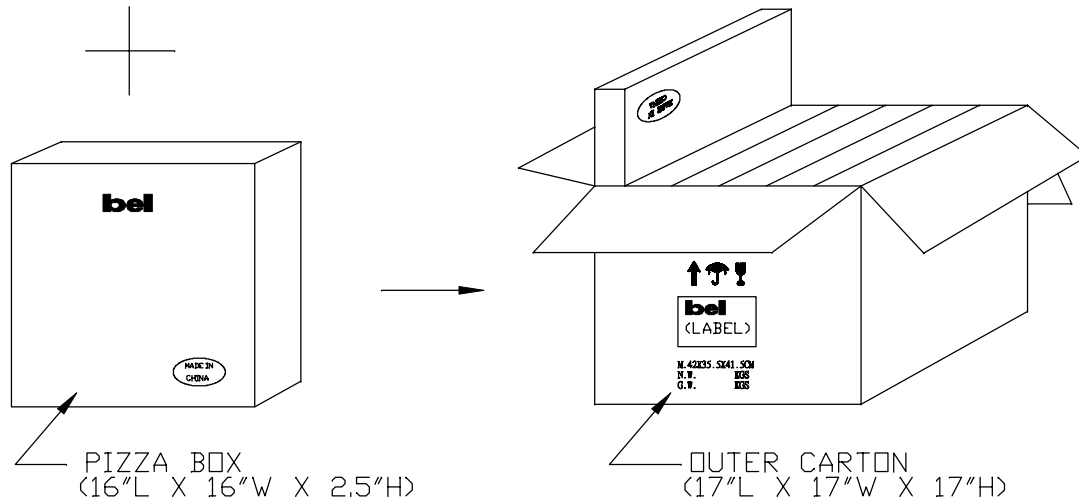
USER FEED DIRECTION



PART ORIENTATION & FEEDING DIRECTION.

NOTES:

- 1) LEAVES 48 INCHES COVER TAPE AND 5 EMPTY POCKETS AT TRAILER.
- 2) LEAVES 24 INCHES COVER TAPE AND 13 EMPTY POCKETS AT LEADER.
- 3) PACK 175 PCS PER REEL.
- 4) EACH PIZZA BOX CONTAINS ONE (1) REEL, (175 PCS FINISHED GOODS EACH PIZZA BOX).
- 5) EACH OUTER CARTON CONTAINS SIX (6) PIZZA BOXES, (1050 PCS FINISHED GOODS EACH OUTER CARTON).



ORIGINATED BY  
ANTON LIAO  
DATE 2017-06-07

DRAWN BY  
SANDY LIN  
DATE 2017-06-07

TITLE  
MagJack®  
4 CORE, WITH CM TERM  
Extended temperature  
S811-1X1T-36-F

PART NO. / DRAWING NO.  
S811X1T36-F

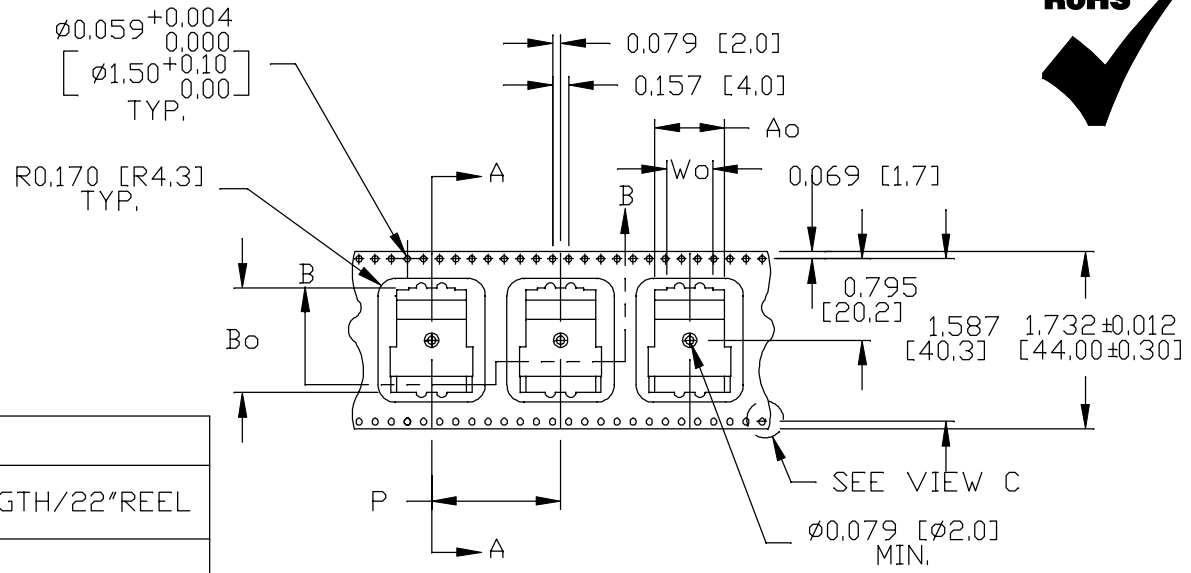
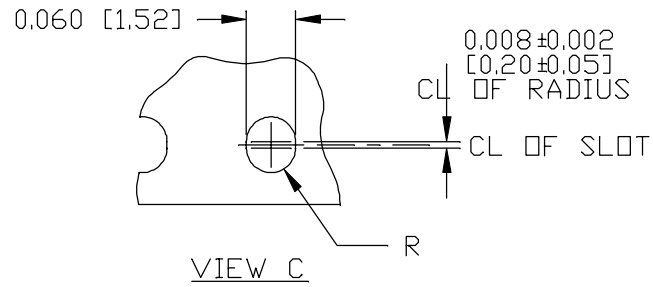
FILE NAME  
S811X1T36-F\_E.DWG

STANDARD DIM. TOL. IN INCH	[ ] METRIC DIM. AS REF.
.X	UNIT : INCH [mm]
.XX	SCALE : N/A
.XXX	SIZE : A4

REV. : E PAGE : 6



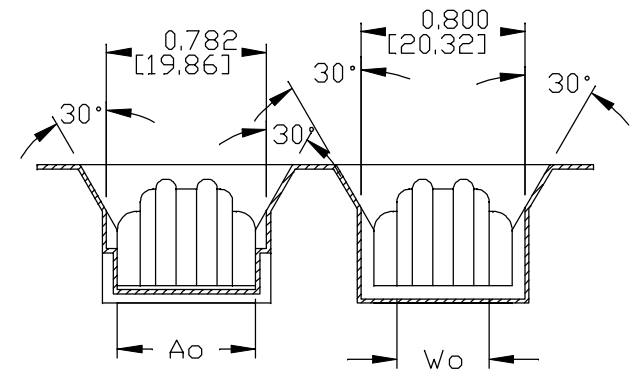
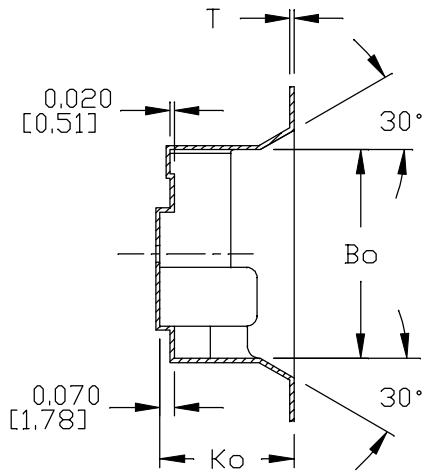
THE INFORMATION CONTAINED HEREIN IS CONSIDERED "PROPRIETARY" TO BEL FUSE INC. AND SHALL NOT BE COPIED, REPRODUCED OR DISCLOSED WITHOUT THE WRITTEN APPROVAL OF BEL FUSE INC.



DIMENSION CHART							
PART NUMBER	Ao	Bo	Ko	P	Wo	T	LENGTH/22" REEL
N220-0405-46	0,670 [17,02]	1,010 [25,65]	0,635 [16,13]	1,260 [32,00]	0,505 [12,83]	0,020 [0,50]	13 METERS

NOTES :

1. ALL OTHER SPECIFICATIONS SHOULD MEET EIA 481-D STANDARD.
2. CARRIER TAPE: N220-0405-46



FOR CARRIER TAPE

REV. : E PAGE : 7

ORIGINATED BY  
ANTON LIAO  
DATE 2017-06-07  
DRAWN BY  
SANDY LIN  
DATE 2017-06-07

TITLE  
MagJack®  
4 CORE, WITH CM TERM  
Extended temperature  
S811-1X1T-36-F

PART NO. / DRAWING NO.  
S811X1T36-F  
FILE NAME  
S811X1T36-F\_E.DWG

STANDARD DIM. [ ] METRIC DIM. AS REF.  
TOL. IN INCH  
.X UNIT : INCH [mm]  
.XX SCALE : N/A  
.XXX ±0.004 SIZE : A4



## Looking for pricing, stock, or lifecycle information?

Click below to explore more details on WIN SOURCE:

 [View S811-1X1T-36-F on WIN SOURCE](#)

 [Bel Fuse Inc. Information](#)

## Optimize Your Supply Chain with WIN SOURCE Solutions

-  Global Sourcing Solution
-  Obsolete Management
-  Cost Control Management
-  Shortage Management
-  Alternative Solution
-  Excess Inventory Management