

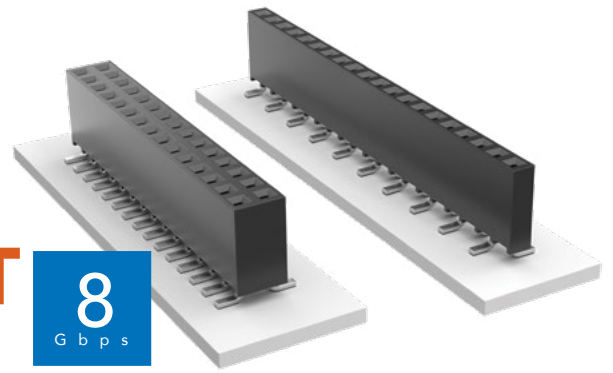


**THE DATASHEET OF  
SSW-110-22-S-D-VS**



# SURFACE MOUNT .025" SQ POST SOCKET

(2.54 mm) .100" PITCH • SSW SERIES



## SSW

### Mates:

TSW, MTSW, HTSW,  
HMTSW, MTLW, EW, ZW,  
TSS, HTSS, ZSS, TSM,  
TSSH, DW, HW

## SPECIFICATIONS

### Insulator Material:

Black LCP

### Contact Material:

Phosphor Bronze

### Plating:

Au or Sn over

50 μ" (1.27 μm) Ni

### Current Rating (SSW/TSM):

4.7 A per pin

(2 pins powered)

### Operating Temp Range:

-55 °C to +125 °C with Gold

-55 °C to +105 °C with Tin

### Insertion Depth:

(3.68 mm) .145" to

(6.35 mm) .250"

### Max Cycles:

100 with 10 μ" (0.25 μm) Au

### Voltage Rating:

465 VAC / 655 VDC

## PROCESSING

### Lead-Free Solderable:

Yes

### SMT Lead Coplanarity:

(0.10 mm) .004" max

## ALSO AVAILABLE

MOQ Required

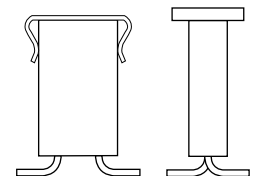
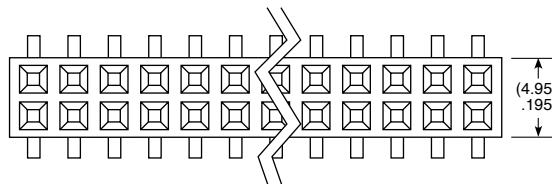
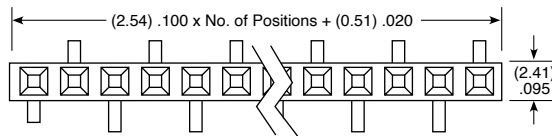
Other platings

Notch option

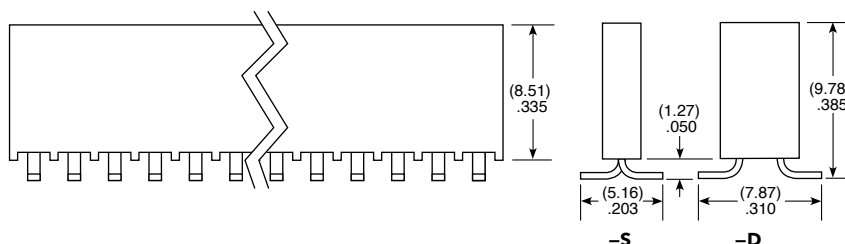
### Note:

Some lengths, styles and options are non-standard, non-returnable.

SSW	1	NO. PINS PER ROW	22	PLATING OPTION	ROW OPTION	VS	OTHER OPTION
		02 thru 36		<p><b>-F</b> = Gold flash on contact, Matte Tin on tail</p> <p><b>-L</b> = 10 μ" (0.25 μm) Gold on contact, Matte Tin on tail</p> <p><b>-G</b> = 20 μ" (0.51 μm) Gold on contact, Gold flash on tail</p>	<p><b>-S</b> = Single Row</p> <p><b>-D</b> = Double Row</p>		<p><b>-"XX"</b> = Polarized Position</p> <p><b>-K</b> = -S: (3.50 mm) .138" DIA, -D: (6.50 mm) .256" DIA Polyimide film Pick &amp; Place Pad (03 positions min.)</p> <p><b>-P</b> = Pick &amp; Place Pad (05 positions min.)</p> <p><b>-TR</b> = Tape &amp; Reel (-02 thru -28)</p> <p><b>-FR</b> = Full Reel Tape &amp; Reel (must order max. quantity per reel; contact Samtec for quantity breaks) (-02 thru -28)</p>





-P OPTION



## Looking for pricing, stock, or lifecycle information?

Click below to explore more details on WIN SOURCE:

-  [View SSW-110-22-S-D-VS on WIN SOURCE](#)
-  [Samtec Inc. Information](#)

## Optimize Your Supply Chain with WIN SOURCE Solutions

-  Global Sourcing Solution
-  Obsolete Management
-  Cost Control Management
-  Shortage Management
-  Alternative Solution
-  Excess Inventory Management