



**THE DATASHEET OF  
SFC-112-T2-L-D-A-K**



# RUGGED TIGER EYE™ SYSTEMS

(1.27 mm) .050" PITCH

MAX  
**3.7**  
A m p s

**8**  
G b p s

## FEATURES & BENEFITS

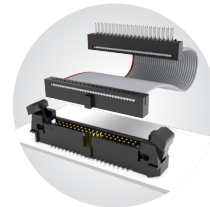
- Screw down, locking clip, friction latching and weld tab ruggedizing options
- Shrouded, polarized and keyed
- Surface mount or through-hole tails
- High-density, four row design (FOLC/MOLC Series)
- Discrete wire assemblies available in single or double row, 28 and 30 AWG PVC or \*Teflon™ Fluoropolymer (See pages 238-239). Contact [asp@samtec.com](mailto:asp@samtec.com) for custom solutions.
- Cable components (ISDF/CC03) and tooling available: [samtec.com/tooling](http://samtec.com/tooling)
- Severe Environment Testing qualified (SFM/TFM); aligns with MIL-DTL-55302. Visit [samtec.com/set](http://samtec.com/set)

\*Teflon™ is a trademark of The Chemours Company FC, LLC used under license by Samtec.

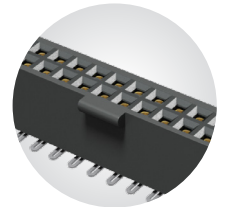
## KEY SPECIFICATIONS

| SERIES  | STACK HEIGHTS | INSULATOR MATERIAL | CONTACT MATERIAL                    | PLATING                          | OPERATING TEMP RANGE | CURRENT RATING                 | VOLTAGE RATING | MAX. CYCLES                              | LEAD-FREE SOLDERABLE |
|---------|---------------|--------------------|-------------------------------------|----------------------------------|----------------------|--------------------------------|----------------|--|----------------------|
| SFM/TFM | 6 to 12 mm    | Black LCP          | BeCu (SFM)<br>Phosphor Bronze (TFM) | Au or Sn over 50 μ" (1.27 μm) Ni | -55 °C to +125 °C    | 3.7A per pin (2 pins powered)  | 275 VAC        | 10,000 with 30 μ" (0.76 μm) Au           | Yes                  |
| SFC/TFM | 6 to 12 mm    | Black LCP          | Phosphor Bronze                     | Au or Sn over 50 μ" (1.27 μm) Ni | -55 °C to +125 °C    | 3.1 A per pin (2 pins powered) | 350 VAC        | (Call Samtec for E.L.P.™ plating option) | Yes                  |

**TIGER™  
EYE**  
CONTACT



IDC cable assemblies with rugged strain relief (FFSD/FFMD, FFTP/FMTP)



Locking for increased unmating force (SFML/TFML)

**(1.27 mm) .050" PITCH • COST-EFFECTIVE HEADER/SOCKET**

| SFC | 1 | NO. PINS PER ROW   | LEAD STYLE  | PLATING OPTION   | D | OPTIONS  |
|-----|---|--|---|--|---|--|
|     |   | 04, 05, 10, 15, 20, 25, 30, 35, 40, 45, 50<br>(Standard sizes) | <b>-T1</b><br>= Through-hole Tiger Eye™ LITE<br><br><b>-T2</b><br>= Surface Mount Tiger Eye™ LITE | <b>-F</b><br>= Gold flash on contact, Matte Tin on tail<br><br><b>-L</b><br>= 10 μ" (0.25 μm) Gold on contact, Matte Tin on tail |   | <b>-A</b><br>= Alignment Pin<br><br><b>-K</b><br>= (4.00 mm) .157" DIA Polyimide film Pick & Place Pad<br><br><b>-TR</b><br>= Tape & Reel (-T2 only)<br><br><b>-FR</b><br>= Full Reel Tape & Reel (must order max. quantity per reel; contact Samtec for quantity breaks) (-T2 only) |

**SFC**  
Board Mates:  
TFC  
Cable Mates:  
TFS, TFSDT





View complete specifications at: [samtec.com?SFC](http://samtec.com?SFC)

**-A OPTION**

**-T1**      **-T2**

| TFC | 1 | NO. PINS PER ROW  | LEAD STYLE  | PLATING OPTION   | D | OPTIONS   |
|-----|---|---|---|--|---|---|
|     |   | 03, 04, 06, 08<br>(Lead Style -01 & -02 only)<br><br>05, 07, 10, 15, 20, 25, 30, 35, 40, 45, 50<br>(Standard sizes) | <b>-X1</b><br>= Through-hole<br><br><b>-X2</b><br>= Surface Mount | <b>-F</b><br>= Gold flash on post, Matte Tin on tail<br><br><b>-L</b><br>= 15 μ" (0.38 μm) Gold on post, Matte Tin on tail |   | <b>-RA</b><br>= Right-angle (-01 only)<br><br><b>-A</b><br>= Alignment Pin<br><br><b>-LC</b><br>= Locking Clip (Manual Placement required) (not available with -RA)<br><br><b>-K</b><br>= (6.75 mm) .266" DIA Polyimide film Pick & Place Pad (not available with -RA)<br><br><b>-P</b><br>= Plastic Pick & Place Pad (5 positions min.) (not available with -RA)<br><br><b>-TR</b><br>= Tape & Reel (-X2 only) (not available with -RA)<br><br><b>-FR</b><br>= Full Reel Tape & Reel (must order max. quantity per reel; contact Samtec for quantity breaks) (-X2 only) (not available with -RA) |

**TFC**  
Board Mates:  
SFC  
Cable Mates:  
SFS, SFSDT





View complete specifications at: [samtec.com?TFC](http://samtec.com?TFC)

| SMT LEAD STYLE | A            | B           | TH LEAD STYLE | A            | B           |
|----------------|--------------|-------------|---------------|--------------|-------------|
| -02            | (5.72) .225  | (3.38) .133 | -01           | (5.59) .220  | (3.38) .133 |
| -12            | (7.49) .295  |             | -11           | (7.37) .290  |             |
| -22            | (9.27) .365  | (3.30) .130 | -21           | (9.14) .360  | (3.30) .130 |
| -32            | (11.18) .440 |             | -31           | (11.05) .435 |             |

**Note:**  
Some lengths, styles and options are non-standard, non-returnable.

## Looking for pricing, stock, or lifecycle information?

Click below to explore more details on WIN SOURCE:

- ⊖ [View SFC-112-T2-L-D-A-K on WIN SOURCE](#)
- ⊖ [Samtec Inc. Information](#)

## Optimize Your Supply Chain with WIN SOURCE Solutions

- ✓ Global Sourcing Solution
- ✓ Obsolete Management
- ✓ Cost Control Management
- ✓ Shortage Management
- ✓ Alternative Solution
- ✓ Excess Inventory Management