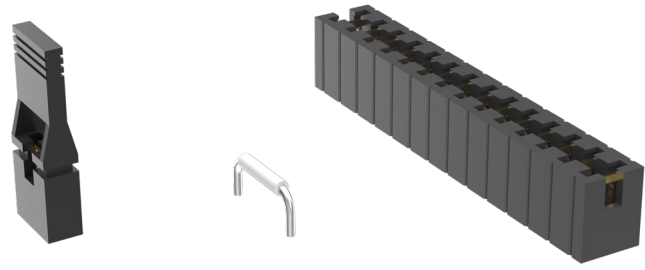




**THE DATASHEET OF
SNM-100-BK-G**



SHUNTS & JUMPERS



(2.54 mm) .100" PITCH • SNT/MNT/2SN/SNM/PK/JL SERIES

SNT/MNT

Mates:

TSW, HTSW, MTSW,
HMTSW, TLW, DW, EW,
ZW, HW, TSM, BST, PHT

2SN

Mates:

TMMH, TMM,
MTMM, MMT, TW,
LTMM, ZLTMM, TSH, EHT

SNM

Mates:

TMS, MTMS, DWM

SPECIFICATIONS

SNT

Insulator Material:

Glass Filled Polyester

Contact Material:

Phosphor Bronze

Current Rating (SNT/TSW):

4.3 A per pin

(1 pin powered per row)

Operating Temp Range:

-55 °C to +125 °C (Gold)

-55 °C to +105 °C (Tin)

Insertion Depth:

(4.32 mm) .170" minimum

Lead Size accepted:

(0.64 mm) .025" SQ

MNT

Same as SNT except:

Current Rating (MNT/TSM):

3.9 A per pin

(1 pin powered per row)

Working Voltage:

450 VAC

2SN

Same as SNT except:

Insertion Depth:

(2.29 mm) .090" minimum

Lead Size accepted:

(0.51 mm) .020" SQ

SNM

Same as SNT except:

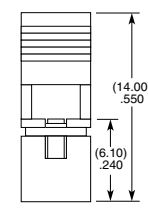
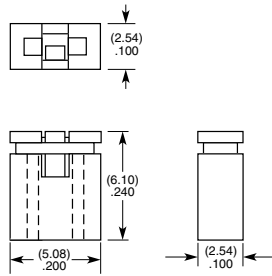
Insertion Depth:

(3.43 mm) .135" minimum

Max Processing Temp:

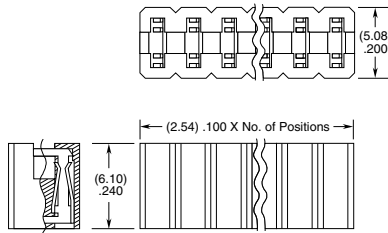
Not recommended for IR/VP

SNT	100	BODY COLOR	PLATING OPTION	HANDLE OPTION
		-BK = Black	-G = 10 μ" (0.25 μm) Gold	-H = Handle (Black Only)
		-RD = Red	-T = Tin	
		-BL = Blue		
		-YW = Yellow		



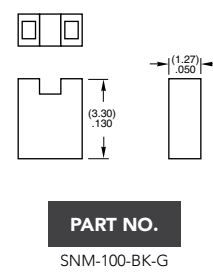
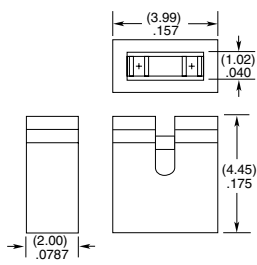
Note:
Other Gold plating options available.

MNT	1	NO. OF POSITIONS	BODY COLOR	PLATING OPTION
		02 thru 20	-BK = Black	-G = 10 μ" (0.25 μm) Gold
			-T = Tin	



Note:
Some lengths, styles and options are non-standard, non-returnable.

2SN	SNM
PART NO. 2SN-BK-G	PART NO. SNM-100-BK-G



JL	
PART NO.	A
JL-100-25-T	(2.54) .100
JL-250-25-T	(6.35) .250
JL-400-25-T	(10.16) .400

Note:
For complete specifications see www.samtec.com?JL

PK

PART NO.	A	B
PK-01-06	(0.64) .025 SQ	(5.84) .230
PK-01-07	(0.51) .020 SQ	(3.18) .125

Insulator Material:
Natural Thermoplastic

Note:
Order per wheel.
6 pins per wheel.

Looking for pricing, stock, or lifecycle information?

Click below to explore more details on WIN SOURCE:

 [View SNM-100-BK-G on WIN SOURCE](#)

 [Samtec Inc. Information](#)

Optimize Your Supply Chain with WIN SOURCE Solutions

-  Global Sourcing Solution
-  Obsolete Management
-  Cost Control Management
-  Shortage Management
-  Alternative Solution
-  Excess Inventory Management