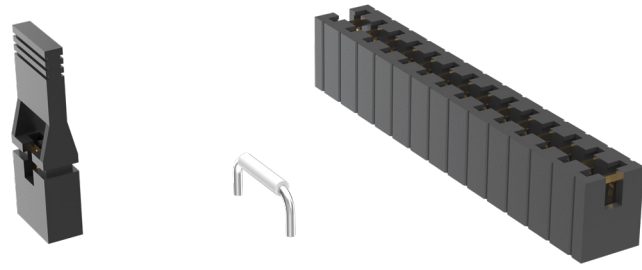




**THE DATASHEET OF  
SNT-100-OR-T**



# SHUNTS & JUMPERS



(2.54 mm) .100" PITCH • SNT/MNT/2SN/SNM/PK/JL SERIES

## SNT/MNT

### Mates:

TSW, HTSW, MTSW,  
HMTSW, TLW, DW, EW,  
ZW, HW, TSM, BST, PHT

## 2SN

### Mates:

TMMH, TMM,  
MTMM, MMT, TW,  
LTMM, ZLTMM, TSH, EHT

## SNM

### Mates:

TMS, MTMS, DWM

## SPECIFICATIONS

### SNT

#### Insulator Material:

Glass Filled Polyester

#### Contact Material:

Phosphor Bronze

#### Current Rating (SNT/TSW):

4.3 A per pin

(1 pin powered per row)

#### Operating Temp Range:

-55 °C to +125 °C (Gold)

-55 °C to +105 °C (Tin)

#### Insertion Depth:

(4.32 mm) .170" minimum

#### Lead Size accepted:

(0.64 mm) .025" SQ

### MNT

Same as SNT except:

#### Current Rating (MNT/TSM):

3.9 A per pin

(1 pin powered per row)

#### Working Voltage:

450 VAC

### 2SN

Same as SNT except:

#### Insertion Depth:

(2.29 mm) .090" minimum

#### Lead Size accepted:

(0.51 mm) .020" SQ

### SNM

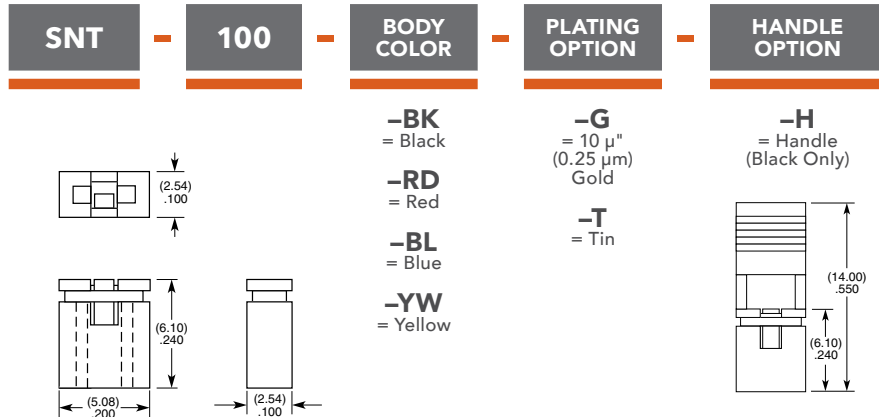
Same as SNT except:

#### Insertion Depth:

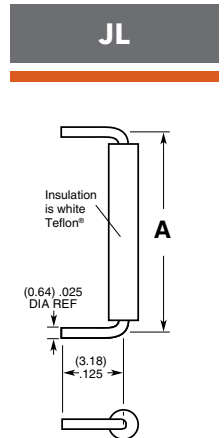
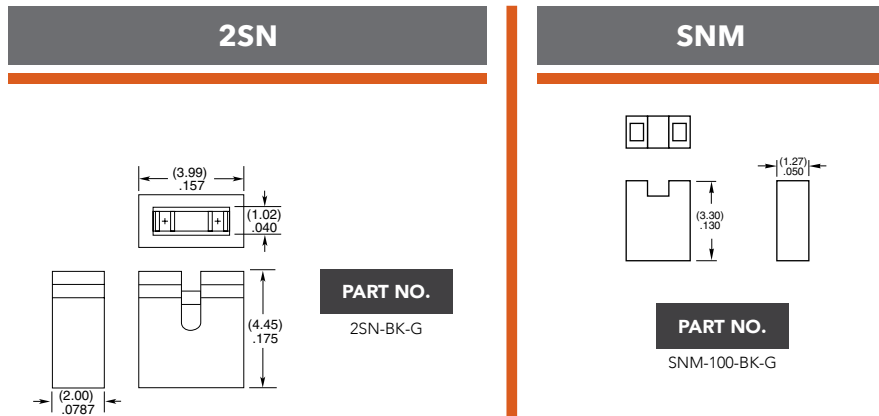
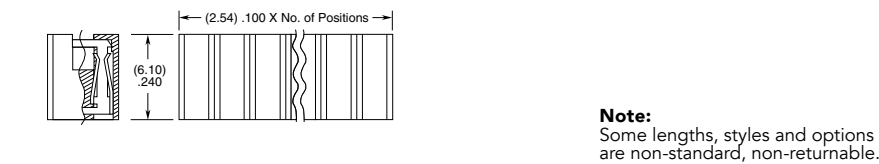
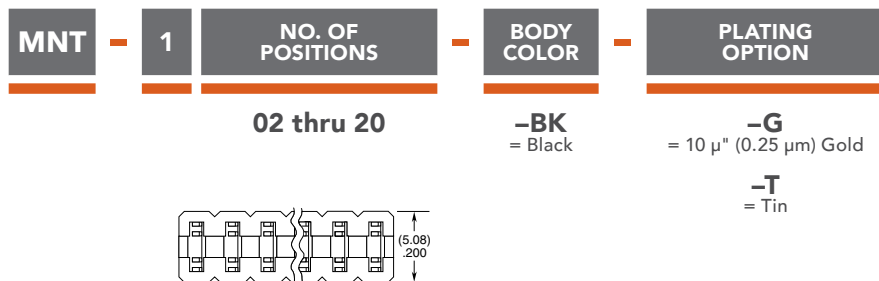
(3.43 mm) .135" minimum

#### Max Processing Temp:

Not recommended for IR/VP

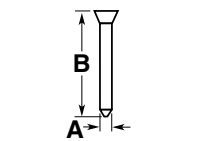


**Note:**  
Other Gold plating options available.



| PART NO.    | A            |
|-------------|--------------|
| JL-100-25-T | (2.54) .100  |
| JL-250-25-T | (6.35) .250  |
| JL-400-25-T | (10.16) .400 |

**Note:**  
For complete specifications see [www.samtec.com?JL](http://www.samtec.com?JL)



| PART NO. | A              | B           |
|----------|----------------|-------------|
| PK-01-06 | (0.64) .025 SQ | (5.84) .230 |
| PK-01-07 | (0.51) .020 SQ | (3.18) .125 |

**Insulator Material:**  
Natural Thermoplastic

**Note:**  
Order per wheel.  
6 pins per wheel.

## Looking for pricing, stock, or lifecycle information?

Click below to explore more details on WIN SOURCE:

 [View SNT-100-OR-T on WIN SOURCE](#)

 [Samtec Inc. Information](#)

## Optimize Your Supply Chain with WIN SOURCE Solutions

-  Global Sourcing Solution
-  Obsolete Management
-  Cost Control Management
-  Shortage Management
-  Alternative Solution
-  Excess Inventory Management