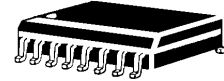




**THE DATASHEET OF**  
**S16-4150E3/TR13**



**S16-4148**  
And  
**S16-4150**  
**Switching Diode Array**



**FEATURES**

- 8 Isolated lines
- Standard SOIC 16 pin Surface Mount Package
- UL 94V-0 Flammability Classification

**MECHANICAL**

- Molded SOIC 16 Pin
- Weight: 2.5 grams (approximate)
- Marking: Logo, device number, date code
- Pin #1 defined by DOT on top of package
- 8 Pin pairs

**MAXIMUM RATINGS**

- Operating Temperatures: -55°C to +150°C
- Storage Temperature: -55°C to +150°C
- Forward Surge Current: 2.0Amps (8.3 mSec)

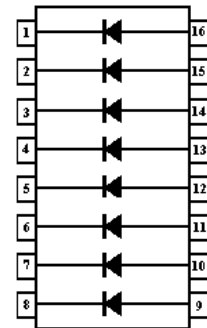
**PACKAGING**

- Carrier tubes 25 per (standard)

**ELECTRICAL CHARACTERISTICS PER LINE**

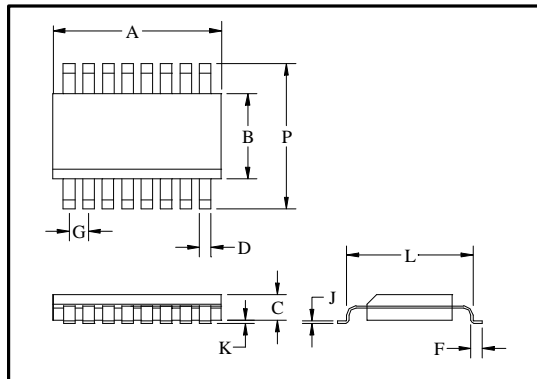
Characteristics @ 25°C Unless otherwise specified

**CIRCUIT DIAGRAM**



Part Number	Vbr @ Ibr = 100µA V MIN	Ir +25°C		Ir 150°C		CAP @ 0 V pF MAX	trr (nS) MAX
		µA MAX	V @Vr	µA MAX	V @Vr		
S16-4148	100	.025 .100	20 50	50 100	20 50	4.0	5.0
S16-4150	75	.500	75	100	75	2.5	4.0

Part Number	Vf @ If = 1.0mA V		Vf @ If = 10mA V		Vf @ If = 50mA V		Vf @ If = 100mA V		Vf @ If = 200mA V	
	MIN	MAX	MIN	MAX	MIN	MAX	MIN	MAX	MIN	MAX
S16-4148	-----	-----	-----	1.00	-----	-----	-----	1.20	-----	-----
S16-4150	0.54	0.62	0.66	0.74	0.76	0.86	0.82	0.92	0.87	1.00



DIM	INCHES		MILLIMETERS	
	MIN	MAX	MIN	MAX
A	0.358	0.398	9.09	10.10
B	0.150	0.158	3.81	4.01
C	0.053	0.069	1.35	1.75
D	0.011	0.021	0.28	0.53
F	0.016	0.050	0.41	1.27
G	0.050 BSC		1.27 BSC	
J	0.006	0.010	0.15	0.25
K	0.004	0.010	0.10	0.20
L	0.189	0.206	4.80	5.23
P	0.228	0.244	5.79	6.19

## Looking for pricing, stock, or lifecycle information?

Click below to explore more details on WIN SOURCE:

- ⊖ [View S16-4150E3/TR13 on WIN SOURCE](#)
- ⊖ [Microchip Technology](#) Information

## Optimize Your Supply Chain with WIN SOURCE Solutions

- ✓ Global Sourcing Solution
- ✓ Obsolete Management
- ✓ Cost Control Management
- ✓ Shortage Management
- ✓ Alternative Solution
- ✓ Excess Inventory Management