



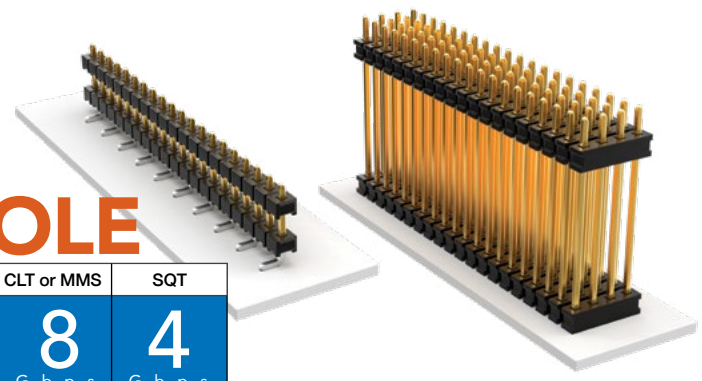
**THE DATASHEET OF
TW-08-12-S-D-720-200**



SMT & THROUGH-HOLE BOARD STACKERS

(2.00 mm) .0787" PITCH • TW SERIES

CLT or MMS	SQT
8	4
G b p s	G b p s



TW
Board Mates:
 CLT, SQT, SQW, ESQT,
 TLE, SMM, MMS

Cable Mates:
 TCS D

SPECIFICATIONS

Insulator Material:
 Black Liquid Crystal Polymer
Terminal Material:
 Phosphor Bronze
Plating:
 Sn or Au over
 50 μ" (1.27 μm) Ni
Current Rating:
 TW-SM = 4.9 A per pin
 (2 pins powered)
 TW-TH = 5.2 A per pin
 (2 pins powered)
Operating Temp Range:
 -55 °C to +105 °C with Tin;
 -55 °C to +125 °C with Gold

PROCESSING

Lead-Free Solderable:
 Yes
SMT Lead Coplanarity:
 (0.15 mm) .006" max*
 *(.004" stencil solution
 may be available; contact
 ipg@samtec.com)

ALSO AVAILABLE

MOQ Required

Other Platings
 End shrouds with or
 without guide post

Notes:
 For added mechanical
 stability, Samtec recommends
 mechanical board spacers be
 used in applications with gold or
 selective gold plated connectors.
 Contact ipg@samtec.com for
 more information.

This Series is non-standard,
 non-returnable.

TW	NO. PINS PER ROW	LEAD STYLE	PLATING OPTION	ROW OPTION	STACKER HEIGHT	SM	OTHER OPTION
----	------------------	------------	----------------	------------	----------------	----	--------------

02
thru
36

Specify
LEAD
STYLE
from
chart

-F
= Gold flash
on post,
Matte Tin
on tail

-S
= Single
Row

-D
= Double
Row

-"XXX"
= Stacker
Height
in inches
(0.13 mm)
.005"
increments

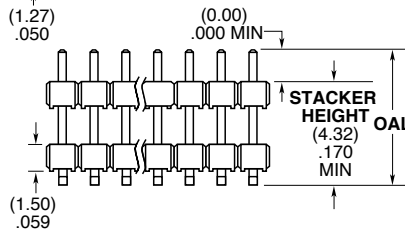
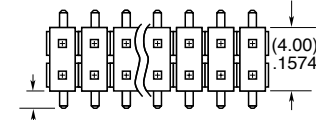
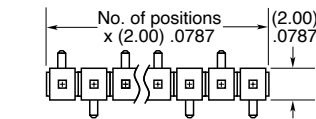
Example:
-250
= (6.35 mm)
.250"

-"XXX"
= Polarized Position

-A
= Alignment Pin
(Metal or plastic
at Samtec discretion)
(4.83 mm) .190" min.
board space
(-D only)

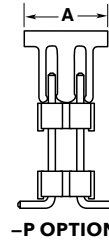
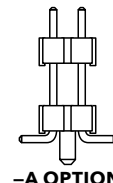
-P
= Pick & Place Pad
(1.91 mm) .075" min.
post height
(04-36 only)

-"X"R
Specify "T" for
Tape & Reel
Specify "F" for
Full Reel Tape & Reel
(must order max.
quantity per reel;
contact Samtec for
quantity breaks)
(-07 lead style N/A)
(-06 lead style with
-P option N/A
as standard)



LEAD STYLE	OAL
-02	(7.85) .309
-03	(11.86) .467
-04	(12.37) .487
-06	(15.37) .605
-07	(17.35) .683
-09	(9.86) .388

ROW OPTION	A
-S	(5.08) .200
-D	(6.35) .250



TW	NO. PINS PER ROW	LEAD STYLE	PLATING OPTION	ROW OPTION	STACKER HEIGHT	TAIL SPEC
----	------------------	------------	----------------	------------	----------------	-----------

02 thru 50

Specify
LEAD
STYLE
from
chart

-F
= Gold flash
on post,
Matte Tin
on tail

-S
= Single Row

-D
= Double Row

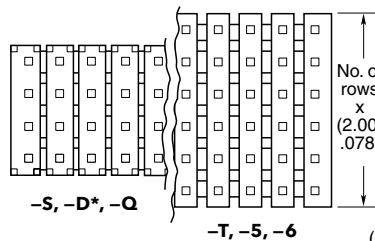
-"XXX"
= Stacker Height
in inches
(0.13 mm) .005"
increments

Example: -250
= (6.35 mm)
.250"

-"XXX"
= Tail Length
in inches
(0.13 mm) .005"
increments

Example: -150
= (3.81 mm)
.150"

-"XXX"
= Polarized
Position
(Specify
position to
be removed)



-L
= 10 μ" (0.25 μm)
Gold on
post,
Matte Tin
on tail

-T
= Triple Row

-Q
= Four Row

-5
= Five Row

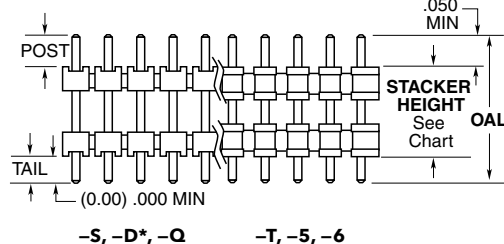
-6
= Six Row

LEAD STYLE	OAL
-01	(8.20) .323
-02	(9.60) .377
-03	(13.60) .535
-04	(14.10) .555
-05	(15.10) .594
-06	(17.10) .673
-07	(19.10) .751
-08*	(21.10) .830
-09	(11.60) .456
-10	(15.60) .614
-11	(10.08) .397
-12*	(28.19) 1.110

ROW OPTION	STACKER HEIGHT
-S, -D*, -Q	(3.05) .120 MIN
-T, -5, -6	(4.06) .160 MIN



*-D with stacker height
greater than (4.06 mm) .160"
will not have standoffs.

*Style -08 & -12 = S & D only



Looking for pricing, stock, or lifecycle information?

Click below to explore more details on WIN SOURCE:

-  [View TW-08-12-S-D-720-200 on WIN SOURCE](#)
-  [Samtec Inc. Information](#)

Optimize Your Supply Chain with WIN SOURCE Solutions

-  Global Sourcing Solution
-  Obsolete Management
-  Cost Control Management
-  Shortage Management
-  Alternative Solution
-  Excess Inventory Management