



# THE DATASHEET OF CX2049LNLT



**CX2045LNL**

- Balun Transformer
- 1:2CT Impedance
- 3-300MHz
- Surface Mount

**ELECTRICAL SP**

RETURN LOSS:

FREQUENCY	RETURN LOSS (S)
3 MHz	-23.5 dB MIN
5 MHz	-25 dB MIN
9 MHz	-27 dB MIN
30 MHz	-27 dB MIN
50 MHz	-24.5 dB MIN

INSERTION LOSS:

FREQUENCY	ATTENUATION (S21)
3 MHz	-0.80 dB MAX
5 MHz	-0.80 dB MAX
9 MHz	-0.80 dB MAX
30 MHz	-0.80 dB MAX
50 MHz	-0.80 dB MAX

- NOTES: UNLESS OTHERWISE SPECIFIED
1. OPERATING TEMPERATURE: -40°C TO +85°C
  2. STORAGE TEMPERATURE: -50°C TO +125°C
  3. JEDEC MOISTURE: LEVEL 1.
  4. DIMENSIONS ARE IN INCHES WITH THE FOLLOWING TOLERANCE:  
.XX= ±.01  
.XXX= ±.005
  5. OPTIONAL TAPE & REEL PACKAGING CAN BE ORDERED BY ADDING A "T" SUFFIX TO THE PART NUMBER(EX: CX2045LNLT)
  6. ROHS COMPLIANT



6 0

4 0

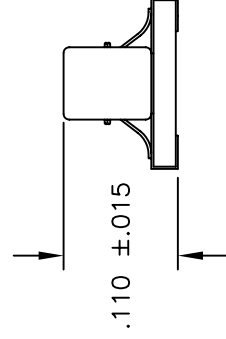
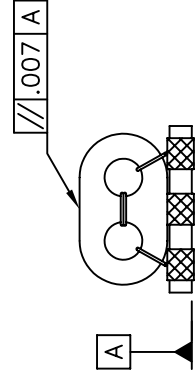
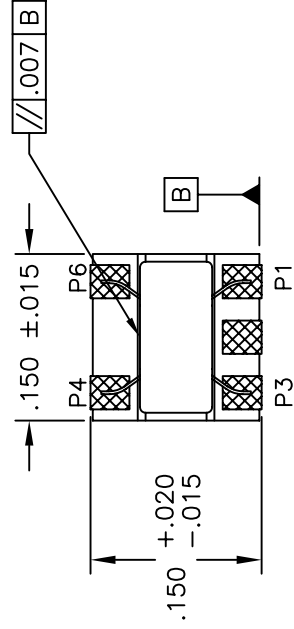
© Copyright, 2014. Pulse Electronics Corp. All rights reserved. Drawing specifications subject to change without notice. (02/14/1

PULSE CONFIDENTIAL  
&  
PROPRIETARY

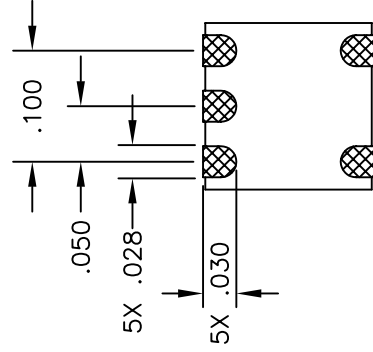
PRODUCT SPECIFICATION:

XFMR, RF, SGL, RAC, 1:2CT, 3-300MHZ

**MECHANICAL SPECIFICATIONS:**



SUGGEST



$5X .030$   
 $.050$

© Copyright, 2014. Pulse Electronics Corp. All rights reserved. Drawing specifications subject to change without notice. (02/14/1



PULSE CONFIDENTIAL  
&  
PROPRIETARY

PRODUCT SPECIFICATION:

XFMR, RF, SGL, RAC, 1:2CT, 3-300MHZ

## Looking for pricing, stock, or lifecycle information?

Click below to explore more details on WIN SOURCE:

-  [View CX2049LNLT on WIN SOURCE](#)
-  [Pulse Information](#)

## Optimize Your Supply Chain with WIN SOURCE Solutions

-  Global Sourcing Solution
-  Obsolete Management
-  Cost Control Management
-  Shortage Management
-  Alternative Solution
-  Excess Inventory Management