



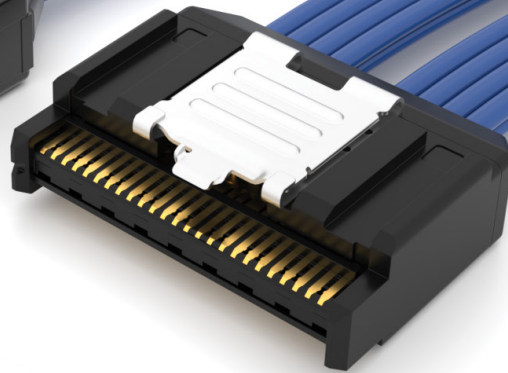
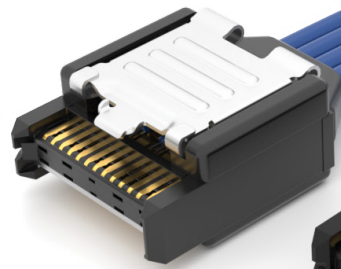
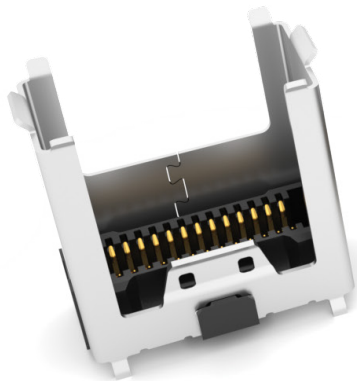
**THE DATASHEET OF
ARC6-16-40.0-LU-LU-3-1**



ACCELERATE[®]

SLIM, DIRECT ATTACH CABLE ASSEMBLIES

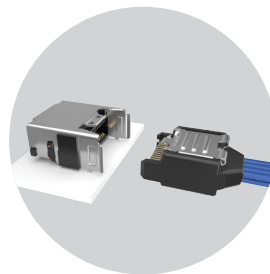
(0.635 mm) .025" PITCH



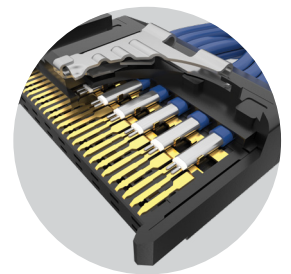
PAM 4
64
G b p s

FEATURES & BENEFITS

- Slimmest cable assembly in the industry - 7.6 mm width
- High-density 2-row design
- 8, 16 and 24 differential pair configurations
- 34 AWG, 100 Ω Eye Speed[®] ultra low skew twinax cable
- Multiple wiring options including reverse polarity
- Mating board level socket (ARF6 Series) features standard rugged weld tabs for increased stability on the PCB
- Rugged metal latching and shielding
- Supports 64 Gbps PAM4 (32 Gbps NRZ) applications
- PCIe[®] 6.0/CXL[™] 3.1 capable
- Utilizes Samtec's Flyover[®] Technology to simplify board layout and extend signal reach



Right-angle available.
Visit [samtec.com?ARF6-RA](https://www.samtec.com?ARF6-RA)
for specifications.



Contacts directly
soldered to the twinax for
improved signal integrity

KEY SPECIFICATIONS (ARC6/ARF6)

PITCH	CABLE	SIGNAL ROUTING	INSULATOR MATERIAL	CONTACT MATERIAL	PLATING	OPERATING TEMP RANGE
(0.635 mm) .025"	34 AWG Eye Speed [®] ultra low skew twinax	100 Ω Differential	Black LCP	Copper Alloy	Au over 50 μ " (1.27 μ m) Ni	-40 °C to +125 °C

PCI-SIG[®], PCI Express[®] and the PCIe[®] design marks are registered trademarks and/or service marks of PCI-SIG.

(0.635 mm) .025" • SLIM CABLE & SOCKET

ARC6	NO OF PAIRS	CABLE LENGTH	END 1	END 2	WIRING OPTION	CABLE TYPE
------	-------------	--------------	-------	-------	---------------	------------

-08
-16
-24

-"XX.X"
= Length in Inches
03.0" (76.2 mm)
minimum

-LU
= Latch Up

-LU
= Latch Up
-LD
= Latch Down

-2
= Pin 1 to Pin 2
(End 2 -LD option only)

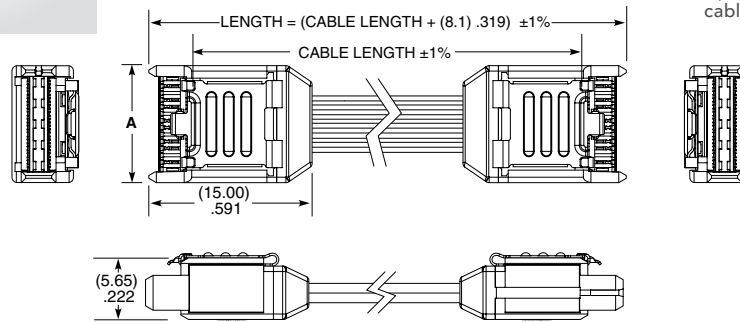
-3
= Pin 1 to Pin N-1
(End 2 -LU option only)

-2R
= Pin 1 to Pin 2
Reversed Polarity
(End 2 -LD option only)
06.0" (152.4 mm) min.
cable length

-3R
= Pin 1 to Pin N-1
Reversed Polarity
(End 2 -LU option only)
06.0" (152.4 mm) min.
cable length

-1
= 34 AWG 100 Ω
Eye Speed®
Ultra low skew
twinax

ARC6
Board Mates:
ARF6



ARC6-08-XX.X-LU-LU-3-X SHOWN

NO. OF PAIRS	A	N	N-1
-08	(10.90) .429	26	25
-16	(18.52) .729	50	49
-24	(26.14) 1.029	74	73

Notes:
Cable lengths longer than 40.00" (1 meter) are not supported with S.I. test data.

View complete specifications at: samtec.com?ARC6

ARF6	NO. OF PAIRS	PLATING	ROW	A	K	"X"R
------	--------------	---------	-----	---	---	------

-08
-16
-24

-S
= 30 μ" (0.76 μm)
Gold on contact area,
Matte Tin on tail

-D
= Double
Row

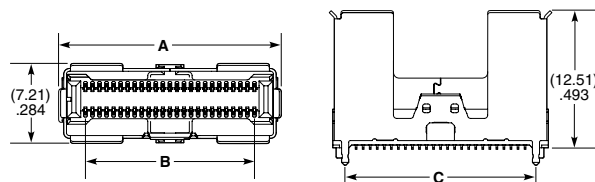
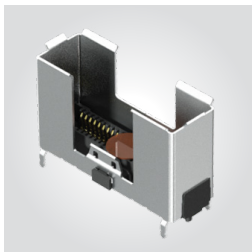
-A
= Alignment
Pin

-K
= Polyimide
film Pick &
Place Pad

-TR
= Tape & Reel

-FR
= Full Reel
Tape & Reel
(must order
maximum quantity
per reel; contact
Samtec for
quantity breaks)

ARF6
Cable Mates:
ARC6



ARF6-16-S-D-A SHOWN

NO. OF PAIRS	A	B	C
-08	(12.46) .491	(7.62) .300	(9.59) .378
-16	(20.08) .791	(15.24) .600	(17.21) .678
-24	(27.70) 1.091	(22.86) .900	(24.83) .978

Notes:
Tape & Reel packaging and K-Dot are standard.

Some sizes, styles and options are non-standard, non-returnable.

View complete specifications at: samtec.com?ARF6

Looking for pricing, stock, or lifecycle information?

Click below to explore more details on WIN SOURCE:

- ⊖ [View ARC6-16-40.0-LU-LU-3-1 on WIN SOURCE](#)
- ⊖ [Samtec Inc. Information](#)

Optimize Your Supply Chain with WIN SOURCE Solutions

- ✓ Global Sourcing Solution
- ✓ Obsolete Management
- ✓ Cost Control Management
- ✓ Shortage Management
- ✓ Alternative Solution
- ✓ Excess Inventory Management