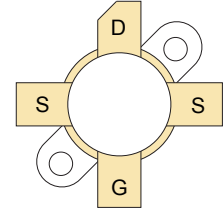



RF POWER VERTICAL MOSFET

The VRF2944 is a gold-metallized silicon n-channel RF power transistor designed for broadband commercial and military applications requiring high power and gain without compromising reliability, ruggedness, or inter-modulation distortion.



FEATURES

- Improved Ruggedness $V_{(BR)DSS} = 170V$
- 400W with 22dB Typ. Gain @ 30MHz, 50V
- Excellent Stability & Low IMD
- Common Source Configuration
- Available in Matched Pairs
- 3:1 Load VSWR Capability at Specified Operating Conditions
- Nitride Passivated
- Refractory Gold Metallization
- Higher Power Version of VRF2933
- Thermally Enhanced Package
- RoHS Compliant 

Maximum Ratings

All Ratings: $T_c = 25^\circ C$ unless otherwise specified

| Symbol | Parameter | VRF2933(MP) | Unit |
|-----------|---|-------------|------|
| V_{DSS} | Drain-Source Voltage | 170 | V |
| I_D | Continuous Drain Current @ $T_c = 25^\circ C$ | 50 | A |
| V_{GS} | Gate-Source Voltage | ± 40 | V |
| P_D | Total Device dissipation @ $T_c = 25^\circ C$ | 795 | W |
| T_{STG} | Storage Temperature Range | -65 to 150 | °C |
| T_J | Operating Junction Temperature Max | 200 | |

Static Electrical Characteristics

| Symbol | Parameter | Min | Typ | Max | Unit |
|---------------|--|-----|-----|-----|---------|
| $V_{(BR)DSS}$ | Drain-Source Breakdown Voltage ($V_{GS} = 0V, I_D = 100mA$) | 170 | 180 | | V |
| $V_{DS(ON)}$ | On State Drain Voltage ($I_{D(ON)} = 25A, V_{GS} = 10V$) | | 1.7 | 2.1 | |
| I_{DSS} | Zero Gate Voltage Drain Current ($V_{DS} = 100V, V_{GS} = 0V$) | | | 2.0 | mA |
| I_{GSS} | Gate-Source Leakage Current ($V_{DS} = \pm 20V, V_{GS} = 0V$) | | | 2.0 | μA |
| g_{fs} | Forward Transconductance ($V_{DS} = 10V, I_D = 20A$) | 10 | | | mhos |
| $V_{GS(TH)}$ | Gate Threshold Voltage ($V_{DS} = 10V, I_D = 100mA$) | 2.9 | 3.6 | 4.4 | V |

Thermal Characteristics

| Symbol | Characteristic | Min | Typ | Max | Unit |
|-----------------|-------------------------------------|-----|-----|------|------|
| $R_{\theta JC}$ | Junction to Case Thermal Resistance | | | 0.22 | °C/W |

 **CAUTION:** These Devices are Sensitive to Electrostatic Discharge. Proper Handling Procedures Should Be Followed.

Dynamic Characteristics

VRF2944(MP)

| Symbol | Parameter | Test Conditions | Min | Typ | Max | Unit |
|-----------|------------------------------|-----------------|-----|------|-----|------|
| C_{iss} | Input Capacitance | $V_{GS} = 0V$ | | 1050 | | pF |
| C_{oss} | Output Capacitance | $V_{DS} = 50V$ | | 520 | | |
| C_{rss} | Reverse Transfer Capacitance | $f = 1MHz$ | | 62 | | |

Functional Characteristics

| Symbol | Parameter | Min | Typ | Max | Unit |
|----------|---|--------------------------------|-----|-----|------|
| G_{PS} | $f_1 = 30MHz, V_{DD} = 50V, I_{DQ} = 250mA, P_{out} = 400W$ | 23 | 25 | | dB |
| η_D | $f_1 = 30MHz, V_{DD} = 50V, I_{DQ} = 250mA, P_{out} = 400W$ | | 50 | | % |
| Ψ | $f_1 = 30MHz, V_{DD} = 50V, I_{DQ} = 250mA, P_{out} = 400W$ 3:1 VSWR - All Phase Angles | No Degradation in Output Power | | | |

1. To MIL-STD-1311 Version A, test method 2204B, Two Tone, Reference Each Tone

Microsemi reserves the right to change, without notice, the specifications and information contained herein.

Typical Performance Curves

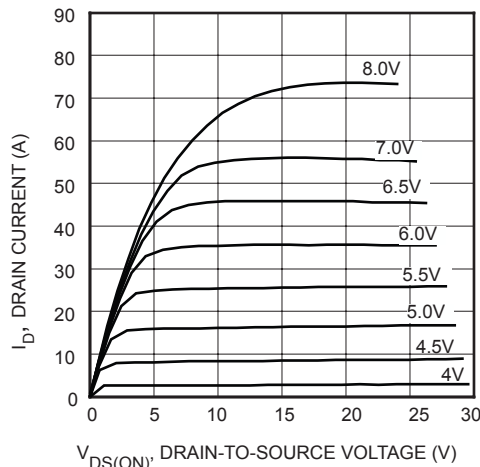


FIGURE 1, Output Characteristics

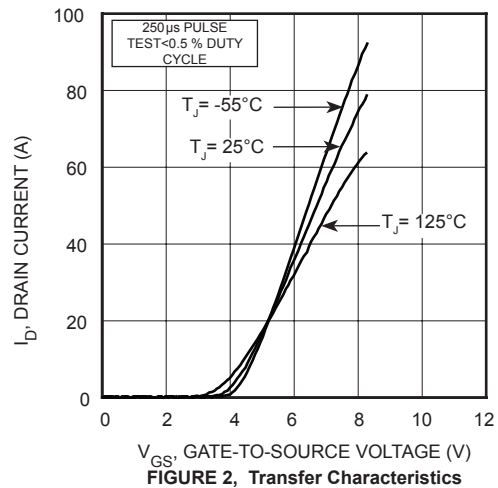


FIGURE 2, Transfer Characteristics

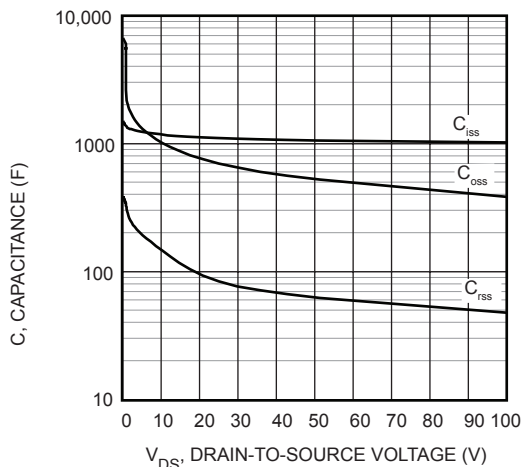


FIGURE 3, Capacitance vs Drain-to-Source Voltage

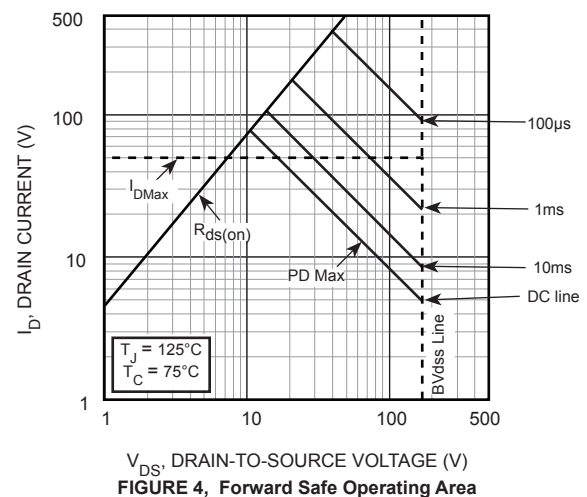


FIGURE 4, Forward Safe Operating Area

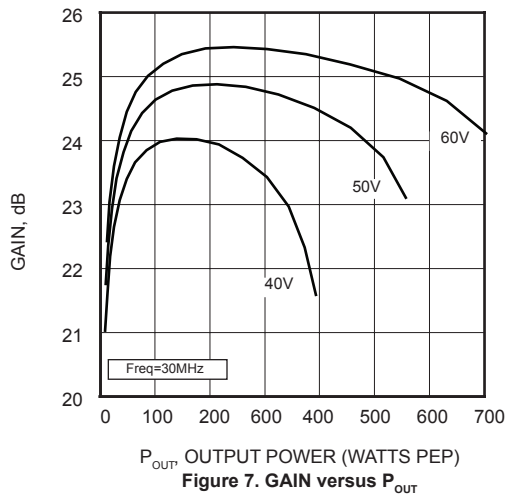
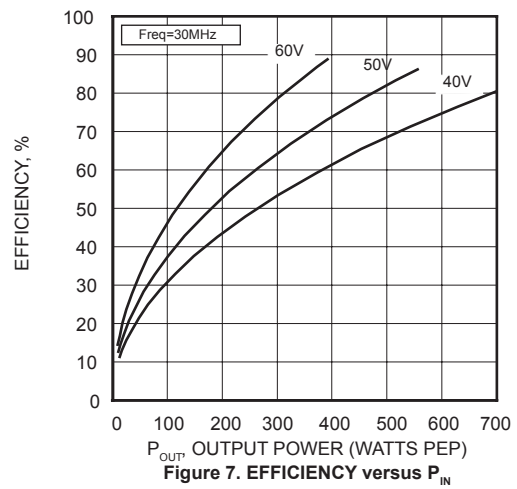
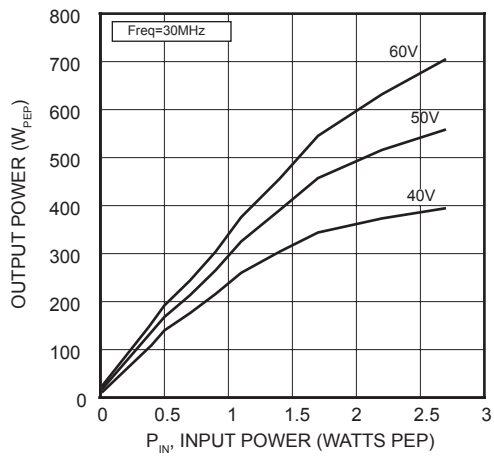
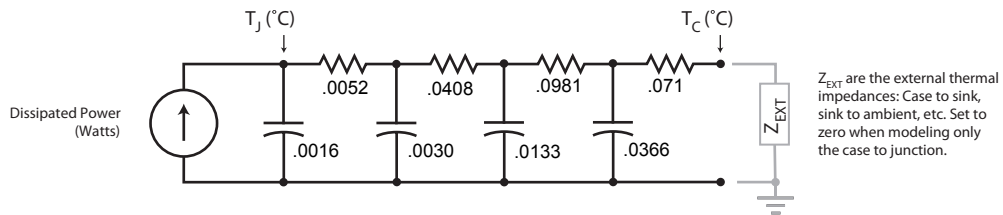
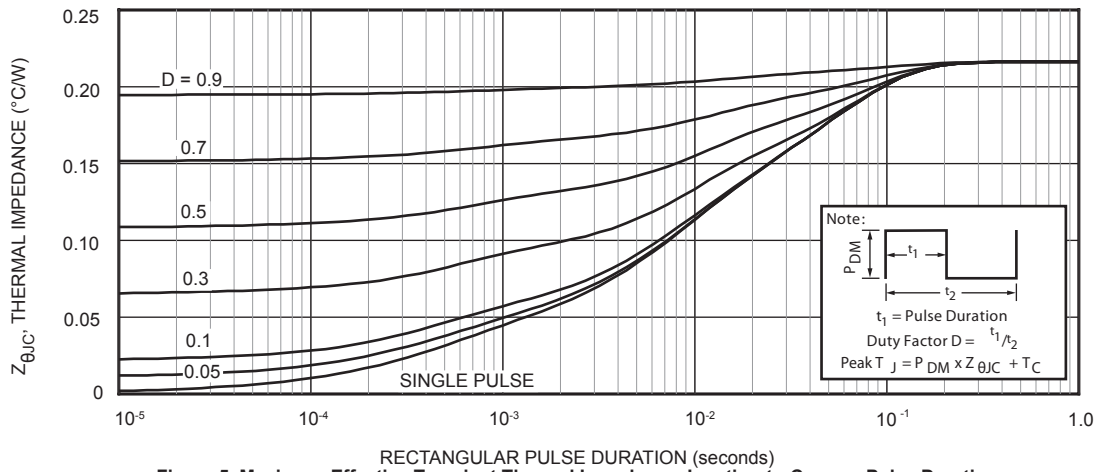
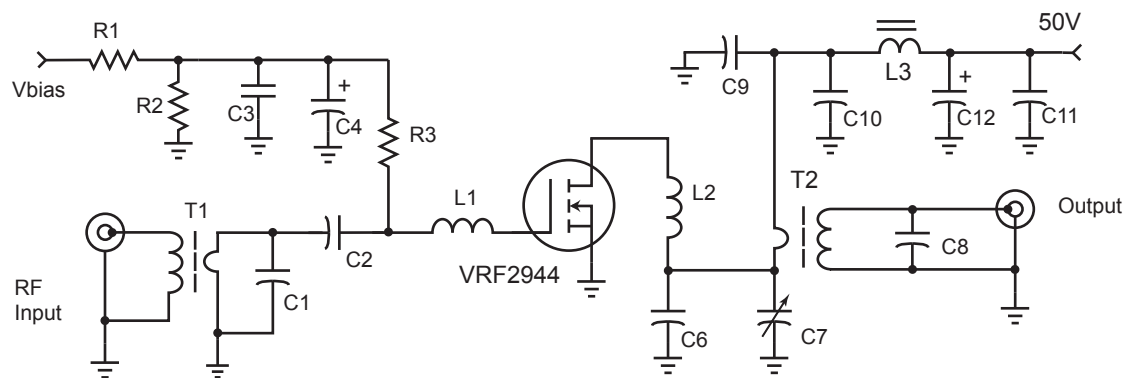


Table 1 - Typical Class AB Large Signal Input - Output Impedance

| Freq. (MHz) | Z_{in} | Z_{out} |
|-------------|---------------|-----------------|
| 30 | $4.5 - j 2.5$ | $2.15 - j 2.71$ |

$I_{dq} = 100\text{mA}$ Z_{ol} - Conjugate of optimum load for 400 Watts output at $V_{dd}=150\text{V}$

30 MHz Test Circuit



C1 1200pF ATC100B ceramic
 C2, C3 0.1uF 100V 1206 SMT
 C9-C11 .047uF NPO 100V 1218 SMT
 C6 180 pF metal clad mica
 C7 ARCO 465 mica trimmer
 C8 100 pF ATC 100E ceramic
 C4, C12 10uF 100V Electrolytic
 L1 25 nH - 2t #18 0.2"d .2"l

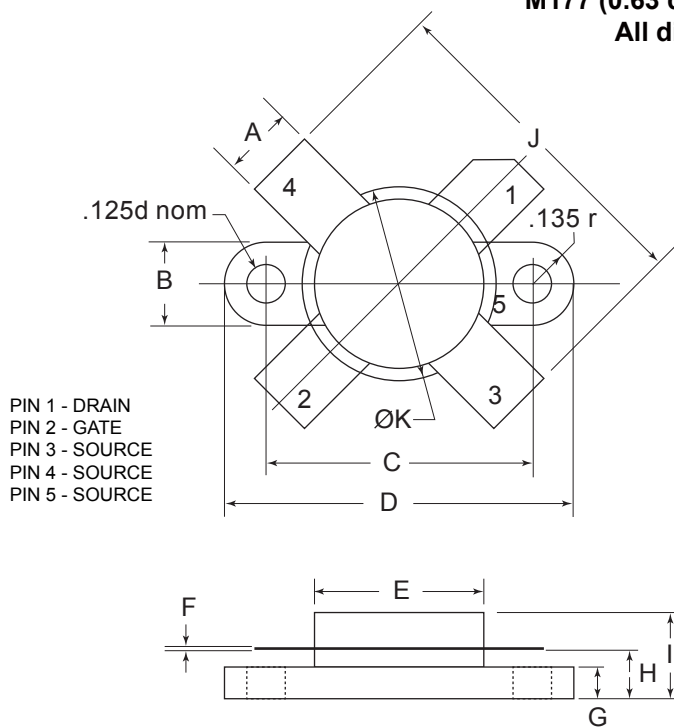
L2 26 nH - 1.5t #12 0.31"d2
 L3 2t #16 on 2x 267300081 .5" bead
 R1-R2 1k Ω 1/4W
 R3 100 Ω 1W
 T1 16:1 transformer 4t #24 teflon on
 RF Parts Co. T1/2 transformer core
 T2 9:1 transformer 3t 2-ply #16 teflon on
 RF Parts Co. T1 transformer core

Adding MP at the end of P/N specifies a matched pair where $V_{GS(TH)}$ is matched between the two parts. V_{TH} values are marked on the devices per the following table.

| Code | Vth Range | Code 2 | Vth Range |
|------|---------------|--------|---------------|
| A | 2.900 - 2.975 | M | 3.650 - 3.725 |
| B | 2.975 - 3.050 | N | 3.725 - 3.800 |
| C | 3.050 - 3.125 | P | 3.800 - 3.875 |
| D | 3.125 - 3.200 | R | 3.875 - 3.950 |
| E | 3.200 - 3.275 | S | 3.950 - 4.025 |
| F | 3.275 - 3.350 | T | 4.025 - 4.100 |
| G | 3.350 - 3.425 | W | 4.100 - 4.175 |
| H | 3.425 - 3.500 | X | 4.175 - 4.250 |
| J | 3.500 - 3.575 | Y | 4.250 - 4.325 |
| K | 3.575 - 3.650 | Z | 4.325 - 4.400 |

V_{TH} values are based on Microsemi measurements at datasheet conditions with an accuracy of 1.0%.

M177 (0.63 dia. SOE) Mechanical Data
All dimensions are ± 0.005



| DIM | MIN | TYP | MAX |
|-----|-------|-------|-------|
| A | 0.225 | 0.230 | 0.235 |
| B | 0.265 | 0.270 | 0.275 |
| C | 0.860 | 0.865 | 0.870 |
| D | 1.130 | 1.135 | 1.140 |
| E | 0.545 | 0.550 | 0.555 |
| F | 0.003 | 0.005 | 0.007 |
| G | 0.098 | 0.103 | 0.108 |
| H | 0.150 | 0.160 | 0.170 |
| I | | | 0.280 |
| J | 1.080 | 1.100 | 1.120 |
| K | 0.625 | 0.630 | 0.635 |

HAZARDOUS MATERIAL WARNING: The ceramic portion of the device below the lead plane is beryllium oxide. Beryllium oxide dust is highly toxic when inhaled. Care must be taken during handling and mounting to avoid damage to this area. These devices must never be thrown away with general industrial or domestic waste. BeO substrate weight: 0.703g. Percentage of total module weight which is BeO: 9%.



Disclaimer:

The information contained in the document (unless it is publicly available on the Web without access restrictions) is PROPRIETARY AND CONFIDENTIAL information of Microsemi and cannot be copied, published, uploaded, posted, transmitted, distributed or disclosed or used without the express duly signed written consent of Microsemi. If the recipient of this document has entered into a disclosure agreement with Microsemi, then the terms of such Agreement will also apply. This document and the information contained herein may not be modified, by any person other than authorized personnel of Microsemi. No license under any patent, copyright, trade secret or other intellectual property right is granted to or conferred upon you by disclosure or delivery of the information, either expressly, by implication, inducement, estoppels or otherwise. Any license under such intellectual property rights must be approved by Microsemi in writing signed by an officer of Microsemi.

Microsemi reserves the right to change the configuration, functionality and performance of its products at anytime without any notice. This product has been subject to limited testing and should not be used in conjunction with life-support or other mission-critical equipment or applications. Microsemi assumes no liability whatsoever, and Microsemi disclaims any express or implied warranty, relating to sale and/or use of Microsemi products including liability or warranties relating to fitness for a particular purpose, merchantability, or infringement of any patent, copyright or other intellectual property right. Any performance specifications believed to be reliable but are not verified and customer or user must conduct and complete all performance and other testing of this product as well as any user or customers final application. User or customer shall not rely on any data and performance specifications or parameters provided by Microsemi. It is the customer's and user's responsibility to independently determine suitability of any Microsemi product and to test and verify the same. The information contained herein is provided "AS IS, WHERE IS" and with all faults, and the entire risk associated with such information is entirely with the User. Microsemi specifically disclaims any liability of any kind including for consequential, incidental and punitive damages as well as lost profit. The product is subject to other terms and conditions which can be located on the web at <http://www.microsemi.com/legal/tnc.asp>

Looking for pricing, stock, or lifecycle information?

Click below to explore more details on WIN SOURCE:

-  [View VRF2944 on WIN SOURCE](#)
-  [Microchip Technology](#) Information

Optimize Your Supply Chain with WIN SOURCE Solutions

-  Global Sourcing Solution
-  Obsolete Management
-  Cost Control Management
-  Shortage Management
-  Alternative Solution
-  Excess Inventory Management