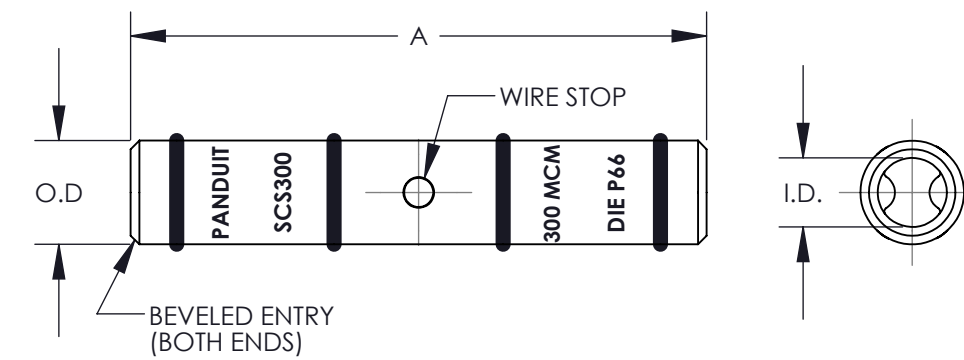




**THE DATASHEET OF  
SCS800-6**

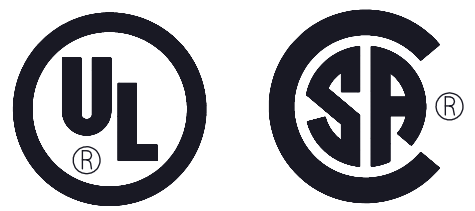


PANDUIT PART NUMBER	COPPER CONDUCTOR SIZE	EXPANDED WIRE RANGE***	BARREL		OVERALL LENGTH "A" +/- .12	WIRE STRIP LENGTH	PLATING	PANDUIT COLOR CODE ON BARREL	PANDUIT DIE INDEX NUMBER ON BARREL	ALTERNATE INDUSTRY DIE INDEX NUMBER ON BARREL
			I.D. +/- .01	O.D. +/- .01						
SCS300-X	300 kcmil	#2/0 - 300 kcmil	0.65	0.81	2.25	1-1/16	ELECTRO-TIN	WHITE	P66	(17)
SCS300UT-X							N/A	N/A	N/A	N/A
SCS350-X	350 kcmil	#3/0 - 350 kcmil	0.70	0.87	2.37	1-1/8	ELECTRO-TIN	RED	P71	(18)
SCS350UT-X							N/A	N/A	N/A	N/A
SCS400-6	400 kcmil	#4/0 - 400 kcmil	0.76	0.95	2.50	1-3/16	ELECTRO-TIN	BLUE	P76	(19)
SCS400UT-6							N/A	N/A	N/A	N/A
SCS500-6	500 kcmil	#4/0 - 500 kcmil	0.83	1.05	2.87	1-3/8	ELECTRO-TIN	BROWN	P87	(20)
SCS500UT-6							N/A	N/A	N/A	N/A
SCS600-6	600 kcmil	250 - 600 kcmil	0.92	1.18	2.87	1-3/8	ELECTRO-TIN	GREEN	P94	(22)
SCS600UT-6							N/A	N/A	N/A	N/A
SCS750-6	750 kcmil	500 - 750 kcmil	1.03	1.29	3.37	1-5/8	ELECTRO-TIN	BLACK	P106	(24)
SCS750UT-6							N/A	N/A	N/A	N/A
SCS800-6	800 kcmil	----	1.05	1.35	3.37	1-7/8	ELECTRO-TIN	ORANGE	P107	(25)
SCS1000-3	1000 kcmil	----	1.17	1.50	3.87	1-7/8	ELECTRO-TIN	WHITE	P125	(27)
SCS1000UT-3							N/A	N/A	N/A	N/A



NOTES:

- MATERIAL: HIGH CONDUCTIVITY SEAMLESS COPPER TUBING
- UL LISTED WITH CODE COPPER CONDUCTORS FOR APPLICATIONS UP TO 35KV, FILE E52164  
**NOTE: SCS800-6 IS NOT UL LISTED**
- CONSULT CABLE MANUFACTURER FOR VOLTAGE STREE RELIEF INSTRUCTIONS WITH APPLICATIONS GREATER THAN 2000 VOLTS
- CSA CERTIFIED WITH COPPER CODE CONDUCTORS FOR APPLICATIONS UP TO 35 KV FILE LR31212.  
**NOTE: SCS800-6 IS NOT CSA CERTIFIED**
- FOR USE WITH COPPER STRANDED CLASS B COMPACT, COMPRESSED, OR CONCENTRIC, CLASS C CONCENTRIC WIRE ONLY.



					TITLE SCS STANDARD BARREL 300 kcmil - 1000 kcmil COPPER SPLICES CUSTOMER DRAWING	
					ITEM REVISION NAME N41135BB/09	<b>PANDUIT</b>
					DATASET FILE NAME C41135/09.SLDDRW	
					UNLESS OTHERWISE SPECIFIED, DIMENSIONAL TOLERANCES ARE: IN [mm] .X ± .XXX ± .XX ± ANGLES ±	MATERIAL SEE NOTES
09	7/18	JHNU	JHNU	RGB	REVISED UP PART SUFFIX TO UT REVISED NOTES TO SPECIFY SCS800-6 IS NOT UL LISTED/CSA CERTIFIED REVISED TITLE BLOCK	DRAWING NUMBER C41135
REV	DATE	BY	CHK	APR	DESCRIPTION	ECN
					THIRD ANGLE PROJECTION	DRAWN BY PWS
					DATE 3/93	CHK GRM
					SCALE N/A	SHEET 1 OF 1
						SIZE B

## Looking for pricing, stock, or lifecycle information?

Click below to explore more details on WIN SOURCE:

 [View SCS800-6 on WIN SOURCE](#)

 [Panduit Corp](#) Information

## Optimize Your Supply Chain with WIN SOURCE Solutions

-  Global Sourcing Solution
-  Obsolete Management
-  Cost Control Management
-  Shortage Management
-  Alternative Solution
-  Excess Inventory Management