



THE DATASHEET OF
913-008-001



STACKABLE PANEL MOUNT FUSE HOLDER

with Wire Leads for ATO® Style Blade Fuse



Description

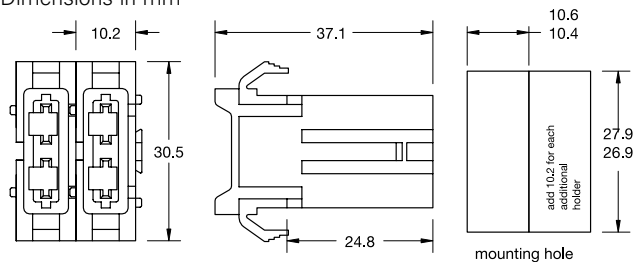
Intended for use with 32V ATO®/ FKS Fuses rated up to 20A or 30A.

Ordering Information

Part Number	Package Size
01550xxxLXN	50
01550xxxZ	100

Dimensions

Dimensions in mm



Ratings

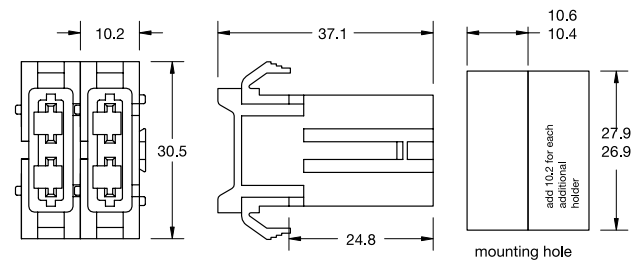
Part Number	Description	Fuse Rating
01550300_	14AWG/2.1mm ² stranded black wire	20 A
01550400_	10AWG/5.3mm ² stranded orange wire	30 A

ATO® PANEL MOUNT HOLDER COMPONENTS



Dimensions

Dimensions in mm



Ratings

Part Number	Description	Fuse Rating
868-062-000	Housing only, color black - 2700 pcs.	-
913-008	Reeled Terminals A, wire 14AWG/2.1mm ² -2000 pcs.	20A
913-008-001	Singe Terminals A, wire 14AWG/2.1mm ² -1000 pcs.	20A
913-007	Reeled Terminals B, wire 10AWG/5.3mm ² - 2000 pcs.	30A
913-007-001	Singe Terminals B, wire 10AWG/5.3mm ² -1000 pcs.	30A

Looking for pricing, stock, or lifecycle information?

Click below to explore more details on WIN SOURCE:

 [View 913-008-001 on WIN SOURCE](#)

 [Littelfuse Inc. Information](#)

Optimize Your Supply Chain with WIN SOURCE Solutions

-  Global Sourcing Solution
-  Obsolete Management
-  Cost Control Management
-  Shortage Management
-  Alternative Solution
-  Excess Inventory Management