

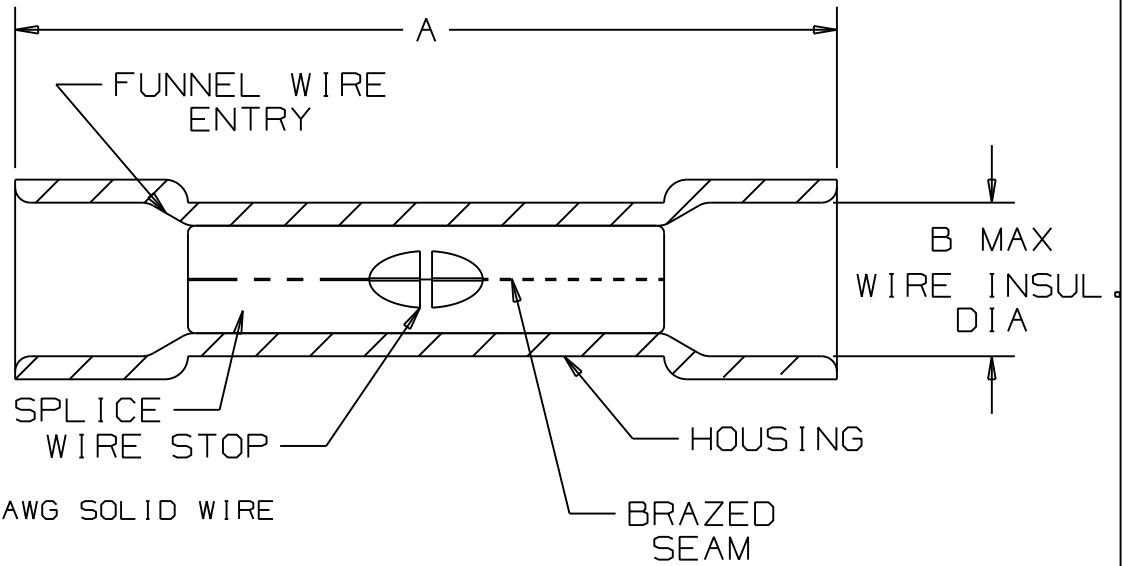


THE DATASHEET OF BSV14X-L



THIS COPY IS PROVIDED ON A RESTRICTED BASIS AND IS NOT TO BE USED IN ANY WAY DETRIMENTAL TO THE INTERESTS OF PANDUIT CORP.

PANDUIT PART NUMBER		WIRE RANGE	COLOR CODE	DIMENSIONS in.	
PREFIX	PK.			A ±.03	B
BSV18X	-C	22-18	RED	1.03	.170
	-M			(26,16)	(4,32)
	-MY			*	
BSV14X	-C	16-14	BLUE	1.04	.200
	-M			(26,42)	(5,08)
BSV10X	-L	12-10	YELLOW	1.18	.250
	-D			(29,97)	(6,35)



NOTES :

- UL LISTED AND CSA CERTIFIED FOR :
 - 600 V MAX. VOLTAGE RATING
 - 221°F (105°C) MAX. TEMP. RATING
 - SOLID OR STRANDED, COPPER WIRE
 - BSV10X 300V MAX VOLTAGE RATING WITH 10AWG SOLID WIRE
- MATERIAL :
 - STAMPING (22-18 & 16-14) - .03" THK COPPER, TIN PLATED
 - STAMPING (12-10) - .04" THK COPPER, TIN PLATED
 - HOUSING - VINYL
- DIMENSIONS IN BRACKETS ARE IN MILLIMETERS
- INSTALLATION TOOLS : CT-100, CT-500, CT-550, CT-1550, CT-1551 (CT-500 NOT USED WITH BSV10X, 300V WITH BSV10X & CT-100)
- * 22-16 AWG WIRE RANGE WITH CT-500, CT-550, CT-1550, CT-1551 TOOLS
 ** 18-14 AWG WIRE RANGE WITH CT-500, CT-550, CT-1550, CT-1551 TOOLS
 *** 12-10 AWG STRANDED AND 12 AWG SOLID COPPER WIRE WITH CT-1550 AND CT-1551 TOOL
- WIRE STRIP LENGTH: 5/16 +1/32_{.0} (7,9 +.8_{.0})
- PACKAGE QTY: STD. PKG. -L=50 BULK PKG. -D=500
 -C=100 -M=1000 -MY=1000



LISTED
587H
E52164

CERTIFIED
LR31212

REV	DATE	BY	CHK	DESCRIPTION	ECN #	CUST	PM
08	08/10	SRB		Added note 1. D. BSV10X 300 max voltage rating			
07	5/05	JHNU		ADDED PACKAGING CODE "MY" TO DRAWING.	08760	JAC	CCH
06	10/00	EJS	SKB	DIMENSION B IN PART BSV18X WAS .183, BSV14X WAS .211, BSV10X WAS .260	07265	JCJ	TRO

PANDUIT CORP.

TINLEY PARK, ILLINOIS

EXPANDED VINYL INSULATED BUTT SPLICES

DRAWN BY FES	CHK'D	SCALE NONE	DRAWING NO. A41181
-----------------	-------	---------------	-----------------------

Looking for pricing, stock, or lifecycle information?

Click below to explore more details on WIN SOURCE:

 [View BSV14X-L on WIN SOURCE](#)

 [Panduit Corp](#) Information

Optimize Your Supply Chain with WIN SOURCE Solutions

-  Global Sourcing Solution
-  Obsolete Management
-  Cost Control Management
-  Shortage Management
-  Alternative Solution
-  Excess Inventory Management