

NOTES:
 1. MIN. PUSHOUT FORCE: .5 lb.
 2. PLANARITY TO BE WITHIN .006 [.15].
 3. Ⓢ REPRESENTS A CRITICAL DIMENSION FOR STATISTICAL PROCESS CONTROL.

UNLESS OTHERWISE NOTED TOLERANCES ARE:
 DIMENSIONS ARE IN INCHES
 ONE PLACE DECIMALS ± .1 THREE PLACE DECIMALS ± .005
 TWO PLACE DECIMALS ± .01 FOUR PLACE DECIMALS ± .0020
 ANGLES ± 2°

TITLE: STAMPED & FORMED DIP ASM.
 DWG NO: ICF-XXX-XXX-X-XX
 SHEET 1 OF 1

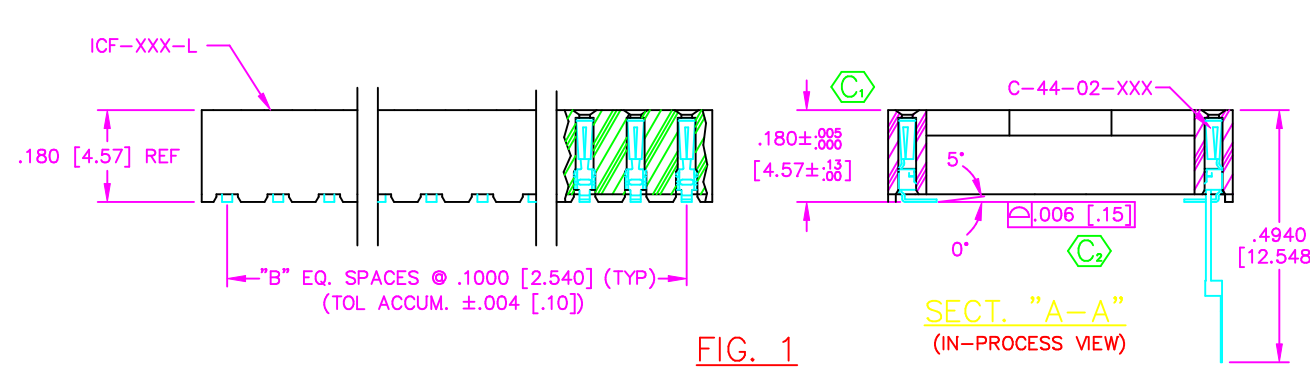
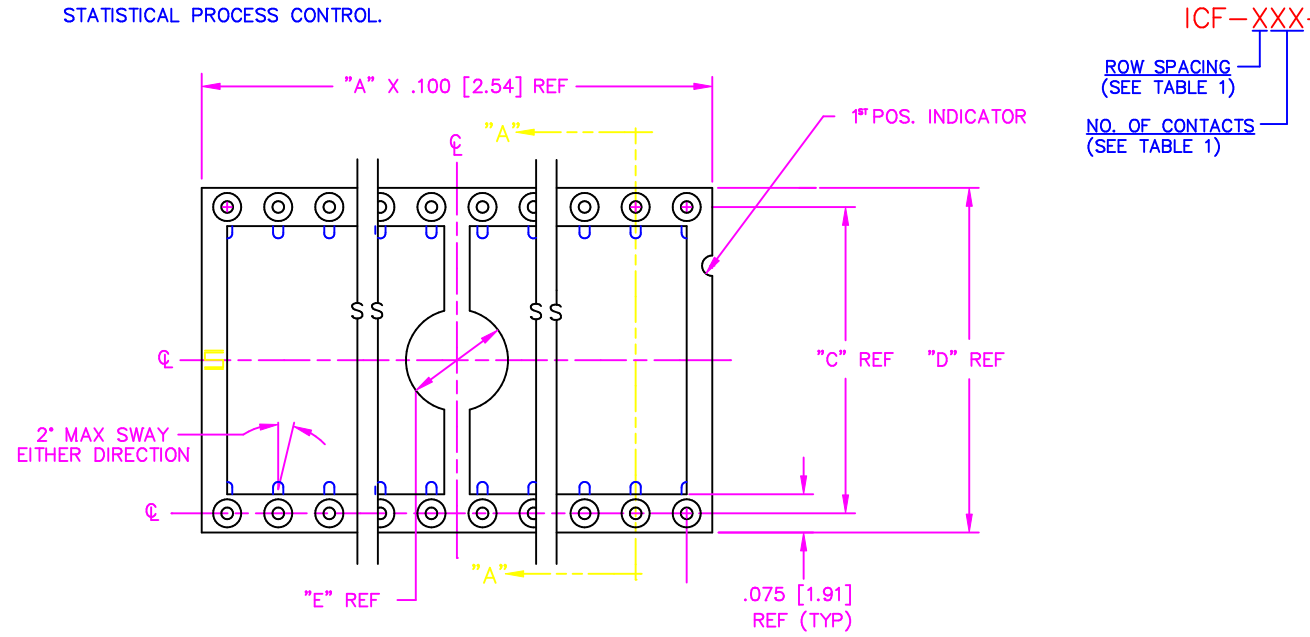


FIG. 1

SECT. "A-A" (IN-PROCESS VIEW)

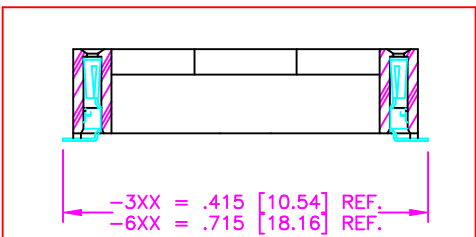


FIG. 2
 LEAD STYLE 0
 SAME AS FIG 1 EXCEPT AS SHOWN

TABLE 1

"X"	"XX"	"A"	"B"	"C"	"D"	"E"
3	08	4	3	.3000 [7.620]	.375 [9.53]	.200 [5.08]
	14	7	6			
	16	8	7			
	18	9	8			
	20	10	9			
	22	11	10			
6	24	12	11	.6000 [15.240]	.675 [17.15]	.400 [10.16]
	28	14	13			
	32	16	15			
	40	20	19			
	48	24	23			

- ICF-XXX-XXX-X-XX
- ROW SPACING (SEE TABLE 1)
 - NO. OF CONTACTS (SEE TABLE 1)
 - PACKAGING OPTION
 - TR: TAPE & REEL (FIG 5)
 - LEAVE BLANK FOR TUBE (FIG 4)
 - LEAD STYLES
 - I: TAILS IN - SEE FIG. 1
 - O: TAILS OUT - SEE FIG. 2
 - PLATING SPECIFICATION
 - S: SELECTIVE (USE C-44-02-S)
 - T: TIN (USE C-44-02-T)
 - F: FLASH SELECTIVE GOLD (USE C-44-02-F)
 - TL: TIN/LEAD (USE C-44-02-TL)
 - STL: SELECTIVE TIN/LEAD (USE C-44-02-STL)
 - TM: MATTE TIN (USE C-44-02-T)
 - FM: FLASH GOLD SELECTIVE, MATTE TIN TAIL (USE C-44-02-F)
 - SM: HEAVY GOLD SELECTIVE, MATTE TIN TAIL (USE C-44-02-S)

PACKAGE PARTS IN TUBE AS SHOWN (FIG 4)

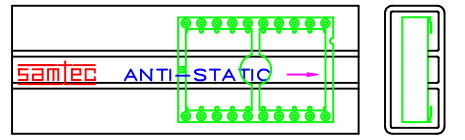
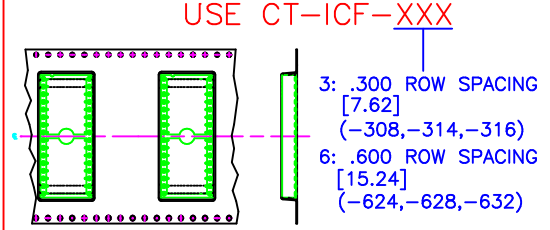


TABLE 2

SERIES	LEAD STYLE	PACKAGING TUBE	PLUG
.300 [7.62]	I	PT-1-24-01-25	TP-03
.600 [15.24]	I	PT-1-24-02-25	TP-03
.300 [7.62]	0	PT-1-24-03-25	TP-03
.600 [15.24]	0	PT-1-24-04-25	TP-03

PACKAGE PARTS IN TAPE & REEL AS SHOWN (FIG 5)





SURFACE MOUNT LEADS TO BE FACE DOWN IN THE POCKET

PLOT SCALE: 1=2
 samtec
 520 PARK EAST BLVD. NEW ALBANY, INDIANA 47150
 PHONE (812) 944-6733 P.O. BOX 1147
 CODE 55322

PROPRIETARY NOTE
 THIS DOCUMENT CONTAINS INFORMATION CONFIDENTIAL AND PROPRIETARY TO SAMTEC INC. AND SHALL NOT BE REPRODUCED OR TRANSMITTED IN ANY FORM OR BY ANY MEANS, ELECTRONIC OR MECHANICAL, INCLUDING PHOTOCOPYING, RECORDING, OR BY ANY INFORMATION STORAGE AND RETRIEVAL SYSTEM, WITHOUT THE EXPRESS WRITTEN CONSENT OF SAMTEC INC.

Looking for pricing, stock, or lifecycle information?

Click below to explore more details on WIN SOURCE:

-  [View ICF-308-T-O-TR on WIN SOURCE](#)
-  [Samtec Inc. Information](#)

Optimize Your Supply Chain with WIN SOURCE Solutions

-  Global Sourcing Solution
-  Obsolete Management
-  Cost Control Management
-  Shortage Management
-  Alternative Solution
-  Excess Inventory Management