



**THE DATASHEET OF
AM1669B997-C**





ANATECH ELECTRONICS INC
RF & Microwave Filters & Products

1669 MHz Ceramic Bandpass Filter

Part Number: AM1669B997



Electrical specifications

Center Frequency: 1669 MHz
Bandwidth: +/- 30 MHz
VSWR: 2.0 max
Input / Output Impedance: 50 Ohms
Passband: 1654-1684 MHz
Passband Insertion Loss: 1.6 dB max
Passband Ripple: 0.5 dB max
Rejection: 28 dB min at 1469 MHz
Rejection 2: 16 dB min at 1869 MHz
Power Handling: 1 W

Mechanical

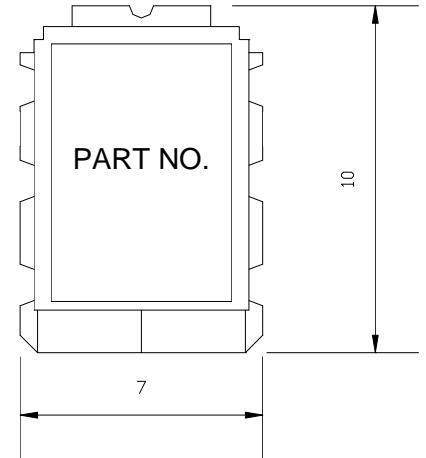
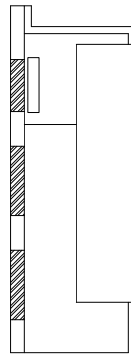
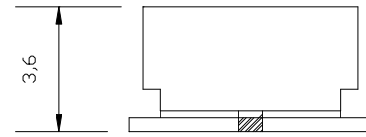
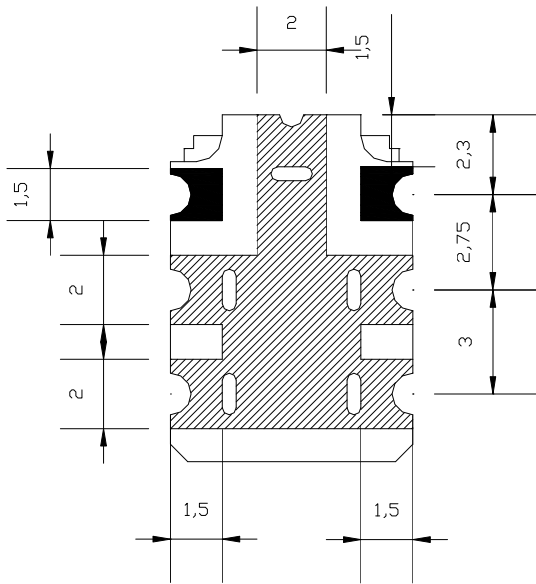
Mounting Method: SMT
Dimensions: 10 x 7 x 3.6 mm

Environmental

Operating Temperature: -30°C to +70°C
Storage Temperature: -50°C to +90°C

This product is RoHs compliant.

Outline Drawing:

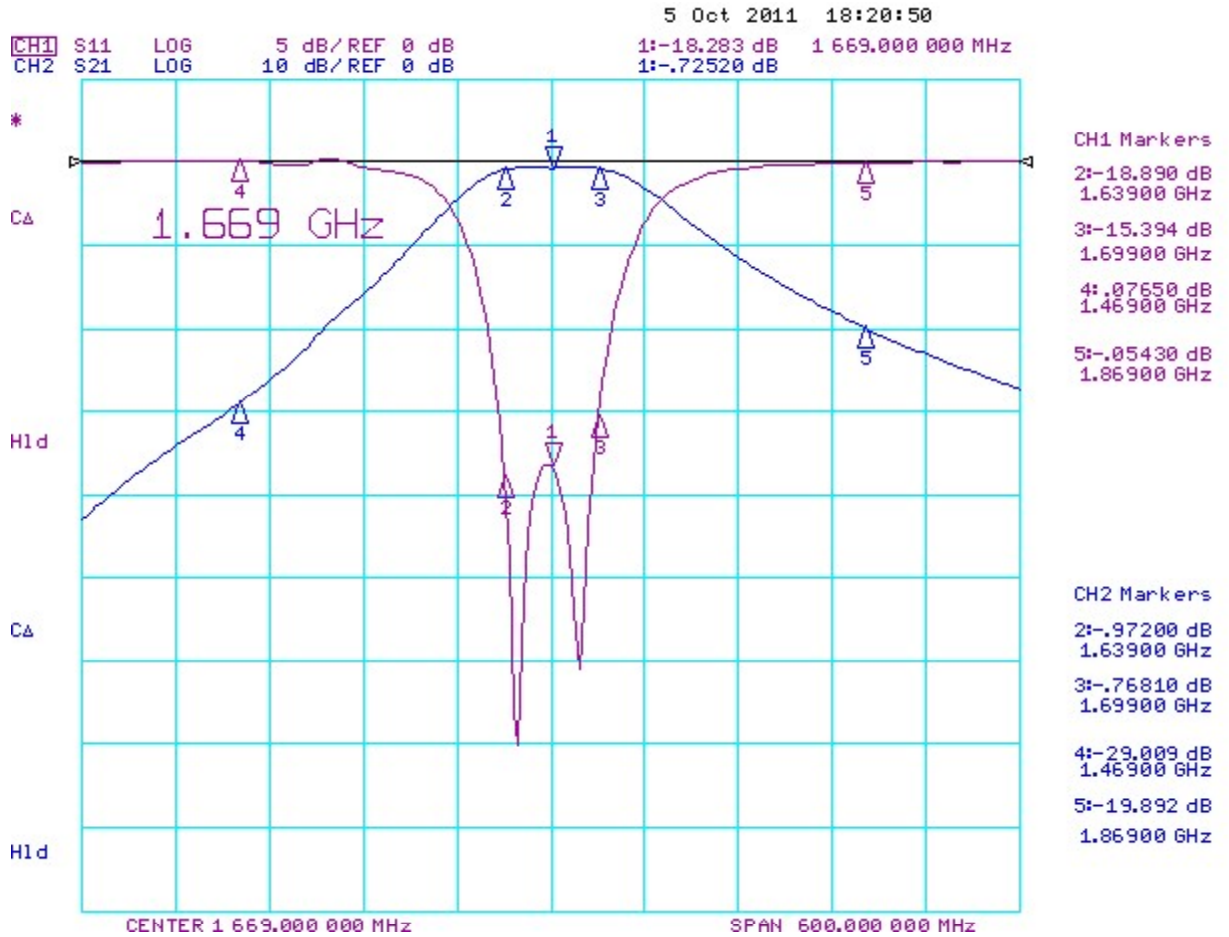


 I/O PORT
 GROUND

TOLERANCES : +/- 0.3
 UNIT : mm



Response Plots:





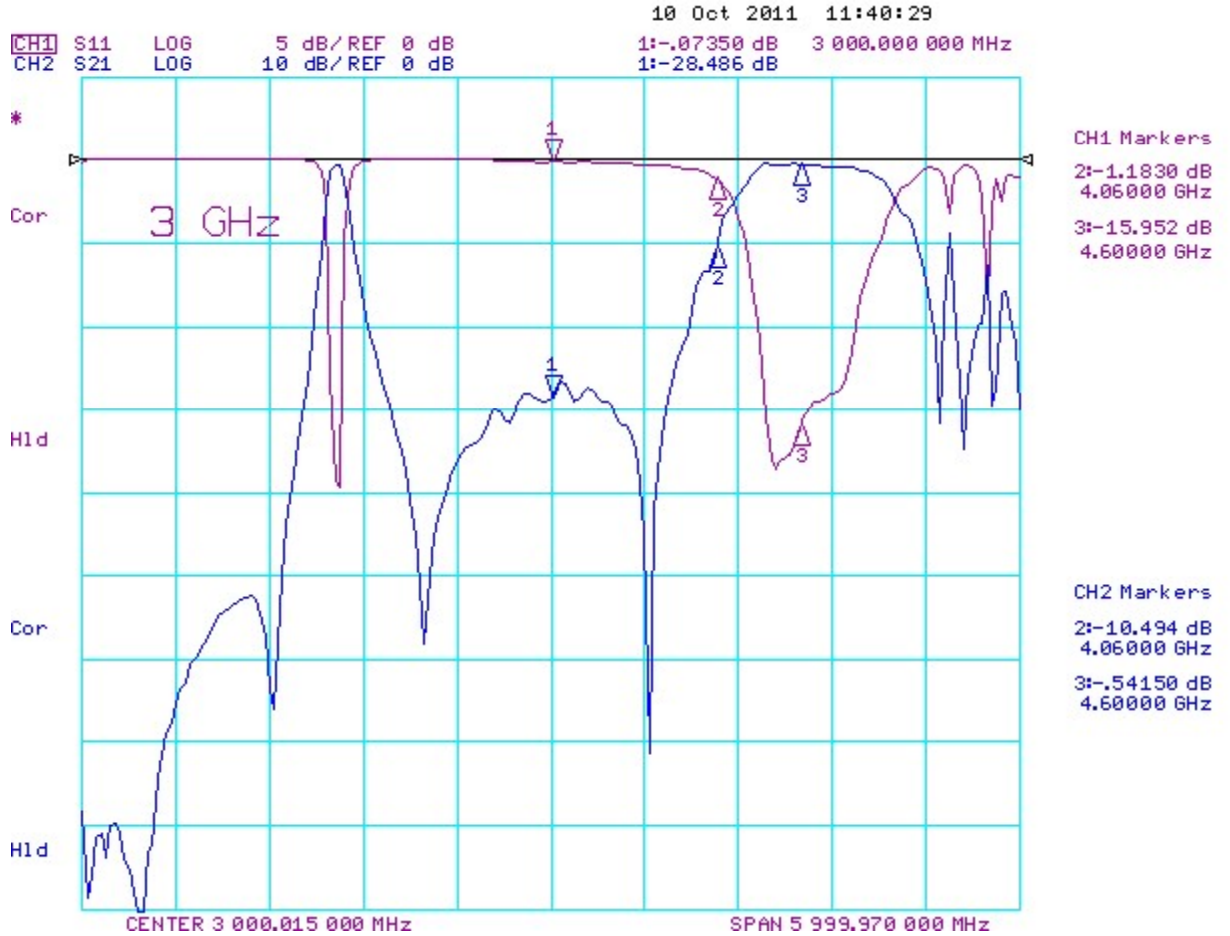
ANATECH ELECTRONICS INC
RF & Microwave Filters & Products

1669 MHz Ceramic Bandpass Filter

Part Number: AM1669B997

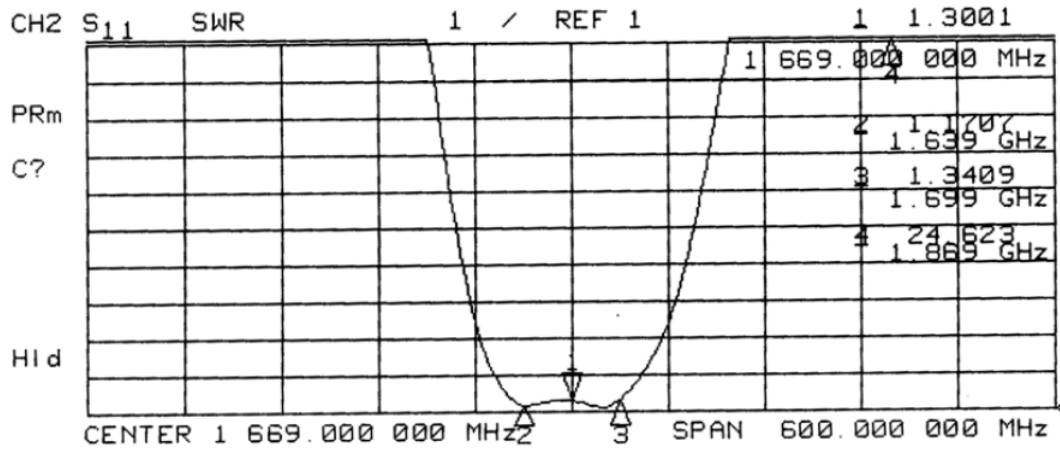
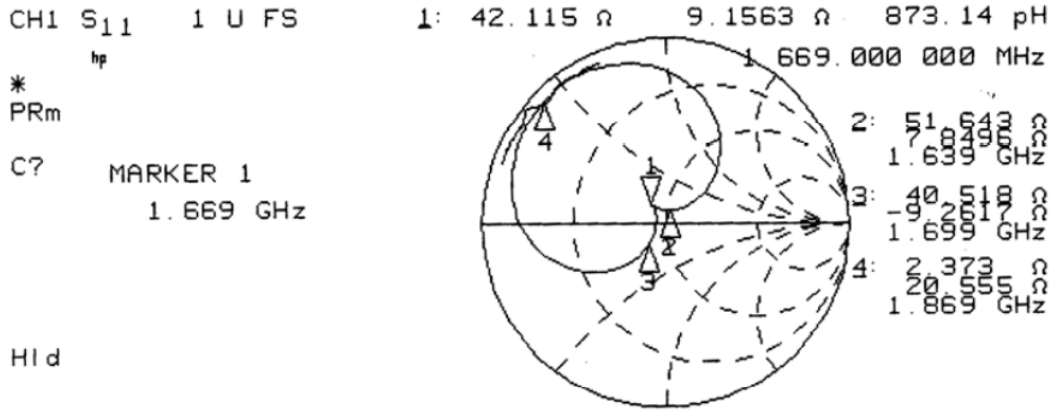


Response Plots:





Smith Chart:



Looking for pricing, stock, or lifecycle information?

Click below to explore more details on WIN SOURCE:

- ⊖ [View AM1669B997-C on WIN SOURCE](#)
- ⊖ [Anatech Electronics Inc. Information](#)

Optimize Your Supply Chain with WIN SOURCE Solutions

- ✓ Global Sourcing Solution
- ✓ Obsolete Management
- ✓ Cost Control Management
- ✓ Shortage Management
- ✓ Alternative Solution
- ✓ Excess Inventory Management