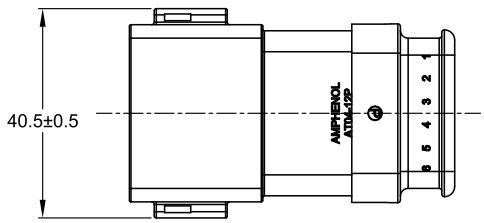




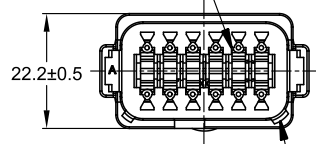
**THE DATASHEET OF  
AT04-12PC-SR2GN**



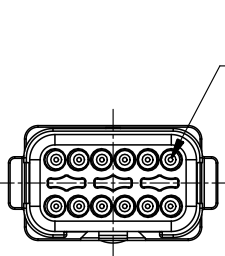
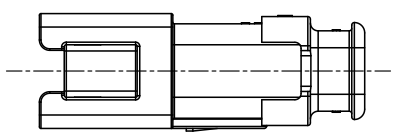
| REVISIONS |        |                            |         |        |       |
|-----------|--------|----------------------------|---------|--------|-------|
| REV       | ECO    | DESCRIPTION                | DATE    | BY     | APPR  |
| A3        | -      | RELEASE NEW DRAWING FORMAT | 11DEC13 | DRP    | -     |
| A4        | C1435S | UPDATE THE APPEARANCE      | 23JUN21 | RONALD | TOMMY |



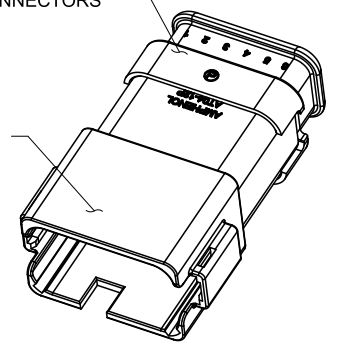
REQUIRES CONTACT RETENTION WEDGE AW12P



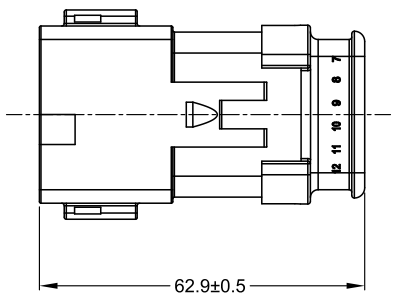
1 KEYWAY (3) PLACES



STRAIN RELIEF END CAP - BLACK - ALL CONNECTORS



1 REFER TO SHEET 2 FOR AVAILABLE CONNECTOR HOUSING COLORS



NOTES: UNLESS OTHERWISE SPECIFIED

1 SEE SHEET 2 FOR KEY ARRANGEMENTS AND COLORS.

2. MATERIAL:  
HOUSING: THERMOPLASTIC  
SEAL: SILICONE RUBBER

3. MODIFICATIONS: STRAIN RELIEF END CAP;  
REDUCED DIA. WIRE SEAL

4. SPECIFICATIONS:  
4.1 CURRENT RATING: 13 AMPS  
4.2 OPERATING TEMPERATURE: -55°C TO +125°C  
4.3 DIELECTRIC WITHSTANDING VOLTAGE: LESS THAN 2 MILLIAMPS CURRENT LEAKAGE @ 1500 VOLTS AC.  
4.4 INSULATION RESISTANCE: 1000 MEGOHMS MIN @ 25°C.  
4.5 MOISTURE RESISTANCE: IP69K & IP68 (1M OF WATER FOR A PERIOD OF 24 HOURS, MATED CONDITION)  
4.6 MATING CYCLE DURABILITY: 100 CYCLES  
4.7 RoHS COMPLIANT

5. MATING PART: AT06-12SX\* PLUG  
( X = A,B,C,D KEYS; \* = MODIFICATIONS AND COLORS )

6. ALL DIMENSIONS ARE FOR REFERENCE USE ONLY.

7 CONTACT SIZE AND REAR SEAL WIRE RANGE:

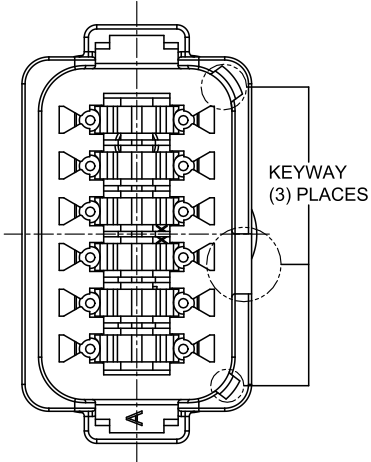
| CONTACT SIZE | MIN. INSUL O.D.   | MAX. INSUL O.D.   | TYPICAL WIRE RANGE |
|--------------|-------------------|-------------------|--------------------|
| 16           | 1.35 mm (.053 in) | 3.05 mm (.120 in) | 14 - 20 AWG        |

| SEE SHEET 2                          |                | DESCRIPTION  |          | ITEM |
|--------------------------------------|----------------|--|----------|------|
| PART NUMBER                          |                | DESCRIPTION  |          | ITEM |
| QUANTITY                             | MATERIALS LIST |  |          |      |
| UNLESS OTHERWISE SPECIFIED           |                |  |          |      |
| 1) All dimensions are in metric(mm). |                |  |          |      |
| 2) Tolerances are as follows:        |                |  |          |      |
| 1 PL DEC ±0.30   Fractions ±1/64     |                |  |          |      |
| 2 PL DEC ±0.15   Angles ±1°          |                |  |          |      |
| 3 PL DEC ±0.08                       |                |  |          |      |
| 3) Note reference =                  |                |  |          |      |
| SIGNATURES                           |                | DATE   |          |      |
| DRAWN: RONGLA                        |                | 23JUN21  |          |      |
| CHECKED: ORION                       |                | 24JUN21  |          |      |
| ENGINEER:                            |                |  |          |      |
| APPROVAL: TOMMY                      |                | 25JUN21  |          |      |
| MATERIAL SPECIFICATIONS:             |                | CUSTOMER:  |          |      |
| WEIGHT:27.0g                         |                | THIS DRAWING IS SUPPLIED FOR INFORMATION ONLY. DESIGN FEATURES, SPECIFICATIONS AND PERFORMANCE DATA SHOWN HEREON ARE THE PROPERTY OF THE AMPHENOL CORPORATION. NO RIGHTS OF REPRODUCTION ARE IMPLIED. ALL DIMENSIONS ARE SUBJECT TO NORMAL MANUFACTURING VARIATIONS. |          |      |
| PROCESS SPECIFICATIONS:              |                | SCALE: NONE  |          |      |
| NEXT ASSY:                           |                | SHEET 1 OF 2   |          |      |
|                                      |                | RECEP., 12 PIN, AT SERIES, KEYED, STRAIN RELIEF END CAP, REDUCED DIA SEAL  |          |      |
| SIZE                                 | TYPE           | DWG NO:  | REVISION |      |
| B                                    | C-             | AT04-12PX-SR2XX  | A4       |      |

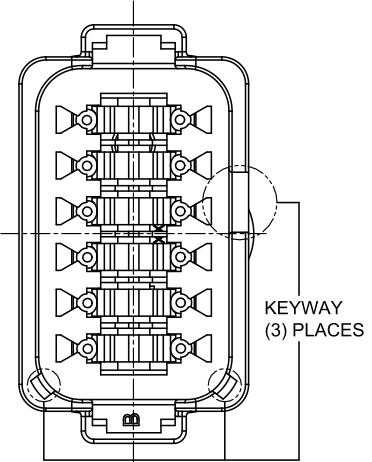
TITLE: RECEP., 12 PIN, AT SERIES, KEYED, STRAIN RELIEF END CAP, REDUCED DIA SEAL  
DWG NO: AT04-12PX-SR2XX  
REV: A4  
SH: 1  
OF: 2

| REVISIONS |        |                            |         |        |       |
|-----------|--------|----------------------------|---------|--------|-------|
| REV       | ECO    | DESCRIPTION                | DATE    | BY     | APPR  |
| A3        | -      | RELEASE NEW DRAWING FORMAT | 11DEC13 | DRP    | -     |
| A4        | C1435S | UPDATE THE APPEARANCE      | 23JUN21 | RONALD | TOMMY |

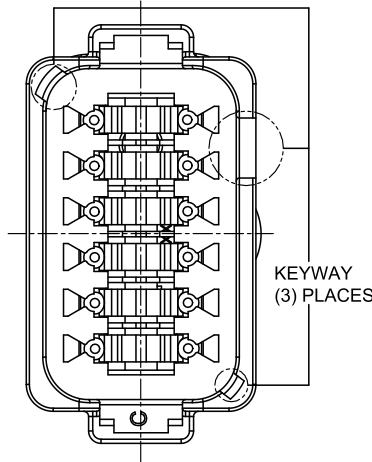
P/N AT04-12PA-SR2GY  
KEY-A CONFIGURATION  
STANDARD COLOR: GREY



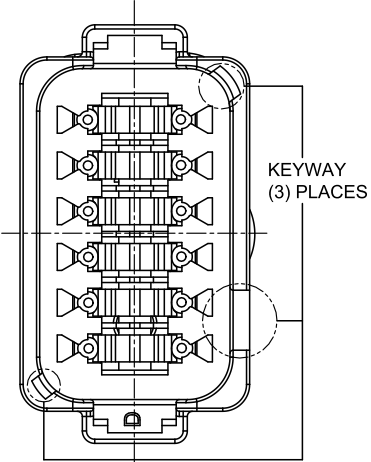
P/N AT04-12PB-SR2BK  
KEY-B CONFIGURATION  
STANDARD COLOR: BLACK



P/N AT04-12PC-SR2GN  
KEY-C CONFIGURATION  
STANDARD COLOR: GREEN



P/N AT04-12PD-SR2BR  
KEY-D CONFIGURATION  
STANDARD COLOR: BROWN



| KEY-A CONFIGURATION |                        |
|---------------------|------------------------|
| COLOR               | PART NUMBER            |
| <b>* GREY</b>       | <b>AT04-12PA-SR2GY</b> |
| BLACK               | AT04-12PA-SR2BK        |
| GREEN               | AT04-12PA-SR2GN        |
| BROWN               | AT04-12PA-SR2BR        |

| KEY-B CONFIGURATION |                        |
|---------------------|------------------------|
| COLOR               | PART NUMBER            |
| GREY                | AT04-12PB-SR2GY        |
| <b>* BLACK</b>      | <b>AT04-12PB-SR2BK</b> |
| GREEN               | AT04-12PB-SR2GN        |
| BROWN               | AT04-12PB-SR2BR        |

| KEY-C CONFIGURATION |                        |
|---------------------|------------------------|
| COLOR               | PART NUMBER            |
| GREY                | AT04-12PC-SR2GY        |
| BLACK               | AT04-12PC-SR2BK        |
| <b>* GREEN</b>      | <b>AT04-12PC-SR2GN</b> |
| BROWN               | AT04-12PC-SR2BR        |

| KEY-D CONFIGURATION |                        |
|---------------------|------------------------|
| COLOR               | PART NUMBER            |
| GREY                | AT04-12PD-SR2GY        |
| BLACK               | AT04-12PD-SR2BK        |
| GREEN               | AT04-12PD-SR2GN        |
| <b>* BROWN</b>      | <b>AT04-12PD-SR2BR</b> |

NOTE:  
AN ASTERISKS ( \* ) PLACED BEFORE THE COLOR DENOTES THE STANDARD MOLDED COLOR OF THE CONNECTORS SHOWN ABOVE. STRAIN RELIEF END CAPS ARE AVAILABLE IN BLACK ONLY.  
OTHER COLORS SHOWN ARE AVAILABLE VIA SPECIAL ORDER.

TITLE: RECEPTACLE, 12 PIN, AT SERIES, KEYED, STRAIN RELIEF, REDUCED DIA SEAL  
DWG NO: AT04-12PX-SR2XX  
REV: A4  
SH: 1  
OF: 2

|                                       |                |  |  |                         |
|---------------------------------------|----------------|--|--|-------------------------|
| SEE SHEET 2                           |                | DESCRIPTION  |  | ITEM                    |
| PART NUMBER                           |                | DESCRIPTION  |  | ITEM                    |
| QUANTITY                              | MATERIALS LIST |  |  |                         |
| UNLESS OTHERWISE SPECIFIED            |                | SIGNATURES   |  | DATE                    |
| 1) All dimensions are in metric (mm). |                | DRAWN: RONGLA  |  | 23JUN21                 |
| 2) Tolerances are as follows:         |                | CHECKED: ORION   |  | 24JUN21                 |
| 1 PL DEC ±0.30   Fractions ±1/64      |                | ENGINEER:  |  |                         |
| 2 PL DEC ±0.15   Angles ±1°           |                | APPROVAL: TOMMY  |  | 25JUN21                 |
| 3) Note reference =                   |                | CUSTOMER:  |  |                         |
| MATERIAL SPECIFICATIONS:              |                | THIS DRAWING IS SUPPLIED FOR INFORMATION ONLY. DESIGN FEATURES, SPECIFICATIONS AND PERFORMANCE DATA SHOWN HEREON ARE THE PROPERTY OF THE AMPHENOL CORPORATION. NO RIGHTS OF REPRODUCTION ARE IMPLIED. ALL DIMENSIONS ARE SUBJECT TO NORMAL MANUFACTURING VARIATIONS. |  |                         |
| WEIGHT: 27.0g                         |                | SIZE   |  | TYPE                    |
| PROCESS SPECIFICATIONS:               |                | B C-   |  | DWG NO: AT04-12PX-SR2XX |
| NEXT ASSY:                            |                | SCALE: NONE  |  | REVISION: A4            |

**Amphenol**  
Sine Systems - www.amphenol-sine.com  
44724 Morley Drive  
Clinton Township, MI 48036

RECEP., 12 PIN, AT SERIES, KEYED, STRAIN RELIEF END CAP, REDUCED DIA SEAL

# A Series™ - Contact Size 16 Options (Works with: AT, ATV, AHD-9, ARC, DuraMate and PanelMate Series)

| Machined Contacts, Sockets & Pins |  |      |       |          |
|-----------------------------------|--|------|-------|----------|
| Part Number                       | Description                            | Size | AWG   | Type     |
| AT60-215-1631                     | Male Contact - Pin, Gold-plated        | 16   | 14    | Machined |
| AT62-209-1631                     | Female Contact - Socket, Gold-plated   | 16   | 14    | Machined |
| AT60-215-16141                    | Male Contact - Pin, Nickel-plated      | 16   | 14    | Machined |
| AT62-209-16141                    | Female Contact - Socket, Nickel-plated | 16   | 14    | Machined |
| AT60-202-1631                     | Male Contact - Pin, Gold-plated        | 16   | 16-20 | Machined |
| AT62-201-1631                     | Female Contact - Socket, Gold-plated   | 16   | 16-20 | Machined |
| AT60-202-16141                    | Male Contact - Pin, Nickel-plated      | 16   | 16-20 | Machined |
| AT62-201-16141                    | Female Contact - Socket, Nickel-plated | 16   | 16-20 | Machined |
| AT60-202-1631-22                  | Male Contact - Pin, Gold-plated        | 16   | 22-24 | Machined |
| AT62-201-1631-22                  | Female Contact - Socket, Gold-plated   | 16   | 22-24 | Machined |
| AT60-202-16141-22                 | Male Contact - Pin, Nickel-plated      | 16   | 22-24 | Machined |
| AT62-201-16141-22                 | Female Contact - Socket, Nickel-plated | 16   | 22-24 | Machined |

| Tooling - Machined Contacts |   |
|-----------------------------|---|
| Part Number                 | Description   |
| AUTK-16                     | Hand Crimp Tool, Size 16                                      |
| AUTK-100                    | Universal Heavy Duty Contact Crimping Tool Kit, Size 12/16/20 |
| CA-5D12                     | Universal Hand Crimp Tool, Size 12/16/20                      |
| CA-5E12                     | Pneumatic Crimp Tool, Size 12/16/20                           |

| Contact Removal Tools (For both Machined or Stamped & Formed Contacts) |  |
|--|--|
| Part Number  | Description                            |
| ATRT-100   | Contact and Wedgelock Extraction Tool  |
| AT11-310-1605  | Contact Removal Tool, Plastic, Size 16 |

| Sealing Plugs (For both Machined or Stamped & Formed Contacts) |   |
|--|---|
| Part Number  | Description                                     |
| A114017  | Sealing Plug, Size 16, White                    |
| A114017-SR   | Sealing Plug, Size 16, SR01 Series, Black       |
| AT13-217-1605  | Locking Sealing Plug, Size 16, Grey             |
| AT13-217-1605-SR   | Locking Sealing Plug, Size 16, SR01 Series, Red |

| Stamped & Formed Contacts, Sockets & Pins |  |      |       |                  |
|---|--|------|-------|------------------|
| Part Number                               | Description                            | Size | AWG   | Type             |
| AT60-14-0122                              | Male Contact - Pin, Nickel-plated      | 16   | 14-18 | Stamped & Formed |
| AT62-14-0122                              | Female Contact - Socket, Nickel-plated | 16   | 14-18 | Stamped & Formed |
| AT60-14-0144                              | Male Contact - Pin, Gold-plated        | 16   | 14-18 | Stamped & Formed |
| AT62-14-0144                              | Female Contact - Socket, Gold-plated   | 16   | 14-18 | Stamped & Formed |
| AT60-16-0122                              | Male Contact - Pin, Nickel-plated      | 16   | 16-18 | Stamped & Formed |
| AT62-16-0122                              | Female Contact - Socket, Nickel-plated | 16   | 16-18 | Stamped & Formed |
| AT60-16-0144                              | Male Contact - Pin, Gold-plated        | 16   | 16-18 | Stamped & Formed |
| AT62-16-0144                              | Female Contact - Socket, Gold-plated   | 16   | 16-18 | Stamped & Formed |
| AT60-16-0622                              | Male Contact - Pin, Nickel-plated      | 16   | 16-20 | Stamped & Formed |
| AT62-16-0622                              | Female Contact - Socket, Nickel-plated | 16   | 16-20 | Stamped & Formed |
| AT60-16-0644                              | Male Contact - Pin, Gold-plated        | 16   | 16-20 | Stamped & Formed |
| AT62-16-0644                              | Female Contact - Socket, Gold-plated   | 16   | 16-20 | Stamped & Formed |
| AT60-16-0677                              | Male Contact - Pin, Tin-plated         | 16   | 16-20 | Stamped & Formed |
| AT62-16-0677                              | Female Contact - Socket, Tin-plated    | 16   | 16-20 | Stamped & Formed |
| AT60-16-0822                              | Male Contact - Pin, Nickel-plated      | 16   | 20-22 | Stamped & Formed |
| AT62-16-0822                              | Female Contact - Socket, Nickel-plated | 16   | 20-22 | Stamped & Formed |
| AT60-16-0844                              | Male Contact - Pin, Gold-plated        | 16   | 20-22 | Stamped & Formed |
| AT62-16-0844                              | Female Contact - Socket, Gold-plated   | 16   | 20-22 | Stamped & Formed |

| Tooling - Stamped & Formed Contacts |                                     |
|-------------------------------------|-------------------------------------|
| MFX-3950                            | Crimp Die - Size 16, 18-20AWG       |
| MFX-3953                            | Crimp Die - Size 16, 16-18AWG       |
| MFX-3975                            | Crimp Die - Size 16, 14-16AWG       |
| MFX-3990                            | Crimp Die - Size 16, 20-22AWG       |
| ATT-16-00                           | Hand Crimp Tool - Size 16, 14-16AWG |
| ATT-16-01                           | Hand Crimp Tool - Size 16, 18-20AWG |
| ATT-1612-03                         | Hand Crimp Tool - Size 16, 20-22AWG |

## Looking for pricing, stock, or lifecycle information?

Click below to explore more details on WIN SOURCE:

- ⊖ [View AT04-12PC-SR2GN on WIN SOURCE](#)
- ⊖ [Amphenol Sine Systems Corp Information](#)

## Optimize Your Supply Chain with WIN SOURCE Solutions

- ✓ Global Sourcing Solution
- ✓ Obsolete Management
- ✓ Cost Control Management
- ✓ Shortage Management
- ✓ Alternative Solution
- ✓ Excess Inventory Management