

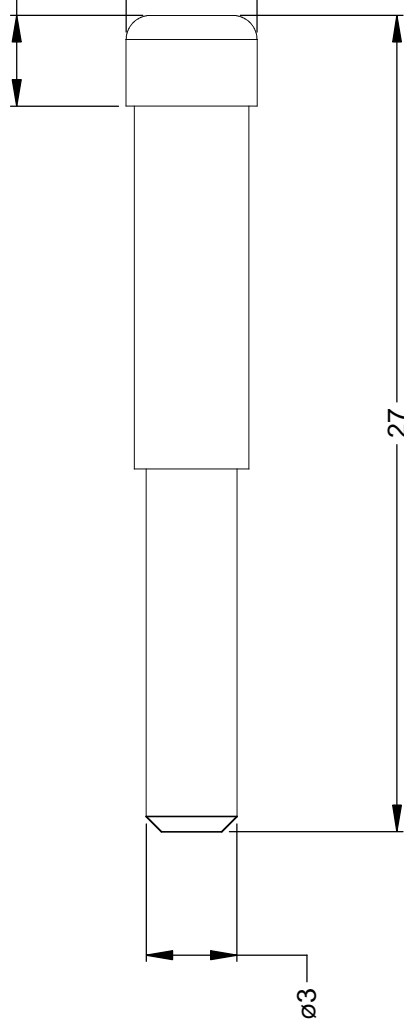
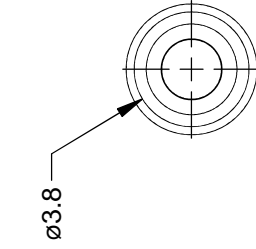


**THE DATASHEET OF  
A114017-SR**




## REVISION

REV	ECO	DESCRIPTION
A3	-	RELEASE NEW DWG FORM



NOTES: UNLESS OTHERWISE SPECIFIED

1. MATERIAL: THERMOPLASTIC; RoHS COMPLIANT
2. COLOR: BLACK
3. CONTACT SIZE: 16
4. USE WITH AT-SR SERIES CONNECTORS
5. ALL DIMENSIONS ARE FOR REFERENCE USE ONLY.

QUANTITY	PART NUMBER	MATERIALS LIST		DE
	A114017-SR	SIGNATURES	DATE	A
UNLESS OTHERWISE SPECIFIED		DRAWN: D.PARKS	06NOV13	Size
1) All dimensions are in metric(mm).		CHECKED:		TYPE
2) Tolerances are as follows:		ENGINEER:		A C-
1 PL DEC $\pm 0.30$ Fractions $\pm 1/64$		APPROVAL:		SCALE: NONE
2 PL DEC $\pm 0.15$ Angles $\pm 1^\circ$		CUSTOMER:		
3 PL DEC $\pm 0.08$		THIS DRAWING IS SUPPLIED FOR INFORMATION ONLY. DESIGN FEATURES, SPECIFICATIONS AND PERFORMANCE DATA SHOWN HEREON ARE THE PROPERTY OF THE AMPHENOL CORPORATION. NO RIGHTS OR PERMISSIONS ARE GRANTED. ALL DIMENSIONS ARE SUBJECT TO NORMAL MANUFACTURING VARIATIONS.		
3) Note reference = 		S		
MATERIAL SPECIFICATIONS:				
PROCESS SPECIFICATIONS:				
NEXT ASSY:				

## Looking for pricing, stock, or lifecycle information?

Click below to explore more details on WIN SOURCE:

- ⊖ [View A114017-SR on WIN SOURCE](#)
- ⊖ [Amphenol Sine Systems Corp Information](#)

## Optimize Your Supply Chain with WIN SOURCE Solutions

- ✓ Global Sourcing Solution
- ✓ Obsolete Management
- ✓ Cost Control Management
- ✓ Shortage Management
- ✓ Alternative Solution
- ✓ Excess Inventory Management