

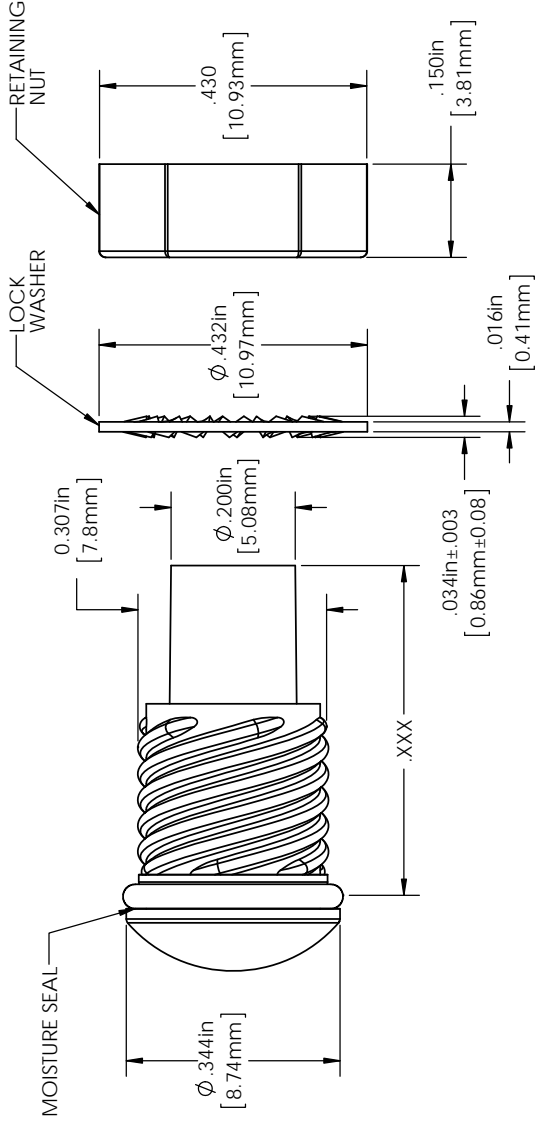
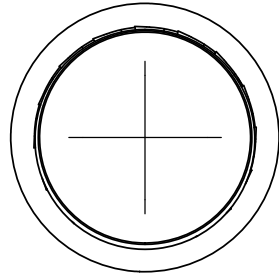
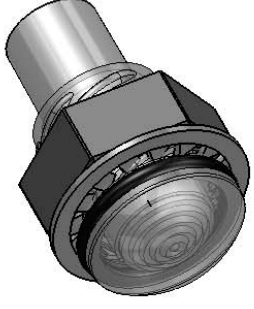


**THE DATASHEET OF
LCS_132_RTP**



NOTES:

1. **MOUNTING:** Mounts in a $\phi .312 \pm .002$ ($\phi 7.92\text{mm} \pm 0.051$) panel hole on $.500$ (12.7mm) centers. Panel thickness $.031$ ($.8\text{mm}$) to $.125$ (3.18mm). Panel hole shall be deburred, but not chamfered.
2. **ASSEMBLY:** Insert Litepipe through the panel hole, slide lock washer onto lens barrel on litepipe and twist on retaining ring. Slide PCB into position aligning LED with the end of the Litepipe unit.
3. **MATERIAL:** Litepipe - Acrylic (Clear optical grade) UL 94-HB
 Lens - Polycarbonate UL 94-V2
 Seal - EPDM
 Lock washer - FH Steel, Nickel Plate
 Retaining Nut - Thermoplastic (white) UL 94-V0
4. Meets NEMA 6P/IP 67 standards
5. U.S. & Foreign Pat. issued

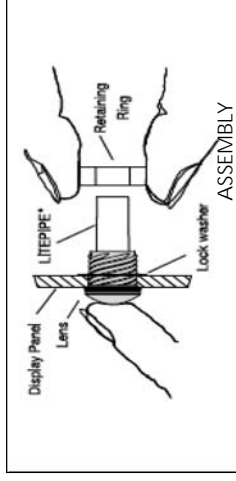


ORDERING CODE: **LCS XXX XXX**

LITEPIPE	XXX =	LENGTH
032		.320"
052		.520"
072		.720"
092		.92"
112		1.12"
132		1.32"

CUSTOM LENGTHS
AVAILABLE UPON
REQUEST

XXX =	LENS	COLOR
RTP		RED TRANSPARENT
ATP		AMBER TRANSPARENT
GTP		GREEN TRANSPARENT
BTP		BLUE TRANSPARENT
YTP		YELLOW TRANSPARENT
CTP		CLEAR TRANSPARENT



8

7

6

5

4

3

ECN #	REV.	REVISION
	001	
	002	MODIFIED

DESIGN REVIEW (SEE ITEM 1)		DATE	
GENERAL	DETAILS	DRAWN	APPROVAL
XXX	XXX	KHOWARD	8/18/04
XXX	XXX	DPZ	8/19/04
MATERIAL		SEE NOTES	
FINISH		SEE NOTES	
<small>THE INFORMATION CONTAINED HEREIN IS THE PROPERTY OF TRIMBLE AND IS UNCLASSIFIED EXCEPT WHERE SHOWN OTHERWISE. IT IS TO BE CONTAINED IN THE COMPANY'S PROPRIETARY INFORMATION AND IS NOT TO BE RELEASED TO THE PUBLIC WITHOUT THE WRITTEN PERMISSION OF TRIMBLE AND IS NOT TO BE REPRODUCED OR TRANSMITTED IN ANY FORM OR BY ANY MEANS, ELECTRONIC OR MECHANICAL, INCLUDING PHOTOCOPYING, RECORDING, OR BY ANY INFORMATION STORAGE AND RETRIEVAL SYSTEM.</small>			

8

7

6

5

4

3

DO NOT SCALE DRAWING

Looking for pricing, stock, or lifecycle information?

Click below to explore more details on WIN SOURCE:

- [⊖ View LCS_132_RTP on WIN SOURCE](#)
- [⊖ Visual Communications Company - VCC Information](#)

Optimize Your Supply Chain with WIN SOURCE Solutions

- ✓ Global Sourcing Solution
- ✓ Obsolete Management
- ✓ Cost Control Management
- ✓ Shortage Management
- ✓ Alternative Solution
- ✓ Excess Inventory Management