

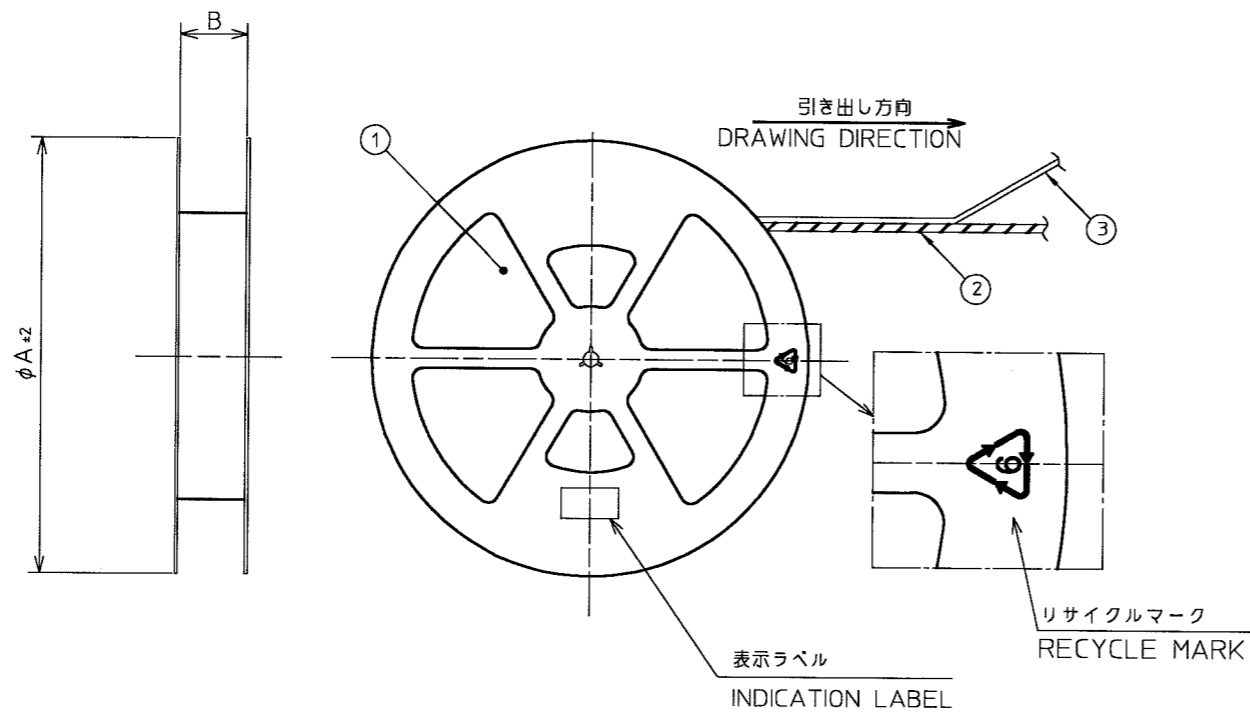


**THE DATASHEET OF
10017251-392240ELF**



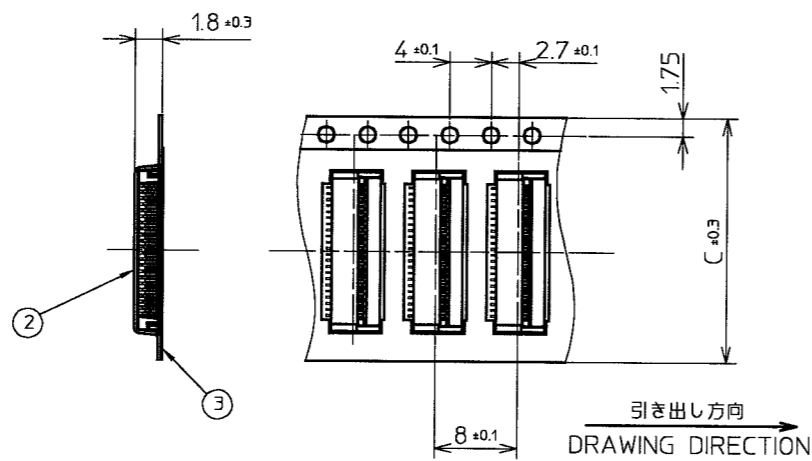
PRODUCT NO.
10017251-__2240ELF

| REVISIONS | | | | |
|-----------|-------------|----------|-----|-----------|
| REV | DESCRIPTION | ECN | BY | DATE |
| A | RELEASED | J03-0220 | K.O | 22/May/03 |
| B | REVISED | J03-0300 | K.O | 11/JUL/03 |
| C | REVISED | J03-0452 | K.O | 14/Nov/03 |
| E | REVISED | J04-0041 | M.Y | 15/Jan/04 |
| F | REVISED | J04-0336 | M.Y | 27/Sep/04 |
| G | REVISED | J04-0473 | M.Y | 05/Jan/05 |
| H | REVISED | J04-0447 | M.Y | 20/Jan/05 |
| J | REVISED | J05-0345 | M.Y | 10/Jun/05 |
| K | REVISED | J05-0783 | M.Y | 16/Nov/05 |

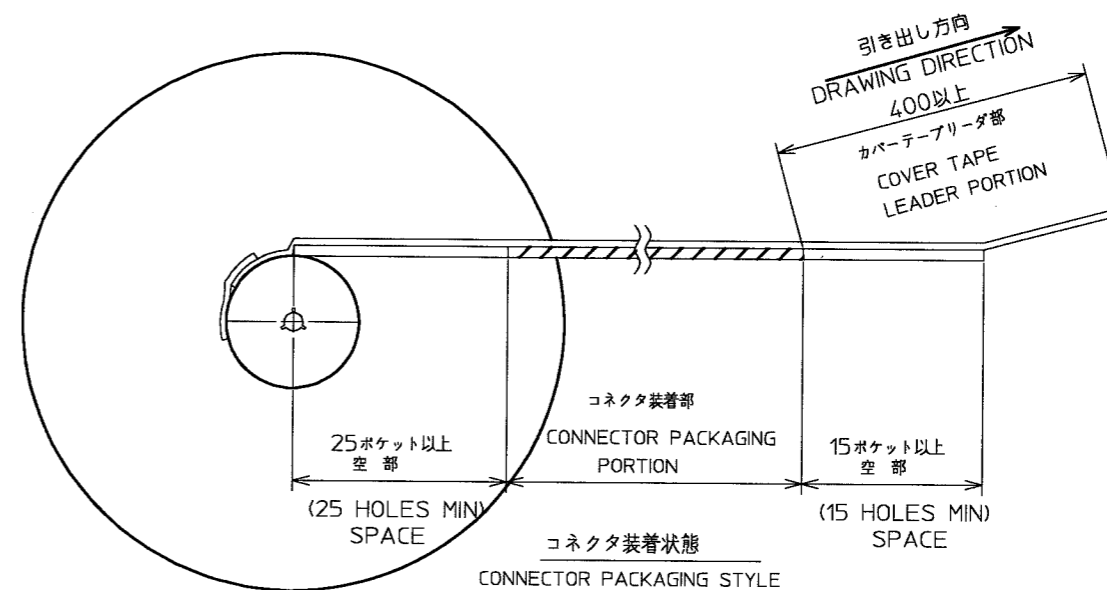


| エンボステープ梱包型番 EMBOSS TAPE | 寸法 DIMENSIONS | | |
|------------------------------|---------------|--------------|----|
| | ϕA | B | C |
| 10017251-152240ELF~452240ELF | $\phi 330$ | 25.5 ± 1 | 24 |
| 10017251-112240ELF | $\phi 330$ | 17.5 ± 1 | 16 |

| PT.NO. | PARTS NAME | PRODUCT NO. | MATERIAL | Q'TY |
|--------|-------------|------------------|-----------------|-------|
| 1 | REEL | _____ | POLYSTYRENE | 1 |
| 2 | EMBOSS TAPE | _____ | PET | 1 |
| 3 | COVER TAPE | _____ | POLYESTER | _____ |
| 4 | CONNECTOR | 10017251-__224LF | 10017251 SHEET2 | 4500 |



10017251-1121_0E~4521_0E



注記
1.本製品は、自動実装(SMT)対応、FPC用コネクタのプラスチックテープ梱包品である。
2.プラスチック(エンボス)テープ及びリールの形状寸法は、JIS C 0806 (電子部品のテーピング(表面実装部品))に準ずる。

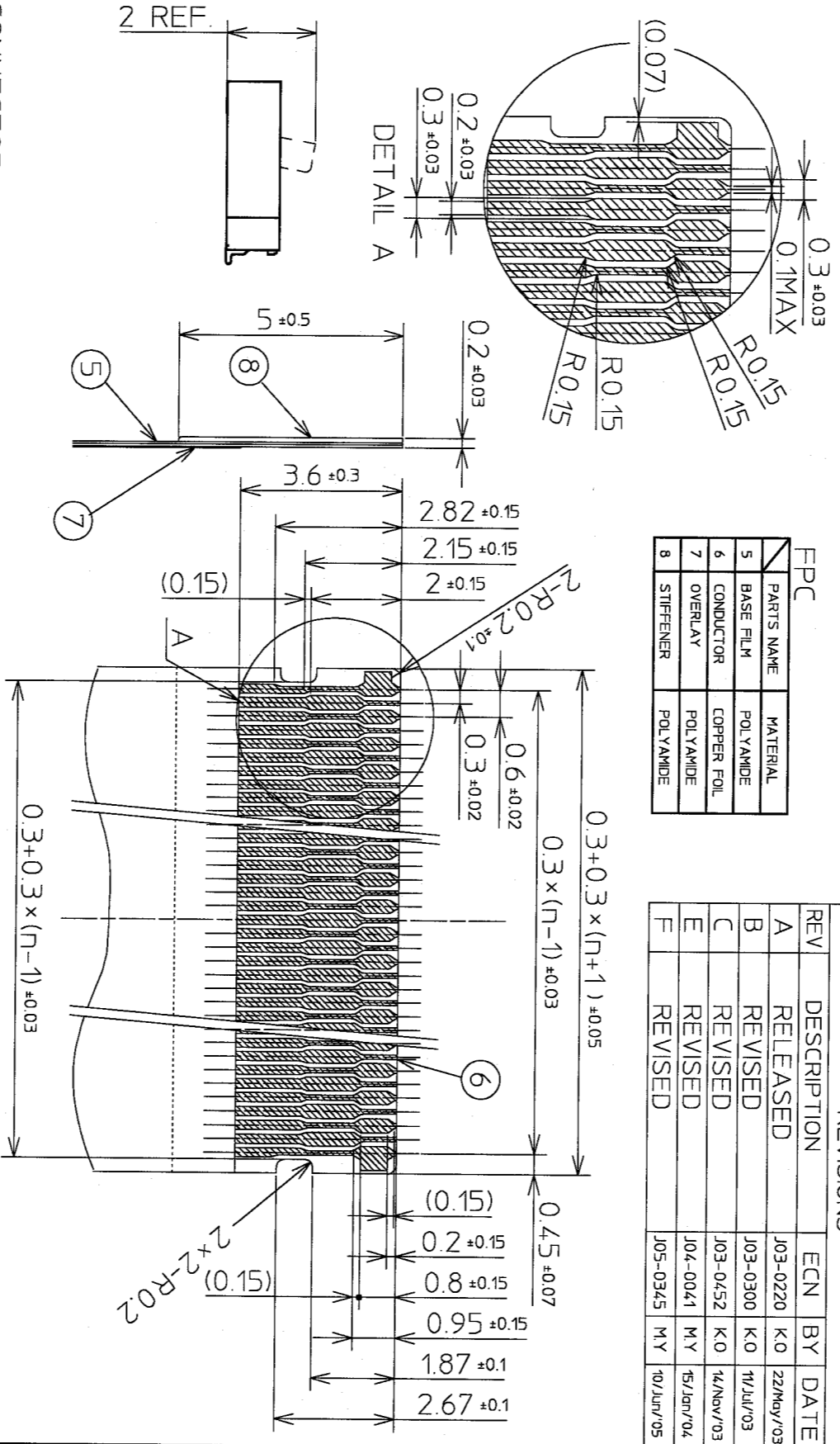
NOTES
1.THIS IS PLASTIC TAPE PACKAGED CONNECTOR USED FOR FPC AND COPES WITH AUTOMATIC MOUNTING (SMT)
2.SEE JIS 0806 (PACKING OF ELECTRONIC COMPONENTS ON CONTINUOUS TAPES (SURFACE MOUNTING DEVICES))

| SHEET INDEX | ISSUE | K | F | | | | | | | | | | | FCI | | | |
|---------------------------------------|--------|---|---|----------|-------------|-----------|---------------|---------------------|--|--|--|--|--|-----|--|--|--|
| | SH NO. | 1 | 2 | | | | | | | | | | | | | | |
| TOLERANCES UNLESS OTHERWISE SPECIFIED | | | | MAT | DR | DATE | CUSTOMER COPY | TITLE | | | | | | | | | |
| | | | | SEE NOTE | M.Yamashita | 16/Nov/05 | | エンボステープ梱包品 | | | | | | | | | |
| | | | | | ENGR | 16/Nov/05 | | EMBOSS TAPE PACKAGE | | | | | | | | | |
| | | | | | M.Yamashita | 16/Nov/05 | | PRODUCT FAMILY | | | | | | | | | |
| | | | | FINISH | CHK | 16/Nov/05 | | 58FF FLEX 0.3 | | | | | | | | | |
| | | | | —#— | K. Okano | 16/Nov/05 | | SCALE | | | | | | | | | |
| | | | | | APPD | 11/16/05 | | SIZE | | | | | | | | | |
| | | | | | | | | DWG. NO. | | | | | | | | | |
| | | | | | | | | 10017251 | | | | | | | | | |
| | | | | | | | | REV | | | | | | | | | |
| | | | | | | | | K | | | | | | | | | |
| | | | | | | | | SHEET | | | | | | | | | |
| | | | | | | | | 1 of | | | | | | | | | |

DF-003A REV E
DO NOT SCALE PRINT THIS INFORMATION IS CONFIDENTIAL AND IS DISCLOSED TO YOU ON CONDITION THAN NO FURTHER DISCLOSURE IS MADE BY YOU TO OTHER THAN FCI PERSONNEL WITHOUT WRITTEN AUTHORIZATION FROM FCI JAPAN K.K.

| REV | DESCRIPTION | ECN | BY | DATE |
|-----|-------------|----------|-----|-----------|
| A | RELEASED | J03-0220 | K.O | 22/May/03 |
| B | REVISED | J03-0300 | K.O | 11/Jul/03 |
| C | REVISED | J03-0452 | K.O | 14/Nov/03 |
| E | REVISED | J04-0041 | M.Y | 15/Jun/04 |
| F | REVISED | J05-0345 | M.Y | 10/Jun/05 |

| PARTS NAME | MATERIAL |
|-------------|-------------|
| 5 BASE FILM | POLYAMIDE |
| 6 CONDUCTOR | COPPER FOIL |
| 7 OVERLAY | POLYAMIDE |
| 8 STIFFENER | POLYAMIDE |



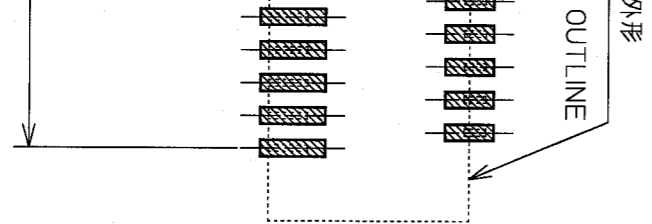
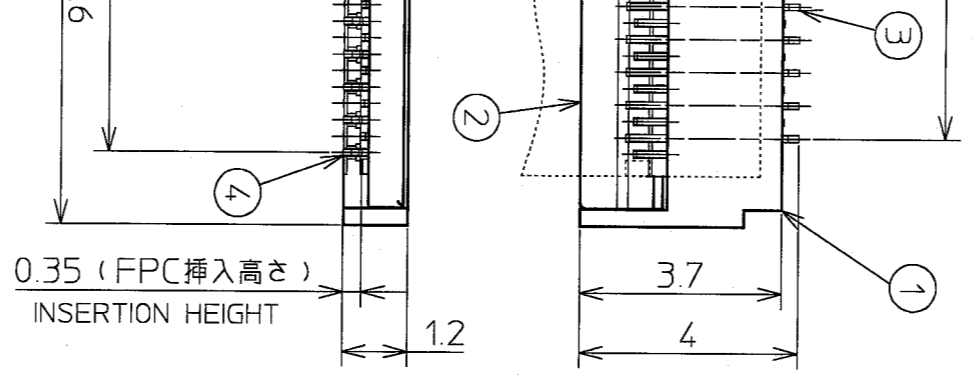
| PARTS NAME | MATERIAL | QTY | DESCRIPTION |
|-------------|---------------|--------|-------------|
| 1 HOUSING | THERMOPLASTIC | 1 | COLOR:WHITE |
| 2 ACTUATOR | THERMOPLASTIC | 1 | COLOR:BLACK |
| 3 CONTACT A | COPPER ALLOY | In-1/2 | |
| 4 CONTACT B | COPPER ALLOY | In+1/2 | |

| PRODUCT No. | NO OF CONTACT | A | B | C |
|------------------|---------------|------|------|------|
| 10017251-11224LF | 11 | 3.0 | 2.4 | 5.6 |
| 10017251-15224LF | 15 | 4.2 | 3.6 | 6.8 |
| 10017251-19224LF | 19 | 5.4 | 4.8 | 8.0 |
| 10017251-23224LF | 23 | 6.6 | 6.0 | 9.2 |
| 10017251-25224LF | 25 | 7.2 | 6.6 | 9.8 |
| 10017251-27224LF | 27 | 7.8 | 7.2 | 10.4 |
| 10017251-31224LF | 31 | 9.0 | 8.4 | 11.6 |
| 10017251-39224LF | 39 | 11.4 | 10.8 | 14.0 |
| 10017251-45224LF | 45 | 13.2 | 12.6 | 15.8 |

NOTE

1. FPCの補強板接着には、熱硬化接着剤を使用し、接着方式は熱圧着とする。Adhesive method of supporting tape shall be heat crimping method and thermosetting adhesive material shall be used.
2. 本製品は、GS-22-008に記載されたヨーロッパ適合指令と他国の規制に適合しています。This product meets European Union Directives and other country regulations as described in GS-22-008.
3. マット仕様 Finish

| SURFACE TREATMENT | |
|-------------------|------------------------|
| 10017251-224LF | GOLD OVER NICKEL PLATE |



| SHEET INDEX | ISSUE SH NO. | TOLERANCES UNLESS OTHERWISE SPECIFIED | MAT | DR | ENGR | DATE | CUSTOMER | TITLE | PRODUCT FAMILY | SCALE | SIZE | DWG. NO. | REV SHEET | CODE |
|-------------|--------------|---------------------------------------|----------|-------------|-------------|-----------|----------|------------------------------------|----------------|-------|----------|----------|-----------|------|
| | | ±0.3 | SEE NOTE | M.YAMASHITA | M.YAMASHITA | 10/Jun/05 | COPY | 0.3mm PITCH CONNECTOR (UPPER TYPE) | 58FF FLEX 0.3 | B | 10017251 | F | 20F | |
| | | ±1' | | | | | | | | | | | | |

A
Fci

DISCLOSED TO YOU ON CONDITION THAT NO OTHER THAN FCI PERSONNEL WITHOUT KK

Looking for pricing, stock, or lifecycle information?

Click below to explore more details on WIN SOURCE:

 [View 10017251-392240ELF on WIN SOURCE](#)

 [Amphenol Information](#)

Optimize Your Supply Chain with WIN SOURCE Solutions

-  Global Sourcing Solution
-  Obsolete Management
-  Cost Control Management
-  Shortage Management
-  Alternative Solution
-  Excess Inventory Management