



**THE DATASHEET OF
SN-6701-AT**



DATASHEET

IndustrialPro® 6000 Cellular Routers

Fast, Secure Industrial Connectivity



PRODUCT HIGHLIGHTS

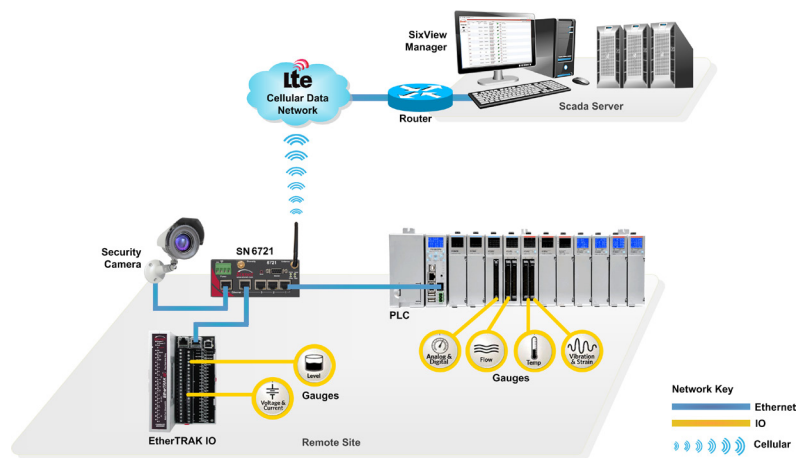
- Supports 4G LTE connectivity with fall back to 3G and 2G
- Fast remote site access lowers total cost of ownership
- Web-based managing tools simplify deployment
- Small footprint allows connectivity in tight spaces
- Built-in security enables infrastructure protection
- Rugged, reliable design supports the toughest applications

APPLICATIONS

- Power & Energy
- Oil & Gas
- Water/Wastewater
- Transportation
- Video & Security

Sixnet IndustrialPro® 6000 industrial cellular routers offer a cost-effective wireless alternative for secure network communication. The rugged IndustrialPro series is ideal for harsh environments where equipment wiring space is limited. Ethernet and serial interfaces provide easy wireless communication between SCADA servers and remote RTUs, PLC/controllers and other automation devices. Additionally, support for 4G LTE with 3G fall back, provides streaming video support for monitoring applications. Convenient VPN capabilities, data encryption and stateful firewall configuration can be used to secure remote networks.

APPLICATION SCENARIO: REMOTE DATA COLLECTION



FEATURES & BENEFITS

Ubiquitous Cellular Connectivity

- Offers a cost-effective alternative to traditional landlines
- Supports cellular technology
 - 2G/2.5G (GSM GPRS/EDGE and CDMA 1XRTT)
 - 3G (GSM WCDMA/HSDPA/HSUPA or EVDO Rev A)
 - 4G LTE

Built-In Security & Routing

- Protects against intrusion
- Provides ultra-reliable and secure cellular connectivity
 - Secure data using VPN tunnels (IPsec, SSL)
 - Port forwarding
 - Stateful firewall
 - Packet filtering
 - Access Control List (ACL)

Lower Cost of Ownership

- Eliminates visits to remote sites
- Reduces infrastructure complexity
 - Connect multiple devices to single WAN link
 - Remote TCP/IP based capabilities
 - Integrated switching/routing capabilities
 - Serial-to-IP conversion
 - Access IP and serial devices simultaneously

Web-Based Configuration Management

- Simplifies deployment and configuration
- Provides remote monitoring and control
 - Remote diagnostics and troubleshooting
 - Easy to use

Rugged, Compact Design

- Deploys easily in space-constrained locations
- Approved for hazardous locations
 - Operating temperature: -40° to +85°C
 - DIN-rail mounting
 - Power over Ethernet (PoE) option

IndustrialPro 6000 Cellular Routers

Fast, Secure Industrial Connectivity

SPECIFICATIONS

Wireless Interface

- AT&T LTE with fall back to HSPA and EDGE
- Bell Mobility LTE with fall back to HSPA
- Verizon LTE with fall back to EVDO
- Dual-band CDMA2000 EVDO Rev. A (backward compatible with 1xRTT)
- HSPA
- EDGE/GPRS

Ethernet Interface (10/100 auto-sensing)

- 1x RJ45
- 5x RJ45 (port 5 - WAN/LAN capability)

Serial Interface

- 1x RS32 Serial DB9 115200bps

USB Interface

- 1x USB2.0 mini

IP

- NAT, Port Forwarding, Dynamic DNS, DHCP
- Stateful Inspection Firewall, IP Transparency

LED Status Indicators

- Power, WAN, signal, RS232, Ethernet link and activity

Power Input

- 8-30 Vdc (12 Vdc nominal)

Routing Protocols

- OSPF, BGP, RIP

Environmental

- Operating Temp: -40° to +85°C
- Shock: IEC60068-2-27
- Vibration: IEC60068-2-6
- Humidity: 5 to 95% non-condensing

Dimensions

- SN-6x0x: steel 120 x 96 x 32 mm (4.7" x 3.77" x 1.25"), 453g (1 lb)
- SN-6x21: steel 120 x 96 x 51 mm (4.7" x 3.77" x 2.0"), 500g (1.1 lbs)

Certification

- CE, EMC:FCC, part 15 and Industry Canada, ICES-003
- Hazardous Locations: Class I, Div. 2, Groups A,B,C,D, ISA 12.12.01
- Electrical Safety: UL508/CSA22.2/14 (CUL)

Encapsulation Protocols

- GRE and IPinIP

Tunneling

- VPN: IPsec, SSL, GRE

Clustering

- VRRP

Warranty

- 3 years on design and manufacturing defects

All specifications are subject to change. Contact Sixnet to learn more.

ORDER GUIDE

PART NUMBER	DESCRIPTION
SN-6401	Full router capability, 1 Ethernet port, 1 serial port, EDGE/GPRS
SN-6401EB	Full router capability, 1 Ethernet port, 1 serial port, PoE, EDGE/GPRS
SN-6421	Full router capability, 5 Ethernet ports, 1 serial port, EDGE/GPRS
SN-660x	Full router capability, 1 Ethernet port, 1 serial port, CDMA/EVDO Rev. A
SN-6601EB	Full router capability, 1 Ethernet port, 1 serial port, PoE, CDMA/EVDO Rev. A
SN-6621	Full router capability, 5 Ethernet ports, 1 serial port, CDMA/EVDO Rev. A
SN-670x	Full router capability, 1 Ethernet port, 1 serial port, 4G LTE/3G/2G
SN-6701EB	Full router capability, 1 Ethernet port, 1 serial port, PoE, 4G LTE/3G/2G
SN-6721	Full router capability, 5 Ethernet ports, 1 serial port, 4G LTE/3G/2G
SN-680x	Full router capability, 1 Ethernet port, 1 serial port, HSPA/EDGE/GPRS
SN-6801EB	Full router capability, 1 Ethernet port, 1 serial port, PoE, HSPA/EDGE/GPRS
SN-6821	Full router capability, 5 Ethernet ports, 1 serial port, HSPA/EDGE/GPRS

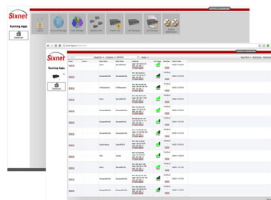
SIXVIEW MANAGER

Powerful Remote Device Management

With SixView Manager's enterprise-class device management features, users have access to:

Remote Administration

- Mass configuration changes and updates
- Remote executable (i.e., reboot)



Remote Monitoring & Reporting of Key Metrics

- Uptime
- Utilization
- Signal strength (RSSI)
- Firmware version, ESN, MDN, IMEI
- IP Address

About Red Lion

As the global experts in communication, monitoring and control for industrial automation, Red Lion has been delivering innovative solutions to customers for forty years. Our award-winning technology enables companies worldwide to gain real-time data visibility that drives productivity. Product brands include Red Lion, Sixnet and N-Tron. With headquarters in York, Pennsylvania, the company has offices across the Americas, Asia-Pacific and Europe. Red Lion is a Spectris company.

For more information, visit www.redlion.net/sixnet, call +1 (518) 877-5173 or email info@redlion.net





www.redlion.net/sixnet

+1 (518) 877-5173 | info@redlion.net

CONNECT. MONITOR. CONTROL.

Looking for pricing, stock, or lifecycle information?

Click below to explore more details on WIN SOURCE:

-  [View SN-6701-AT on WIN SOURCE](#)
-  [Red Lion Controls Information](#)

Optimize Your Supply Chain with WIN SOURCE Solutions

-  Global Sourcing Solution
-  Obsolete Management
-  Cost Control Management
-  Shortage Management
-  Alternative Solution
-  Excess Inventory Management