



**THE DATASHEET OF
OSTHM116080**



1

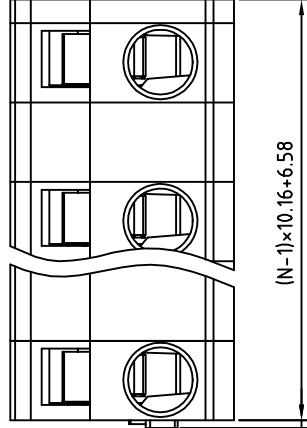
2

3

4

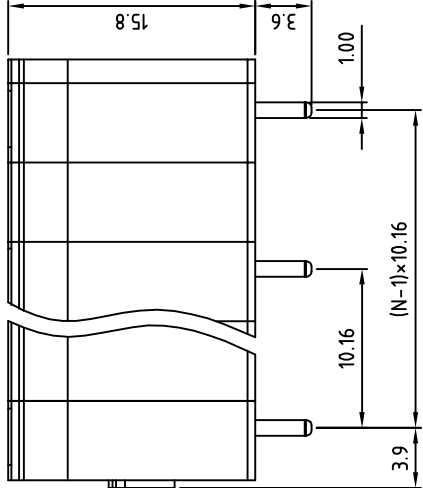
5

SIGN	DATE



0.5

$(N-1) \times 10.16 + 6.58$



15.8

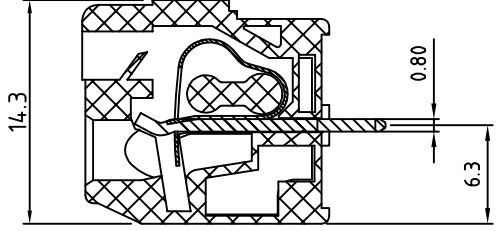
3.6

1.00

$(N-1) \times 10.16$

3.9

N=Number of contacts



14.3

6.3

0.80

Material

- Terminal body (Con)
 - Wire guard: Stainl
 - Surface of solder
 - Insulator (housing):
- Electrical**
- Voltage rating: 250V
 - Current rating: 8A
 - Wire range:
 - Solid wire(AWG): 12
 - Stranded wire(AWG)
 - Wire strip length: 6
 - Withstanding Volta
 - Operating tempera
 - Soldering temperat
 - Safety approval:

RoHS Compliant

PART NUM

OSTH

No. of Poles -
 02: 2 Poles
 :
 :
 12: 12 Poles

1

2

3

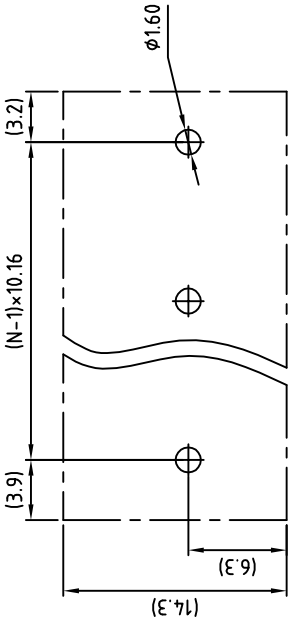
4

5

TITLE	OSTHM 10.16mm series dip solder
PART NO.	OSTHMXX6080
APPROVED	DESIGNED
Shi jun 2006.11.01	Marvin 2006.06.26
CHECKED	DRAWN
Marvin 2006.06.26	Marvin 2006.06.26



THESE DRAWINGS AND SPECIFICATIONS ARE THE PROPERTY OF ON-SHORE TECHNOLOGY, INC. AND SHALL NOT BE REPRODUCED, COPIED OR USED IN ANY MANNER WITHOUT THE PRIOR WRITTEN CONSENT OF ON-SHORE TECHNOLOGY, INC.





P.C.B LAYOUT

OST ON-SHORE

Looking for pricing, stock, or lifecycle information?

Click below to explore more details on WIN SOURCE:

-  [View OSTHM116080 on WIN SOURCE](#)
-  [On Shore Technology Inc. Information](#)

Optimize Your Supply Chain with WIN SOURCE Solutions

-  Global Sourcing Solution
-  Obsolete Management
-  Cost Control Management
-  Shortage Management
-  Alternative Solution
-  Excess Inventory Management