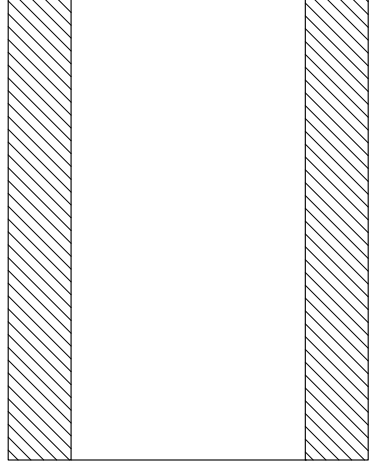
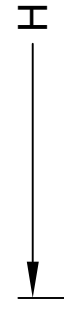
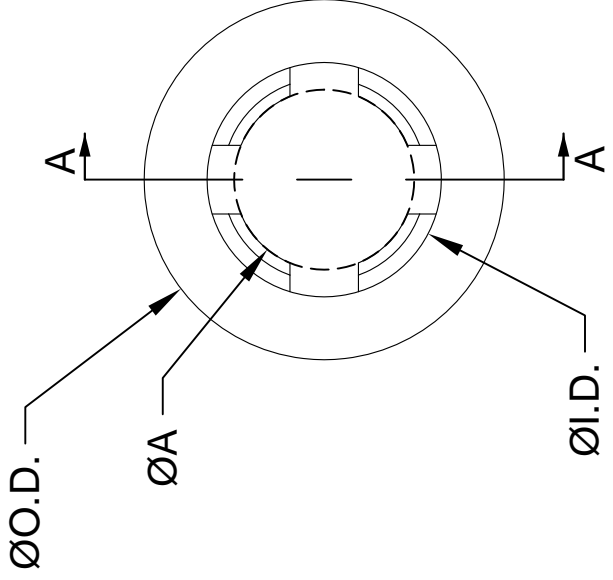


REV.	
A	Engineering Release
B	Engineering Update



SECTION A-A

SEE SHEET #2 & #3
 ORDERING INFORMATION:
 FRS X.X-XXLG

SERIES
 SCREW SIZE IN MM
 HEIGHT IN MM

2. TOLERANCE "H" DIMENSION:

- 0.079 - 0.393 (2.0 - 9.9mm)±0.008(0.2mm)
- 0.394 - 1.101 (10.0 - 27.9mm)±0.012(0.3mm)
- 1.102 - 1.969 (28.0 - 50mm)±0.020(0.5mm)

1. MATERIAL: NYLON 6/6, UL 94V-2, NATURAL.

STANDARD TOLERANCES (UNLESS OTHERWISE SPECIFIED)	
DECIMALS	ANGU
.X ±.1	X°
.XX ±.01	
.XXX ±.005	
DESIGNED:	DATE:
A. Wright	06/3/
CHECKED:	DATE:
B. Oliver	06/3/

REV. _____
 SEE SHEET #1

SERIES P/N	"H" IN (MM)	I.D. IN (MM)	O.D. IN (MM)	"A" IN (MM)	Screw Size
FRS2.8-02LG	0.079 (2)				
FRS2.8-03LG	0.118 (3)				
FRS2.8-04LG	0.157 (4)				
FRS2.8-05LG	0.197 (5)				
FRS2.8-06LG	0.236 (6)				
FRS2.8-07LG	0.276 (7)				
FRS2.8-08LG	0.315 (8)				
FRS2.8-09LG	0.354 (9)				
FRS2.8-10LG	0.394 (10)				
FRS2.8-11LG	0.433 (11)				
FRS2.8-12LG	0.472 (12)				
FRS2.8-13LG	0.512 (13)				
FRS2.8-14LG	0.551 (14)				
FRS2.8-15LG	0.591 (15)				
FRS2.8-16LG	0.630 (16)	0.142 (3.6)	0.217 (5.5)	0.098 (2.5)	4-40 UNC
FRS2.8-17LG	0.669 (17)				
FRS2.8-18LG	0.709 (18)				
FRS2.8-19LG	0.748 (19)				
FRS2.8-20LG	0.787 (20)				
FRS2.8-21LG	0.827 (21)				
FRS2.8-22LG	0.866 (22)				
FRS2.8-23LG	0.906 (23)				
FRS2.8-24LG	0.945 (24)				
FRS2.8-25LG	0.984 (25)				
FRS2.8-26LG	1.024 (26)				
FRS2.8-27LG	1.063 (27)				
FRS2.8-28LG	1.102 (28)				
FRS2.8-29LG	1.142 (29)				
FRS2.8-30LG	1.181 (30)				

SERIES P/N	"H" IN (MM)	I.D. IN (MM)	O.D. IN (MM)
FRS3.0-02LG	0.079 (2)		
FRS3.0-03LG	0.118 (3)		
FRS3.0-04LG	0.157 (4)		
FRS3.0-05LG	0.197 (5)		
FRS3.0-06LG	0.236 (6)		
FRS3.0-07LG	0.276 (7)		
FRS3.0-08LG	0.315 (8)		
FRS3.0-09LG	0.354 (9)		
FRS3.0-10LG	0.394 (10)		
FRS3.0-11LG	0.433 (11)		
FRS3.0-12LG	0.472 (12)		
FRS3.0-13LG	0.512 (13)		
FRS3.0-14LG	0.551 (14)		
FRS3.0-15LG	0.591 (15)		
FRS3.0-16LG	0.630 (16)	0.142 (3.6)	0.217 (5.5)
FRS3.0-17LG	0.669 (17)		
FRS3.0-18LG	0.709 (18)		
FRS3.0-19LG	0.748 (19)		
FRS3.0-20LG	0.787 (20)		
FRS3.0-21LG	0.827 (21)		
FRS3.0-22LG	0.866 (22)		
FRS3.0-23LG	0.906 (23)		
FRS3.0-24LG	0.945 (24)		
FRS3.0-25LG	0.984 (25)		
FRS3.0-26LG	1.024 (26)		
FRS3.0-27LG	1.063 (27)		
FRS3.0-28LG	1.102 (28)		
FRS3.0-29LG	1.142 (29)		
FRS3.0-30LG	1.181 (30)		

STANDARD TOLERANCES
 (UNLESS OTHERWISE SPECIFIED)

DECIMALS	ANGLES
.X ±.1	X°
.XX ±.01	
.XXX ±.005	

DESIGNED: **A. Wright** DATE: **06/3/20**
 CHECKED: **B. Oliver** DATE: **06/3/20**



REV. _____
 SEE SHEET #1

SERIES P/N	"H" IN (MM)	I.D. IN (MM)	O.D. IN (MM)	"A" IN (MM)	Screw Size
FRS3.5-02LG	0.079 (2)				
FRS3.5-03LG	0.118 (3)				
FRS3.5-04LG	0.157 (4)				
FRS3.5-05LG	0.197 (5)				
FRS3.5-06LG	0.236 (6)				
FRS3.5-07LG	0.276 (7)				
FRS3.5-08LG	0.315 (8)				
FRS3.5-09LG	0.354 (9)				
FRS3.5-10LG	0.394 (10)				
FRS3.5-11LG	0.433 (11)				
FRS3.5-12LG	0.472 (12)				
FRS3.5-13LG	0.512 (13)				
FRS3.5-14LG	0.551 (14)				
FRS3.5-15LG	0.591 (15)				
FRS3.5-16LG	0.630 (16)	0.161 (4.1)	0.248 (6.3)	0.124 (3.1)	M3.5
FRS3.5-17LG	0.669 (17)				
FRS3.5-18LG	0.709 (18)				
FRS3.5-19LG	0.748 (19)				
FRS3.5-20LG	0.787 (20)				
FRS3.5-21LG	0.827 (21)				
FRS3.5-22LG	0.866 (22)				
FRS3.5-23LG	0.906 (23)				
FRS3.5-24LG	0.945 (24)				
FRS3.5-25LG	0.984 (25)				
FRS3.5-26LG	1.024 (26)				
FRS3.5-27LG	1.063 (27)				
FRS3.5-28LG	1.102 (28)				
FRS3.5-29LG	1.142 (29)				
FRS3.5-30LG	1.181 (30)				

SERIES P/N	"H" IN (MM)	I.D. IN (MM)	O.D. IN (MM)
FRS4.0-02LG	0.079 (2)		
FRS4.0-03LG	0.118 (3)		
FRS4.0-04LG	0.157 (4)		
FRS4.0-05LG	0.197 (5)		
FRS4.0-06LG	0.236 (6)		
FRS4.0-07LG	0.276 (7)		
FRS4.0-08LG	0.315 (8)		
FRS4.0-09LG	0.354 (9)		
FRS4.0-10LG	0.394 (10)		
FRS4.0-11LG	0.433 (11)		
FRS4.0-12LG	0.472 (12)		
FRS4.0-13LG	0.512 (13)		
FRS4.0-14LG	0.551 (14)		
FRS4.0-15LG	0.591 (15)		
FRS4.0-16LG	0.630 (16)	0.185 (4.7)	0.276 (7)
FRS4.0-17LG	0.669 (17)		
FRS4.0-18LG	0.709 (18)		
FRS4.0-19LG	0.748 (19)		
FRS4.0-20LG	0.787 (20)		
FRS4.0-21LG	0.827 (21)		
FRS4.0-22LG	0.866 (22)		
FRS4.0-23LG	0.906 (23)		
FRS4.0-24LG	0.945 (24)		
FRS4.0-25LG	0.984 (25)		
FRS4.0-26LG	1.024 (26)		
FRS4.0-27LG	1.063 (27)		
FRS4.0-28LG	1.102 (28)		
FRS4.0-29LG	1.142 (29)		
FRS4.0-30LG	1.181 (30)		

STANDARD TOLERANCES
 (UNLESS OTHERWISE SPECIFIED)



DECIMALS	ANGLES
.X ±.1	X°
.XX ±.01	
.XXX ±.005	

DESIGNED: **A. Wright** DATE: **06/3/06**
 CHECKED: **B. Oliver** DATE:



Looking for pricing, stock, or lifecycle information?

Click below to explore more details on WIN SOURCE:

-  [View FRS3.5-23LG on WIN SOURCE](#)
-  [Bivar Inc. Information](#)

Optimize Your Supply Chain with WIN SOURCE Solutions

-  Global Sourcing Solution
-  Obsolete Management
-  Cost Control Management
-  Shortage Management
-  Alternative Solution
-  Excess Inventory Management