



**THE DATASHEET OF
CM1242-07CP**



CM1242-07CP

1-Channel Ultra Small 0201 Package ESD Protection Device in 0201

Description

The CM1242-07CP is a 2-bump ESD protection device in 0201 form factor. It is fully compliant with IEC 61000-4-2. The CM1242-07CP is also RoHS II compliant and has a pure tin finish.

Features

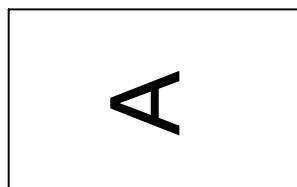
- Low Capacitance < 5.8 pF
- Low Clamping Voltage
- Small Body Outline Dimensions: 0.60 mm x 0.30 mm
- Low Body Height: 0.275 mm
- Stand-off Voltage: ± 5.0 V
- Low Dynamic Resistance: < 1.5 Ω
- IEC61000-4-2 Level 4 ESD Protection
- These Devices are Pb-Free, Halogen Free/BFR Free and are RoHS Compliant

Table 1. PIN DESCRIPTIONS

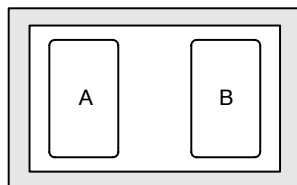
Pin	Description
A	ESD Channel Pin 1
B	ESD Channel Pin 2

PACKAGE / PINOUT DIAGRAMS

Top View
(Bumps Down)



Bottom View
(Bumps Up)



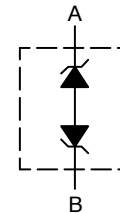
ON Semiconductor®

<http://onsemi.com>

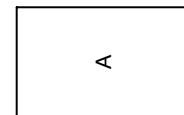


**WLCSP2
CP SUFFIX
CASE 567AV**

BLOCK DIAGRAM



MARKING DIAGRAM



A = Specific Device Code

ORDERING INFORMATION

Device	Package	Shipping
CM1242-07CP	(Pb-Free)	10,000/Tape & Reel

†For information on tape and reel specifications, including part orientation and tape sizes, please refer to our Tape and Reel Packaging Specification Brochure, BRD8011/D.

CM1242-07CP

SPECIFICATIONS

Table 2. STANDARD OPERATING CONDITIONS

Parameter	Rating	Units
Storage Temperature Range	-55 to +150	°C
Operating Temperature Range	-40 to +85	°C
Maximum Input Voltage	±5.5	V

Table 3. ELECTRICAL OPERATING CHARACTERISTICS (Note 1)

Symbol	Parameter	Conditions	Min	Typ	Max	Units
V_B	Breakdown Voltage	$I_F = +1.0 \text{ mA}$ $I_F = -1.0 \text{ mA}$	6.0 -9.0	7.6 -7.6	9.0 -6.0	V
I_{LEAK}	Channel Leakage Current	$V_{IN} = \pm 5.0 \text{ V}$		±1.0	±100	nA
C_{IN}	Channel Input Capacitance	At 1 MHz, $V_{IN} = 0 \text{ V}$	4.6	5.8	7.0	pF
V_{ESD}	ESD Protection Peak Discharge Voltage at any channel input a) Contact Discharge per IEC 61000-4-2 standard b) Air Discharge per IEC 61000-4-2 standard	(Note 2)	±17 ±17			kV
V_{CL}	Channel Clamp Voltage Positive Transients Negative Transients	$I_{PP} = 1 \text{ A}$, $t_p = 8/20 \mu\text{s}$		+9.8 -9.8		V
R_{DYN}	Dynamic Resistance Positive Transients Negative Transients	$I_{PP} = 1 \text{ A}$, $t_p = 8/20 \mu\text{s}$		1.5 1.5		Ω

- $T_A = 25^\circ\text{C}$ unless otherwise specified.
- Standard IEC 61000-4-2 with $C_{Discharge} = 150 \text{ pF}$, $R_{Discharge} = 330 \Omega$.

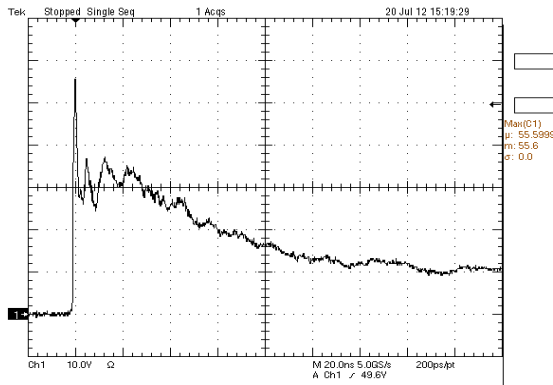


Figure 1. ESD Clamping Voltage Screenshot Positive 8 kV Contact per IEC61000-4-2

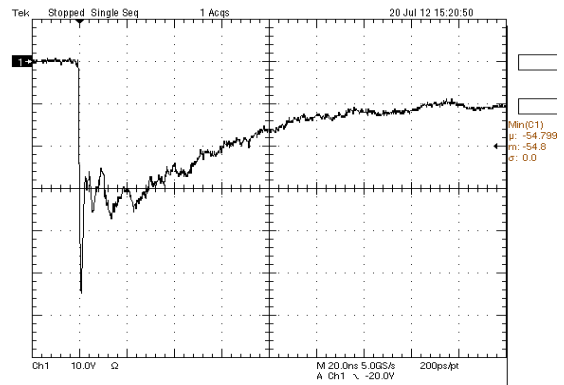


Figure 2. ESD Clamping Voltage Screenshot Negative 8 kV Contact per IEC61000-4-2

CM1242-07CP

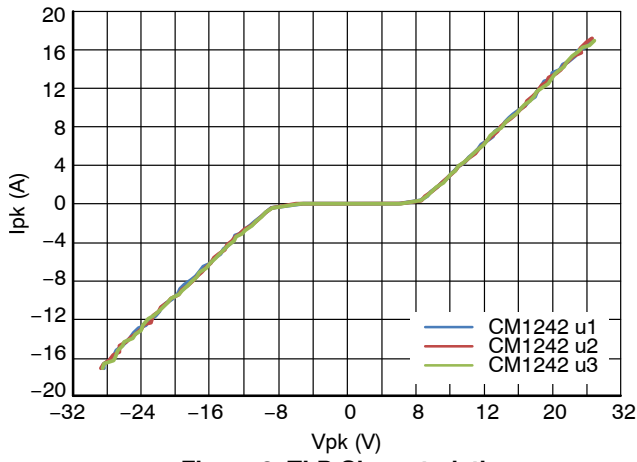


Figure 3. TLP Characteristics

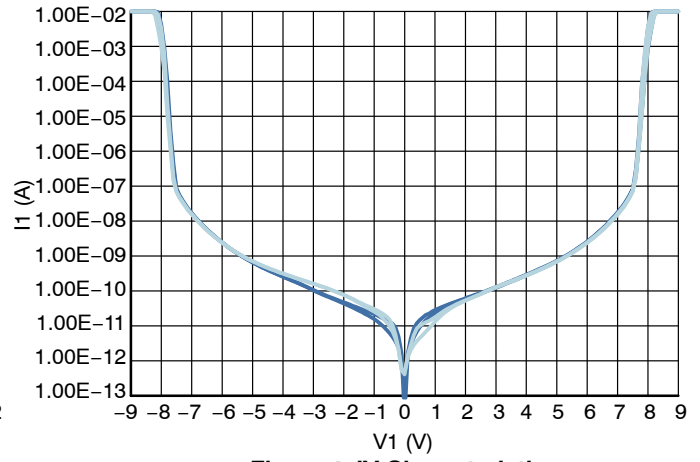


Figure 4. IV Characteristics

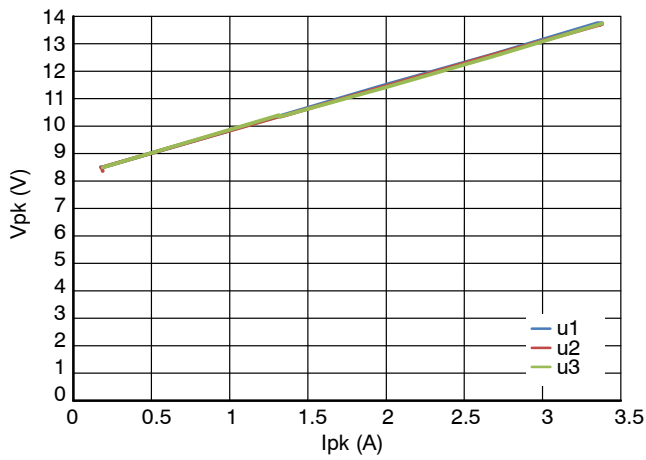


Figure 5. 80 x 20 Surge Characteristics

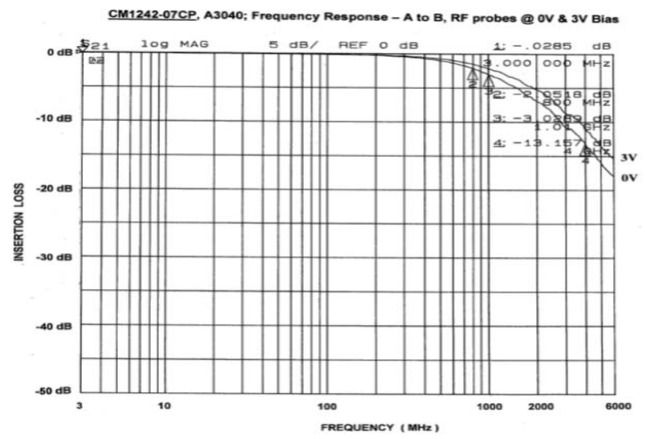


Figure 6. Typical Insertion Loss (S21)

CM1242-07CP

MECHANICAL SPECIFICATIONS

CM1242-07CP Mechanical Specifications

The CM1242-07CP is supplied in a 2-bump custom package. Dimensions are presented below.

Table 4. TAPE AND REEL SPECIFICATIONS

Part Number	Chip Size (mm)	Pocket Size (mm) $B_0 \times A_0 \times K_0$	Tape Width W	Reel Diameter	Qty per Reel	P_0	P_1
CM1242-07CP	0.60 X 0.30 X 0.275	0.67 X 0.37 X 0.35	8 mm	178 mm (7")	10,000	4 mm	2 mm

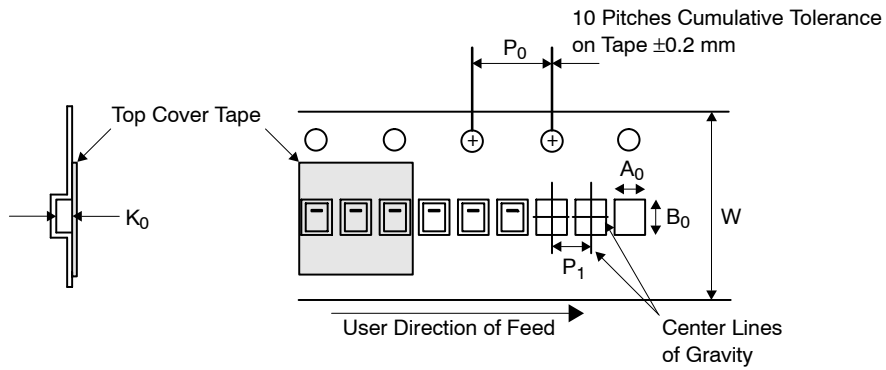


Figure 7. Tape and Reel Mechanical Data

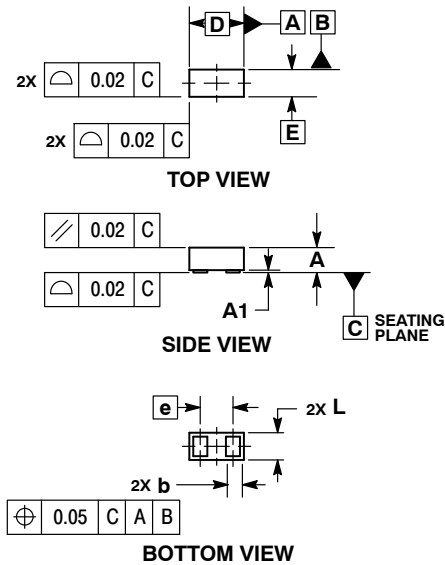
CM1242-07CP Board Level Application.

Refer to Application Note AND8398/D – Board Level Application Note for 0201 DSN2 Package.

CM1242-07CP

PACKAGE DIMENSIONS

WLCSP2, 0.6x0.3
CASE 567AV
ISSUE O

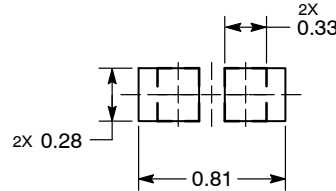


NOTES:

1. DIMENSIONING AND TOLERANCING PER ASME Y14.5M, 1994.
2. CONTROLLING DIMENSION: MILLIMETERS.

MILLIMETERS		
DIM	MIN	MAX
A	0.25	0.30
A1	0.00	0.05
b	0.14	0.17
D	0.60 BSC	
E	0.30 BSC	
e	0.36 BSC	
L	0.19	0.24

RECOMMENDED SOLDER FOOTPRINT*



DIMENSIONS: MILLIMETERS

*For additional information on our Pb-Free strategy and soldering details, please download the ON Semiconductor Soldering and Mounting Techniques Reference Manual, SOLDERRM/D.

ON Semiconductor and are registered trademarks of Semiconductor Components Industries, LLC (SCILLC). SCILLC owns the rights to a number of patents, trademarks, copyrights, trade secrets, and other intellectual property. A listing of SCILLC's product/patent coverage may be accessed at www.onsemi.com/site/pdf/Patent-Marking.pdf. SCILLC reserves the right to make changes without further notice to any products herein. SCILLC makes no warranty, representation or guarantee regarding the suitability of its products for any particular purpose, nor does SCILLC assume any liability arising out of the application or use of any product or circuit, and specifically disclaims any and all liability, including without limitation special, consequential or incidental damages. "Typical" parameters which may be provided in SCILLC data sheets and/or specifications can and do vary in different applications and actual performance may vary over time. All operating parameters, including "Typicals" must be validated for each customer application by customer's technical experts. SCILLC does not convey any license under its patent rights nor the rights of others. SCILLC products are not designed, intended, or authorized for use as components in systems intended for surgical implant into the body, or other applications intended to support or sustain life, or for any other application in which the failure of the SCILLC product could create a situation where personal injury or death may occur. Should Buyer purchase or use SCILLC products for any such unintended or unauthorized application, Buyer shall indemnify and hold SCILLC and its officers, employees, subsidiaries, affiliates, and distributors harmless against all claims, costs, damages, and expenses, and reasonable attorney fees arising out of, directly or indirectly, any claim of personal injury or death associated with such unintended or unauthorized use, even if such claim alleges that SCILLC was negligent regarding the design or manufacture of the part. SCILLC is an Equal Opportunity/Affirmative Action Employer. This literature is subject to all applicable copyright laws and is not for resale in any manner.

PUBLICATION ORDERING INFORMATION

LITERATURE FULFILLMENT:
Literature Distribution Center for ON Semiconductor
P.O. Box 5163, Denver, Colorado 80217 USA
Phone: 303-675-2175 or 800-344-3860 Toll Free USA/Canada
Fax: 303-675-2176 or 800-344-3867 Toll Free USA/Canada
Email: orderlit@onsemi.com

N. American Technical Support: 800-282-9855 Toll Free
USA/Canada
Europe, Middle East and Africa Technical Support:
Phone: 421 33 790 2910
Japan Customer Focus Center
Phone: 81-3-5817-1050

ON Semiconductor Website: www.onsemi.com
Order Literature: <http://www.onsemi.com/orderlit>
For additional information, please contact your local Sales Representative

Looking for pricing, stock, or lifecycle information?

Click below to explore more details on WIN SOURCE:

- ⊖ [View CM1242-07CP](#) on WIN SOURCE
- ⊖ [ON Semiconductor](#) Information

Optimize Your Supply Chain with WIN SOURCE Solutions

- ✓ Global Sourcing Solution
- ✓ Obsolete Management
- ✓ Cost Control Management
- ✓ Shortage Management
- ✓ Alternative Solution
- ✓ Excess Inventory Management