

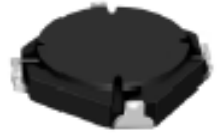


**THE DATASHEET OF
CLS4D11-4R7**

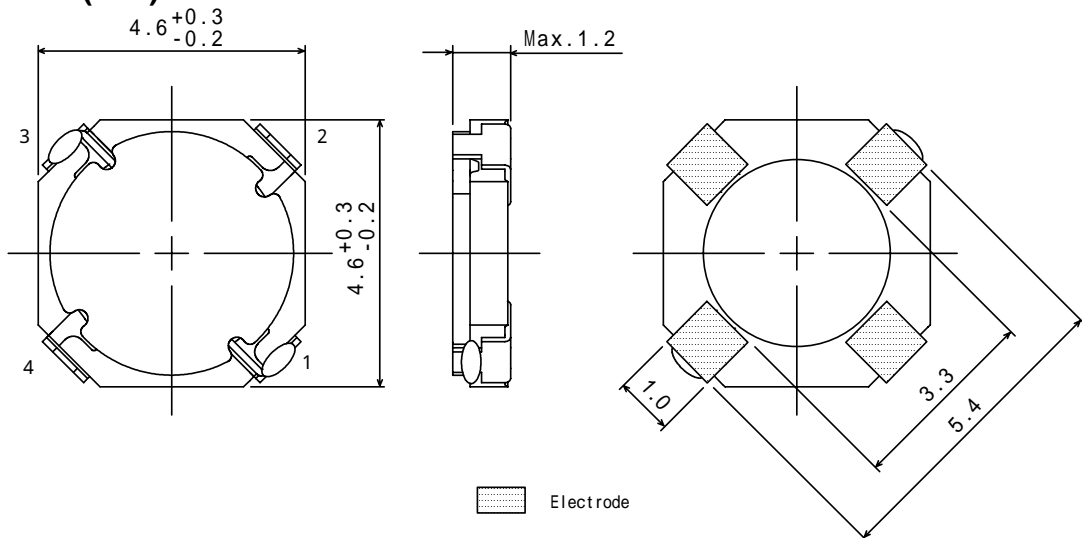
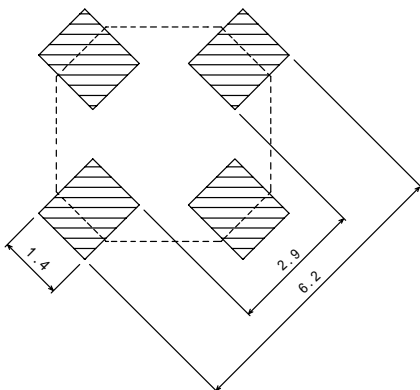
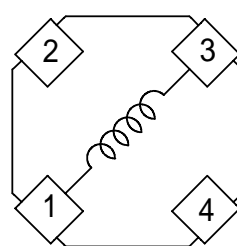
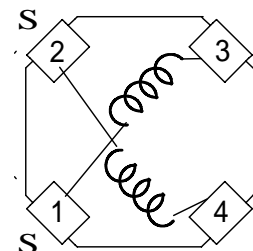


Type: CLS4D11
Product Description

- 4.9 × 4.9mm Max.(L × W), 1.2mm Max. Height.
- 4 Terminal pins' type gives a flexible design as inductors or transformers (SEPIC,ZETA circuit).
- Custom design is available.


Feature

- Max. Operating frequency 1MHz, Max.
- Ideally used in portable devices such as Mobilephone,DSC/DVC,MP3,PDA, etc as DC-DC Converter inductors, specially suitable for White LED drive.
- It is possible to output high voltage and get sufficient accuracy which is hard to obtain with an ordinary inductor.
- RoHS Compliance

Dimensions (mm)

Land Pattern (mm)

Schematics (Bottom)

For Inductor

For 2 in 1 Transformer

Type: CLS4D11
Specification (For Inductor)

| Part No. | Stamp | Inductance [within] (at 100kHz) | D.C.R.(m) Max.(Typ.) (at 20) | Rated current (mA) 1 |
|----------------------------|-------|---|--------------------------------------|-------------------------|
| CLS4D11 - 3R3N | 3R3 | 3.3 μ H \pm 30% | 120(95) | 1000 |
| CLS4D11 - 4R7N | 4R7 | 4.7 μ H \pm 30% | 180(140) | 800 |
| CLS4D11 - 6R8N | 6R8 | 6.8 μ H \pm 30% | 220(170) | 700 |
| CLS4D11 - 10 \emptyset N | 100 | 10 μ H \pm 30% | 310(240) | 600 |
| CLS4D11 - 15 \emptyset N | 150 | 15 μ H \pm 30% | 480(370) | 500 |
| CLS4D11 - 22 \emptyset N | 220 | 22 μ H \pm 30% | 710(550) | 400 |
| CLS4D11 - 33 \emptyset N | 330 | 33 μ H \pm 30% | 1100(870) | 300 |

Description of part name

CLS4D11 - 3R3N

| | | |
|--|---|--------------|
| | B | Box |
| | C | Carrier Tape |

1. Rated current: The D.C. current at which the inductance decreases to 65% of it's nominal value or when $t=40$, whichever is lower($T_a=20$).



Specification (For 2 in 1 Transformer)

| Sample No. | Inductance (at 100kHz) | D.C.R.(m) Max. (at 20) | Rated current (mA) |
|------------|---------------------------|-----------------------------|-----------------------|
| 5365-T007 | 4.7 μ H \pm 30% | 380 | 500 |

Rated current: The DC current at which the inductance decreases to 90 % of it's initial value or when $t=40$, whichever is lower($T_a=20$).

Looking for pricing, stock, or lifecycle information?

Click below to explore more details on WIN SOURCE:

-  [View CLS4D11-4R7 on WIN SOURCE](#)
-  [Sumida America Components Inc. Information](#)

Optimize Your Supply Chain with WIN SOURCE Solutions

-  Global Sourcing Solution
-  Obsolete Management
-  Cost Control Management
-  Shortage Management
-  Alternative Solution
-  Excess Inventory Management