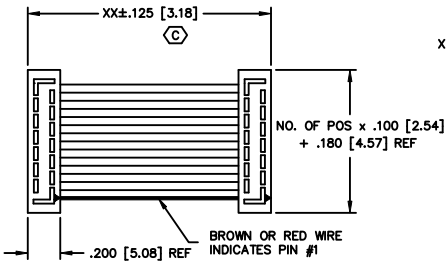




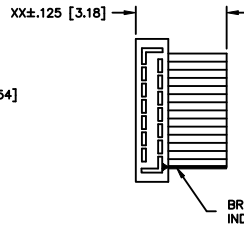
THE DATASHEET OF HCMD-25-02



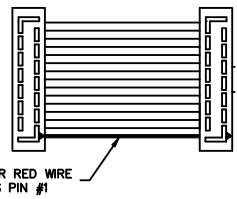
-D (DOUBLE END)
FIGURE 1



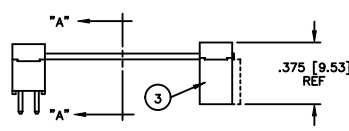
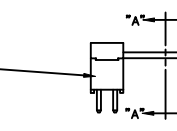
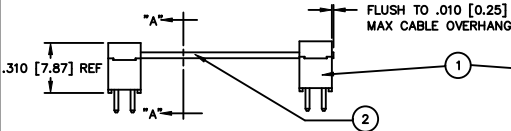
-S (SINGLE END)
SAME AS FIG. 1 UNLESS OTHERWISE SHOWN



-T (TRANSFER END)
SEE NOTE 3
SAME AS FIG. 1 UNLESS OTHERWISE SHOWN



NOTE: SUB-ASSEMBLY 1 OR 3 TO BE PRESSED TOGETHER WITH NO GAPS BETWEEN CABLE & BODIES.



HCMD-XX-X-XX.XX-XX-XXX-XXX

NO. OF POSITIONS PER ROW: 02 - 36 (STANDARD COLOR-CODED CABLE N/A FOR 32 AND 36 POSITIONS. SEE -G OPTION.) (POSITIONS 21-36: EXISTING CUSTOMERS ONLY)

END ASSEMBLY: -S: SINGLE END, -D: DOUBLE END, -T: TRANSFER END

ASSEMBLED LENGTH (2 INCH MINIMUM)

LEAD STYLE: -01: (SEE TABLE 1), -02: (SEE TABLE 1)

OPTION # 1 (SEE OPTIONS BELOW AND SHT 2)

OPTION # 2 (SEE OPTIONS BELOW AND SHT 2)

UNLESS OTHERWISE NOTED TOLERANCES ARE: ONE PLACE DECIMALS ±.1, TWO PLACE DECIMALS ±.01, THREE PLACE DECIMALS ±.005, FOUR PLACE DECIMALS ±.0020, ANGLES ±1'

TITLE: .100 C.L. MOLD TO POS. DOUBLE ROW, MALE ASSEMBLY

DWG NO: HCMD-XX-X-XX.XX-XX-XXX-XXX SHEET 1 OF 2

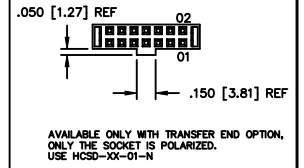
PLATING

-T = .000150 BRIGHT ACID TIN ON ENTIRE CONTACT. (USED ONLY WITH FEMALE STRIP OF A -T END OPTION - USE HCSD-XX-01-T.)

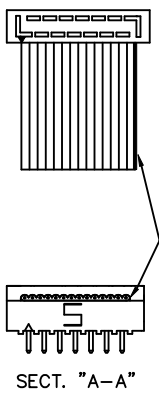
-S = .000010 Au. ON TAIL AREA WITH THE BALANCE OF .000150 BRIGHT ACID TIN - USE HCMD-XX-XX-S. (NOT TO BE USED WITH FEMALE STRIP OF A -T END OPTION.)

(STANDARD PLATING IS .000150 BRIGHT ACID TIN OVER ENTIRE TERMINAL - USE HCMD-XX-XX-T. FOR A -T OPTION, STANDARD PLATING FOR THE FEMALE END IS .000150 BRIGHT ACID TIN, EXCEPT CONTACT AREA IS .000010 Au. - USE HCSD-XX-01-SX.)

-N NOTCH POLARIZATION



-RW REVERSE WIRING

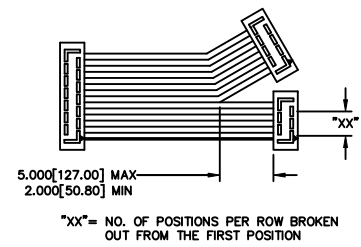


-G GRAY CABLE

SUBSTITUTE GRAY CABLE FOR STANDARD COLOR CODED CABLE
USE: CB-XX-28-7/36-050-G

NOTE: USE GRAY CABLE FOR -32 AND -36 POSITIONS.

-B"XX" BREAKOUT OPTION



-ST"X" STRIPPED & TINNED

| "X" | LENGTH |
|-----|--------------|
| 8 | .125 [3.18] |
| 4 | .250 [6.35] |
| 3 | .375 [9.53] |
| 2 | .500 [12.70] |

NOTE:
1a. CONDUCTORS SHALL BE CONSISTENT IN APPEARANCE. SOLDER MUST MAINTAIN CABLE STRANDED WITHIN THE MAX DIA. TOLERANCE.
2a. USE 60/40 TIN/LEAD SOLDER ONLY.
3a. NOT AVAILABLE IN 28 POSITIONS AND UP.

LENGTH ±.0625 [1.588]
.030 [.76] MAX DIA (AFTER STRIPPED & TINNED)
SEE NOTE 1a.
.0625 [1.588] MAX. FLAT WIRE ALLOWED

-P"XX" POLARIZED MATING

XX = POSITION NO.
INSERT POLARIZING KEY PART NO. PK-06-N INTO SPECIFIED POSITION -XX

NOTE: OPTION ONLY AVAILABLE ON FEMALE END OF THE -T (TRANSFER END) OPTION. THE POLARIZED POSITION WILL HAVE THE SAME ELECTRICAL POSITION FROM THE BROWN WIRE FIRST POSITION INDICATOR.

TABLE 1

| LEAD STYLE | "A" | 1 | 2 | 3 (-T END ONLY) |
|------------|-------------|--------------|---------------------|-----------------|
| -01 | .120 [3.05] | HCMD-XX-01-X | CB-XX-28-7/36-050-C | HCSD-XX-01-X |
| -02 | .230 [5.84] | HCMD-XX-02-X | CB-XX-28-7/36-050-C | HCSD-XX-01-X |

SPECIFY NO. OF POS. IN PART CALLOUT -XX

NOTES:

- IF OPTION IS SPECIFIED WITH -T END ASSEMBLY, SUB-ASSEMBLIES B & C WILL BE HCSD-XX-01-X
- IF OPTION IS SPECIFIED WITH -T END ASSEMBLY, SUB-ASSEMBLIES B & C WILL BE HCSS-XX-01-X
- HIDDEN LINES ARE USED TO SHOW POLARIZATION WHEN USING -T-N OPTION
- Ⓢ REPRESENTS CRITICAL DIMENSIONS FOR STATISTICAL PROCESS CONTROL
- ALL ASSEMBLIES TO BE 100% ELECTRICALLY TESTED FOR SHORTS AND OPENS.
- ALL ASSEMBLIES TO BE 100% HI-POT TESTED AT 1000V.
- WIRE: 28 AWG, 7/36, STRANDED, TINNED WITH PVC INSULATOR.
- FOR -R OR -RW OPTION, CABLE RIB ORIENTATION CAN BE EITHER TOWARDS OR AWAY FROM THE CAP.
- FOR -STX OPTION PACKAGE USING SKIN PACKAGING PER THE PACKAGING MANUAL. FOR ALL OTHER OPTIONS FOLLOW THE FLOWCHART IN THE THE FLOWCHART IN THE PACKAGING MANUAL FOR IDC CABLES.

PROPRIETARY NOTE: THE INFORMATION CONTAINED HEREIN IS THE PROPERTY OF SAMTEC AND IS UNCLASSIFIED EXCEPT WHERE SHOWN OTHERWISE.

HCMD-XX-X-XX.XX-XX-XXX-XXX

520 PARK EAST BLVD. NEW ALBANY, INDIANA 47150
PHONE (812) 944-8733 P.O. BOX 1147
CODE 55322

MADE BY: KOLB B-3-90

HCMD-XX-X-XX.XX-XX-XXX-XXX SHEET 1 OF 2

Looking for pricing, stock, or lifecycle information?

Click below to explore more details on WIN SOURCE:

 [View HCMD-25-02 on WIN SOURCE](#)

 [Samtec Inc. Information](#)

Optimize Your Supply Chain with WIN SOURCE Solutions

-  Global Sourcing Solution
-  Obsolete Management
-  Cost Control Management
-  Shortage Management
-  Alternative Solution
-  Excess Inventory Management