



**THE DATASHEET OF
SP-2618**





soberton inc.

SP DYNAMIC SPEAKER UNIT

Acoustic Product Specification

Product Number: SP-2618



Release | Revision: B/2018

CONTENTS

This document contains the technical specifications for the dynamic speaker unit.

Page 1

Speaker Electroacoustic Characteristics

General Specifications

Page 2

Reliability Tests

Page 3

Measuring Method (Speaker Mode)

Standard Test Condition of Speakers

Page 4

Frequency Response Curve

Page 5

Dimensions

Page 6

Packing

Dynamic Speaker Electroacoustic Characteristics

Sound Pressure Level

91±3dB SPL @0.8, 1.0, 1.2 and 1.5KHz in Average

Measuring Condition: 0.8W (Sine wave) 10cm measured with baffle shown in Fig.1

Frequency Response Curve

As shown in Figure 2

Response Frequency

650±20%Hz @ 1V (Without Baffle)

Input Power (Nominal and Maximum)

Rated Noise Power 0.8W

Short Term Max Power: 1.0W must be normal at a white noise (F0 ~20KHz) for one minute

Operation Test

Must be free audible noise (buzzes and rattles)

(300 ~ 6KHz frequency range, input level up to 2.53Vrms)

Distortion

Less than 10% @1KHz, 10cm, 0.8W

Polarity

Diaphragm shall be move forward when applies a positive DC. Current to the "+", the red wire is the "+".

General Specifications

Operating Temperature Range

-30°C~+70°C

Standard Test Conditions

Temperature 17°C ~ 25°C

Relative Humidity 45% ~ 80% (RH)

AC Impedance

8±15%Ω(@2KHz 1V without baffle).

Dimension

26.0 x 18.0 x H3.8mm

IP Level

IP50



soberton inc.

SP DYNAMIC SPEAKER UNIT

Acoustic Product Specification

Product Number: SP-2618



Release | Revision: B/2018

CONTENTS

This document contains the technical specifications for the dynamic speaker unit.

Page 1

Speaker Electroacoustic Characteristics

General Specifications

Page 2

Reliability Tests

Page 3

Measuring Method (Speaker Mode)

Standard Test Condition of Speakers

Page 4

Frequency Response Curve

Page 5

Dimensions

Page 6

Packing

Reliability Tests

The sound pressure as specified will neither deviate more than $\pm 3\text{dB}$ from the initial value, nor have any significant damage after any of following testing.

High Temperature Test

High Temperature $+85\pm 2^\circ\text{C}$

Duration 96 hours

Low Temperature Test

Low Temperature $-40\pm 2^\circ\text{C}$

Duration 96 hours

Heat Shock Test

High Temperature $+85\pm 2^\circ\text{C}$

Low Temperature $-40\pm 2^\circ\text{C}$

Changeover time < 30 seconds

Duration 1 hour

Cycle 100

Humidity Test

Temperature $+40\pm 2^\circ\text{C}$

Relative Humidity 90%~95%

Duration 96 hours

Temperature Cycle Test

Temperature -40°C $+85^\circ\text{C}$

Duration 45 minutes 45 minutes

Temperature gradient $1 \sim 3^\circ\text{C}/\text{min}$

Cycle 25

Drop Test

Mounted with dummy set mass: 100 g

Height 1.5 m

Cycle 6 (1 each plain) Onto the concrete board

Load Test

Speaker mode: White noise (EIA filter) for 96 hours @ 0.8W input power



soberton inc.

SP DYNAMIC SPEAKER UNIT

Acoustic Product Specification

Product Number: SP-2618



Release | Revision: B/2018

CONTENTS

This document contains the technical specifications for the dynamic speaker unit.

Page 1

Speaker Electroacoustic Characteristics

General Specifications

Page 2

Reliability Tests

Page 3

Measuring Method (Speaker Mode)

Standard Test Condition of Speakers

Page 4

Frequency Response Curve

Page 5

Dimensions

Page 6

Packing

Measuring Method (Speaker Mode)

Standard Test Condition

Temperature 15 ~ 35°C

Relative humidity 45% ~ 85%

Atmospheric pressure 86KPa ~ 106KPa

Standard Test Fixture

Input Power 0.8W

Zero Level -dB

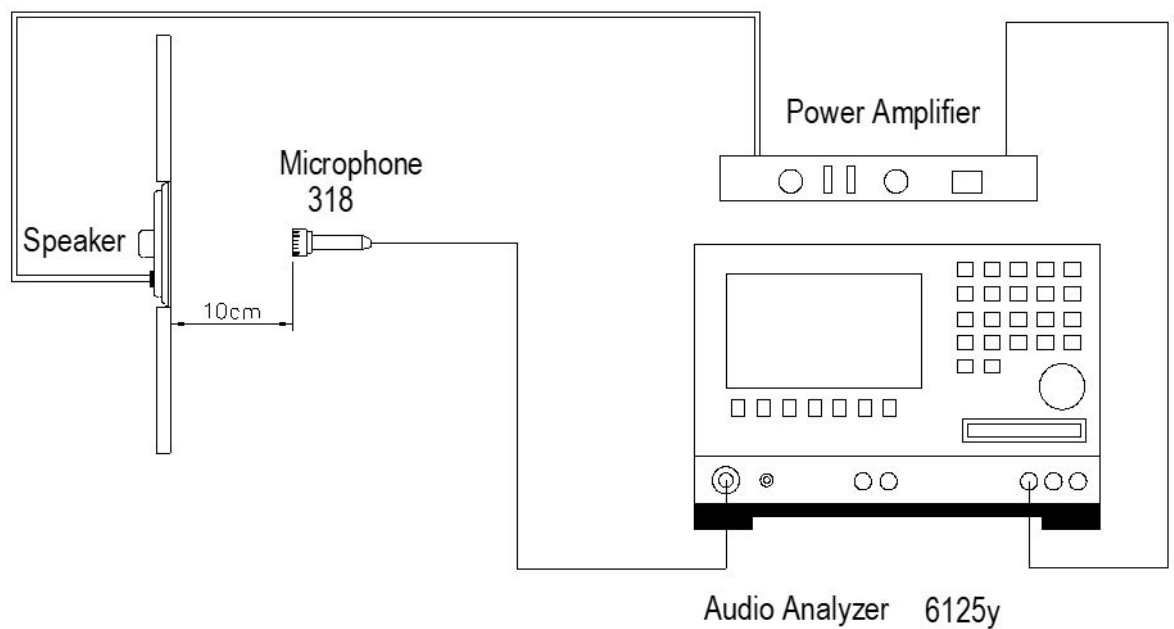
Mode TSR

Potentiometer Range 50dB

Sweep Time 0.5sec

Standard Test Condition of Speaker (Fig. 1)

Standard test condition of speaker





soberton inc.

SP DYNAMIC SPEAKER UNIT

Acoustic Product Specification

Product Number: SP-2618



Release | Revision: B/2018

CONTENTS

This document contains the technical specifications for the dynamic speaker unit.

Page 1

Speaker Electroacoustic Characteristics

General Specifications

Page 2

Reliability Tests

Page 3

Measuring Method (Speaker Mode)

Standard Test Condition of Speakers

Page 4

Frequency Response Curve

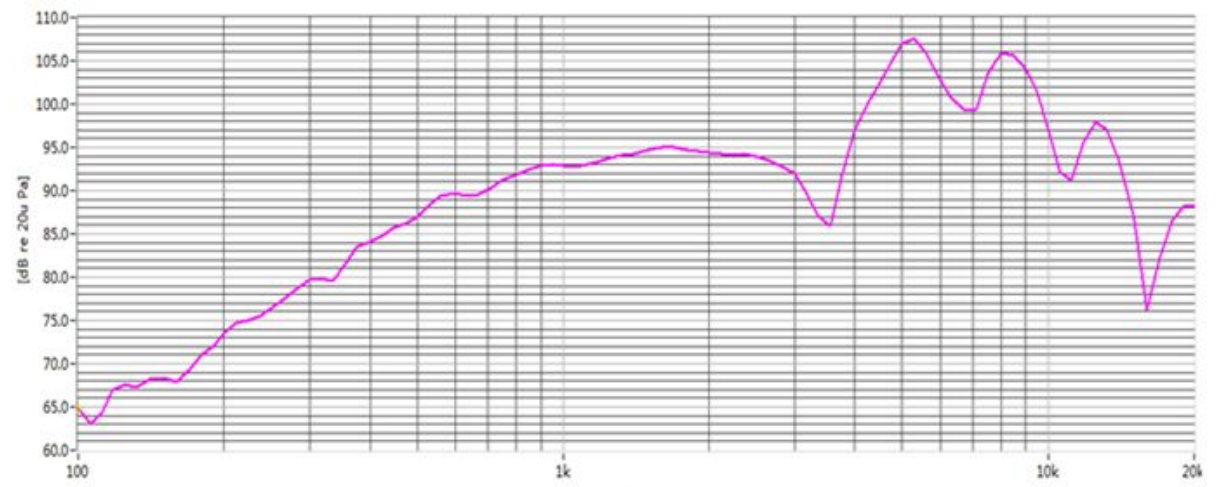
Page 5

Dimensions

Page 6

Packing

Frequency Response Curve (Fig. 2)





soberton inc.

SP DYNAMIC SPEAKER UNIT

Acoustic Product Specification

Product Number: SP-2618



Release | Revision: B/2018

CONTENTS

This document contains the technical specifications for the dynamic speaker unit.

Page 1

Speaker Electroacoustic Characteristics

General Specifications

Page 2

Reliability Tests

Page 3

Measuring Method (Speaker Mode)

Standard Test Condition of Speakers

Page 4

Frequency Response Curve

Page 5

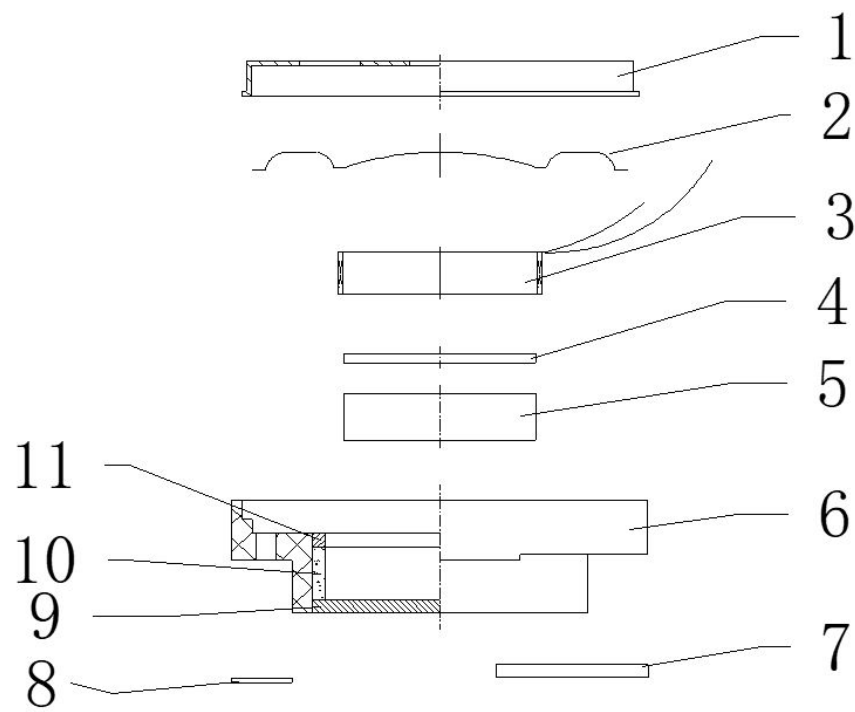
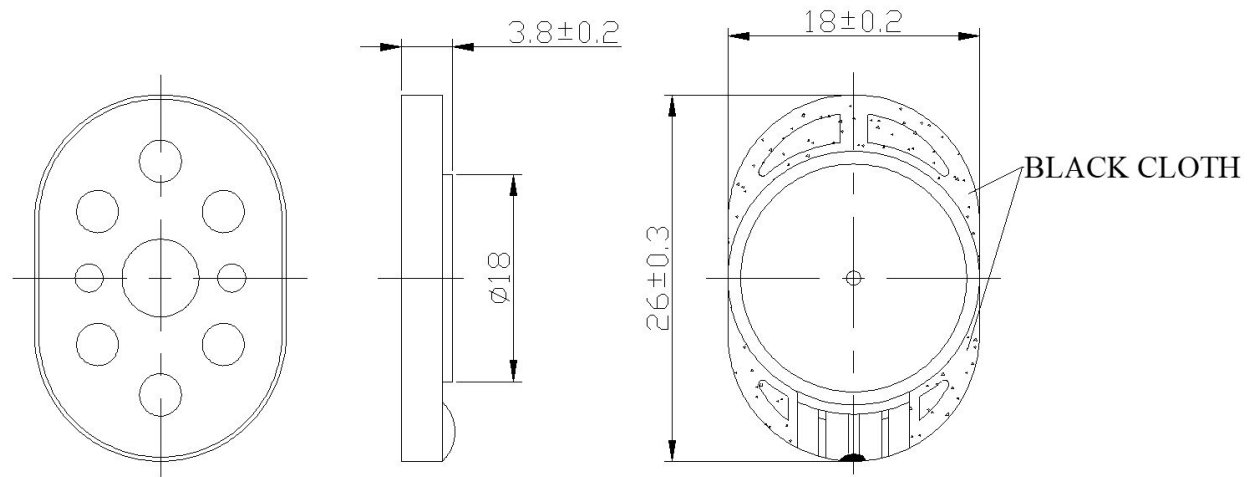
Dimensions

Page 6

Packing

Dimensions

Tolerance: ± 0.5 (unit: mm)



| No. | Part Name | Material | Quantity |
|-----|----------------|-------------------|----------|
| 1 | Cap | SUS 201 | 1 |
| 2 | Diaphragm | PEN | 1 |
| 3 | Voice Coil | Cu | 1 |
| 4 | Plate 1 | SPCC | 1 |
| 5 | Main Magnet | Nd Fe B | 1 |
| 6 | Frame | PBT+SPCC+ Nd Fe B | 1 |
| 7 | PCB | FR-4 | 1 |
| 8 | Silk Screen 1 | Adhesive | 1 |
| 9 | Plate 2 | SPCC | 1 |
| 10 | Minor Magnet 2 | Nd Fe B | 1 |
| 11 | Plate 3 | SPCC | 1 |



soberton inc.

SP DYNAMIC SPEAKER UNIT

Acoustic Product Specification

Product Number: SP-2618



Release | Revision: B/2018

CONTENTS

This document contains the technical specifications for the dynamic speaker unit.

Page 1

Speaker Electroacoustic Characteristics

General Specifications

Page 2

Reliability Tests

Page 3

Measuring Method (Speaker Mode)

Standard Test Condition of Speakers

Page 4

Frequency Response Curve

Page 5

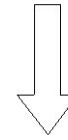
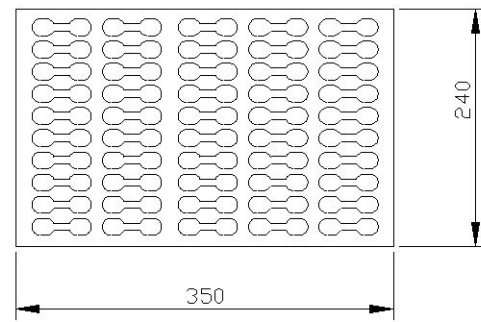
Dimensions

Page 6

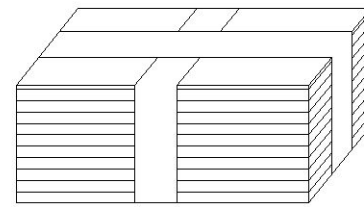
Packing

Packing

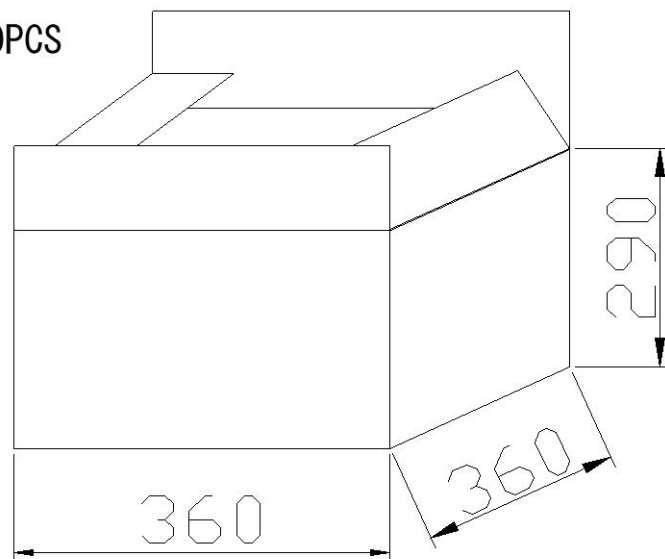
100PCS



100 × 10 = 1000PCS



1000 × 2 = 2000PCS



Looking for pricing, stock, or lifecycle information?

Click below to explore more details on WIN SOURCE:

[View SP-2618 on WIN SOURCE](#)

[Soberton Inc. Information](#)

Optimize Your Supply Chain with WIN SOURCE Solutions

- ✓ Global Sourcing Solution
- ✓ Obsolete Management
- ✓ Cost Control Management
- ✓ Shortage Management
- ✓ Alternative Solution
- ✓ Excess Inventory Management