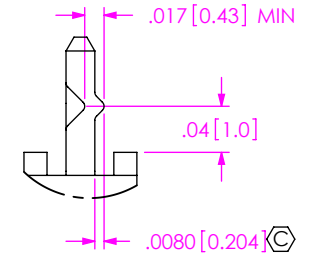
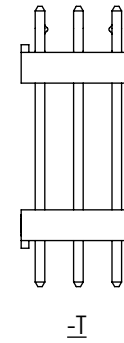
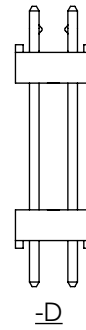
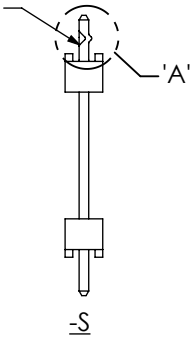




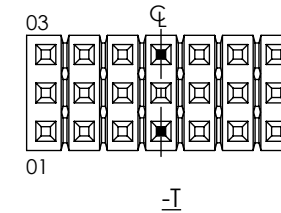
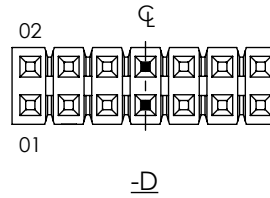
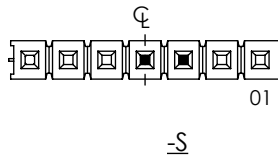
**THE DATASHEET OF
ZW-15-14-H-D-970-440**



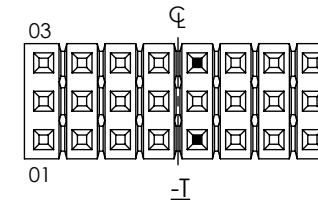
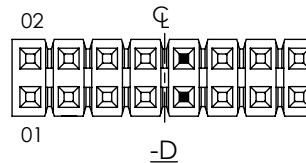
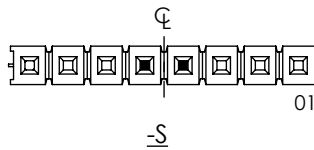
CRIMP SHORTER TAIL
(OPPOSITE CONTACT AREA)



DETAIL 'A'
SCALE 6 : 1



■ = CRIMP LOCATION
FOR -S, CRIMP CENTER POSITION & PIN CLOSEST TO PIN 1
ODD POSITIONS



■ = CRIMP LOCATION
FOR -S, TWO CENTER MOST PINS TO BE CRIMPED
EVEN POSITIONS

FIG 2
-LL: LOCKING LEAD
(SAME AS FIG 1, DIFFERENT AS SHOWN)

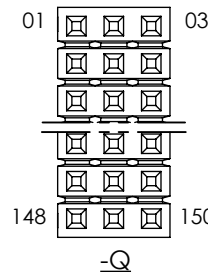
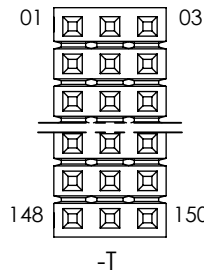
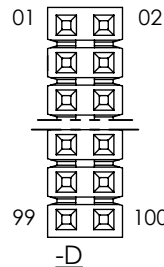
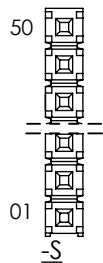


FIG 3

NUMBER OF POSITIONS WITH .330, .110, OR ZW TAIL DOWN

PROPRIETARY NOTE
THIS DOCUMENT CONTAINS CONFIDENTIAL AND PROPRIETARY INFORMATION AND ALL DESIGN, MANUFACTURING, REPRODUCTION, USE, PATENT RIGHTS AND SALES RIGHTS ARE EXPRESSLY RESERVED BY SAMTEC, INC. THIS DOCUMENT SHALL NOT BE DISCLOSED, IN WHOLE OR PART, TO ANY UNAUTHORIZED PERSON OR ENTITY NOR REPRODUCED, TRANSFERRED OR INCORPORATED IN ANY OTHER PROJECT IN ANY MANNER WITHOUT THE EXPRESS WRITTEN CONSENT OF SAMTEC, INC.



520 PARK EAST BLVD, NEW ALBANY, IN 47150
PHONE: 812-944-6733 FAX: 812-948-5047
e-Mail info@SAMTEC.com code 55322

DO NOT SCALE DRAWING

SHEET SCALE: 2:1



DESCRIPTION:
LOW COST BOARD SPACERS

DWG. NO.
XW-XX-XX-XXX-X-XXXX-XXX-XX-XXX

BY: WILLIAMS 08/13/1984 SHEET 2 OF 2

Looking for pricing, stock, or lifecycle information?

Click below to explore more details on WIN SOURCE:

-  [View ZW-15-14-H-D-970-440 on WIN SOURCE](#)
-  [Samtec Inc. Information](#)

Optimize Your Supply Chain with WIN SOURCE Solutions

-  Global Sourcing Solution
-  Obsolete Management
-  Cost Control Management
-  Shortage Management
-  Alternative Solution
-  Excess Inventory Management