



**THE DATASHEET OF
TMM-134-01-F-D-RA-034**



THROUGH-HOLE LOW PROFILE HEADER



(2.00 mm) .0787" PITCH • TMM SERIES

TMM
Board Mates:
 CLT, SQT, SQW, ESQT,
 TLE, SMM, MMS
Cable Mates:
 TCSD

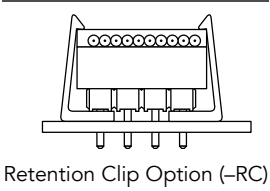
SPECIFICATIONS

Insulator Material:
 Black Liquid Crystal Polymer
Terminal Material:
 Phosphor Bronze
Plating:
 Sn or Au over
 50 μ" (1.27 μm) Ni
Current Rating (SMM/TMM):
 3.2 A per row
 (2 pins powered)
Operating Temp Range:
 -55 °C to +105 °C with Tin;
 -55 °C to +125 °C with Gold
Voltage Rating:
 281 VAC mated with SQW;
 250 VAC mated with SQT

PROCESSING

Lead-Free Solderable:
 Yes

APPLICATION



ALSO AVAILABLE
 MOQ Required
 Other Platings



Note:
 Some lengths, styles and options are non-standard, non-returnable.

TMM	1	NO. PINS PER ROW	LEAD STYLE	PLATING OPTION	ROW OPTION	OTHER OPTION
------------	----------	-------------------------	-------------------	-----------------------	-------------------	---------------------

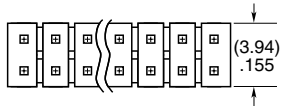
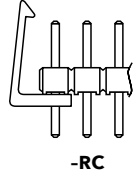
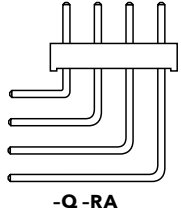
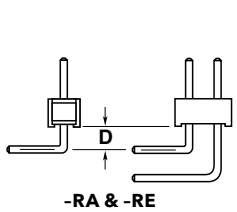
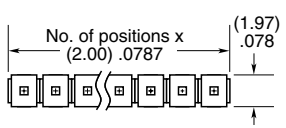
02 thru 50

Specify LEAD STYLE from chart

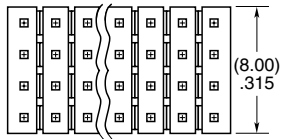
- F**
= Gold flash on post, Matte Tin on tail
- L**
= 10 μ" (0.25 μm) Gold on post, Matte Tin on tail
- S**
= 30 μ" (0.76 μm) Gold on post, Matte Tin on tail
- T**
= Matte Tin

- S**
= Single Row
- D**
= Double Row
- Q**
= Four Row

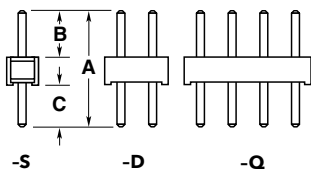
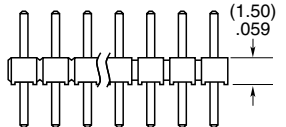
- RA & -RE**
= Right-angle (Lead Style -01 only) (2 positions minimum, -Q row)
- RC**
= Retention Clip (Mates with TCSD) (Double row only, 4 positions minimum, only available -06 lead style)
- "XXX"**
= Polarized Position (Specify position of omitted pin)



OPTION	D
-RA	(1.27) .050
-RE	(3.56) .140



LEAD STYLE	A	B	C
-01		(3.20) .126	(3.50) .138
-02	(8.20) .323	(3.70) .146	(3.00) .118
-03		(4.00) .158	(2.70) .106
-04	(5.69) .224	(1.91) .075	(2.29) .090
-05	(5.43) .214	(1.65) .065	
-06	(9.58) .377	(3.20) .126	(4.88) .192



Looking for pricing, stock, or lifecycle information?

Click below to explore more details on WIN SOURCE:

- ⊖ [View TMM-134-01-F-D-RA-034 on WIN SOURCE](#)
- ⊖ [Samtec Inc. Information](#)

Optimize Your Supply Chain with WIN SOURCE Solutions

- ✓ Global Sourcing Solution
- ✓ Obsolete Management
- ✓ Cost Control Management
- ✓ Shortage Management
- ✓ Alternative Solution
- ✓ Excess Inventory Management