

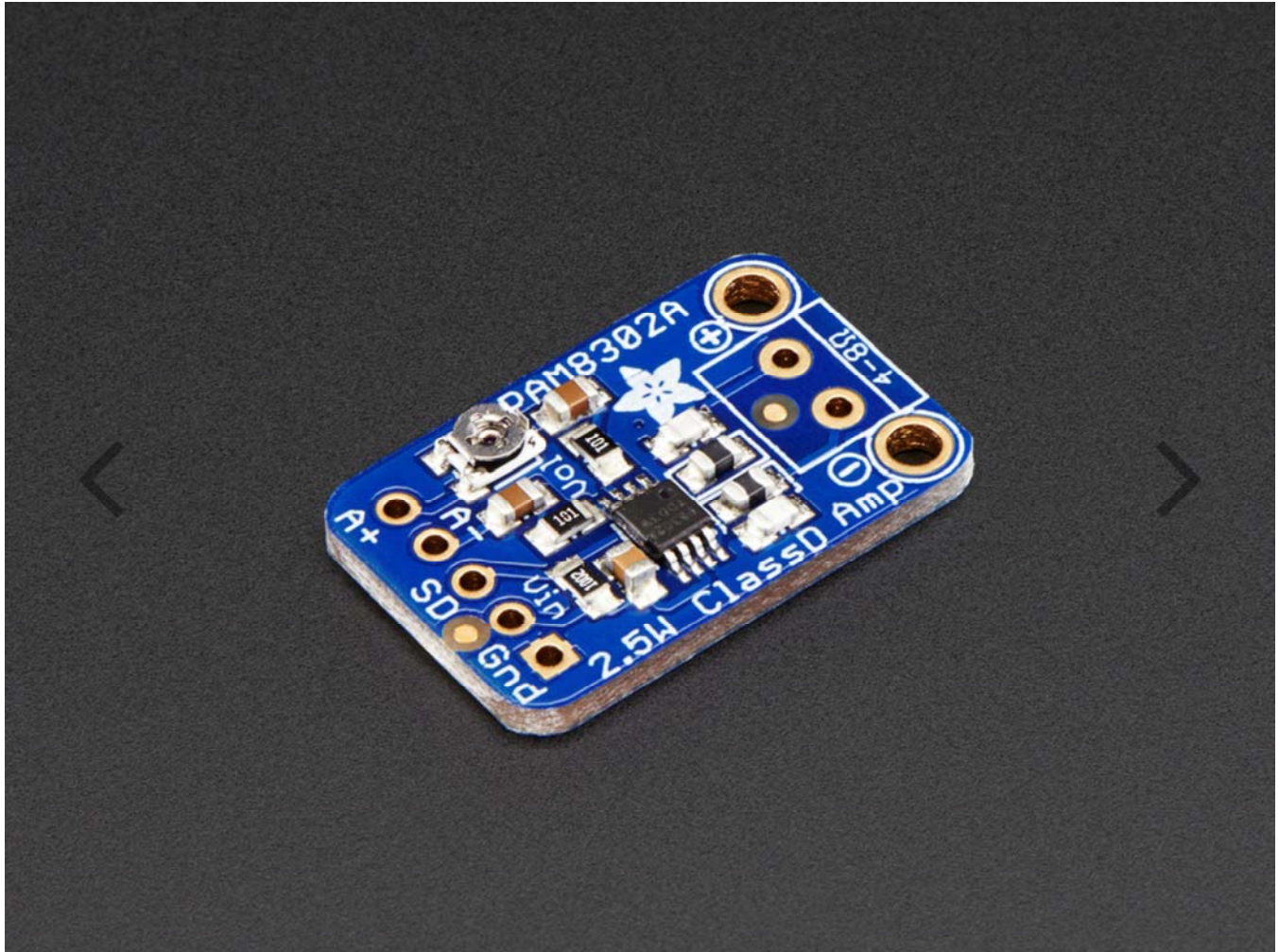


THE DATASHEET OF
2130



Adafruit Mono 2.5W Class D Audio Amplifier – PAM8302

PRODUCT ID: 2130



DESCRIPTION

This super small mono amplifier is surprisingly powerful – able to deliver up to 2.5 Watts into 4–8 ohm impedance speakers. Inside the miniature chip is a class D controller, able to run from 2.0V–5.5VDC. Since the amp is a class D, its very efficient (over 90% efficient when driving an 8Ω speaker at over half a Watt) – making it perfect for portable and battery–powered projects. It has built in thermal and over–current protection but we could barely tell it got hot. There's even a volume trim pot so you can adjust the volume on the board down from the default 24dB gain. This board is a welcome upgrade to basic "LM386" amps!

The A+ and A– inputs of the amplifier go through 1.0uF capacitors, so they are fully 'differential' – if you don't have differential outputs, simply tie the Audio– pin to ground. The output is "Bridge Tied" – that means the output pins connect directly to the speaker pins, no connection to ground. The output is a high frequency 250KHz square wave PWM that is then 'averaged out' by the speaker coil – the high frequencies are not heard. All the above means that you can't connect the output into another amplifier, it should drive the speakers directly.

Comes with a fully assembled and tested breakout board. We also include header to plug it into a breadboard and a 3.5mm screw–terminal blocks so you can easily attach/detach your speaker. You will be ready to rock in 15 minutes! Speaker is not included, use any 4 ohm or greater impedance speaker.

- Output Power: 2.5W at 4Ω, 10% THD, 1.5W at 8Ω, 10% THD, with 5.5V Supply
- 50dB PSRR at 1KHz
- Filterless design, with ferrite bead + capacitors on output.
- Fixed 24dB gain, onboard trim potentiometer for adjusting input volume.
- Thermal and short–circuit/over–current protection
- Low current draw: 4mA quiescent and 1uA in shutdown mode

Technical Details

[PAM8302A datasheet](#)

Dimensions (without 0.1" header):

15mm x 24mm x 2mm / 0.6" x 0.9" x 0.08"

Weight: 1.4g

Looking for pricing, stock, or lifecycle information?

Click below to explore more details on WIN SOURCE:

- ⊖ [View 2130 on WIN SOURCE](#)
- ⊖ [Adafruit Industries LLC Information](#)

Optimize Your Supply Chain with WIN SOURCE Solutions

- ✓ Global Sourcing Solution
- ✓ Obsolete Management
- ✓ Cost Control Management
- ✓ Shortage Management
- ✓ Alternative Solution
- ✓ Excess Inventory Management