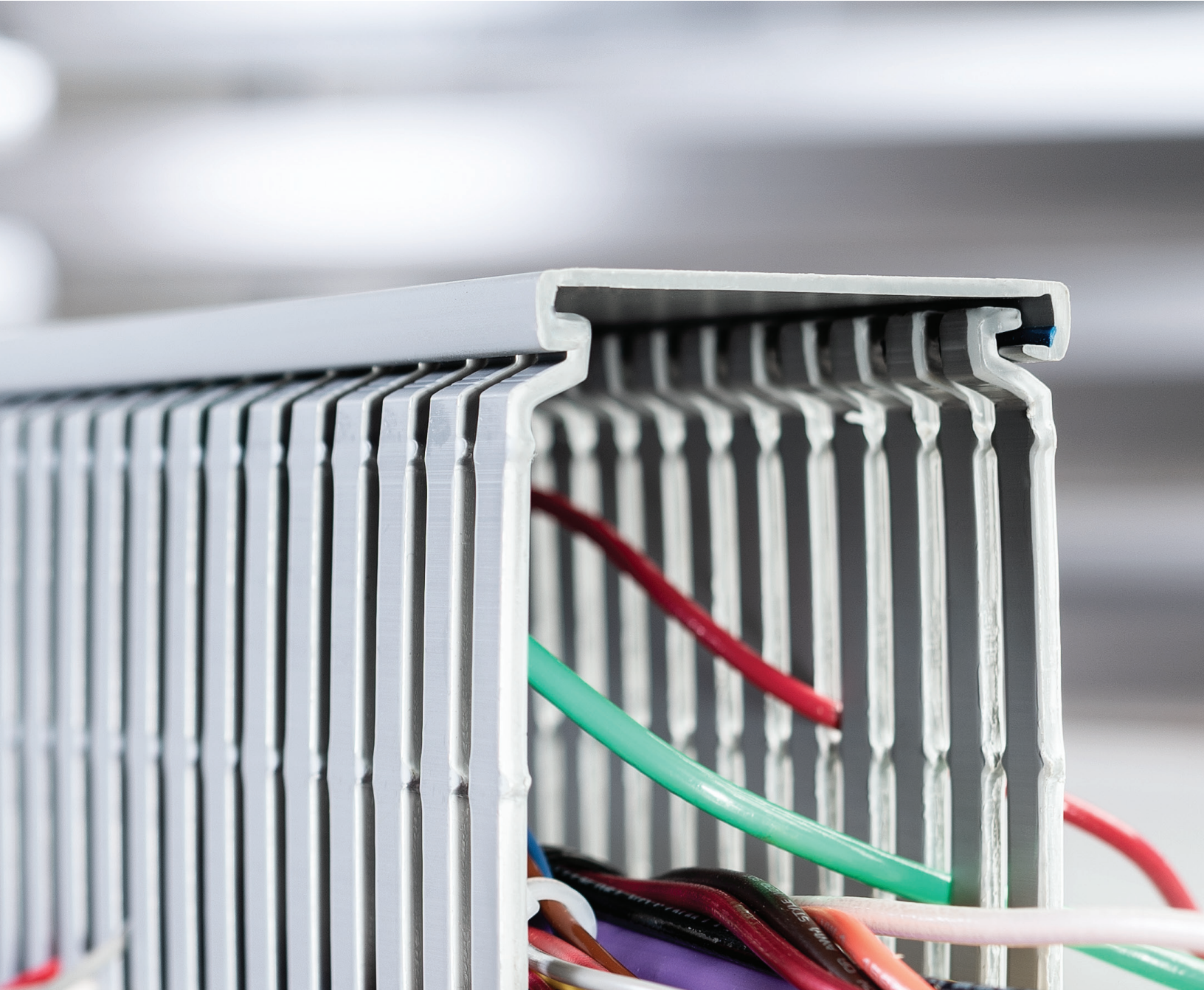




THE DATASHEET OF
164-11008





Wiring Duct Solutions

Durable and versatile routing and protection for wires and cables

MADE FOR REAL 

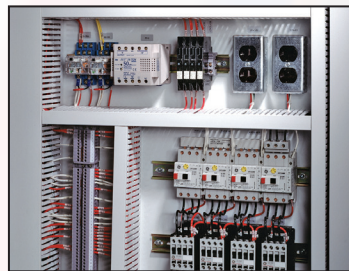
Wiring Duct Solutions

HellermannTyton's wiring duct family represents a wide range of quality solutions to route, conceal and protect wire and cable while providing a clean and professional-looking appearance.

The product range has expanded beyond the traditional portfolio of solid, standard and high-density slotted PVC duct to include halogen-free and flexible materials suitable for a variety of industrial applications and conditions. A matched collection of covers and accessories helps customize each application, making installations fast, easy and less costly.

Key Characteristics

- PVC materials have smooth edges to protect installers and wires from abrasion.
- Standard and high-density slotted styles with pre-scored fingers breakaway easily.
- Wide range of sizes and colors, including gray, white and black (intrinsic blue available by special order).
- PVC covers contain removable film that protects against scratches and creates a writable surface for temporary marking during layout and installation.
- Elongated mounting holes accommodate positioning changes.
- Halogen-free and low-smoke materials available for extreme temperature or restricted space applications.
- Highly flexible solution available for obstructed or confined spaces.
- Most versions available with adhesive backing for temporary positioning.



- HellermannTyton duct specifications: PVC Duct, UL Recognized (File # E64139), CSA Certified (File # 49249), CE Compliant and carries a UL flame rating of UL 94 V-0. This duct is lead free and is made with fire-retardant PVC.
- Halogen Free General Purpose UL Recognized (File # E357929)

Slotted Wall Duct

Slotted Wall Wiring Duct

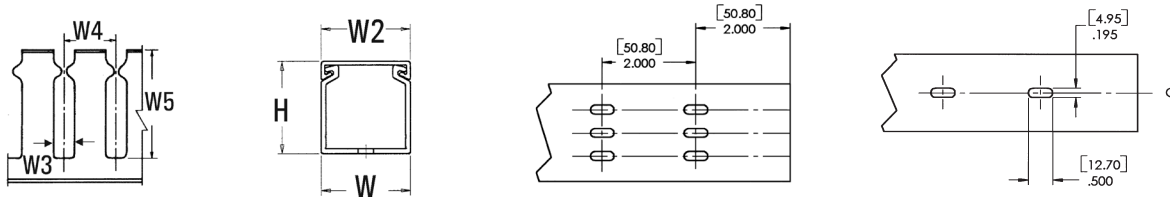
HellermannTyton Slotted Wall Wiring Duct features break-away fingers that provide additional access for wire leads. Each section of the duct is provided with two score lines. The upper score line is used to break away fingers when a greater opening is required. The lower score line allows the sidewall to be smoothly cut for joints and T's.

Features and Benefits

- Strong fingers prevent unwanted breaking.
- Restricted opening prevents unintended removal of wires and permits any individual wire to be traced without disconnection.
- Supplied with mounting holes to streamline installation.
- Optional covers enhance protection and appearance.



MATERIAL	Polyvinylchloride (PVC)
Operating Temperature	+122°F (+50°C)
Flammability	Self-Extinguishing



PART NO.	TYPE	Width (W) in. (mm)	Height (H) in. (mm)	Width (W2) in. (mm)	Width (W3) in. (mm)	Width (W4) in. (mm)	Width (W5) in. (mm)	Fixation Method	Color	Pkg. Qty.
181-11009*	SL1X1	1.0 (25.4)	1.1 (26.9)	1.0 (25.4)	0.4 (10.2)	1.0 (25.4)	0.8 (19.1)	Non-Adhesive	Black	120 ft
181-11013*		1.0 (25.4)	1.1 (26.9)	1.0 (25.4)	0.4 (10.2)	1.0 (25.4)	0.8 (19.1)	Non-Adhesive	Gray	120 ft
181-11015*		1.0 (25.4)	1.1 (26.9)	1.0 (25.4)	0.4 (10.2)	1.0 (25.4)	0.8 (19.1)	Non-Adhesive	White	120 ft
181-11016*	SLA1X1	1.0 (25.4)	1.1 (26.9)	1.0 (25.4)	0.4 (10.2)	1.0 (25.4)	0.8 (19.1)	Adhesive	Black	120 ft
181-11019*		1.0 (25.4)	1.1 (26.9)	1.0 (25.4)	0.4 (10.2)	1.0 (25.4)	0.8 (19.1)	Adhesive	Gray	120 ft
181-11021*		1.0 (25.4)	1.1 (26.9)	1.0 (25.4)	0.4 (10.2)	1.0 (25.4)	0.8 (19.1)	Adhesive	White	120 ft
181-00552*	SL1X1.5	1.0 (25.4)	1.6 (39.9)	1.0 (25.4)	0.4 (10.2)	1.0 (25.4)	1.2 (30.2)	Non-Adhesive	Black	120 ft
181-11505*		1.0 (25.4)	1.6 (39.9)	1.0 (25.4)	0.4 (10.2)	1.0 (25.4)	1.2 (30.2)	Non-Adhesive	Gray	120 ft
181-11507*		1.0 (25.4)	1.6 (39.9)	1.0 (25.4)	0.4 (10.2)	1.0 (25.4)	1.2 (30.2)	Non-Adhesive	White	120 ft
181-00564*	SLA1X1.5	1.0 (25.4)	1.6 (39.9)	1.0 (25.4)	0.4 (10.2)	1.0 (25.4)	1.2 (30.2)	Adhesive	Black	120 ft
181-11509*		1.0 (25.4)	1.6 (39.9)	1.0 (25.4)	0.4 (10.2)	1.0 (25.4)	1.2 (30.2)	Adhesive	Gray	120 ft
181-11511*		1.0 (25.4)	1.6 (39.9)	1.0 (25.4)	0.4 (10.2)	1.0 (25.4)	1.2 (30.2)	Adhesive	White	120 ft
181-00024*	SL1X2	1.0 (25.4)	2.1 (52.6)	1.0 (25.4)	0.4 (10.2)	1.0 (25.4)	1.6 (41.1)	Non-Adhesive	Black	120 ft
181-12005*		1.0 (25.4)	2.1 (52.6)	1.0 (25.4)	0.4 (10.2)	1.0 (25.4)	1.6 (41.1)	Non-Adhesive	Gray	120 ft
181-12008*		1.0 (25.4)	2.1 (52.6)	1.0 (25.4)	0.4 (10.2)	1.0 (25.4)	1.6 (41.1)	Non-Adhesive	White	120 ft

Dimensions are approximate and subject to technical changes. Use Part No. for ordering and Type for specification purposes. For wire fill capacities and wiring duct material properties, see appendix. *This product meets UL standards.



Please note - not all products listed on this page may have this approval. Please see www.HellermannTyton.com for the latest approvals.

Routing, Protection and Insulation

Wiring Duct

Slotted Wall Duct

Slotted Wall Wiring Duct

PART NO.	TYPE	Width (W) in. (mm)	Height (H) in. (mm)	Width (W2) in. (mm)	Width (W3) in. (mm)	Width (W4) in. (mm)	Width (W5) in. (mm)	Fixation Method	Color	Pkg. Qty.
181-00565*	SLA1X2	1.0 (25.4)	2.1 (52.6)	1.0 (25.4)	0.4 (10.2)	1.0 (25.4)	1.6 (41.1)	Adhesive	Black	120 ft
181-12011*		1.0 (25.4)	2.1 (52.6)	1.0 (25.4)	0.4 (10.2)	1.0 (25.4)	1.6 (41.1)	Adhesive	Gray	120 ft
181-12013*		1.0 (25.4)	2.1 (52.6)	1.0 (25.4)	0.4 (10.2)	1.0 (25.4)	1.6 (41.1)	Adhesive	White	120 ft
181-13003*	SL1X3	1.0 (25.4)	3.1 (77.9)	1.0 (25.4)	0.4 (10.2)	1.0 (25.4)	2.6 (66.0)	Non-Adhesive	Black	120 ft
181-13006*		1.0 (25.4)	3.1 (77.9)	1.0 (25.4)	0.4 (10.2)	1.0 (25.4)	2.6 (66.0)	Non-Adhesive	Gray	120 ft
181-13008*		1.0 (25.4)	3.1 (77.9)	1.0 (25.4)	0.4 (10.2)	1.0 (25.4)	2.6 (66.0)	Non-Adhesive	White	120 ft
181-00566*	SLA1X3	1.0 (25.4)	3.1 (77.9)	1.0 (25.4)	0.4 (10.2)	1.0 (25.4)	2.6 (66.0)	Adhesive	Black	120 ft
181-13010*		1.0 (25.4)	3.1 (77.9)	1.0 (25.4)	0.4 (10.2)	1.0 (25.4)	2.6 (66.0)	Adhesive	Gray	120 ft
181-13012*		1.0 (25.4)	3.1 (77.9)	1.0 (25.4)	0.4 (10.2)	1.0 (25.4)	2.6 (66.0)	Adhesive	White	120 ft
181-14001*	SL1X4	1.0 (25.4)	4.1 (103.4)	1.0 (25.4)	0.4 (10.2)	1.0 (25.4)	3.6 (91.4)	Non-Adhesive	Black	120 ft
181-14003*		1.0 (25.4)	4.1 (103.4)	1.0 (25.4)	0.4 (10.2)	1.0 (25.4)	3.6 (91.4)	Non-Adhesive	Gray	120 ft
181-14006*		1.0 (25.4)	4.1 (103.4)	1.0 (25.4)	0.4 (10.2)	1.0 (25.4)	3.6 (91.4)	Non-Adhesive	White	120 ft
181-00567*	SLA1X4	1.0 (25.4)	4.1 (103.4)	1.0 (25.4)	0.4 (10.2)	1.0 (25.4)	3.6 (91.4)	Adhesive	Black	120 ft
181-00568*		1.0 (25.4)	4.1 (103.4)	1.0 (25.4)	0.4 (10.2)	1.0 (25.4)	3.6 (91.4)	Adhesive	Gray	120 ft
181-00569*		1.0 (25.4)	4.1 (103.4)	1.0 (25.4)	0.4 (10.2)	1.0 (25.4)	3.6 (91.4)	Adhesive	White	120 ft
181-00548*	SL1.5X1	1.5 (38.1)	1.1 (26.9)	1.5 (38.1)	0.4 (10.2)	1.0 (25.4)	0.8 (19.1)	Non-Adhesive	Black	120 ft
181-15105*		1.5 (38.1)	1.1 (26.9)	1.5 (38.1)	0.4 (10.2)	1.0 (25.4)	0.8 (19.1)	Non-Adhesive	Gray	120 ft
181-15107*		1.5 (38.1)	1.1 (26.9)	1.5 (38.1)	0.4 (10.2)	1.0 (25.4)	0.8 (19.1)	Non-Adhesive	White	120 ft
181-00570*	SLA1.5X1	1.5 (38.1)	1.1 (26.9)	1.5 (38.1)	0.4 (10.2)	1.0 (25.4)	0.8 (19.1)	Adhesive	Black	120 ft
181-00571*		1.5 (38.1)	1.1 (26.9)	1.5 (38.1)	0.4 (10.2)	1.0 (25.4)	0.8 (19.1)	Adhesive	Gray	120 ft
181-00572*		1.5 (38.1)	1.1 (26.9)	1.5 (38.1)	0.4 (10.2)	1.0 (25.4)	0.8 (19.1)	Adhesive	White	120 ft
181-15505*	SL1.5X1.5	1.5 (38.1)	1.6 (39.9)	1.5 (38.1)	0.4 (10.2)	1.0 (25.4)	1.2 (30.5)	Non-Adhesive	Black	120 ft
181-15509*		1.5 (38.1)	1.6 (39.9)	1.5 (38.1)	0.4 (10.2)	1.0 (25.4)	1.2 (30.5)	Non-Adhesive	Gray	120 ft
181-15511*		1.5 (38.1)	1.6 (39.9)	1.5 (38.1)	0.4 (10.2)	1.0 (25.4)	1.2 (30.5)	Non-Adhesive	White	120 ft
181-00027*	SLA1.5X1.5	1.5 (38.1)	1.6 (39.9)	1.5 (38.1)	0.4 (10.2)	1.0 (25.4)	1.2 (30.5)	Adhesive	Black	120 ft
181-15513*		1.5 (38.1)	1.6 (39.9)	1.5 (38.1)	0.4 (10.2)	1.0 (25.4)	1.2 (30.5)	Adhesive	Gray	120 ft
181-15515*		1.5 (38.1)	1.6 (39.9)	1.5 (38.1)	0.4 (10.2)	1.0 (25.4)	1.2 (30.5)	Adhesive	White	120 ft
181-15203*	SL1.5X2	1.5 (38.1)	2.1 (52.6)	1.5 (38.1)	0.4 (10.2)	1.0 (25.4)	1.6 (40.6)	Non-Adhesive	Black	120 ft
181-15207*		1.5 (38.1)	2.1 (52.6)	1.5 (38.1)	0.4 (10.2)	1.0 (25.4)	1.6 (40.6)	Non-Adhesive	Gray	120 ft
181-15209*		1.5 (38.1)	2.1 (52.6)	1.5 (38.1)	0.4 (10.2)	1.0 (25.4)	1.6 (40.6)	Non-Adhesive	White	120 ft
181-00573*	SLA1.5X2	1.5 (38.1)	2.1 (52.6)	1.5 (38.1)	0.4 (10.2)	1.0 (25.4)	1.6 (40.6)	Adhesive	Black	120 ft
181-15211*		1.5 (38.1)	2.1 (52.6)	1.5 (38.1)	0.4 (10.2)	1.0 (25.4)	1.6 (40.6)	Adhesive	Gray	120 ft
181-15213*		1.5 (38.1)	2.1 (52.6)	1.5 (38.1)	0.4 (10.2)	1.0 (25.4)	1.6 (40.6)	Adhesive	White	120 ft
181-00550*	SL1.5X3	1.5 (38.1)	3.1 (77.9)	1.5 (38.1)	0.4 (10.2)	1.0 (25.4)	2.6 (66.0)	Non-Adhesive	Black	120 ft
181-15304*		1.5 (38.1)	3.1 (77.9)	1.5 (38.1)	0.4 (10.2)	1.0 (25.4)	2.6 (66.0)	Non-Adhesive	Gray	120 ft
181-15306*		1.5 (38.1)	3.1 (77.9)	1.5 (38.1)	0.4 (10.2)	1.0 (25.4)	2.6 (66.0)	Non-Adhesive	White	120 ft

Dimensions are approximate and subject to technical changes. Use Part No. for ordering and Type for specification purposes. For wire fill capacities and wiring duct material properties, see appendix. *This product meets UL standards.



Please note - not all products listed on this page may have this approval. Please see www.Hellermann.Tyton.com for the latest approvals.

Slotted Wall Duct

Slotted Wall Wiring Duct

PART NO.	TYPE	Width (W) in. (mm)	Height (H) in. (mm)	Width (W2) in. (mm)	Width (W3) in. (mm)	Width (W4) in. (mm)	Width (W5) in. (mm)	Fixation Method	Color	Pkg. Qty.
181-00575*	SLA1.5X3	1.5 (38.1)	3.1 (77.9)	1.5 (38.1)	0.4 (10.2)	1.0 (25.4)	2.6 (66.0)	Adhesive	Black	120 ft
181-15307*		1.5 (38.1)	3.1 (77.9)	1.5 (38.1)	0.4 (10.2)	1.0 (25.4)	2.6 (66.0)	Adhesive	Gray	120 ft
181-15308*		1.5 (38.1)	3.1 (77.9)	1.5 (38.1)	0.4 (10.2)	1.0 (25.4)	2.6 (66.0)	Adhesive	White	120 ft
181-15400*	SL1.5X4	1.5 (38.1)	4.1 (103.4)	1.5 (38.1)	0.4 (10.2)	1.0 (25.4)	3.6 (91.4)	Non-Adhesive	Black	120 ft
181-15404*		1.5 (38.1)	4.1 (103.4)	1.5 (38.1)	0.4 (10.2)	1.0 (25.4)	3.6 (91.4)	Non-Adhesive	Gray	120 ft
181-15406*		1.5 (38.1)	4.1 (103.4)	1.5 (38.1)	0.4 (10.2)	1.0 (25.4)	3.6 (91.4)	Non-Adhesive	White	120 ft
181-00576*	SLA1.5X4	1.5 (38.1)	4.1 (103.4)	1.5 (38.1)	0.4 (10.2)	1.0 (25.4)	3.6 (91.4)	Adhesive	Black	120 ft
181-00577*		1.5 (38.1)	4.1 (103.4)	1.5 (38.1)	0.4 (10.2)	1.0 (25.4)	3.6 (91.4)	Adhesive	Gray	120 ft
181-00578*		1.5 (38.1)	4.1 (103.4)	1.5 (38.1)	0.4 (10.2)	1.0 (25.4)	3.6 (91.4)	Adhesive	White	120 ft
181-00554*	SL2X1	2.0 (50.8)	1.1 (26.9)	2.0 (50.8)	0.4 (10.2)	1.0 (25.4)	0.8 (19.1)	Non-Adhesive	Black	120 ft
181-21005*		2.0 (50.8)	1.1 (26.9)	2.0 (50.8)	0.4 (10.2)	1.0 (25.4)	0.8 (19.1)	Non-Adhesive	Gray	120 ft
181-21007*		2.0 (50.8)	1.1 (26.9)	2.0 (50.8)	0.4 (10.2)	1.0 (25.4)	0.8 (19.1)	Non-Adhesive	White	120 ft
181-00579*	SLA2X1	2.0 (50.8)	1.1 (26.9)	2.0 (50.8)	0.4 (10.2)	1.0 (25.4)	0.8 (19.1)	Adhesive	Black	120 ft
181-21009*		2.0 (50.8)	1.1 (26.9)	2.0 (50.8)	0.4 (10.2)	1.0 (25.4)	0.8 (19.1)	Adhesive	Gray	120 ft
181-00580*		2.0 (50.8)	1.1 (26.9)	2.0 (50.8)	0.4 (10.2)	1.0 (25.4)	0.8 (19.1)	Adhesive	White	120 ft
181-22020*	SL2X2	2.0 (50.8)	2.1 (52.6)	2.0 (50.8)	0.4 (10.2)	1.0 (25.4)	1.6 (40.6)	Non-Adhesive	Black	120 ft
181-22024*		2.0 (50.8)	2.1 (52.6)	2.0 (50.8)	0.4 (10.2)	1.0 (25.4)	1.6 (40.6)	Non-Adhesive	Gray	120 ft
181-22028*		2.0 (50.8)	2.1 (52.6)	2.0 (50.8)	0.4 (10.2)	1.0 (25.4)	1.6 (40.6)	Non-Adhesive	White	120 ft
181-22032*	SLA2X2	2.0 (50.8)	2.1 (52.6)	2.0 (50.8)	0.4 (10.2)	1.0 (25.4)	1.6 (40.6)	Adhesive	Gray	120 ft
181-22034*		2.0 (50.8)	2.1 (52.6)	2.0 (50.8)	0.4 (10.2)	1.0 (25.4)	1.6 (40.6)	Adhesive	White	120 ft
181-23003*	SL2X3	2.0 (50.8)	3.1 (77.9)	2.0 (50.8)	0.4 (10.2)	1.0 (25.4)	2.6 (66.0)	Non-Adhesive	Black	120 ft
181-23007*		2.0 (50.8)	3.1 (77.9)	2.0 (50.8)	0.4 (10.2)	1.0 (25.4)	2.6 (66.0)	Non-Adhesive	Gray	120 ft
181-23009*		2.0 (50.8)	3.1 (77.9)	2.0 (50.8)	0.4 (10.2)	1.0 (25.4)	2.6 (66.0)	Non-Adhesive	White	120 ft
181-00581*	SLA2X3	2.0 (50.8)	3.1 (77.9)	2.0 (50.8)	0.4 (10.2)	1.0 (25.4)	2.6 (66.0)	Adhesive	Black	120 ft
181-00582*		2.0 (50.8)	3.1 (77.9)	2.0 (50.8)	0.4 (10.2)	1.0 (25.4)	2.6 (66.0)	Adhesive	Gray	120 ft
181-23012*		2.0 (50.8)	3.1 (77.9)	2.0 (50.8)	0.4 (10.2)	1.0 (25.4)	2.6 (66.0)	Adhesive	White	120 ft
181-24003*	SL2X4	2.0 (50.8)	4.1 (103.4)	2.0 (50.8)	0.4 (10.2)	1.0 (25.4)	3.6 (91.4)	Non-Adhesive	Black	120 ft
181-24008*		2.0 (50.8)	4.1 (103.4)	2.0 (50.8)	0.4 (10.2)	1.0 (25.4)	3.6 (91.4)	Non-Adhesive	Gray	120 ft
181-24011*		2.0 (50.8)	4.1 (103.4)	2.0 (50.8)	0.4 (10.2)	1.0 (25.4)	3.6 (91.4)	Non-Adhesive	White	120 ft
181-00583*	SLA2X4	2.0 (50.8)	4.1 (103.4)	2.0 (50.8)	0.4 (10.2)	1.0 (25.4)	3.6 (91.4)	Adhesive	Black	120 ft
181-24013*		2.0 (50.8)	4.1 (103.4)	2.0 (50.8)	0.4 (10.2)	1.0 (25.4)	3.6 (91.4)	Adhesive	Gray	120 ft
181-24014*		2.0 (50.8)	4.1 (103.4)	2.0 (50.8)	0.4 (10.2)	1.0 (25.4)	3.6 (91.4)	Adhesive	White	120 ft
181-00316*	SL2X5	2.0 (50.8)	5.1 (128.8)	2.0 (50.8)	0.4 (10.2)	1.0 (25.4)	4.6 (116.8)	Non-Adhesive	Black	120 ft
181-00236*		2.0 (50.8)	5.1 (128.8)	2.0 (50.8)	0.4 (10.2)	1.0 (25.4)	4.6 (116.8)	Non-Adhesive	Gray	120 ft
181-00240*		2.0 (50.8)	5.1 (128.8)	2.0 (50.8)	0.4 (10.2)	1.0 (25.4)	4.6 (116.8)	Non-Adhesive	White	120 ft

Dimensions are approximate and subject to technical changes. Use Part No. for ordering and Type for specification purposes.
For wire fill capacities and wiring duct material properties, see appendix. *This product meets UL standards.



Please note - not all products listed on this page may have this approval. Please see www.HellermannTyton.com for the latest approvals.

Routing, Protection and Insulation

Wiring Duct

Slotted Wall Duct

Slotted Wall Wiring Duct

PART NO.	TYPE	Width (W) in. (mm)	Height (H) in. (mm)	Width (W2) in. (mm)	Width (W3) in. (mm)	Width (W4) in. (mm)	Width (W5) in. (mm)	Fixation Method	Color	Pkg. Qty.
181-00317*	SLA2X5	2.0 (50.8)	5.1 (128.8)	2.0 (50.8)	0.4 (10.2)	1.0 (25.4)	4.6 (116.8)	Adhesive	Black	120 ft
181-00238*		2.0 (50.8)	5.1 (128.8)	2.0 (50.8)	0.4 (10.2)	1.0 (25.4)	4.6 (116.8)	Adhesive	Gray	120 ft
181-00242*		2.0 (50.8)	5.1 (128.8)	2.0 (50.8)	0.4 (10.2)	1.0 (25.4)	4.6 (116.8)	Adhesive	White	120 ft
181-00318*	SL2.5X3	2.5 (63.5)	3.1 (77.9)	2.5 (63.5)	0.4 (10.2)	1.0 (25.4)	2.6 (66.0)	Non-Adhesive	Black	120 ft
181-00212*		2.5 (63.5)	3.1 (77.9)	2.5 (63.5)	0.4 (10.2)	1.0 (25.4)	2.6 (66.0)	Non-Adhesive	Gray	120 ft
181-00216*		2.5 (63.5)	3.1 (77.9)	2.5 (63.5)	0.4 (10.2)	1.0 (25.4)	2.6 (66.0)	Non-Adhesive	White	120 ft
181-00319*	SLA2.5X3	2.5 (63.5)	3.1 (77.9)	2.5 (63.5)	0.4 (10.2)	1.0 (25.4)	2.6 (66.0)	Adhesive	Black	120 ft
181-00214*		2.5 (63.5)	3.1 (77.9)	2.5 (63.5)	0.4 (10.2)	1.0 (25.4)	2.6 (66.0)	Adhesive	Gray	120 ft
181-00218*		2.5 (63.5)	3.1 (77.9)	2.5 (63.5)	0.4 (10.2)	1.0 (25.4)	2.6 (66.0)	Adhesive	White	120 ft
181-00557*	SL3X1	3.0 (76.2)	1.1 (26.9)	3.0 (76.2)	0.4 (10.2)	1.0 (25.4)	0.8 (19.1)	Non-Adhesive	Black	120 ft
181-00558*		3.0 (76.2)	1.1 (26.9)	3.0 (76.2)	0.4 (10.2)	1.0 (25.4)	0.8 (19.1)	Non-Adhesive	Gray	120 ft
181-31007*		3.0 (76.2)	1.1 (26.9)	3.0 (76.2)	0.4 (10.2)	1.0 (25.4)	0.8 (19.1)	Non-Adhesive	White	120 ft
181-00584*	SLA3X1	3.0 (76.2)	1.1 (26.9)	3.0 (76.2)	0.4 (10.2)	1.0 (25.4)	0.8 (19.1)	Adhesive	Black	120 ft
181-00585*		3.0 (76.2)	1.1 (26.9)	3.0 (76.2)	0.4 (10.2)	1.0 (25.4)	0.8 (19.1)	Adhesive	Gray	120 ft
181-00586*		3.0 (76.2)	1.1 (26.9)	3.0 (76.2)	0.4 (10.2)	1.0 (25.4)	0.8 (19.1)	Adhesive	White	120 ft
181-32004*	SL3X2	3.0 (76.2)	2.1 (52.6)	3.0 (76.2)	0.4 (10.2)	1.0 (25.4)	1.6 (41.1)	Non-Adhesive	Black	120 ft
181-32006*		3.0 (76.2)	2.1 (52.6)	3.0 (76.2)	0.4 (10.2)	1.0 (25.4)	1.6 (41.1)	Non-Adhesive	Gray	120 ft
181-32009*		3.0 (76.2)	2.1 (52.6)	3.0 (76.2)	0.4 (10.2)	1.0 (25.4)	1.6 (41.1)	Non-Adhesive	White	120 ft
181-00026*	SLA3X2	3.0 (76.2)	2.1 (52.6)	3.0 (76.2)	0.4 (10.2)	1.0 (25.4)	1.6 (41.1)	Adhesive	Black	120 ft
181-32012*		3.0 (76.2)	2.1 (52.6)	3.0 (76.2)	0.4 (10.2)	1.0 (25.4)	1.6 (41.1)	Adhesive	Gray	120 ft
181-32015*		3.0 (76.2)	2.1 (52.6)	3.0 (76.2)	0.4 (10.2)	1.0 (25.4)	1.6 (41.1)	Adhesive	White	120 ft
181-33009*	SL3X3	3.0 (76.2)	3.1 (77.9)	3.0 (76.2)	0.4 (10.2)	1.0 (25.4)	2.6 (66.0)	Non-Adhesive	Black	120 ft
181-33016*		3.0 (76.2)	3.1 (77.9)	3.0 (76.2)	0.4 (10.2)	1.0 (25.4)	2.6 (66.0)	Non-Adhesive	Gray	120 ft
181-33018*		3.0 (76.2)	3.1 (77.9)	3.0 (76.2)	0.4 (10.2)	1.0 (25.4)	2.6 (66.0)	Non-Adhesive	White	120 ft
181-00159*	SLA3X3	3.0 (76.2)	3.1 (77.9)	3.0 (76.2)	0.4 (10.2)	1.0 (25.4)	2.6 (66.0)	Adhesive	Black	120 ft
181-33021*		3.0 (76.2)	3.1 (77.9)	3.0 (76.2)	0.4 (10.2)	1.0 (25.4)	2.6 (66.0)	Adhesive	Gray	120 ft
181-33022*		3.0 (76.2)	3.1 (77.9)	3.0 (76.2)	0.4 (10.2)	1.0 (25.4)	2.6 (66.0)	Adhesive	White	120 ft
181-34002*	SL3X4	3.0 (76.2)	4.1 (103.4)	3.0 (76.2)	0.4 (10.2)	1.0 (25.4)	3.6 (91.4)	Non-Adhesive	Black	120 ft
181-34004*		3.0 (76.2)	4.1 (103.4)	3.0 (76.2)	0.4 (10.2)	1.0 (25.4)	3.6 (91.4)	Non-Adhesive	Gray	120 ft
181-34007*		3.0 (76.2)	4.1 (103.4)	3.0 (76.2)	0.4 (10.2)	1.0 (25.4)	3.6 (91.4)	Non-Adhesive	White	120 ft
181-00588*	SLA3X4	3.0 (76.2)	4.1 (103.4)	3.0 (76.2)	0.4 (10.2)	1.0 (25.4)	3.6 (91.4)	Adhesive	Black	120 ft
181-00589*		3.0 (76.2)	4.1 (103.4)	3.0 (76.2)	0.4 (10.2)	1.0 (25.4)	3.6 (91.4)	Adhesive	Gray	120 ft
181-00590*		3.0 (76.2)	4.1 (103.4)	3.0 (76.2)	0.4 (10.2)	1.0 (25.4)	3.6 (91.4)	Adhesive	White	120 ft
181-35002*	SL3X5	3.0 (76.2)	5.1 (128.5)	3.0 (76.2)	0.4 (10.2)	1.0 (25.4)	4.6 (116.8)	Non-Adhesive	Black	120 ft
181-35005*		3.0 (76.2)	5.1 (128.5)	3.0 (76.2)	0.4 (10.2)	1.0 (25.4)	4.6 (116.8)	Non-Adhesive	Gray	120 ft
181-00560*		3.0 (76.2)	5.1 (128.5)	3.0 (76.2)	0.4 (10.2)	1.0 (25.4)	4.6 (116.8)	Non-Adhesive	White	120 ft

Dimensions are approximate and subject to technical changes. Use Part No. for ordering and Type for specification purposes.
For wire fill capacities and wiring duct material properties, see appendix. *This product meets UL standards.



Please note - not all products listed on this page may have this approval. Please see www.Hellermann.Tyton.com for the latest approvals.

Slotted Wall Duct

Slotted Wall Wiring Duct

PART NO.	TYPE	Width (W) in. (mm)	Height (H) in. (mm)	Width (W2) in. (mm)	Width (W3) in. (mm)	Width (W4) in. (mm)	Width (W5) in. (mm)	Fixation Method	Color	Pkg. Qty.
181-00157*	SLA3X5	3.0 (76.2)	5.1 (128.5)	3.0 (76.2)	0.4 (10.2)	1.0 (25.4)	4.6 (116.8)	Adhesive	Black	120 ft
181-00156*		3.0 (76.2)	5.1 (128.5)	3.0 (76.2)	0.4 (10.2)	1.0 (25.4)	4.6 (116.8)	Adhesive	Gray	120 ft
181-00155*		3.0 (76.2)	5.1 (128.5)	3.0 (76.2)	0.4 (10.2)	1.0 (25.4)	4.6 (116.8)	Adhesive	White	120 ft
181-42005*	SL4X2	4.0 (101.6)	2.1 (52.6)	4.0 (101.6)	0.4 (10.2)	1.0 (25.4)	1.6 (41.1)	Non-Adhesive	Black	120 ft
181-42008*		4.0 (101.6)	2.1 (52.6)	4.0 (101.6)	0.4 (10.2)	1.0 (25.4)	1.6 (41.1)	Non-Adhesive	Gray	120 ft
181-42010*		4.0 (101.6)	2.1 (52.6)	4.0 (101.6)	0.4 (10.2)	1.0 (25.4)	1.6 (41.1)	Non-Adhesive	White	120 ft
181-00591*	SLA4X2	4.0 (101.6)	2.1 (52.6)	4.0 (101.6)	0.4 (10.2)	1.0 (25.4)	1.6 (41.1)	Adhesive	Black	120 ft
181-00592*		4.0 (101.6)	2.1 (52.6)	4.0 (101.6)	0.4 (10.2)	1.0 (25.4)	1.6 (41.1)	Adhesive	Gray	120 ft
181-42014*		4.0 (101.6)	2.1 (52.6)	4.0 (101.6)	0.4 (10.2)	1.0 (25.4)	1.6 (41.1)	Adhesive	White	120 ft
181-00562*	SL4X3	4.0 (101.6)	3.1 (77.9)	4.0 (101.6)	0.4 (10.2)	1.0 (25.4)	2.6 (66.0)	Non-Adhesive	Black	120 ft
181-43004*		4.0 (101.6)	3.1 (77.9)	4.0 (101.6)	0.4 (10.2)	1.0 (25.4)	2.6 (66.0)	Non-Adhesive	Gray	120 ft
181-43006*		4.0 (101.6)	3.1 (77.9)	4.0 (101.6)	0.4 (10.2)	1.0 (25.4)	2.6 (66.0)	Non-Adhesive	White	120 ft
181-00593*	SLA4X3	4.0 (101.6)	3.1 (77.9)	4.0 (101.6)	0.4 (10.2)	1.0 (25.4)	2.6 (66.0)	Adhesive	Black	120 ft
181-43008*		4.0 (101.6)	3.1 (77.9)	4.0 (101.6)	0.4 (10.2)	1.0 (25.4)	2.6 (66.0)	Adhesive	Gray	120 ft
181-00594*		4.0 (101.6)	3.1 (77.9)	4.0 (101.6)	0.4 (10.2)	1.0 (25.4)	2.6 (66.0)	Adhesive	White	120 ft
181-44020*	SL4X4	4.0 (101.6)	4.1 (103.4)	4.0 (101.6)	0.4 (10.2)	1.0 (25.4)	3.6 (91.4)	Non-Adhesive	Black	120 ft
181-44027*		4.0 (101.6)	4.1 (103.4)	4.0 (101.6)	0.4 (10.2)	1.0 (25.4)	3.6 (91.4)	Non-Adhesive	Gray	120 ft
181-44031*		4.0 (101.6)	4.1 (103.4)	4.0 (101.6)	0.4 (10.2)	1.0 (25.4)	3.6 (91.4)	Non-Adhesive	White	120 ft
181-00595*	SLA4X4	4.0 (101.6)	4.1 (103.4)	4.0 (101.6)	0.4 (10.2)	1.0 (25.4)	3.6 (91.4)	Adhesive	Black	120 ft
181-44033*		4.0 (101.6)	4.1 (103.4)	4.0 (101.6)	0.4 (10.2)	1.0 (25.4)	3.6 (91.4)	Adhesive	Gray	120 ft
181-44035*		4.0 (101.6)	4.1 (103.4)	4.0 (101.6)	0.4 (10.2)	1.0 (25.4)	3.6 (91.4)	Adhesive	White	120 ft
181-45002*	SL4X5	4.0 (101.6)	5.1 (128.8)	4.0 (101.6)	0.4 (10.2)	1.0 (25.4)	4.6 (116.8)	Non-Adhesive	Black	60 ft
181-45010*		4.0 (101.6)	5.1 (128.8)	4.0 (101.6)	0.4 (10.2)	1.0 (25.4)	4.6 (116.8)	Non-Adhesive	Gray	60 ft
181-45011*		4.0 (101.6)	5.1 (128.8)	4.0 (101.6)	0.4 (10.2)	1.0 (25.4)	4.6 (116.8)	Non-Adhesive	White	60 ft
181-45012*	SLA4X5	4.0 (101.6)	5.1 (128.8)	4.0 (101.6)	0.4 (10.2)	1.0 (25.4)	4.6 (116.8)	Adhesive	Black	60 ft
181-00596*		4.0 (101.6)	5.1 (128.8)	4.0 (101.6)	0.4 (10.2)	1.0 (25.4)	4.6 (116.8)	Adhesive	Gray	60 ft
181-45013*		4.0 (101.6)	5.1 (128.8)	4.0 (101.6)	0.4 (10.2)	1.0 (25.4)	4.6 (116.8)	Adhesive	White	60 ft

Dimensions are approximate and subject to technical changes. Use Part No. for ordering and Type for specification purposes. For wire fill capacities and wiring duct material properties, see appendix. *This product meets UL standards.



Please note - not all products listed on this page may have this approval. Please see www.HellermannTyton.com for the latest approvals.

Routing, Protection and Insulation

Wiring Duct

High Density Slotted Wall Duct

High Density Slotted Wall Wiring Duct

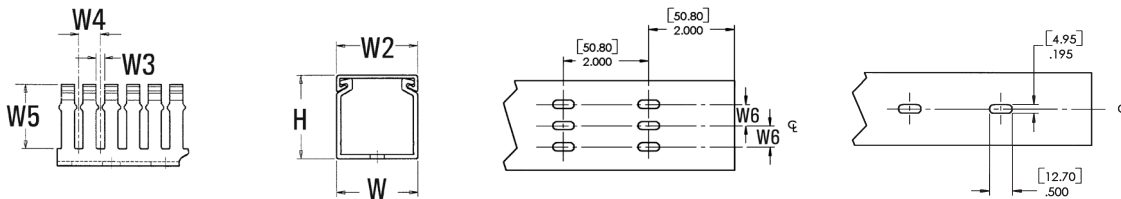
HellermannTyton High-Density Slotted Wall Wiring Duct features narrow fingers equaling a 2-to-1 finger ratio compared to standard slotted wiring duct. With the narrow fingers, compact designs and components are more easily accommodated.

Features and Benefits

- Narrow fingers reduce fanning of the wires to the terminal blocks, presenting a neater appearance.
- Each finger is provided with a double restriction to hold wires in the bottom portion of the duct, allowing for easier installation.
- Mounting holes are uniform in size and are offered every 2 inches to accommodate compact designs and ease installation.
- Optional covers snap on and off easily, and are provided with a non-slip lining that insures the covers remain in place during vibration.



MATERIAL	Polyvinylchloride (PVC)
Operating Temperature	+122°F (+50°C)
Flammability	Self-Extinguishing



PART NO.	TYPE	Width (W) in. (mm)	Height (H) in. (mm)	Width (W2) in. (mm)	Width (W3) in. (mm)	Width (W4) in. (mm)	Width (W5) in. (mm)	Fixation Method	Color	Pkg. Qty.
181-00597*	SLHD1X1	1.0 (25.4)	1.1 (26.9)	1.0 (25.4)	0.2 (4.1)	0.4 (10.2)	0.8 (19.1)	Non-Adhesive	Black	120 ft
184-11004*		1.0 (25.4)	1.1 (26.9)	1.0 (25.4)	0.2 (4.1)	0.4 (10.2)	0.8 (19.1)	Non-Adhesive	Gray	120 ft
184-11006*		1.0 (25.4)	1.1 (26.9)	1.0 (25.4)	0.2 (4.1)	0.4 (10.2)	0.8 (19.1)	Non-Adhesive	White	120 ft
181-00637*	SLHDA1X1	1.0 (25.4)	1.1 (26.9)	1.0 (25.4)	0.2 (4.1)	0.4 (10.2)	0.8 (19.1)	Adhesive	Black	120 ft
181-00621*		1.0 (25.4)	1.1 (26.9)	1.0 (25.4)	0.2 (4.1)	0.4 (10.2)	0.8 (19.1)	Adhesive	Gray	120 ft
181-00622*		1.0 (25.4)	1.1 (26.9)	1.0 (25.4)	0.2 (4.1)	0.4 (10.2)	0.8 (19.1)	Adhesive	White	120 ft
181-00598*	SLHD1X1.5	1.0 (25.4)	1.6 (39.9)	1.0 (25.4)	0.2 (4.1)	0.4 (10.2)	1.2 (30.2)	Non-Adhesive	Black	120 ft
184-11010*		1.0 (25.4)	1.6 (39.9)	1.0 (25.4)	0.2 (4.1)	0.4 (10.2)	1.2 (30.2)	Non-Adhesive	Gray	120 ft
184-11012*		1.0 (25.4)	1.6 (39.9)	1.0 (25.4)	0.2 (4.1)	0.4 (10.2)	1.2 (30.2)	Non-Adhesive	White	120 ft
181-00623*	SLHDA1X1.5	1.0 (25.4)	1.6 (39.9)	1.0 (25.4)	0.2 (4.1)	0.4 (10.2)	1.2 (30.2)	Adhesive	Black	120 ft
184-11008*		1.0 (25.4)	1.6 (39.9)	1.0 (25.4)	0.2 (4.1)	0.4 (10.2)	1.2 (30.2)	Adhesive	Gray	120 ft
184-11009*		1.0 (25.4)	1.6 (39.9)	1.0 (25.4)	0.2 (4.1)	0.4 (10.2)	1.2 (30.2)	Adhesive	White	120 ft
181-00599*	SLHD1X2	1.0 (25.4)	2.1 (52.6)	1.0 (25.4)	0.2 (4.1)	0.4 (10.2)	1.6 (41.1)	Non-Adhesive	Black	120 ft
184-12005*		1.0 (25.4)	2.1 (52.6)	1.0 (25.4)	0.2 (4.1)	0.4 (10.2)	1.6 (41.1)	Non-Adhesive	Gray	120 ft
184-12007*		1.0 (25.4)	2.1 (52.6)	1.0 (25.4)	0.2 (4.1)	0.4 (10.2)	1.6 (41.1)	Non-Adhesive	White	120 ft

Dimensions are approximate and subject to technical changes. Use Part No. for ordering and Type for specification purposes. For wire fill capacities and wiring duct material properties, see appendix. *This product meets UL standards.



Please note - not all products listed on this page may have this approval. Please see www.Hellermann.Tyton.com for the latest approvals.

High Density Slotted Wall Duct

High Density Slotted Wall Wiring Duct

PART NO.	TYPE	Width (W) in. (mm)	Height (H) in. (mm)	Width (W2) in. (mm)	Width (W3) in. (mm)	Width (W4) in. (mm)	Width (W5) in. (mm)	Fixation Method	Color	Pkg. Qty.
181-00624*	SLHDA1X2	1.0 (25.4)	2.1 (52.6)	1.0 (25.4)	0.2 (4.1)	0.4 (10.2)	1.6 (41.1)	Adhesive	Black	120 ft
184-12002*		1.0 (25.4)	2.1 (52.6)	1.0 (25.4)	0.2 (4.1)	0.4 (10.2)	1.6 (41.1)	Adhesive	Gray	120 ft
184-12004*		1.0 (25.4)	2.1 (52.6)	1.0 (25.4)	0.2 (4.1)	0.4 (10.2)	1.6 (41.1)	Adhesive	White	120 ft
181-00600*	SLHD1X3	1.0 (25.4)	3.1 (77.9)	1.0 (25.4)	0.2 (4.1)	0.4 (10.2)	2.6 (66.0)	Non-Adhesive	Black	120 ft
184-13005*		1.0 (25.4)	3.1 (77.9)	1.0 (25.4)	0.2 (4.1)	0.4 (10.2)	2.6 (66.0)	Non-Adhesive	Gray	120 ft
184-13007*		1.0 (25.4)	3.1 (77.9)	1.0 (25.4)	0.2 (4.1)	0.4 (10.2)	2.6 (66.0)	Non-Adhesive	White	120 ft
181-00625*	SLHDA1X3	1.0 (25.4)	3.1 (77.9)	1.0 (25.4)	0.2 (4.1)	0.4 (10.2)	2.6 (66.0)	Adhesive	Black	120 ft
181-00626*		1.0 (25.4)	3.1 (77.9)	1.0 (25.4)	0.2 (4.1)	0.4 (10.2)	2.6 (66.0)	Adhesive	Gray	120 ft
184-13003*		1.0 (25.4)	3.1 (77.9)	1.0 (25.4)	0.2 (4.1)	0.4 (10.2)	2.6 (66.0)	Adhesive	White	120 ft
181-00601*	SLHD1X4	1.0 (25.4)	4.1 (103.4)	1.0 (25.4)	0.2 (4.1)	0.4 (10.2)	3.6 (91.4)	Non-Adhesive	Black	120 ft
184-14002*		1.0 (25.4)	4.1 (103.4)	1.0 (25.4)	0.2 (4.1)	0.4 (10.2)	3.6 (91.4)	Non-Adhesive	Gray	120 ft
184-14004*		1.0 (25.4)	4.1 (103.4)	1.0 (25.4)	0.2 (4.1)	0.4 (10.2)	3.6 (91.4)	Non-Adhesive	White	120 ft
181-00627*	SLHDA1X4	1.0 (25.4)	4.1 (103.4)	1.0 (25.4)	0.2 (4.1)	0.4 (10.2)	3.6 (91.4)	Adhesive	Black	120 ft
181-00628*		1.0 (25.4)	4.1 (103.4)	1.0 (25.4)	0.2 (4.1)	0.4 (10.2)	3.6 (91.4)	Adhesive	Gray	120 ft
181-00629*		1.0 (25.4)	4.1 (103.4)	1.0 (25.4)	0.2 (4.1)	0.4 (10.2)	3.6 (91.4)	Adhesive	White	120 ft
181-00602*	SLHD1.5X1	1.5 (38.1)	1.1 (26.9)	1.5 (38.1)	0.2 (4.1)	0.4 (10.2)	0.8 (19.1)	Non-Adhesive	Black	120 ft
184-15101*		1.5 (38.1)	1.1 (26.9)	1.5 (38.1)	0.2 (4.1)	0.4 (10.2)	0.8 (19.1)	Non-Adhesive	Gray	120 ft
184-15102*		1.5 (38.1)	1.1 (26.9)	1.5 (38.1)	0.2 (4.1)	0.4 (10.2)	0.8 (19.1)	Non-Adhesive	White	120 ft
181-00630*	SLHDA1.5X1	1.5 (38.1)	1.1 (26.9)	1.5 (38.1)	0.2 (4.1)	0.4 (10.2)	0.8 (19.1)	Adhesive	Black	120 ft
181-00631*		1.5 (38.1)	1.1 (26.9)	1.5 (38.1)	0.2 (4.1)	0.4 (10.2)	0.8 (19.1)	Adhesive	Gray	120 ft
181-00632*		1.5 (38.1)	1.1 (26.9)	1.5 (38.1)	0.2 (4.1)	0.4 (10.2)	0.8 (19.1)	Adhesive	White	120 ft
181-00603*	SLHD1.5X1.5	1.5 (38.1)	1.6 (39.9)	1.5 (38.1)	0.2 (4.1)	0.4 (10.2)	1.2 (30.5)	Non-Adhesive	Black	120 ft
184-15152*		1.5 (38.1)	1.6 (39.9)	1.5 (38.1)	0.2 (4.1)	0.4 (10.2)	1.2 (30.5)	Non-Adhesive	Gray	120 ft
184-15155*		1.5 (38.1)	1.6 (39.9)	1.5 (38.1)	0.2 (4.1)	0.4 (10.2)	1.2 (30.5)	Non-Adhesive	White	120 ft
181-00633*	SLHDA1.5X1.5	1.5 (38.1)	1.6 (39.9)	1.5 (38.1)	0.2 (4.1)	0.4 (10.2)	1.2 (30.5)	Adhesive	Black	120 ft
184-15151*		1.5 (38.1)	1.6 (39.9)	1.5 (38.1)	0.2 (4.1)	0.4 (10.2)	1.2 (30.5)	Adhesive	Gray	120 ft
184-15153*		1.5 (38.1)	1.6 (39.9)	1.5 (38.1)	0.2 (4.1)	0.4 (10.2)	1.2 (30.5)	Adhesive	White	120 ft
181-00604*	SLHD1.5X2	1.5 (38.1)	2.1 (52.6)	1.5 (38.1)	0.2 (4.1)	0.4 (10.2)	1.6 (40.6)	Non-Adhesive	Black	120 ft
184-15202*		1.5 (38.1)	2.1 (52.6)	1.5 (38.1)	0.2 (4.1)	0.4 (10.2)	1.6 (40.6)	Non-Adhesive	Gray	120 ft
184-15206*		1.5 (38.1)	2.1 (52.6)	1.5 (38.1)	0.2 (4.1)	0.4 (10.2)	1.6 (40.6)	Non-Adhesive	White	120 ft
181-00634*	SLHDA1.5X2	1.5 (38.1)	2.1 (52.6)	1.5 (38.1)	0.2 (4.1)	0.4 (10.2)	1.6 (40.6)	Adhesive	Black	120 ft
184-15201*		1.5 (38.1)	2.1 (52.6)	1.5 (38.1)	0.2 (4.1)	0.4 (10.2)	1.6 (40.6)	Adhesive	Gray	120 ft
184-15205*		1.5 (38.1)	2.1 (52.6)	1.5 (38.1)	0.2 (4.1)	0.4 (10.2)	1.6 (40.6)	Adhesive	White	120 ft
181-00605*	SLHD1.5X3	1.5 (38.1)	3.1 (77.9)	1.5 (38.1)	0.2 (4.1)	0.4 (10.2)	2.6 (66.0)	Non-Adhesive	Black	120 ft
184-15302*		1.5 (38.1)	3.1 (77.9)	1.5 (38.1)	0.2 (4.1)	0.4 (10.2)	2.6 (66.0)	Non-Adhesive	Gray	120 ft
184-15304*		1.5 (38.1)	3.1 (77.9)	1.5 (38.1)	0.2 (4.1)	0.4 (10.2)	2.6 (66.0)	Non-Adhesive	White	120 ft

Dimensions are approximate and subject to technical changes. Use Part No. for ordering and Type for specification purposes. For wire fill capacities and wiring duct material properties, see appendix. *This product meets UL standards.



Please note - not all products listed on this page may have this approval. Please see www.HellermannTyton.com for the latest approvals.

Routing, Protection and Insulation

Wiring Duct

High Density Slotted Wall Duct

High Density Slotted Wall Wiring Duct

PART NO.	TYPE	Width (W) in. (mm)	Height (H) in. (mm)	Width (W2) in. (mm)	Width (W3) in. (mm)	Width (W4) in. (mm)	Width (W5) in. (mm)	Fixation Method	Color	Pkg. Qty.
181-00635*	SLHDA1.5X3	1.5 (38.1)	3.1 (77.9)	1.5 (38.1)	0.2 (4.1)	0.4 (10.2)	2.6 (66.0)	Adhesive	Black	120 ft
181-00636*		1.5 (38.1)	3.1 (77.9)	1.5 (38.1)	0.2 (4.1)	0.4 (10.2)	2.6 (66.0)	Adhesive	Gray	120 ft
184-15301*		1.5 (38.1)	3.1 (77.9)	1.5 (38.1)	0.2 (4.1)	0.4 (10.2)	2.6 (66.0)	Adhesive	White	120 ft
181-00606*	SLHD1.5X4	1.5 (38.1)	4.1 (103.4)	1.5 (38.1)	0.2 (4.1)	0.4 (10.2)	3.6 (91.4)	Non-Adhesive	Black	120 ft
184-15401*		1.5 (38.1)	4.1 (103.4)	1.5 (38.1)	0.2 (4.1)	0.4 (10.2)	3.6 (91.4)	Non-Adhesive	Gray	120 ft
184-15403*		1.5 (38.1)	4.1 (103.4)	1.5 (38.1)	0.2 (4.1)	0.4 (10.2)	3.6 (91.4)	Non-Adhesive	White	120 ft
181-00620*	SLHDA1.5X4	1.5 (38.1)	4.1 (103.4)	1.5 (38.1)	0.2 (4.1)	0.4 (10.2)	3.6 (91.4)	Adhesive	Black	120 ft
181-00638*		1.5 (38.1)	4.1 (103.4)	1.5 (38.1)	0.2 (4.1)	0.4 (10.2)	3.6 (91.4)	Adhesive	Gray	120 ft
181-00639*		1.5 (38.1)	4.1 (103.4)	1.5 (38.1)	0.2 (4.1)	0.4 (10.2)	3.6 (91.4)	Adhesive	White	120 ft
181-00607*	SLHD2X1	2.0 (50.8)	1.1 (26.9)	2.0 (50.8)	0.2 (4.1)	0.4 (10.2)	0.8 (19.1)	Non-Adhesive	Black	120 ft
184-21002*		2.0 (50.8)	1.1 (26.9)	2.0 (50.8)	0.2 (4.1)	0.4 (10.2)	0.8 (19.1)	Non-Adhesive	Gray	120 ft
184-21003*		2.0 (50.8)	1.1 (26.9)	2.0 (50.8)	0.2 (4.1)	0.4 (10.2)	0.8 (19.1)	Non-Adhesive	White	120 ft
181-00640*	SLHDA2X1	2.0 (50.8)	1.1 (26.9)	2.0 (50.8)	0.2 (4.1)	0.4 (10.2)	0.8 (19.1)	Adhesive	Black	120 ft
181-00641*		2.0 (50.8)	1.1 (26.9)	2.0 (50.8)	0.2 (4.1)	0.4 (10.2)	0.8 (19.1)	Adhesive	Gray	120 ft
181-00642*		2.0 (50.8)	1.1 (26.9)	2.0 (50.8)	0.2 (4.1)	0.4 (10.2)	0.8 (19.1)	Adhesive	White	120 ft
181-00608*	SLHD2X2	2.0 (50.8)	2.1 (52.6)	2.0 (50.8)	0.2 (4.1)	0.4 (10.2)	1.6 (40.6)	Non-Adhesive	Black	120 ft
184-22005*		2.0 (50.8)	2.1 (52.6)	2.0 (50.8)	0.2 (4.1)	0.4 (10.2)	1.6 (40.6)	Non-Adhesive	Gray	120 ft
184-22008*		2.0 (50.8)	2.1 (52.6)	2.0 (50.8)	0.2 (4.1)	0.4 (10.2)	1.6 (40.6)	Non-Adhesive	White	120 ft
181-00643*	SLHDA2X2	2.0 (50.8)	2.1 (52.6)	2.0 (50.8)	0.2 (4.1)	0.4 (10.2)	1.6 (40.6)	Adhesive	Black	120 ft
181-00644*		2.0 (50.8)	2.1 (52.6)	2.0 (50.8)	0.2 (4.1)	0.4 (10.2)	1.6 (40.6)	Adhesive	Gray	120 ft
184-22003*		2.0 (50.8)	2.1 (52.6)	2.0 (50.8)	0.2 (4.1)	0.4 (10.2)	1.6 (40.6)	Adhesive	White	120 ft
181-00609*	SLHD2X3	2.0 (50.8)	3.1 (77.9)	2.0 (50.8)	0.2 (4.1)	0.4 (10.2)	2.6 (66.0)	Non-Adhesive	Black	120 ft
184-23004*		2.0 (50.8)	3.1 (77.9)	2.0 (50.8)	0.2 (4.1)	0.4 (10.2)	2.6 (66.0)	Non-Adhesive	Gray	120 ft
184-23006*		2.0 (50.8)	3.1 (77.9)	2.0 (50.8)	0.2 (4.1)	0.4 (10.2)	2.6 (66.0)	Non-Adhesive	White	120 ft
181-00645*	SLHDA2X3	2.0 (50.8)	3.1 (77.9)	2.0 (50.8)	0.2 (4.1)	0.4 (10.2)	2.6 (66.0)	Adhesive	Black	120 ft
181-00646*		2.0 (50.8)	3.1 (77.9)	2.0 (50.8)	0.2 (4.1)	0.4 (10.2)	2.6 (66.0)	Adhesive	Gray	120 ft
184-23003*		2.0 (50.8)	3.1 (77.9)	2.0 (50.8)	0.2 (4.1)	0.4 (10.2)	2.6 (66.0)	Adhesive	White	120 ft
181-00610*	SLHD2X4	2.0 (50.8)	4.1 (103.4)	2.0 (50.8)	0.2 (4.1)	0.4 (10.2)	3.6 (91.4)	Non-Adhesive	Black	120 ft
184-24004*		2.0 (50.8)	4.1 (103.4)	2.0 (50.8)	0.2 (4.1)	0.4 (10.2)	3.6 (91.4)	Non-Adhesive	Gray	120 ft
184-24007*		2.0 (50.8)	4.1 (103.4)	2.0 (50.8)	0.2 (4.1)	0.4 (10.2)	3.6 (91.4)	Non-Adhesive	White	120 ft
181-00647*	SLHDA2X4	2.0 (50.8)	4.1 (103.4)	2.0 (50.8)	0.2 (4.1)	0.4 (10.2)	3.6 (91.4)	Adhesive	Black	120 ft
181-00648*		2.0 (50.8)	4.1 (103.4)	2.0 (50.8)	0.2 (4.1)	0.4 (10.2)	3.6 (91.4)	Adhesive	Gray	120 ft
184-24003*		2.0 (50.8)	4.1 (103.4)	2.0 (50.8)	0.2 (4.1)	0.4 (10.2)	3.6 (91.4)	Adhesive	White	120 ft
181-00320*	SLHD2X5	2.0 (50.8)	5.1 (128.8)	2.0 (50.8)	0.2 (4.1)	0.4 (10.2)	4.6 (116.8)	Non-Adhesive	Black	120 ft
181-00252*		2.0 (50.8)	5.1 (128.8)	2.0 (50.8)	0.2 (4.1)	0.4 (10.2)	4.6 (116.8)	Non-Adhesive	Gray	120 ft
181-00265*		2.0 (50.8)	5.1 (128.8)	2.0 (50.8)	0.2 (4.1)	0.4 (10.2)	4.6 (116.8)	Non-Adhesive	White	120 ft

Dimensions are approximate and subject to technical changes. Use Part No. for ordering and Type for specification purposes.
For wire fill capacities and wiring duct material properties, see appendix. *This product meets UL standards.



Please note - not all products listed on this page may have this approval. Please see www.Hellermann.Tyton.com for the latest approvals.

High Density Slotted Wall Duct

High Density Slotted Wall Wiring Duct

PART NO.	TYPE	Width (W) in. (mm)	Height (H) in. (mm)	Width (W2) in. (mm)	Width (W3) in. (mm)	Width (W4) in. (mm)	Width (W5) in. (mm)	Fixation Method	Color	Pkg. Qty.
181-00321*	SLHDA2X5	2.0 (50.8)	5.1 (128.8)	2.0 (50.8)	0.2 (4.1)	0.4 (10.2)	4.6 (116.8)	Adhesive	Black	120 ft
181-00254*		2.0 (50.8)	5.1 (128.8)	2.0 (50.8)	0.2 (4.1)	0.4 (10.2)	4.6 (116.8)	Adhesive	Gray	120 ft
181-00259*		2.0 (50.8)	5.1 (128.8)	2.0 (50.8)	0.2 (4.1)	0.4 (10.2)	4.6 (116.8)	Adhesive	White	120 ft
181-00322*	SLHD2.5X3	2.5 (63.5)	3.1 (77.9)	2.5 (63.5)	0.2 (4.1)	0.4 (10.2)	2.6 (66.0)	Non-Adhesive	Black	120 ft
181-00228*		2.5 (63.5)	3.1 (77.9)	2.5 (63.5)	0.2 (4.1)	0.4 (10.2)	2.6 (66.0)	Non-Adhesive	Gray	120 ft
181-00232*		2.5 (63.5)	3.1 (77.9)	2.5 (63.5)	0.2 (4.1)	0.4 (10.2)	2.6 (66.0)	Non-Adhesive	White	120 ft
181-00323*	SLHDA2.5X3	2.5 (63.5)	3.1 (77.9)	2.5 (63.5)	0.2 (4.1)	0.4 (10.2)	2.6 (66.0)	Adhesive	Black	120 ft
181-00230*		2.5 (63.5)	3.1 (77.9)	2.5 (63.5)	0.2 (4.1)	0.4 (10.2)	2.6 (66.0)	Adhesive	Gray	120 ft
181-00234*		2.5 (63.5)	3.1 (77.9)	2.5 (63.5)	0.2 (4.1)	0.4 (10.2)	2.6 (66.0)	Adhesive	White	120 ft
181-00611*	SLHD3X1	3.0 (76.2)	1.1 (26.9)	3.0 (76.2)	0.2 (4.1)	0.4 (10.2)	0.8 (19.1)	Non-Adhesive	Black	120 ft
181-00612*		3.0 (76.2)	1.1 (26.9)	3.0 (76.2)	0.2 (4.1)	0.4 (10.2)	0.8 (19.1)	Non-Adhesive	Gray	120 ft
181-00613*		3.0 (76.2)	1.1 (26.9)	3.0 (76.2)	0.2 (4.1)	0.4 (10.2)	0.8 (19.1)	Non-Adhesive	White	120 ft
181-00649*	SLHDA3X1	3.0 (76.2)	1.1 (26.9)	3.0 (76.2)	0.2 (4.1)	0.4 (10.2)	0.8 (19.1)	Adhesive	Black	120 ft
181-00651*		3.0 (76.2)	1.1 (26.9)	3.0 (76.2)	0.2 (4.1)	0.4 (10.2)	0.8 (19.1)	Adhesive	Gray	120 ft
181-00652*		3.0 (76.2)	1.1 (26.9)	3.0 (76.2)	0.2 (4.1)	0.4 (10.2)	0.8 (19.1)	Adhesive	White	120 ft
181-00614*	SLHD3X2	3.0 (76.2)	2.1 (52.6)	3.0 (76.2)	0.2 (4.1)	0.4 (10.2)	1.6 (41.1)	Non-Adhesive	Black	120 ft
184-32001*		3.0 (76.2)	2.1 (52.6)	3.0 (76.2)	0.2 (4.1)	0.4 (10.2)	1.6 (41.1)	Non-Adhesive	Gray	120 ft
184-32004*		3.0 (76.2)	2.1 (52.6)	3.0 (76.2)	0.2 (4.1)	0.4 (10.2)	1.6 (41.1)	Non-Adhesive	White	120 ft
181-00653*	SLHDA3X2	3.0 (76.2)	2.1 (52.6)	3.0 (76.2)	0.2 (4.1)	0.4 (10.2)	1.6 (41.1)	Adhesive	Black	120 ft
181-00654*		3.0 (76.2)	2.1 (52.6)	3.0 (76.2)	0.2 (4.1)	0.4 (10.2)	1.6 (41.1)	Adhesive	Gray	120 ft
181-00655*		3.0 (76.2)	2.1 (52.6)	3.0 (76.2)	0.2 (4.1)	0.4 (10.2)	1.6 (41.1)	Adhesive	White	120 ft
181-00615*	SLHD3X3	3.0 (76.2)	3.1 (77.9)	3.0 (76.2)	0.2 (4.1)	0.4 (10.2)	2.6 (66.0)	Non-Adhesive	Black	120 ft
184-33002*		3.0 (76.2)	3.1 (77.9)	3.0 (76.2)	0.2 (4.1)	0.4 (10.2)	2.6 (66.0)	Non-Adhesive	Gray	120 ft
184-33004*		3.0 (76.2)	3.1 (77.9)	3.0 (76.2)	0.2 (4.1)	0.4 (10.2)	2.6 (66.0)	Non-Adhesive	White	120 ft
181-00656*	SLHDA3X3	3.0 (76.2)	3.1 (77.9)	3.0 (76.2)	0.2 (4.1)	0.4 (10.2)	2.6 (66.0)	Adhesive	Black	120 ft
181-00657*		3.0 (76.2)	3.1 (77.9)	3.0 (76.2)	0.2 (4.1)	0.4 (10.2)	2.6 (66.0)	Adhesive	Gray	120 ft
184-33001*		3.0 (76.2)	3.1 (77.9)	3.0 (76.2)	0.2 (4.1)	0.4 (10.2)	2.6 (66.0)	Adhesive	White	120 ft
181-00616*	SLHD3X4	3.0 (76.2)	4.1 (103.4)	3.0 (76.2)	0.2 (4.1)	0.4 (10.2)	3.6 (91.4)	Non-Adhesive	Black	120 ft
184-34003*		3.0 (76.2)	4.1 (103.4)	3.0 (76.2)	0.2 (4.1)	0.4 (10.2)	3.6 (91.4)	Non-Adhesive	Gray	120 ft
184-34005*		3.0 (76.2)	4.1 (103.4)	3.0 (76.2)	0.2 (4.1)	0.4 (10.2)	3.6 (91.4)	Non-Adhesive	White	120 ft
181-00658*	SLHDA3X4	3.0 (76.2)	4.1 (103.4)	3.0 (76.2)	0.2 (4.1)	0.4 (10.2)	3.6 (91.4)	Adhesive	Black	120 ft
181-00659*		3.0 (76.2)	4.1 (103.4)	3.0 (76.2)	0.2 (4.1)	0.4 (10.2)	3.6 (91.4)	Adhesive	Gray	120 ft
184-34001*		3.0 (76.2)	4.1 (103.4)	3.0 (76.2)	0.2 (4.1)	0.4 (10.2)	3.6 (91.4)	Adhesive	White	120 ft
181-00151*	SLHD3X5	3.0 (76.2)	5.1 (128.5)	3.0 (76.2)	0.2 (4.1)	0.4 (10.2)	4.6 (116.8)	Non-Adhesive	Black	120 ft
181-00150*		3.0 (76.2)	5.1 (128.5)	3.0 (76.2)	0.2 (4.1)	0.4 (10.2)	4.6 (116.8)	Non-Adhesive	Gray	120 ft
181-00149*		3.0 (76.2)	5.1 (128.5)	3.0 (76.2)	0.2 (4.1)	0.4 (10.2)	4.6 (116.8)	Non-Adhesive	White	120 ft

Dimensions are approximate and subject to technical changes. Use Part No. for ordering and Type for specification purposes. For wire fill capacities and wiring duct material properties, see appendix. *This product meets UL standards.



Please note - not all products listed on this page may have this approval. Please see www.HellermannTyton.com for the latest approvals.

Routing, Protection and Insulation

Wiring Duct

High Density Slotted Wall Duct

High Density Slotted Wall Wiring Duct

PART NO.	TYPE	Width (W) in. (mm)	Height (H) in. (mm)	Width (W2) in. (mm)	Width (W3) in. (mm)	Width (W4) in. (mm)	Width (W5) in. (mm)	Fixation Method	Color	Pkg. Qty.
181-00660*	SLHDA3X5	3.0 (76.2)	5.1 (128.5)	3.0 (76.2)	0.2 (4.1)	0.4 (10.2)	4.6 (116.8)	Adhesive	Black	120 ft
181-00661*		3.0 (76.2)	5.1 (128.5)	3.0 (76.2)	0.2 (4.1)	0.4 (10.2)	4.6 (116.8)	Adhesive	Gray	120 ft
181-00662*		3.0 (76.2)	5.1 (128.5)	3.0 (76.2)	0.2 (4.1)	0.4 (10.2)	4.6 (116.8)	Adhesive	White	120 ft
181-00617*	SLHD4X2	4.0 (101.6)	2.1 (52.6)	4.0 (101.6)	0.2 (4.1)	0.4 (10.2)	1.6 (41.1)	Non-Adhesive	Black	120 ft
184-42001*		4.0 (101.6)	2.1 (52.6)	4.0 (101.6)	0.2 (4.1)	0.4 (10.2)	1.6 (41.1)	Non-Adhesive	Gray	120 ft
184-42003*		4.0 (101.6)	2.1 (52.6)	4.0 (101.6)	0.2 (4.1)	0.4 (10.2)	1.6 (41.1)	Non-Adhesive	White	120 ft
181-00663*	SLHDA4X2	4.0 (101.6)	2.1 (52.6)	4.0 (101.6)	0.2 (4.1)	0.4 (10.2)	1.6 (41.1)	Adhesive	Black	120 ft
181-00664*		4.0 (101.6)	2.1 (52.6)	4.0 (101.6)	0.2 (4.1)	0.4 (10.2)	1.6 (41.1)	Adhesive	Gray	120 ft
181-00665*		4.0 (101.6)	2.1 (52.6)	4.0 (101.6)	0.2 (4.1)	0.4 (10.2)	1.6 (41.1)	Adhesive	White	120 ft
181-00618*	SLHD4X3	4.0 (101.6)	3.1 (77.9)	4.0 (101.6)	0.2 (4.1)	0.4 (10.2)	2.6 (66.0)	Non-Adhesive	Black	120 ft
184-43001*		4.0 (101.6)	3.1 (77.9)	4.0 (101.6)	0.2 (4.1)	0.4 (10.2)	2.6 (66.0)	Non-Adhesive	Gray	120 ft
184-43003*		4.0 (101.6)	3.1 (77.9)	4.0 (101.6)	0.2 (4.1)	0.4 (10.2)	2.6 (66.0)	Non-Adhesive	White	120 ft
181-00154*	SLHDA4X3	4.0 (101.6)	3.1 (77.9)	4.0 (101.6)	0.2 (4.1)	0.4 (10.2)	2.6 (66.0)	Adhesive	Black	120 ft
181-00153*		4.0 (101.6)	3.1 (77.9)	4.0 (101.6)	0.2 (4.1)	0.4 (10.2)	2.6 (66.0)	Adhesive	Gray	120 ft
181-00152*		4.0 (101.6)	3.1 (77.9)	4.0 (101.6)	0.2 (4.1)	0.4 (10.2)	2.6 (66.0)	Adhesive	White	120 ft
181-00619*	SLHD4X4	4.0 (101.6)	4.1 (103.4)	4.0 (101.6)	0.2 (4.1)	0.4 (10.2)	3.6 (91.4)	Non-Adhesive	Black	120 ft
184-44002*		4.0 (101.6)	4.1 (103.4)	4.0 (101.6)	0.2 (4.1)	0.4 (10.2)	3.6 (91.4)	Non-Adhesive	Gray	120 ft
184-44004*		4.0 (101.6)	4.1 (103.4)	4.0 (101.6)	0.2 (4.1)	0.4 (10.2)	3.6 (91.4)	Non-Adhesive	White	120 ft
181-00666*	SLHDA4X4	4.0 (101.6)	4.1 (103.4)	4.0 (101.6)	0.2 (4.1)	0.4 (10.2)	3.6 (91.4)	Adhesive	Black	120 ft
181-00667*		4.0 (101.6)	4.1 (103.4)	4.0 (101.6)	0.2 (4.1)	0.4 (10.2)	3.6 (91.4)	Adhesive	Gray	120 ft
184-44001*		4.0 (101.6)	4.1 (103.4)	4.0 (101.6)	0.2 (4.1)	0.4 (10.2)	3.6 (91.4)	Adhesive	White	120 ft
181-00690*	SLHD4X5	4.0 (101.6)	5.1 (128.8)	4.0 (101.6)	0.2 (4.1)	0.4 (10.2)	4.6 (116.8)	Non-Adhesive	Black	60 ft
181-00692*		4.0 (101.6)	5.1 (128.8)	4.0 (101.6)	0.2 (4.1)	0.4 (10.2)	4.6 (116.8)	Non-Adhesive	Gray	60 ft
181-00691*		4.0 (101.6)	5.1 (128.8)	4.0 (101.6)	0.2 (4.1)	0.4 (10.2)	4.6 (116.8)	Non-Adhesive	White	60 ft
181-00668*	SLHDA4X5	4.0 (101.6)	5.1 (128.8)	4.0 (101.6)	0.2 (4.1)	0.4 (10.2)	4.6 (116.8)	Adhesive	Black	60 ft
181-00670*		4.0 (101.6)	5.1 (128.8)	4.0 (101.6)	0.2 (4.1)	0.4 (10.2)	4.6 (116.8)	Adhesive	Gray	60 ft
181-00669*		4.0 (101.6)	5.1 (128.8)	4.0 (101.6)	0.2 (4.1)	0.4 (10.2)	4.6 (116.8)	Adhesive	White	60 ft

Dimensions are approximate and subject to technical changes. Use Part No. for ordering and Type for specification purposes. For wire fill capacities and wiring duct material properties, see appendix. *This product meets UL standards.



Please note - not all products listed on this page may have this approval. Please see www.Hellermann.Tyton.com for the latest approvals.

Solid Wall Duct

Solid Wall Wiring Duct

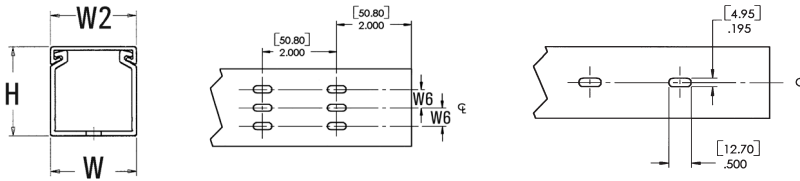
HellermannTyton Solid Wall Wiring Duct efficiently routes and protects wire. Solid wall wiring duct is designed for straight wire runs where breakouts are not required. Solid wall wiring duct is manufactured from high-impact, rigid PVC; comes in standard colors of white, gray and black; and is available in 6-foot lengths.

Features and Benefits

- Solid wall construction provides excellent coverage to keep wires clean.
- Durable material protects wires from damage, with long-lasting performance.
- Available standard colors complement or contrast in light and dark environments.
- Optional covers snap on and off easily, and are provided with a non-slip lining that insures the covers remain in place during vibration.



MATERIAL	Polyvinylchloride (PVC)
Operating Temperature	+122°F (+50°C)
Flammability	Self-Extinguishing



PART NO.	TYPE	Width (W) in. (mm)	Height (H) in. (mm)	Width (W2) in. (mm)	Fixation Method	Color	Pkg. Qty.
181-05500*	SD.5X.5	0.5 (12.7)	0.6 (14.0)	0.8 (19.3)	Non-Adhesive	Black	120 ft
181-05501*		0.5 (12.7)	0.6 (14.0)	0.8 (19.3)	Non-Adhesive	Gray	120 ft
181-00453*		0.5 (12.7)	0.6 (14.0)	0.8 (19.3)	Non-Adhesive	White	120 ft
181-00142*	SDA.75X.75	0.8 (19.1)	0.8 (20.3)	1.0 (25.4)	Adhesive	White	120 ft
181-00456*	SD.75X.75	0.8 (19.1)	0.8 (20.3)	1.0 (25.4)	Non-Adhesive	White	120 ft
181-11000*	SD1X1	1.0 (25.4)	1.1 (26.9)	1.0 (25.4)	Non-Adhesive	Black	120 ft
181-11002*		1.0 (25.4)	1.1 (26.9)	1.0 (25.4)	Non-Adhesive	Gray	120 ft
181-11005*		1.0 (25.4)	1.1 (26.9)	1.0 (25.4)	Non-Adhesive	White	120 ft
181-11006*	SDA1X1	1.0 (25.4)	1.1 (26.9)	1.0 (25.4)	Adhesive	Black	120 ft
181-00493*		1.0 (25.4)	1.1 (26.9)	1.0 (25.4)	Adhesive	Gray	120 ft
181-11008*		1.0 (25.4)	1.1 (26.9)	1.0 (25.4)	Adhesive	White	120 ft
181-00457*	SD1X1.5	1.0 (25.4)	1.6 (39.9)	1.0 (25.4)	Non-Adhesive	Black	120 ft
181-11501*		1.0 (25.4)	1.6 (39.9)	1.0 (25.4)	Non-Adhesive	Gray	120 ft
181-11502*		1.0 (25.4)	1.6 (39.9)	1.0 (25.4)	Non-Adhesive	White	120 ft
181-00529*	SDA1X1.5	1.0 (25.4)	1.6 (39.9)	1.0 (25.4)	Adhesive	Black	120 ft
181-00490*		1.0 (25.4)	1.6 (39.9)	1.0 (25.4)	Adhesive	Gray	120 ft
181-00491*		1.0 (25.4)	1.6 (39.9)	1.0 (25.4)	Adhesive	White	120 ft

Dimensions are approximate and subject to technical changes. Use Part No. for ordering and Type for specification purposes. For wire fill capacities and wiring duct material properties, see appendix. *This product meets UL standards.



Please note - not all products listed on this page may have this approval. Please see www.HellermannTyton.com for the latest approvals.

Routing, Protection and Insulation

Wiring Duct

Solid Wall Duct

Solid Wall Wiring Duct

PART NO.	TYPE	Width (W) in. (mm)	Height (H) in. (mm)	Width (W2) in. (mm)	Fixation Method	Color	Pkg. Qty.
181-00458*	SD1X2	1.0 (25.4)	2.1 (52.6)	1.0 (25.4)	Non-Adhesive	Black	120 ft
181-12001*		1.0 (25.4)	2.1 (52.6)	1.0 (25.4)	Non-Adhesive	Gray	120 ft
181-12002*		1.0 (25.4)	2.1 (52.6)	1.0 (25.4)	Non-Adhesive	White	120 ft
181-00530*	SDA1X2	1.0 (25.4)	2.1 (52.6)	1.0 (25.4)	Adhesive	Black	120 ft
181-00494*		1.0 (25.4)	2.1 (52.6)	1.0 (25.4)	Adhesive	Gray	120 ft
181-00495*		1.0 (25.4)	2.1 (52.6)	1.0 (25.4)	Adhesive	White	120 ft
181-00459*	SD1X3	1.0 (25.4)	3.1 (77.9)	1.0 (25.4)	Non-Adhesive	Black	120 ft
181-00136*		1.0 (25.4)	3.1 (77.9)	1.0 (25.4)	Non-Adhesive	Gray	120 ft
181-13001*		1.0 (25.4)	3.1 (77.9)	1.0 (25.4)	Non-Adhesive	White	120 ft
181-00531*	SDA1X3	1.0 (25.4)	3.1 (77.9)	1.0 (25.4)	Adhesive	Black	120 ft
181-00671*		1.0 (25.4)	3.1 (77.9)	1.0 (25.4)	Adhesive	Gray	120 ft
181-00496*		1.0 (25.4)	3.1 (77.9)	1.0 (25.4)	Adhesive	White	120 ft
181-00460*	SD1X4	1.0 (25.4)	4.1 (103.4)	1.0 (25.4)	Non-Adhesive	Black	120 ft
181-00461*		1.0 (25.4)	4.1 (103.4)	1.0 (25.4)	Non-Adhesive	Gray	120 ft
181-14000*		1.0 (25.4)	4.1 (103.4)	1.0 (25.4)	Non-Adhesive	White	120 ft
181-00532*	SDA1X4	1.0 (25.4)	4.1 (103.4)	1.0 (25.4)	Adhesive	Black	120 ft
181-00533*		1.0 (25.4)	4.1 (103.4)	1.0 (25.4)	Adhesive	Gray	120 ft
181-00497*		1.0 (25.4)	4.1 (103.4)	1.0 (25.4)	Adhesive	White	120 ft
181-15100*	SD1.5X1	1.5 (38.1)	1.1 (26.9)	1.5 (38.1)	Non-Adhesive	Black	120 ft
181-15101*		1.5 (38.1)	1.1 (26.9)	1.5 (38.1)	Non-Adhesive	Gray	120 ft
181-15102*		1.5 (38.1)	1.1 (26.9)	1.5 (38.1)	Non-Adhesive	White	120 ft
181-00485*	SDA1.5X1	1.5 (38.1)	1.1 (26.9)	1.5 (38.1)	Adhesive	Black	120 ft
181-00175*		1.5 (38.1)	1.1 (26.9)	1.5 (38.1)	Adhesive	Gray	120 ft
181-00486*		1.5 (38.1)	1.1 (26.9)	1.5 (38.1)	Adhesive	White	120 ft
181-15500*	SD1.5X1.5	1.5 (38.1)	1.6 (39.9)	1.5 (38.1)	Non-Adhesive	Black	120 ft
181-15502*		1.5 (38.1)	1.6 (39.9)	1.5 (38.1)	Non-Adhesive	Gray	120 ft
181-15503*		1.5 (38.1)	1.6 (39.9)	1.5 (38.1)	Non-Adhesive	White	120 ft
181-00482*	SDA1.5X1.5	1.5 (38.1)	1.6 (39.9)	1.5 (38.1)	Adhesive	Black	120 ft
181-00483*		1.5 (38.1)	1.6 (39.9)	1.5 (38.1)	Adhesive	Gray	120 ft
181-15504*		1.5 (38.1)	1.6 (39.9)	1.5 (38.1)	Adhesive	White	120 ft
181-00462*	SD1.5X2	1.5 (38.1)	2.1 (52.6)	1.5 (38.1)	Non-Adhesive	Black	120 ft
181-15201*		1.5 (38.1)	2.1 (52.6)	1.5 (38.1)	Non-Adhesive	Gray	120 ft
181-15202*		1.5 (38.1)	2.1 (52.6)	1.5 (38.1)	Non-Adhesive	White	120 ft
181-00534*	SDA1.5X2	1.5 (38.1)	2.1 (52.6)	1.5 (38.1)	Adhesive	Black	120 ft
181-00487*		1.5 (38.1)	2.1 (52.6)	1.5 (38.1)	Adhesive	Gray	120 ft
181-00488*		1.5 (38.1)	2.1 (52.6)	1.5 (38.1)	Adhesive	White	120 ft

Dimensions are approximate and subject to technical changes. Use Part No. for ordering and Type for specification purposes. For wire fill capacities and wiring duct material properties, see appendix. *This product meets UL standards.



Please note - not all products listed on this page may have this approval. Please see www.Hellermann.Tyton.com for the latest approvals.

Solid Wall Duct

Solid Wall Wiring Duct

PART NO.	TYPE	Width (W) in. (mm)	Height (H) in. (mm)	Width (W2) in. (mm)	Fixation Method	Color	Pkg. Qty.
181-00463*	SD1.5X3	1.5 (38.1)	3.1 (77.9)	1.5 (38.1)	Non-Adhesive	Black	120 ft
181-15300*		1.5 (38.1)	3.1 (77.9)	1.5 (38.1)	Non-Adhesive	Gray	120 ft
181-00464*		1.5 (38.1)	3.1 (77.9)	1.5 (38.1)	Non-Adhesive	White	120 ft
181-00535*	SDA1.5X3	1.5 (38.1)	3.1 (77.9)	1.5 (38.1)	Adhesive	Black	120 ft
181-00489*		1.5 (38.1)	3.1 (77.9)	1.5 (38.1)	Adhesive	Gray	120 ft
181-00536*		1.5 (38.1)	3.1 (77.9)	1.5 (38.1)	Adhesive	White	120 ft
181-00465*	SD1.5X4	1.5 (38.1)	4.1 (103.4)	1.5 (38.1)	Non-Adhesive	Black	120 ft
181-00574*		1.5 (38.1)	4.1 (103.4)	1.5 (38.1)	Non-Adhesive	Gray	120 ft
181-00467*		1.5 (38.1)	4.1 (103.4)	1.5 (38.1)	Non-Adhesive	White	120 ft
181-00537*	SDA1.5X4	1.5 (38.1)	4.1 (103.4)	1.5 (38.1)	Adhesive	Black	120 ft
181-00538*		1.5 (38.1)	4.1 (103.4)	1.5 (38.1)	Adhesive	Gray	120 ft
181-00539*		1.5 (38.1)	4.1 (103.4)	1.5 (38.1)	Adhesive	White	120 ft
181-21000*	SD2X1	2.0 (50.8)	1.1 (26.9)	2.0 (50.8)	Non-Adhesive	Black	120 ft
181-21001*		2.0 (50.8)	1.1 (26.9)	2.0 (50.8)	Non-Adhesive	Gray	120 ft
181-21003*		2.0 (50.8)	1.1 (26.9)	2.0 (50.8)	Non-Adhesive	White	120 ft
181-00498*	SDA2X1	2.0 (50.8)	1.1 (26.9)	2.0 (50.8)	Adhesive	Black	120 ft
181-00499*		2.0 (50.8)	1.1 (26.9)	2.0 (50.8)	Adhesive	Gray	120 ft
181-00500*		2.0 (50.8)	1.1 (26.9)	2.0 (50.8)	Adhesive	White	120 ft
181-22005*	SD2X2	2.0 (50.8)	2.1 (52.6)	2.0 (50.8)	Non-Adhesive	Black	120 ft
181-22008*		2.0 (50.8)	2.1 (52.6)	2.0 (50.8)	Non-Adhesive	Gray	120 ft
181-22013*		2.0 (50.8)	2.1 (52.6)	2.0 (50.8)	Non-Adhesive	White	120 ft
181-00501*	SDA2X2	2.0 (50.8)	2.1 (52.6)	2.0 (50.8)	Adhesive	Black	120 ft
181-22016*		2.0 (50.8)	2.1 (52.6)	2.0 (50.8)	Adhesive	Gray	120 ft
181-22018*		2.0 (50.8)	2.1 (52.6)	2.0 (50.8)	Adhesive	White	120 ft
181-00468*	SD2X3	2.0 (50.8)	3.1 (77.9)	2.0 (50.8)	Non-Adhesive	Black	120 ft
181-23001*		2.0 (50.8)	3.1 (77.9)	2.0 (50.8)	Non-Adhesive	Gray	120 ft
181-23002*		2.0 (50.8)	3.1 (77.9)	2.0 (50.8)	Non-Adhesive	White	120 ft
181-00540*	SDA2X3	2.0 (50.8)	3.1 (77.9)	2.0 (50.8)	Adhesive	Black	120 ft
181-00503*		2.0 (50.8)	3.1 (77.9)	2.0 (50.8)	Adhesive	Gray	120 ft
181-00504*		2.0 (50.8)	3.1 (77.9)	2.0 (50.8)	Adhesive	White	120 ft
181-00469*	SD2X4	2.0 (50.8)	4.1 (103.4)	2.0 (50.8)	Non-Adhesive	Black	120 ft
181-24000*		2.0 (50.8)	4.1 (103.4)	2.0 (50.8)	Non-Adhesive	Gray	120 ft
181-24002*		2.0 (50.8)	4.1 (103.4)	2.0 (50.8)	Non-Adhesive	White	120 ft
181-00541*	SDA2X4	2.0 (50.8)	4.1 (103.4)	2.0 (50.8)	Adhesive	Black	120 ft
181-00505*		2.0 (50.8)	4.1 (103.4)	2.0 (50.8)	Adhesive	Gray	120 ft
181-00506*		2.0 (50.8)	4.1 (103.4)	2.0 (50.8)	Adhesive	White	120 ft

Dimensions are approximate and subject to technical changes. Use Part No. for ordering and Type for specification purposes. For wire fill capacities and wiring duct material properties, see appendix. *This product meets UL standards.



Please note - not all products listed on this page may have this approval. Please see www.HellermannTyton.com for the latest approvals.

Routing, Protection and Insulation

Wiring Duct

Solid Wall Duct

Solid Wall Wiring Duct

PART NO.	TYPE	Width (W) in. (mm)	Height (H) in. (mm)	Width (W2) in. (mm)	Fixation Method	Color	Pkg. Qty.
181-00312*	SD2X5	2.0 (50.8)	5.1 (128.8)	2.0 (50.8)	Non-Adhesive	Black	120 ft
181-00244*		2.0 (50.8)	5.1 (128.8)	2.0 (50.8)	Non-Adhesive	Gray	120 ft
181-00248*		2.0 (50.8)	5.1 (128.8)	2.0 (50.8)	Non-Adhesive	White	120 ft
181-00313*	SDA2X5	2.0 (50.8)	5.1 (128.8)	2.0 (50.8)	Adhesive	Black	120 ft
181-00246*		2.0 (50.8)	5.1 (128.8)	2.0 (50.8)	Adhesive	Gray	120 ft
181-00250*		2.0 (50.8)	5.1 (128.8)	2.0 (50.8)	Adhesive	White	120 ft
181-00314*	SD2.5X3	2.5 (63.5)	3.1 (77.9)	2.5 (63.5)	Non-Adhesive	Black	120 ft
181-00220*		2.5 (63.5)	3.1 (77.9)	2.5 (63.5)	Non-Adhesive	Gray	120 ft
181-00224*		2.5 (63.5)	3.1 (77.9)	2.5 (63.5)	Non-Adhesive	White	120 ft
181-00315*	SDA2.5X3	2.5 (63.5)	3.1 (77.9)	2.5 (63.5)	Adhesive	Black	120 ft
181-00222*		2.5 (63.5)	3.1 (77.9)	2.5 (63.5)	Adhesive	Gray	120 ft
181-00226*		2.5 (63.5)	3.1 (77.9)	2.5 (63.5)	Adhesive	White	120 ft
181-00470*	SD3X1	3.0 (76.2)	1.1 (26.9)	3.0 (76.2)	Non-Adhesive	Black	120 ft
181-31001*		3.0 (76.2)	1.1 (26.9)	3.0 (76.2)	Non-Adhesive	Gray	120 ft
181-31002*		3.0 (76.2)	1.1 (26.9)	3.0 (76.2)	Non-Adhesive	White	120 ft
181-00672*	SDA3X1	3.0 (76.2)	1.1 (26.9)	3.0 (76.2)	Adhesive	Black	120 ft
181-00507*		3.0 (76.2)	1.1 (26.9)	3.0 (76.2)	Adhesive	Gray	120 ft
181-00508*		3.0 (76.2)	1.1 (26.9)	3.0 (76.2)	Adhesive	White	120 ft
181-00471*	SD3X2	3.0 (76.2)	2.1 (52.6)	3.0 (76.2)	Non-Adhesive	Black	120 ft
181-32002*		3.0 (76.2)	2.1 (52.6)	3.0 (76.2)	Non-Adhesive	Gray	120 ft
181-32003*		3.0 (76.2)	2.1 (52.6)	3.0 (76.2)	Non-Adhesive	White	120 ft
181-00542*	SDA3X2	3.0 (76.2)	2.1 (52.6)	3.0 (76.2)	Adhesive	Black	120 ft
181-00509*		3.0 (76.2)	2.1 (52.6)	3.0 (76.2)	Adhesive	Gray	120 ft
181-00510*		3.0 (76.2)	2.1 (52.6)	3.0 (76.2)	Adhesive	White	120 ft
181-33000*	SD3X3	3.0 (76.2)	3.1 (77.9)	3.0 (76.2)	Non-Adhesive	Black	120 ft
181-33004*		3.0 (76.2)	3.1 (77.9)	3.0 (76.2)	Non-Adhesive	Gray	120 ft
181-33006*		3.0 (76.2)	3.1 (77.9)	3.0 (76.2)	Non-Adhesive	White	120 ft
181-00511*	SDA3X3	3.0 (76.2)	3.1 (77.9)	3.0 (76.2)	Adhesive	Black	120 ft
181-00512*		3.0 (76.2)	3.1 (77.9)	3.0 (76.2)	Adhesive	Gray	120 ft
181-00513*		3.0 (76.2)	3.1 (77.9)	3.0 (76.2)	Adhesive	White	120 ft
181-00472*	SD3X4	3.0 (76.2)	4.1 (103.4)	3.0 (76.2)	Non-Adhesive	Black	120 ft
181-34000*		3.0 (76.2)	4.1 (103.4)	3.0 (76.2)	Non-Adhesive	Gray	120 ft
181-34001*		3.0 (76.2)	4.1 (103.4)	3.0 (76.2)	Non-Adhesive	White	120 ft
181-00147*	SDA3X4	3.0 (76.2)	4.1 (103.4)	3.0 (76.2)	Adhesive	Black	120 ft
181-00514*		3.0 (76.2)	4.1 (103.4)	3.0 (76.2)	Adhesive	Gray	120 ft
181-00515*		3.0 (76.2)	4.1 (103.4)	3.0 (76.2)	Adhesive	White	120 ft

Dimensions are approximate and subject to technical changes. Use Part No. for ordering and Type for specification purposes. For wire fill capacities and wiring duct material properties, see appendix. *This product meets UL standards.



Please note - not all products listed on this page may have this approval. Please see www.Hellermann.Tyton.com for the latest approvals.

Solid Wall Duct

Solid Wall Wiring Duct

PART NO.	TYPE	Width (W) in. (mm)	Height (H) in. (mm)	Width (W2) in. (mm)	Fixation Method	Color	Pkg. Qty.
181-00473*	SD3X5	3.0 (76.2)	5.1 (128.5)	3.0 (76.2)	Non-Adhesive	Black	120 ft
181-00474*		3.0 (76.2)	5.1 (128.5)	3.0 (76.2)	Non-Adhesive	Gray	120 ft
181-00475*		3.0 (76.2)	5.1 (128.5)	3.0 (76.2)	Non-Adhesive	White	120 ft
181-00543*	SDA3X5	3.0 (76.2)	5.1 (128.5)	3.0 (76.2)	Adhesive	Black	120 ft
181-00148*		3.0 (76.2)	5.1 (128.5)	3.0 (76.2)	Adhesive	Gray	120 ft
181-00544*		3.0 (76.2)	5.1 (128.5)	3.0 (76.2)	Adhesive	White	120 ft
181-00476*	SD4X2	4.0 (101.6)	2.1 (52.6)	4.0 (101.6)	Non-Adhesive	Black	120 ft
181-42002*		4.0 (101.6)	2.1 (52.6)	4.0 (101.6)	Non-Adhesive	Gray	120 ft
181-42004*		4.0 (101.6)	2.1 (52.6)	4.0 (101.6)	Non-Adhesive	White	120 ft
181-00545*	SDA4X2	4.0 (101.6)	2.1 (52.6)	4.0 (101.6)	Adhesive	Black	120 ft
181-00516*		4.0 (101.6)	2.1 (52.6)	4.0 (101.6)	Adhesive	Gray	120 ft
181-00517*		4.0 (101.6)	2.1 (52.6)	4.0 (101.6)	Adhesive	White	120 ft
181-00477*	SD4X3	4.0 (101.6)	3.1 (77.9)	4.0 (101.6)	Non-Adhesive	Black	120 ft
181-43001*		4.0 (101.6)	3.1 (77.9)	4.0 (101.6)	Non-Adhesive	Gray	120 ft
181-43002*		4.0 (101.6)	3.1 (77.9)	4.0 (101.6)	Non-Adhesive	White	120 ft
181-00546*	SDA4X3	4.0 (101.6)	3.1 (77.9)	4.0 (101.6)	Adhesive	Black	120 ft
181-00518*		4.0 (101.6)	3.1 (77.9)	4.0 (101.6)	Adhesive	Gray	120 ft
181-00519*		4.0 (101.6)	3.1 (77.9)	4.0 (101.6)	Adhesive	White	120 ft
181-44006*	SD4X4	4.0 (101.6)	4.1 (103.4)	4.0 (101.6)	Non-Adhesive	Black	120 ft
181-44009*		4.0 (101.6)	4.1 (103.4)	4.0 (101.6)	Non-Adhesive	Gray	120 ft
181-44015*		4.0 (101.6)	4.1 (103.4)	4.0 (101.6)	Non-Adhesive	White	120 ft
181-00520*	SDA4X4	4.0 (101.6)	4.1 (103.4)	4.0 (101.6)	Adhesive	Black	120 ft
181-44018*		4.0 (101.6)	4.1 (103.4)	4.0 (101.6)	Adhesive	Gray	120 ft
181-00521*		4.0 (101.6)	4.1 (103.4)	4.0 (101.6)	Adhesive	White	120 ft
181-00137*	SD4X5	4.0 (101.6)	5.1 (128.8)	4.0 (101.6)	Non-Adhesive	Black	60 ft
181-45000*		4.0 (101.6)	5.1 (128.8)	4.0 (101.6)	Non-Adhesive	Gray	60 ft
181-45001*		4.0 (101.6)	5.1 (128.8)	4.0 (101.6)	Non-Adhesive	White	60 ft
181-00547*	SDA4X5	4.0 (101.6)	5.1 (128.8)	4.0 (101.6)	Adhesive	Black	60 ft
181-00522*		4.0 (101.6)	5.1 (128.8)	4.0 (101.6)	Adhesive	Gray	60 ft
181-00523*		4.0 (101.6)	5.1 (128.8)	4.0 (101.6)	Adhesive	White	60 ft

Dimensions are approximate and subject to technical changes. Use Part No. for ordering and Type for specification purposes. For wire fill capacities and wiring duct material properties, see appendix. *This product meets UL standards.



Please note - not all products listed on this page may have this approval. Please see www.HellermannTyton.com for the latest approvals.

Routing, Protection and Insulation

Wiring Duct

Duct Tools and Accessories

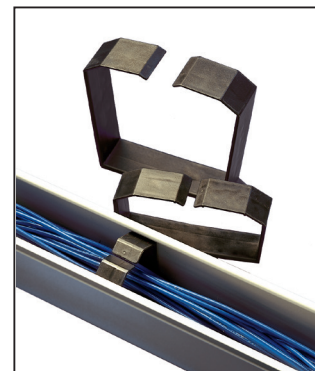
Solid Wall Wire Retainers

Solid wall wire retainers are inserted in the duct and snap into place. The retainer can be used on any smooth, straight run of duct and can work with vertical and overhead applications. Solid wall wire retainers are manufactured from black PVC.

Features and Benefits

- Effectively retains wires in duct when covers are removed.

MATERIAL	Polyvinylchloride (PVC)
Operating Temperature	+23°F to +176°F (-5°C to +80°C)
Flammability	UL 94 HB



PART NO.	TYPE	Description	Color	Pkg. Qty.
SDWR2X20K2	SDWR2X20	Wire Retainer, Solid Style for 2" x 2" Duct	Black	50
SDWR4X40P2	SDWR4X40	Wire Retainer, Solid Style for 4" x 4" Duct	Black	10

Dimensions are approximate and subject to technical changes. Use Part No. for ordering and Type for specification purposes.

Duct Tools and Accessories

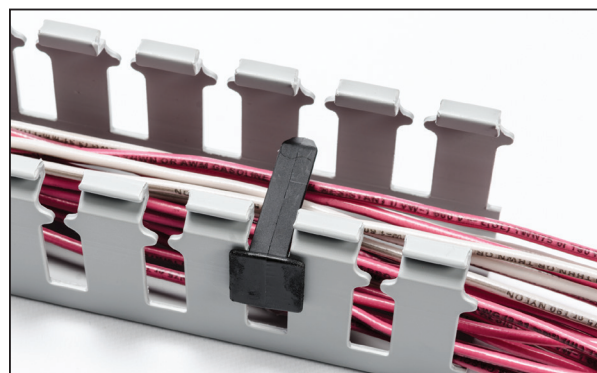
Slotted Wall Wire Retainers

Slotted wall wire retainers snap in from the outside of the duct, allowing for fast and easy installation and removal. Slotted wall wire retainers are manufactured from black nylon 6/6.

Features and Benefits

- Retainer spans approximately 90% over the duct opening for effective wire management.

MATERIAL	Polyamide 6.6 (PA66)
Operating Temperature	+23°F to +176°F (-5°C to +80°C)
Flammability	UL 94 HB



PART NO.	TYPE	Description	Color	Pkg. Qty.
SLWR20C2	SLWR20	Wire Retainer, Slotted Style for 2" Duct	Black	100
SLWR30C2	SLWR30	Wire Retainer, Slotted Style for 3" Duct	Black	100
SLWR40C2	SLWR40	Wire Retainer, Slotted Style for 4" Duct	Black	100

Dimensions are approximate and subject to technical changes. Use Part No. for ordering and Type for specification purposes.

Duct Tools and Accessories

Bench Mounted Wiring Duct Cutting Tool and Accessories

The HellermannTyton bench mounted wiring duct cutting tool is used to accurately measure and cut all HellermannTyton slotted and high density slotted wiring duct, solid dividers and covers.

Features and Benefits

- Hand lever is ergonomically designed to reduce user fatigue.
- Measuring guide incorporates both imperial and metric values which eliminates the need for secondary measurement devices.
- Long lasting, hardened blade produces burr-free edges and improves productivity by eliminating the need for filing the edges after cutting.
- Includes replacement blade and safety guide to ensure longevity, safety and proper use of the tool (replacements for both can also be purchased separately).



MATERIAL	Metal (MET)
-----------------	-------------

PART NO.	TYPE	Pkg. Qty.
904-00297	Wiring Duct Safety Guide	1
904-00296	Wiring Duct Cutting Tool Replacement Blade	1
904-00295	Wiring Duct Cutting Tool	1

Dimensions are approximate and subject to technical changes. Use Part No. for ordering and Type for specification purposes.

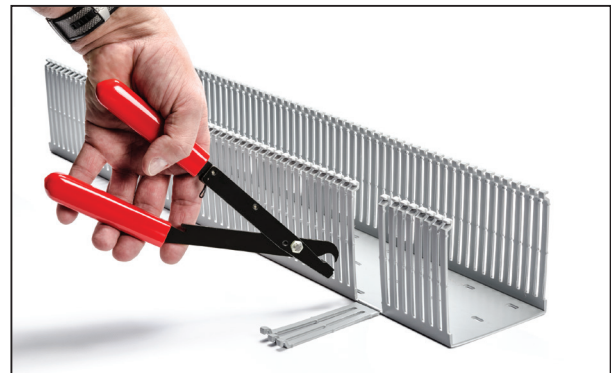
Duct Tools and Accessories

Duct Notching Tool

HellermannTyton's duct notching tool is designed for use with HellermannTyton's Slotted Wall and Slotted High-Density Wiring Duct. This handheld tool features plastic grips for easy handling and allows users to notch a duct sidewall section down to the very base for finger and sidewall removal.

Features and Benefits

- Plastic grips for easy tool handling.



MATERIAL	Steel (ST)
Color	Red (RD)

PART NO.	TYPE	Description	Color	Pkg. Qty.
TDNT	TDNT	Wiring Duct Notching Tool	Red	1

Dimensions are approximate and subject to technical changes. Use Part No. for ordering and Type for specification purposes.

Routing, Protection and Insulation

Wiring Duct

Duct Tools and Accessories

Panel Rivets and Tools

HellermannTyton panel rivets are one piece drive rivets that provide a fast, economic means of affixing wiring duct. The rivet is inserted into a 3/16" pre-punched hole and the pin is driven into the base, thereby expanding the rivet legs and locking the duct and sub-panel in place. The panel thickness (including the duct thickness) should be a maximum of 3/16". A panel rivet tool is also available for quick and easy installation of the drive rivets.

Features and Benefits

- Panel rivets are made with nylon material to hold duct securely to the panel without corroding, ensuring longevity.
- Panel rivets can be easily inserted with use of a specially designed, long shafted panel rivet tool.
- Ergonomic design of the tool ensures effortless use when inserting rivets into deep channels or locations difficult to access.



MATERIAL	Polyamide 6.6 (PA66)
Operating Temperature	-40°F to +176°F (-40°C to +80°C)
Flammability	UL 94 HB



PART NO.	TYPE	Description	Color	Pkg. Qty.
PR1M4	PR1	Panel Rivets	Natural	1000
PRT1	PRT1	Panel Rivet Tool	Yellow	1

Dimensions are approximate and subject to technical changes. Use Part No. for ordering and Type for specification purposes.

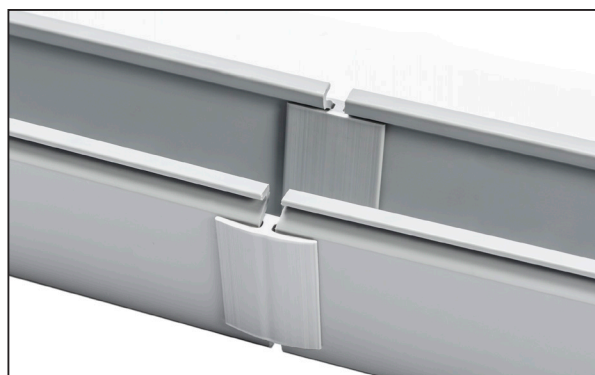
Duct Tools and Accessories

Corner Strips and Straight Connectors

HellermannTyton's Wiring Duct Connectors include corner strips and straight connectors. Corner strips are used for a rounded and smoother transition between sections of wiring duct meeting at a right angle whereas straight connectors join straight duct runs to cover and protect wires. Straight connectors are supplied in 6 foot lengths, can be used with all sizes of duct, and can be cut to fit duct sidewall heights.

Features and Benefits

- Easily cut to size for the appropriate duct size.
- Provides a smooth transition between sections of duct.



MATERIAL	Polyvinylchloride (PVC)
Operating Temperature	+122°F (+50°C)
Flammability	Self-Extinguishing



PART NO.	TYPE	Description	Color	Pkg. Qty.
181-00001	CSG	Wiring Duct Corner Strip Connector	Gray	120 ft
181-00002	CSW	Wiring Duct Corner Strip Connector	White	120 ft
181-00003	SCG	Wiring Duct Straight Connector	Gray	120 ft
181-00004	SCW	Wiring Duct Straight Connector	White	120 ft

Dimensions are approximate and subject to technical changes. Use Part No. for ordering and Type for specification purposes.

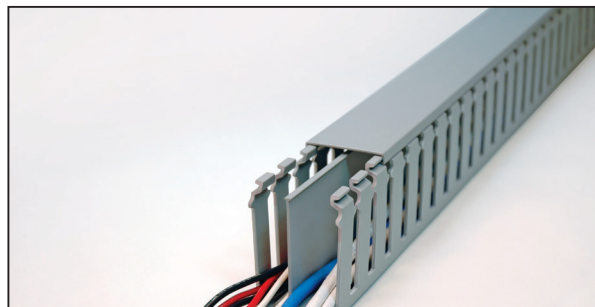
Duct Tools and Accessories

Wiring Duct Dividers

Solid-Wall Dividers can be securely mounted into all types of HellermannTyton wiring duct to separate high and low voltage, thus reducing interference. The dividers simply snap or slide into the specially designed mount, instantly creating multiple channels within a single duct size.

Features and Benefits

- Dividers have continuous score lines for smooth breakouts.
- Top of the dividers has a double-sided lip which reduces the likelihood of wires falling out during installation.



MATERIAL	Polyvinylchloride (PVC)
Operating Temperature	+122°F (+50°C)
Flammability	Self-Extinguishing



PART NO.	TYPE	Width (W) in. (mm)	Height (H) in. (mm)	Description	Color	Pkg. Qty.
181-00300*	DV1	0.8 (19.1)	0.9 (22.9)	Wiring Duct Divider, 1" High	Gray	120 ft
181-00305*		0.8 (19.1)	0.9 (22.9)	Wiring Duct Divider, 1" High	White	120 ft
181-00301*	DV1.5	0.8 (19.1)	1.4 (35.6)	Wiring Duct Divider, 1.5" High	Gray	120 ft
181-00306*		0.8 (19.1)	1.4 (35.6)	Wiring Duct Divider, 1.5" High	White	120 ft
181-00302*	DV2	0.8 (19.1)	1.9 (47.0)	Wiring Duct Divider, 2" High	Gray	120 ft
181-00307*		0.8 (19.1)	1.9 (47.0)	Wiring Duct Divider, 2" High	White	120 ft
181-00303*	DV3	0.8 (19.6)	2.9 (72.4)	Wiring Duct Divider, 3" High	Gray	120 ft
181-00308*		0.8 (19.6)	2.9 (72.4)	Wiring Duct Divider, 3" High	White	120 ft
181-00304*	DV4	0.8 (19.6)	3.9 (97.8)	Wiring Duct Divider, 4" High	Gray	120 ft
181-00309*		0.8 (19.6)	3.9 (97.8)	Wiring Duct Divider, 4" High	White	120 ft

Dimensions are approximate and subject to technical changes. Use Part No. for ordering and Type for specification purposes.
Sold in 6-ft. lengths. *This product meets UL standards.



Please note - not all products listed on this page may have this approval. Please see www.HellermannTyton.com for the latest approvals.

Routing, Protection and Insulation

Wiring Duct

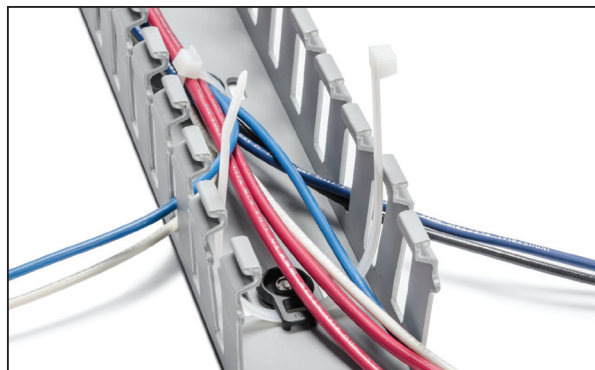
Duct Tools and Accessories

Universal Wiring Duct Mount

The HellermannTyton universal wiring duct mount is a multi-purpose mount that secures duct dividers or secures wire bundles inside the duct with a cable tie. The mount can be installed with duct panel rivets or mechanical fasteners. The bottom of the mount has locator tabs that fit into the duct mounting holes, preventing the mount from spinning during installation.

Features and Benefits

- Tabs align the mount for easy divider installation.
- Top of the mount creates separation between wires and the fastener head which protects the wires from abrasion.
- When used as a duct divider mount, the divider snaps or slides over the mount resulting in a quick, secure installation.
- When used as a wire bundle mount, simply slide the cable tie through any of the four-way tie slots to secure the bundle and prevent the cables from falling outside the duct during installation and cover removal.



MATERIAL	Polyamide 6.6 V0 (PA66V0)
Operating Temperature	-40°F to +230°F (-40°C to +110°C)
Flammability	UL 94 V0



PART NO.	TYPE	Color	Pkg. Qty.
181-00684	DVM	Black	100

Dimensions are approximate and subject to technical changes. Use Part No. for ordering and Type for specification purposes.

Duct Tools and Accessories

Wire Management Bracket Hinge

Wire management bracket hinges allow for an easy open and close feature, much like a door, without entire removal of the cover. This prevents the misplacement of covers as well as helps in the protection of wires and cables.

Features and Benefits

- The hinge snaps easily onto the cover and channel allowing quick assembly.
- Once assembled, the hinge permits the cover to open like a door, protecting the wires and cables.



MATERIAL	Polyamide 6.6 high impact modified, heat and UV stabilized (PA66HIRHSUV)
Operating Temperature	-40°F to +221°F (-40°C to +105°C)
Flammability	UL 94 HB
Color	Black (BK)

PART NO.	TYPE	Color	Pkg. Qty.
WMBH	WMBH	Black	25

Dimensions are approximate and subject to technical changes. Use Part No. for ordering and Type for specification purposes.

Duct Tools and Accessories

Wiring Duct Covers

HellermannTyton wiring duct covers are sold separately and are interchangeable among the three styles of duct (solid, slotted and high density). Manufactured from high-impact, rigid PVC, covers come in standard colors of white, gray and black. Wiring duct covers are available in 6-foot lengths.

Features and Benefits

- A temporary film is applied to the covers to protect against scratches and is writable for identification during installation.
- Cover is flush with the side of the duct for increased wire capacity and allows for tight, side-by-side duct placement.
- Covers are provided with a nonslip lining that ensures the covers remain in place during vibration, yet easily snap on and off.



MATERIAL	Polyvinylchloride (PVC)
Operating Temperature	+122°F (+50°C)
Flammability	Self-Extinguishing



PART NO.	TYPE	Width (W) in. (mm)	Color	Pkg. Qty.
181-90050	TC.5	0.6 (16.3)	Black	120 ft
181-90051		0.6 (16.3)	Gray	120 ft
181-00443		0.6 (16.3)	White	120 ft
181-00445	TC.75	0.9 (22.6)	Black	120 ft
181-90750		0.9 (22.6)	Gray	120 ft
181-90751		0.9 (22.6)	White	120 ft
181-91000	TC1	1.0 (25.4)	Black	120 ft
181-91004		1.0 (25.4)	Gray	120 ft
181-91008		1.0 (25.4)	White	120 ft
181-91503	TC1.5	1.5 (38.1)	Black	120 ft
181-91507		1.5 (38.1)	Gray	120 ft
181-91510		1.5 (38.1)	White	120 ft
181-92001	TC2	2.0 (50.8)	Black	120 ft
181-92005		2.0 (50.8)	Gray	120 ft
181-92011		2.0 (50.8)	White	120 ft
181-00311	TC2.5	2.5 (63.5)	Black	120 ft
181-00260		2.5 (63.5)	Gray	120 ft
181-00262		2.5 (63.5)	White	120 ft
181-93003	TC3	3.0 (76.2)	Black	120 ft
181-93008		3.0 (76.2)	Gray	120 ft
181-93011		3.0 (76.2)	White	120 ft
181-94003	TC4	4.0 (101.6)	Black	120 ft
181-94009		4.0 (101.6)	Gray	120 ft
181-94014		4.0 (101.6)	White	120 ft

Dimensions are approximate and subject to technical changes. Use Part No. for ordering and Type for specification purposes.



Please note - not all products listed on this page may have this approval. Please see www.HellermannTyton.com for the latest approvals.

Routing, Protection and Insulation

Wiring Duct

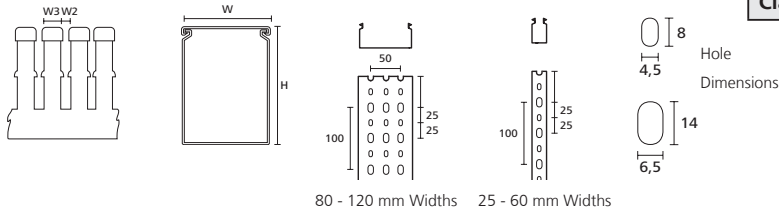
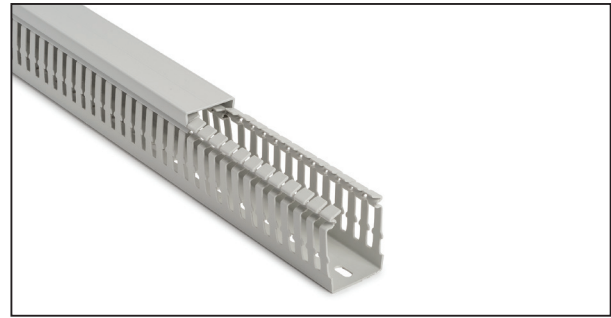
Halogen-Free Wiring Duct

HelaDuct HTWD-HF Duct - General Purpose

HelaDuct HTWD-HF wiring duct is used to route and protect wires in control panels and switching systems where there are high demands on personal or material safety in case of fire, such as in public transport, tunnels, data processing centers or public buildings. Snap-on covers are included with corresponding duct sizes to ensure complete wire protection.

Features and Benefits

- Narrow slots suitable for small-diameter wires.
- Fingers can be removed with no sharp edges at pre-notched snap-off points.
- Duct covers hold securely even in a vertical position and under vibration.
- Base perforation according to DIN EN 50085.



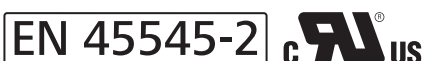
MATERIAL	Acrylonitrile Butadiene Styrene alloyed with Polycarbonate (PC/ABS)
Operating Temperature	-13°F to +194°F (-25°C to +90°C)
Flammability	UL 94 V0
EN 45545-2 Classification	R22 HL2, R23 HL2



80 - 120 mm Widths 25 - 60 mm Widths

PART NO.	TYPE	Width (W) in. (mm)	Height (H) in. (mm)	Width (W2) in. (mm)	Width (W3) in. (mm)	Length (L) ft (m)	Color	Pkg. Qty. ft (m)
183-22525*	HTWD-HF-25X25	1.1 (25.0)	1.1 (25.0)	0.2 (6.0)	0.3 (6.5)	6.6 (2.0)	Gray	164.0 (50.0)
183-22540*	HTWD-HF-25X40	1.1 (25.0)	1.6 (40.0)	0.2 (6.0)	0.3 (6.5)	6.6 (2.0)	Gray	157.4 (48.0)
183-25060*	HTWD-HF-25X60	1.1 (25.0)	2.4 (60.0)	0.2 (6.0)	0.3 (6.5)	6.6 (2.0)	Gray	196.8 (60.0)
183-22580*	HTWD-HF-25X80	1.1 (25.0)	3.2 (80.0)	0.2 (6.0)	0.3 (6.5)	6.6 (2.0)	Gray	65.6 (20.0)
183-24025*	HTWD-HF-40X25	1.6 (40.0)	1.1 (25.0)	0.2 (6.0)	0.3 (6.5)	6.6 (2.0)	Gray	157.4 (48.0)
183-24040*	HTWD-HF-40X40	1.6 (40.0)	1.6 (40.0)	0.2 (6.0)	0.3 (6.5)	6.6 (2.0)	Gray	164.0 (50.0)
183-24060*	HTWD-HF-40X60	1.6 (40.0)	2.4 (60.0)	0.2 (6.0)	0.3 (6.5)	6.6 (2.0)	Gray	131.2 (40.0)
183-24080*	HTWD-HF-40X80	1.6 (40.0)	3.2 (80.0)	0.2 (6.0)	0.3 (6.5)	6.6 (2.0)	Gray	65.6 (20.0)
183-26040*	HTWD-HF-60X40	2.4 (60.0)	1.6 (40.0)	0.2 (6.0)	0.3 (6.5)	6.6 (2.0)	Gray	131.2 (40.0)
183-26060*	HTWD-HF-60X60	2.4 (60.0)	2.4 (60.0)	0.2 (6.0)	0.3 (6.5)	6.6 (2.0)	Gray	78.7 (24.0)
183-26080*	HTWD-HF-60X80	2.4 (60.0)	3.2 (80.0)	0.2 (6.0)	0.3 (6.5)	6.6 (2.0)	Gray	65.6 (20.0)
183-26010*	HTWD-HF-60X100	2.4 (60.0)	3.9 (100.0)	0.2 (6.0)	0.3 (6.5)	6.6 (2.0)	Gray	39.4 (12.0)
183-28040*	HTWD-HF-80X40	3.2 (80.0)	1.6 (40.0)	0.2 (6.0)	0.3 (6.5)	6.6 (2.0)	Gray	65.6 (20.0)
183-28060*	HTWD-HF-80X60	3.2 (80.0)	2.4 (60.0)	0.2 (6.0)	0.3 (6.5)	6.6 (2.0)	Gray	65.6 (20.0)
183-28080*	HTWD-HF-80X80	3.2 (80.0)	3.2 (80.0)	0.2 (6.0)	0.3 (6.5)	6.6 (2.0)	Gray	39.4 (12.0)
183-28010*	HTWD-HF-80X100	3.2 (80.0)	3.9 (100.0)	0.2 (6.0)	0.3 (6.5)	6.6 (2.0)	Gray	32.8 (10.0)
183-22040*	HTWD-HF-100X40	3.9 (100.0)	1.6 (40.0)	0.2 (6.0)	0.3 (6.5)	6.6 (2.0)	Gray	65.6 (20.0)
183-21060*	HTWD-HF-100X60	3.9 (100.0)	2.4 (60.0)	0.2 (6.0)	0.3 (6.5)	6.6 (2.0)	Gray	52.4 (16.0)
183-21010*	HTWD-HF-100X100	3.9 (100.0)	3.9 (100.0)	0.2 (6.0)	0.3 (6.5)	6.6 (2.0)	Gray	26.2 (8.0)
183-21260*	HTWD-HF-120X60	4.7 (120.0)	2.4 (60.0)	0.2 (6.0)	0.3 (6.5)	6.6 (2.0)	Gray	39.4 (12.0)
183-21280*	HTWD-HF-120X80	4.7 (120.0)	3.2 (80.0)	0.2 (6.0)	0.3 (6.5)	6.6 (2.0)	Gray	52.4 (16.0)

Dimensions are approximate and subject to technical changes. Use Part No. for ordering and Type for specification purposes.
*This product meets UL standards.



Please note - not all products listed on this page may have this approval. Please see www.Hellermann.Tyton.com for the latest approvals.

Halogen-Free Wiring Duct

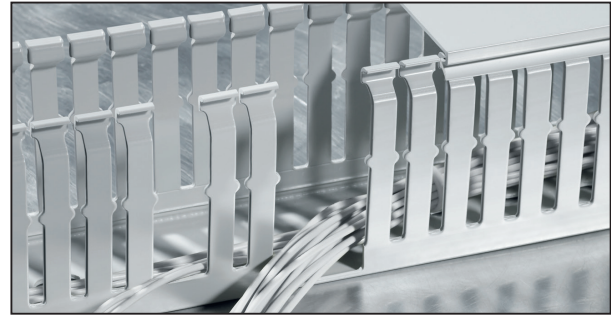
HelaDuct HTWD-HF Duct for Rail (DIN sizes)

HellermannTyton HTWD-HF halogen-free ducts are used wherever there are high demands on personal or material safety, such as public transport, tunnels, escalators and data processing centers. Snap-on covers are included with corresponding duct sizes to ensure complete wire protection. Base perforation according to DIN EN 50085.

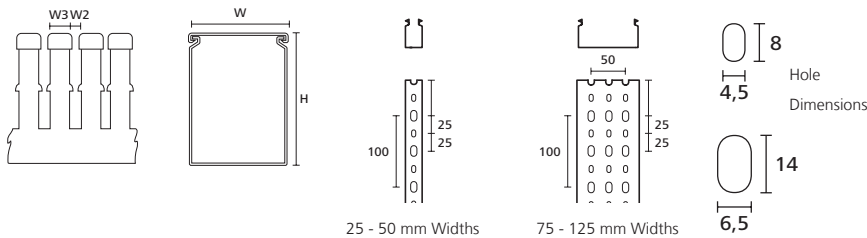
Note: Halogen-free PC+ABS is not resistant to all oils and greases.

Features and Benefits

- Excellent fire-safety characteristics.
- Narrow slots suitable for small-diameter wires.
- Fingers can be removed with no sharp edges at pre-notched snap-off points.
- Duct covers hold securely even in a vertical position and under vibration.



MATERIAL	Acrylonitrile Butadiene Styrene alloyed with Polycarbonate (PC/ABS)
Operating Temperature	-13°F to +194°F (-25°C to +90°C)
Flammability	UL 94 V0
EN 45545-2 Classification	R22 HL2, R23 HL2



PART NO.	TYPE	Width (W) in. (mm)	Height (H) in. (mm)	Width (W2) in. (mm)	Width (W3) in. (mm)	Length (L) ft (m)	Color	Pkg. Qty. ft (m)
183-12525	HTWD-HF-25X25	1.0 (25.0)	1.0 (25.0)	0.2 (5.0)	0.3 (7.5)	6.6 (2.0)	Gray	157.5 (48)
183-12537	HTWD-HF-25X37.5	1.0 (25.0)	1.5 (37.5)	0.2 (5.0)	0.3 (7.5)	6.6 (2.0)	Gray	177.2 (54)
183-12550	HTWD-HF-25X50	1.0 (25.0)	2.0 (50.0)	0.2 (5.0)	0.3 (7.5)	6.6 (2.0)	Gray	144.4 (44)
183-22575	HTWD-HF-25X75	1.0 (25.0)	3.0 (75.0)	0.2 (5.0)	0.3 (7.5)	6.6 (2.0)	Gray	118.1 (36)
183-13737	HTWD-HF-37.5X37.5	1.5 (37.5)	1.5 (37.5)	0.2 (5.0)	0.3 (7.5)	6.6 (2.0)	Gray	131.2 (40)
183-13750	HTWD-HF-37.5X50	1.5 (37.5)	2.0 (50.0)	0.2 (5.0)	0.3 (7.5)	6.6 (2.0)	Gray	104.9 (32)
183-13775	HTWD-HF-37.5X75	1.5 (37.5)	3.0 (75.0)	0.2 (5.0)	0.3 (7.5)	6.6 (2.0)	Gray	78.4 (24)
183-05037	HTWD-HF-50X37.5	2.0 (50.0)	1.5 (37.5)	0.2 (5.0)	0.3 (7.5)	6.6 (2.0)	Gray	104.9 (32)
183-15050	HTWD-HF-50X50	2.0 (50.0)	2.0 (50.0)	0.2 (5.0)	0.3 (7.5)	6.6 (2.0)	Gray	137.8 (42)
183-15075	HTWD-HF-50X75	2.0 (50.0)	3.0 (75.0)	0.2 (5.0)	0.3 (7.5)	6.6 (2.0)	Gray	91.9 (28)
183-17550	HTWD-HF-75X50	3.0 (75.0)	2.0 (50.0)	0.2 (5.0)	0.3 (7.5)	6.6 (2.0)	Gray	65.6 (28)
183-17575	HTWD-HF-75X75	3.0 (75.0)	3.0 (75.0)	0.2 (5.0)	0.3 (7.5)	6.6 (2.0)	Gray	78.7 (24)
183-11050	HTWD-HF-100X50	3.9 (100.0)	2.0 (50.0)	0.2 (5.0)	0.3 (7.5)	6.6 (2.0)	Gray	65.6 (20)
183-11075	HTWD-HF-100X75	3.9 (100.0)	3.0 (75.0)	0.2 (5.0)	0.3 (7.5)	6.6 (2.0)	Gray	52.5 (16)
183-12257	HTWD-HF-125X75	4.9 (125.0)	3.0 (75.0)	0.2 (5.0)	0.3 (7.5)	6.6 (2.0)	Gray	52.5 (16)

Dimensions are approximate and subject to technical changes. Use Part No. for ordering and Type for specification purposes.



Please note - not all products listed on this page may have this approval. Please see www.HellermannTyton.com for the latest approvals.

Routing, Protection and Insulation

Wiring Duct

Flexible Duct

HelaDuct Flex

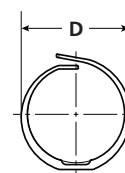
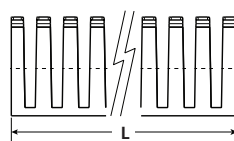
HelaDuct Flex provides an extremely flexible method of routing wires in restricted-space applications. Smooth, overlapping, circular finger pattern reduces wire abrasion and eliminates the need for a separate cover in order to maintain wires when installed at angles greater than 90 degrees. Quick and easy inspection, access and removal of wires reduces installation and maintenance time. Available with adhesive foam strip for temporary positioning or non-adhesive back.

Features and Benefits

- Highly flexible design saves space and allows bending at angles above 90 degrees, making it well suited for confined spaces.
- Overlapping circular fingers eliminate need for a separate cover to retain wires and make insertion and removal of wires fast and easy.
- Smooth finger edges eliminate abrasion that can damage wires.
- Slotted finger pattern provides easy visibility to wires and allows heat to dissipate.



MATERIAL	Polypropylene (PP)
Operating Temperature	-4°F to +158°F (-20°C to +70°C)
Flammability	UL 94 V0 (excluding adhesive)



PART NO.	TYPE	Mounting Method	Diameter (D) in. (mm)	Length (L) in. (mm)	Color	Pkg. Qty.
164-11008*	HelaDuct Flex10	Screw Mounting	0.4 (10.0)	19.7 (500.0)	White	100
164-11108*	HelaDuct Flex10SK	Screw Mounting and Adhesive	0.4 (10.0)	19.7 (500.0)	White	100
164-21008*	HelaDuct Flex20	Screw Mounting	0.8 (20.0)	19.7 (500.0)	White	70
164-21108*	HelaDuct Flex20SK	Screw Mounting and Adhesive	0.8 (20.0)	19.7 (500.0)	White	70
164-31008*	HelaDuct Flex30	Screw Mounting	1.2 (30.0)	19.7 (500.0)	White	40
164-31108*	HelaDuct Flex30SK	Screw Mounting and Adhesive	1.2 (30.0)	19.7 (500.0)	White	40
164-41008*	HelaDuct Flex40	Screw Mounting	1.6 (40.0)	19.7 (500.0)	White	24
164-41108*	HelaDuct Flex40SK	Screw Mounting and Adhesive	1.6 (40.0)	19.7 (500.0)	White	24

Dimensions are approximate and subject to technical changes. Use Part No. for ordering and Type for specification purposes.

*This product meets UL standards.

HelaDuct Flex Material Properties

Physical Properties	Material	Method/Result
Continuous Operating Temperature	Polypropylene	-20°C to 70°C, -4°F to 158°F
Heat Deflection Temperature	Polypropylene	ISO 75; 60°C, 140°F
Material Flame Resistance	Polypropylene	UL 94 V0

HelaDuct Flex Wire Capacities

Description	Duct Diameter (mm)	WIRE O.D.					
		12 AWG	2.5mm ²	16 AWG	1.5mm ²	18 AWG	0.75mm ²
HelaDuct Flex10	10	4		6		9	
HelaDuct Flex10SK		4		6		9	
HelaDuct Flex20	20	14		22		32	
HelaDuct Flex20SK		14		22		32	
HelaDuct Flex30	30	34		50		67	
HelaDuct Flex30SK		34		50		67	
HelaDuct Flex40	40	60		81		-	
HelaDuct Flex40SK		60		81		-	

Formula used to calculate fill capacity: Number of wires = duct area / (1.57 x (wire o.d.)²) or duct area x (0.637/(wire o.d.)²) * 50% Fill Capacity

Routing, Protection and Insulation

Wiring Duct

Halogen-Free Wire Capacities

Duct WxH mm	Duct Area		WIRE O.D.									
	Square mm	Square in.	ELECTRICAL							DATA		
			10 AWG	12 AWG	14 AWG		16 AWG	18 AWG	22 AWG	Twisted Pair 24 AWG Unshielded		
					4 Pr. CAT 5	4 Pr. CAT 6				4 Pr. CAT 6a		
0.176	0.158	0.165	0.139	0.125	0.113	0.065	0.217	0.240	0.354			
HALOGEN-FREE DUCT (General Purpose)												
25 x 25	24.6	1.0	17	21	19	27	34	41	124	11	9	4
25 x 40	39.4	1.6	27	34	31	43	54	66	198	18	15	7
25 x 60	59.1	2.3	41	50	46	65	80	98	297	27	22	10
25 x 80	78.7	3.1	54	67	62	87	107	131	397	36	29	13
40 x 25	39.4	1.5	27	34	31	43	54	66	198	18	15	7
40 x 40	63.0	2.5	43	54	49	69	86	105	317	28	23	11
40 x 60	94.5	3.7	65	81	74	104	129	157	476	43	35	16
40 x 80	126.0	5.0	87	107	98	139	172	210	635	57	47	21
60 x 40	94.5	3.7	65	81	74	104	129	157	476	43	35	16
60 x 60	141.7	5.6	97	121	111	156	193	236	714	64	52	24
60 x 80	189.0	7.4	130	161	148	208	257	315	952	85	70	32
60 x 100	236.2	9.3	162	201	185	260	322	394	1190	107	87	40
80 x 40	126.0	5.0	87	107	98	139	172	210	635	57	47	21
80 x 60	189.0	7.4	130	161	148	208	257	315	952	85	70	32
80 x 80	252.0	9.9	173	215	197	278	343	420	1269	114	93	43
80 x 100	315.0	12.4	216	268	246	347	429	525	1586	142	116	53
100 x 40	157.5	6.2	108	134	123	173	214	262	793	71	58	27
100 x 60	236.2	9.3	162	201	185	260	322	394	1190	107	87	40
100 x 80	315.0	12.4	216	268	246	347	429	525	1586	142	116	53
100 x 100	393.7	15.5	270	336	308	434	536	656	1983	178	145	67
120 x 60	283.5	11.2	195	242	222	312	386	472	1428	128	105	48
120 x 80	378.0	14.9	260	322	295	416	515	630	1904	171	140	64

Formula used to calculate fill capacity: Number of wires = duct area / (1.57 x (wire o.d.)²) or duct area x (0.637/(wire o.d.)²) * 50% Fill Capacity

Halogen-Free Wire Capacities

Duct WxH mm	Duct Area		WIRE O.D.									
	Square mm	Square in.	ELECTRICAL							DATA		
			10 AWG	12 AWG	14 AWG		16 AWG	18 AWG	22 AWG	Twisted Pair 24 AWG Unshielded		
					0.176	0.158				0.165	0.139	0.125
0.217	0.240	0.354										
HALOGEN-FREE DUCT (DIN Sizes for Rail)												
25 x 25	24.6	1.0	17	21	19	27	34	41	124	11	9	4
25 x 37.5	36.9	1.5	25	31	29	41	50	62	186	17	14	6
25 x 50	49.2	1.9	34	42	38	54	67	82	248	22	18	8
25 x 75	73.8	2.9	51	63	58	81	101	123	372	33	27	13
37.5 x 37.5	55.4	2.2	38	47	43	61	75	92	279	25	20	9
37.5 x 50	73.8	2.9	51	63	58	81	101	123	372	33	27	13
37.5 x 75	110.7	4.4	76	94	87	122	151	185	558	50	41	19
50 x 37.5	73.8	2.9	51	63	58	81	101	123	372	33	27	13
50 x 50	98.4	3.9	68	84	77	108	134	164	496	44	36	17
50 x 75	147.6	5.8	101	126	115	163	201	246	744	67	55	25
75 x 50	147.2	5.8	101	125	115	162	201	245	742	67	54	25
75 x 75	221.5	8.7	152	189	173	244	302	369	1116	100	82	38
100 x 50	196.8	7.7	135	168	154	217	268	328	992	89	73	33
100 x 75	295.3	11.6	203	252	231	325	402	492	1487	133	109	50
125 x 75	369.1	14.5	254	315	289	407	503	615	1859	167	136	63

Formula used to calculate fill capacity: Number of wires = duct area / (1.57 x (wire o.d.)²) or duct area x (0.637/(wire o.d.)²) * 50% Fill Capacity

Halogen-Free Material Properties

Physical Properties	Material	Test Method	Test Units	Test Results
Modulus of Elasticity (Tension)	Polycarbonate/ ABS Styrene (PC/ABS)	ISO 527-1,2	MPa (psi)	2650 (384,350)
Continuous Operating Temperature RTI Strength at 1.5mm	Polycarbonate/ ABS Styrene (PC/ABS)	UL746B	°C (°F)	-25 C to +90 C (-13 F to +194 F)
Heat Deflection Temperature MPa (261 psi) 1.8 MPa (261 psi) Unannealed	Polycarbonate/ ABS Styrene (PC/ABS)	ISO 75-2/A	°C (°F)	98 (208)
Tensile Strength at Break	Polycarbonate/ ABS Styrene (PC/ABS)	ISO 527-1,2	MPa (psi)	53 (7687)
Izod Impact Strength (23°C)	Polycarbonate/ ABS Styrene (PC/ABS)	ISO 180-A	kJ/m ² (ft-lb/in ²)	40 (19.0)
Flame Resistance	Polycarbonate/ ABS Styrene (PC/ABS)	UL 94	-	V0
UL Standard 94	Polycarbonate/ ABS Styrene (PC/ABS)	UL 94	1.5mm	V0

Routing, Protection and Insulation

Wiring Duct

PVC Wiring Duct Material Properties

Physical Properties	Material	ASTM Method	Test Units	Test Results
Specific Gravity (Gray)	PVC	D-792	-	1.4
Durometer Hardness	PVC	D-2240	Shore Hardness	77D
Flexural Strength	PVC	D-790	psi	9,900
Modulus of Elasticity (Tension)	PVC	D-638	psi	351,000
Continuous Operating Temperature	PVC	UL746B	°F (°C)	122 (50)
Heat Deflection Temperature (264 psi)	PVC	D-648	°F (°C)	161 (72)
Tensile Strength (+73°F)	PVC	D-638	psi	6,500
Izod Impact Strength (+73°F)	PVC	D-256	ft. lbs./in. notch	15
Flame Resistance	PVC	D-635	-	Self-extinguishing
UL Standard 94	PVC	-	.029 and .062	94V-O

PVC Wiring Duct Wire Capacities

Duct Size (W"xH")	Duct Area (Sq. In.)	ELECTRICAL							DATA		
		10 AWG	12 AWG	14 AWG	14 AWG	16 AWG	18 AWG	22 AWG	CAT 5E	CAT 6	CAT 6A
		WIRE O.D.									
		0.176	0.158	0.165	0.139	0.125	0.113	0.065	0.219	0.240	0.354
0.5x0.5	0.18	4	5	4	6	7	9	27	2	2	1
0.5x1	0.38	8	10	9	13	15	19	57	5	4	2
0.75x0.75	0.28	6	7	7	9	11	14	42	4	3	1
1x1	0.735	15	19	17	24	30	37	111	10	8	4
1x1.5	1.135	23	29	27	37	46	57	171	15	13	6
1x2	1.515	31	39	35	50	62	76	228	20	17	8
1x3	2.22	46	57	52	73	90	111	335	30	25	11
1x4	2.936	60	75	69	97	120	146	443	40	32	15
1.5x1	1.205	25	31	28	40	49	60	182	16	13	6
1.5x1.5	1.85	38	47	43	61	75	92	279	25	20	9
1.5x2	2.475	51	63	58	82	101	123	373	33	27	13
1.5x3	3.669	75	94	86	121	150	183	553	50	41	19
1.5x4	4.881	100	125	114	161	199	243	736	66	54	25
2x1	1.678	35	43	39	55	68	84	253	23	19	9
2x2	3.438	71	88	80	113	140	171	518	47	38	17
2x3	5.122	105	131	120	169	209	255	772	69	57	26
2x4	6.829	140	174	160	225	278	341	1030	92	76	35
2x5	8.488	175	217	199	280	346	423	1280	115	94	43
2.5x3	6.564	135	167	154	216	268	327	990	89	73	33
3x1	2.57	53	66	60	85	105	128	388	35	28	13
3x2	5.36	110	137	125	177	219	268	809	73	59	27
3x3	8.03	165	205	188	265	327	400	1210	109	89	41
3x4	10.72	221	274	251	354	437	535	1617	145	119	55
3x5	13.38	275	341	313	441	546	668	2017	181	148	68
4x2	7.288	150	186	171	240	297	364	1099	99	81	37
4x3	10.932	225	279	256	360	446	545	1648	148	121	56
4x4	14.62	301	373	342	482	596	729	2204	198	162	74
4x5	18.27	375	466	427	602	745	911	2754	247	202	93

Formula used to calculate fill capacity: Number of wires = duct area / (1.57 x (wire o.d.)²) or duct area x (0.637/(wire o.d.)²) * 50% Fill Capacity

In addition to its full line of wiring duct and accessories, HellermannTyton offers a broad range of protection, identification and fastening solutions.

Flexiform Edge Protection Grommet Strip

HellermannTyton Flexiform grommet is a unique, continuous wire protection product which conforms and fits into holes of all shapes and sizes. No special tools needed, Flexiform easily cuts to length with scissors, eliminating waste and helping to keep grommet stock to a minimum. HellermannTyton Flexiform grommet can be used on any type of material, including wood, steel, aluminum, plexiglass and glass. It is available for thicknesses from 0.016" to 0.512".



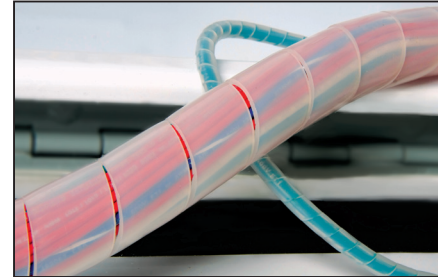
Braided Sleeving

Braided sleeving offers flexible cable protection, resistance from abrasion and ease of application. Expandable sleeving is specially woven to expand when compressed and contract when pulled apart. For optimal fit, HellermannTyton braided sleeving accommodates a variety of cable diameters and is available in different materials to perform in moderate to extreme environments.



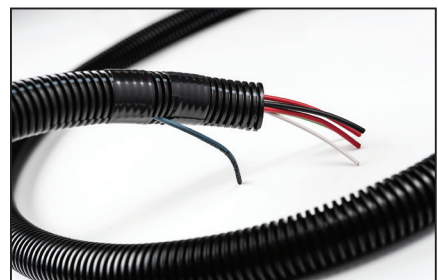
Spiralwrap

Spiralwrap provides cable routing and protection when flexibility around corners and bends is required. Spiralwrap easily wraps around wire and cable bundles to organize, route and protect. Spiralwrap may be used to protect edges of components during the manufacturing process. Offered in many sizes and colors, HellermannTyton Spiralwrap is reusable and resistant to most chemicals and is UL Recognized.



Convolute Tubing

Convolute tubing protects cables, tubing and hoses from abrasion and pinching. HellermannTyton convolute tubing is offered in a variety of sizes and materials. The standard center slit design allows for easy installation and retrofitting. Tubing is available in standard, bulk and dispenser box packaging.



Helawrap

Helawrap flexible sheathing installs effortlessly to route, protect and conceal wires and cables. Helawrap easily wraps around cables with a "zipper-like" motion to protect against abrasion and mechanical stress caused by movement and bending. Helawrap bases and clips secure Helawrap to control panel boxes, enabling routing around corners and tight bends. Available in black and white for general purpose, Helawrap is also offered in a black flame-retardant PA6V0 material. A handy application tool is included in every package for faster installations.



HellermannTyton North American Corporate Headquarters

7930 N. Faulkner Rd, PO Box 245017
Milwaukee, WI 53224-9517
Phone: (414) 355-1130, (800) 537-1512
Fax: (414) 355-7341, (800) 848-9866
email: corp@htamericas.com
www.hellermann.tyton.com

IATF 16949, AS9100, ISO 9001 and ISO14001 certified

Warranty Policy – HellermannTyton products are warranted to be free from defects in material and workmanship at the time sold by us; but our obligation under this warranty and that of the seller is limited to the replacement of the product, and neither we nor the seller are bound by any other warranty, expressed, implied or statutory. Under no circumstances are we or the seller liable for any loss, damage, expenses or consequential damages of any kind arising out of the use or inability to use these products. All are sold with the understanding that the user will test them in actual use and determine their adaptability for the intended uses.

HellermannTyton Canada

Unit #4, 205 Industrial Parkway North
Aurora, Ontario L4G 4C4 Canada
Phone: (800) 661-2461
Fax: (800) 390-3904
email: sales@hellermanntyton.ca

HellermannTyton Mexico

Anillo Periferico Sur 7980 Edificio 6A
Parque Industrial Tecnológico II
Santa María Tequepexpan
Tlaquepaque, Jalisco, Mexico 45601
Phone: 011-52-33-3-133-9880
Fax: 011-52-33-3-133-9861
email: info@htamericas.com.mx

ISO 9001 certified

Looking for pricing, stock, or lifecycle information?

Click below to explore more details on WIN SOURCE:

 [View 164-11008](#) on WIN SOURCE

 [HellermannTyton](#) Information

Optimize Your Supply Chain with WIN SOURCE Solutions

-  Global Sourcing Solution
-  Obsolete Management
-  Cost Control Management
-  Shortage Management
-  Alternative Solution
-  Excess Inventory Management