



**THE DATASHEET OF  
DPX1608LL80R2455A**



**Description: 1608 2.4G&5GHz Diplexer**

**PART NUMBER: DPX1608LL80R2455A**

**Features:**

- Compact size : 1.6x0.8x0.6mm
- RoHS compliant

**Applications:**

- WLAN, 802.11a/b/g/n
- ISM Band

**ELECTRICAL SPECIFICATIONS**

DESCRIPTION	VALUE	
Pass Band	Low Band	High Band
	2400~2500MHz	4900~6000MHz
Insertion loss	0.7dB (Max) at 25°C	0.8dB (Max) at 25°C
Return-Loss	10.0dB(Min)	12.0dB(Min)
Attenuation	20dB(Min).@4.8~5GHz 20dB(Min).@7.2~7.5GHz	28dB(Min).@860~960MHz 23dB(Min).@1545~1605MHz 23dB(Min).@1710~1990GHz 28dB(Min).@2.17GHz 8dB(Min).@8.1GHz 15dB(Min).@8.82~9.8GHz 27dB(Min).@9.8~11.8GHz
Isolation	Middle Band to High Band: 20dB (Min). @4.9~5.95GHz	
Operating Temperature	-40 ~ 85°C	
Dimension	1.6 x 0.8 x 0.6mm	

In the effort to improve our products, we reserve the right to make changes judged to be necessary.

CONFIDENTIAL AND PROPRIETARY INFORMATION

This document contains confidential and proprietary information of Pulse Electronics, Inc. (Pulse) and is protected by copyright, trade secret and other state and federal laws. Its receipt or possession does not convey any rights to reproduce, disclose its contents, or to manufacture, use or sell anything it may describe. Reproduction, disclosure or use without specific written authorization of Pulse is strictly forbidden.

For more information:



Pulse Worldwide Headquarters  
15255 Innovation Drive #100  
San Diego, CA 92128  
USA  
Tel:1-858-674-8100

Pulse/Larsen Antennas  
18110 SE 34<sup>th</sup> St Bldg 2 Suite 250  
Vancouver, WA 98683  
USA  
Tel: 1-360-944-7551

Europe Headquarters  
Pulse GmbH & Do, KG  
Zeppelinstrasse 15  
Herrenberg, Germany  
Tel: 49 7032 7806 0

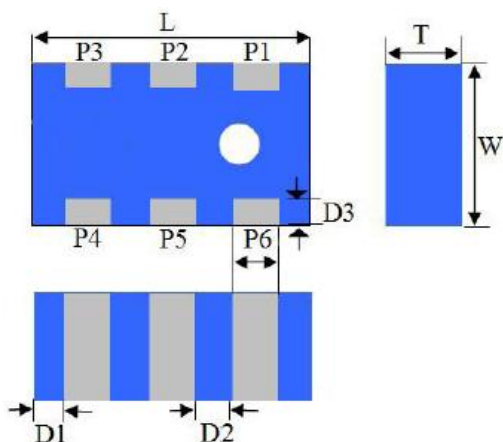
Pulse (Suzhou) Wireless Products Co, Inc.  
99 Huo Ju Road(#29 Bldg,4<sup>th</sup> Phase  
Suzhou New District  
Jiangsu Province, Suzhou 215009 PR China  
Tel: 86 512 6807 9998

**Description: 1608 2.4G&5GHz Diplexer**

**PART NUMBER: DPX1608LL80R2455A**

**MECHANICAL DIMENSION**

**Outline**



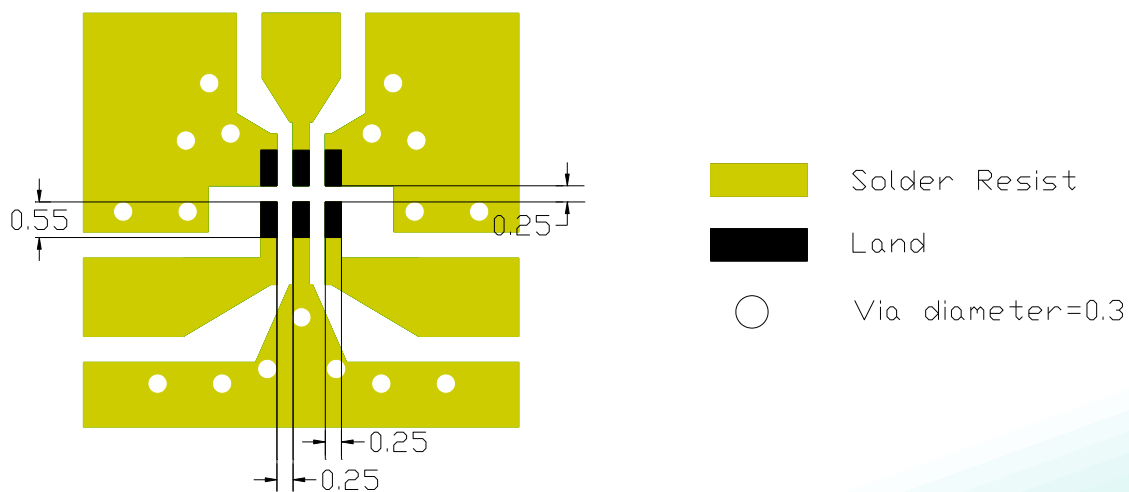
**Termination**

Terminal name	Function
P1	Low band
P2	GND
P3	High band
P4	GND
P5	Common
P6	GND

**Mechanical**

	Dimension
L (mm)	1.60±0.15
W (mm)	0.80±0.15
T (mm)	0.60±0.15
P1 (mm)	0.20±0.15
P2 (mm)	0.20±0.15
P3 (mm)	0.20±0.15
P4 (mm)	0.20±0.15
P5 (mm)	0.20±0.15
P6 (mm)	0.20±0.15
D1 (mm)	0.20±0.15
D2 (mm)	0.30±0.10
D3 (mm)	0.15±0.10

**Reference design of EVB**



Line width should be designed to match 50Ω characteristic impedance, depending on PCB material and thickness.

In the effort to improve our products, we reserve the right to make changes judged to be necessary.

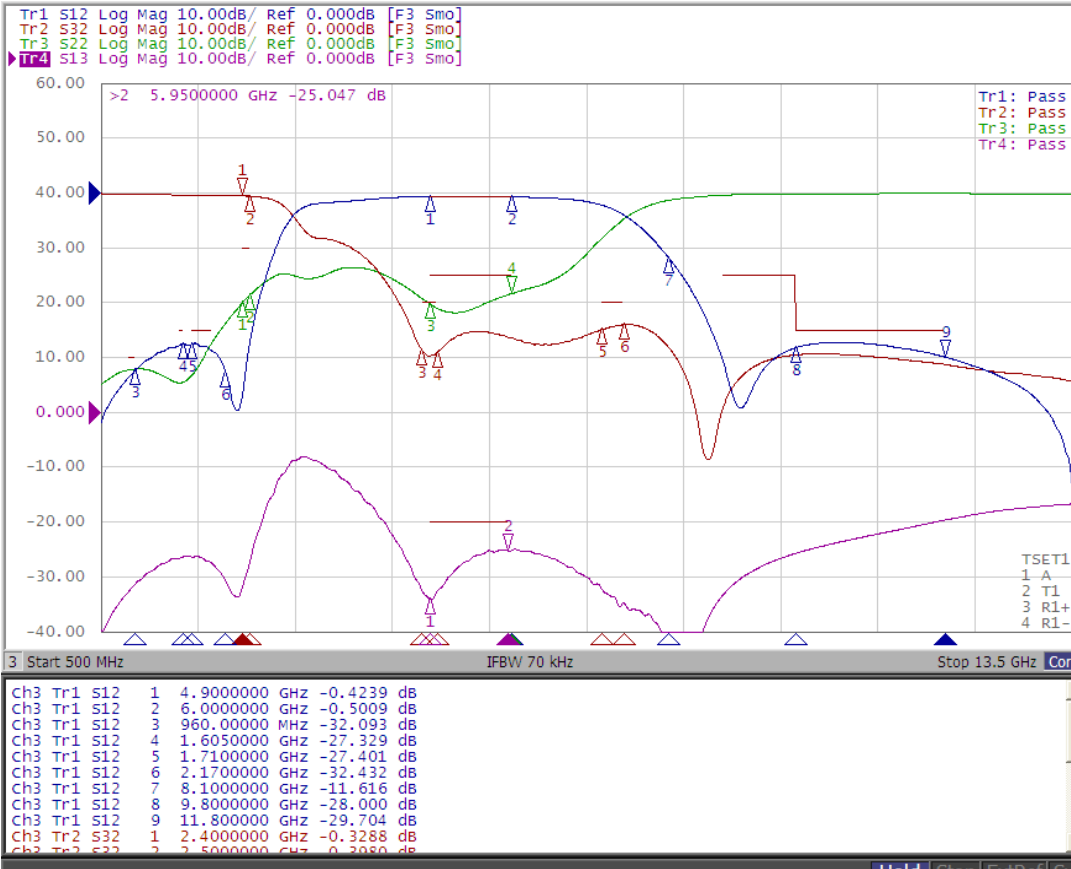
CONFIDENTIAL AND PROPRIETARY INFORMATION

This document contains confidential and proprietary information of Pulse Electronics, Inc. (Pulse) and is protected by copyright, trade secret and other state and federal laws. Its receipt or possession does not convey any rights to reproduce, disclose its contents, or to manufacture, use or sell anything it may describe. Reproduction, disclosure or use without specific written authorization of Pulse is strictly forbidden.

**Description: 1608 2.4G&5GHz Diplexer**

**PART NUMBER: DPX1608LL80R2455A**

**ELECTRICAL PERFORMANCES**



- Measured on Agilent E5071C Network Analyzer
- Port 1, 2 and 3 in Network Analyzer is connected to device as below
- ◆ Port 1 : High band port
- ◆ Port 2 : Common port
- ◆ Port 3 : Low band port
- ◆ S22 : Return loss for low and high band
- ◆ S32 : Insertion loss and attenuation for low band
- ◆ S12 : Insertion loss and attenuation for high band

Frequency Characteristics

In the effort to improve our products, we reserve the right to make changes judged to be necessary.

CONFIDENTIAL AND PROPRIETARY INFORMATION

This document contains confidential and proprietary information of Pulse Electronics, Inc. (Pulse) and is protected by copyright, trade secret and other state and federal laws. Its receipt or possession does not convey any rights to reproduce, disclose its contents, or to manufacture, use or sell anything it may describe. Reproduction, disclosure or use without specific written authorization of Pulse is strictly forbidden.

**Description:** 1608 2.4G&5GHz Diplexer



**PART NUMBER:** DPX1608LL80R2455A

### REVISION HISTORY

Revision	Date	Description
Version 1	Oct. 06, 2020	- New issue

## Looking for pricing, stock, or lifecycle information?

Click below to explore more details on WIN SOURCE:

-  [View DPX1608LL80R2455A on WIN SOURCE](#)
-  [PulseLarsen Antennas Information](#)

## Optimize Your Supply Chain with WIN SOURCE Solutions

-  Global Sourcing Solution
-  Obsolete Management
-  Cost Control Management
-  Shortage Management
-  Alternative Solution
-  Excess Inventory Management