

ARN Series – Mono-Lever Switches

Key features:

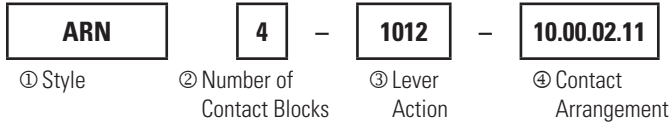
- Mono-Lever Switches Ø 1-13/64" (30mm)
- Contact Blocks Rated for 600V, 10A
- Available in 2-, 3-, and 4-positions.
- Maintained and spring-return modes available.
- Models available with interlock mechanism to prevent inadvertent actuation.



Specifications

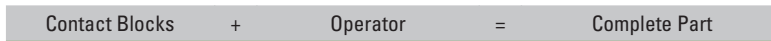
Operating Temperature	-25° to 50°C (without freezing)	
Insulation Resistance	100MΩ	
Contact Rating	Rated Voltage: Current	
	110VDC: 3A 24V AC/DC: 10A 120VAC: 10A 240VAC: 6A 480VAC: 2A 600VAC: 1A	
	Insulation Voltage	600V AC/DC
	Rated Thermal Current	10A
Electrical Life	Over 500,000 operations	

Part Numbering Guide (Assembled)



	Description	Code	Remarks
① Style	Standard Lever	ARN	
	Short Lever	ARNS	Interlocking lever prevents inadvertent operation.
	Interlocking Lever	ARNL	
② No. of Contact Blocks	—	1	Each contact block contains two independent contacts.
		2	
		3	
		4	
③ Lever Action	Blocked	0	Specify in this order: Up.Right.Down.Left
	Maintained	1	
	Spring Return	2	
④ Contact Arrangement	No contacts	00	Specify the number of contacts to be activated in all active (non-blocked) positions: Up.Right.Down.Left For blocked positions use code: 00
	1 NO contact	10	
	1 NC contact	01	
	1 NO and 1 NC contact	11	
	2 NO contacts	20	
	2 NC contacts	02	

Mono-Lever Switches (Sub-Assembled)



Standard Mono-Lever Operators

Style	Lever Operation Mode	Part Number
Standard Lever	2-Position manual return	ARNO-1010-B
	3-Position manual return	ARNO-1110-B
	4-Position manual return	ARNO-1111-B
	2-Position spring return	ARNO-2020-B
	3-Position spring return	ARNO-2220-B
	4-Position spring return	ARNO-2222-B
Short Lever	2-Position manual return	ARNSO-1010-B
	3-Position manual return	ARNSO-1110-B
	4-Position manual return	ARNSO-1111-B
	2-Position spring return	ARNSO-2020-B
	3-Position spring return	ARNSO-2220-B
	4-Position spring return	ARNSO-2222-B
Interlocking Lever	2-Position manual return	ARNLO-1010-B
	3-Position manual return	ARNLO-1110-B
	4-Position manual return	ARNLO-1111-B
	2-Position spring return	ARNLO-2020-B
	3-Position spring return	ARNLO-2220-B
	4-Position spring return	ARNLO-2222-B

Contact Blocks

Style	Contact Arrangement	Part Number
	2NO contacts 1NO & 1NC contact 2NC contacts 1NO early make contact	BR-1E BR-2E BR-3E BR-1EM



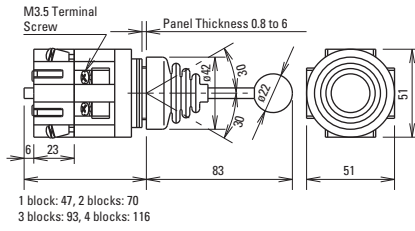
To calculate the number of contact blocks required, add the number of NO and NC contacts on each pair of adjoining positions (up + right, right + down, down + left, and left + up). The largest of the four sums is the number of contact blocks required. Up to four contact blocks can be mounted.

Replacement Parts

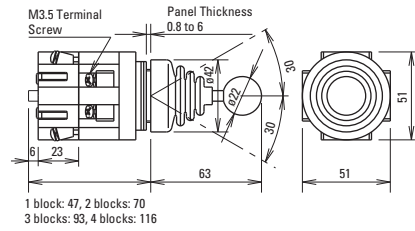
Style	Part Number
Bellows	ARNO, ARNSO (standard & short lever) ARN-BL
	ARNLO (Interlocking) ARNL-BL (comes in 2 pieces)
Knob (ball)	All Models Knob (ball) ARNB-B

Dimensions – ARN Series

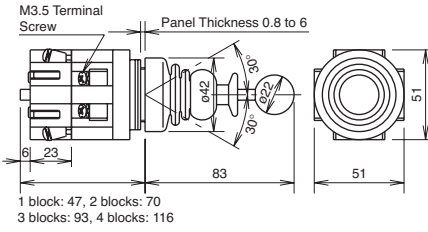
ARNO



ARNSO



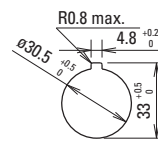
ARNLO



ARNO

ARNSO

ARNLO



Looking for pricing, stock, or lifecycle information?

Click below to explore more details on WIN SOURCE:

- ⊖ [View ARNS4-1111-20.20.20.20 on WIN SOURCE](#)
- ⊖ [IDEC Information](#)

Optimize Your Supply Chain with WIN SOURCE Solutions

- ✓ Global Sourcing Solution
- ✓ Obsolete Management
- ✓ Cost Control Management
- ✓ Shortage Management
- ✓ Alternative Solution
- ✓ Excess Inventory Management