



**THE DATASHEET OF
VLR175UF**



Specification Status: Preliminary

Maximum Electrical Rating
Operating Voltage: 12Vdc
Interrupt Current: 100A

Leads: Nickel
0.125mm nominal thickness

Tape: None

Solder: Lead-free

Marking: None

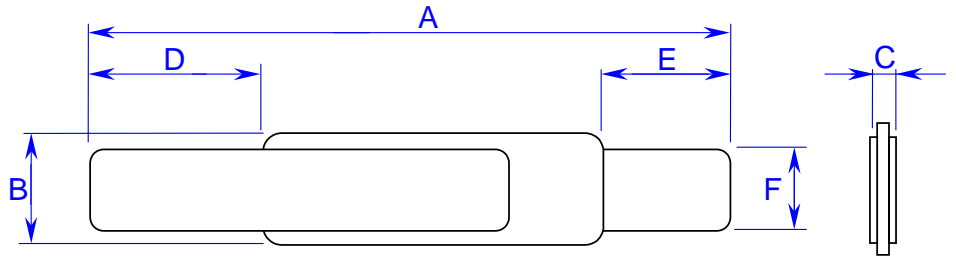


TABLE I. DIMENSIONS:

	A		B		C		D		E		F	
	MIN	MAX	MIN	MAX	MIN	MAX	MIN	MAX	MIN	MAX	MIN	MAX
mm:	23.0	24.5	2.9	3.1	---	0.7	5.2	7.5	4.3	5.7	2.4	2.6
in*:	(0.91)	(0.96)	(0.11)	(0.12)	--	(0.03)	(0.20)	(0.30)	(0.17)	(0.22)	(0.09)	(0.10)

*Rounded off approximation

TABLE II. PERFORMANCE RATINGS: As measured in Mueller Kelvin Clips model BU-75K.

I HOLD	CURRENT TRIP LIMITS								TIME TO TRIP		REFERENCE RESISTANCE		ONE-HOUR POST-TRIP RESISTANCE		TRIPPED-STATE POWER DISSIPATION
	AMPS 25°C HOLD		AMPS AT 0°C		AMPS AT 25°C		AMPS AT 60°C		AMPS AT 80°C		SECONDS AT 25°C, 8.75A		OHMS AT 25°C		WATTS AT 25°C, 12V MAX
	HOLD	TRIP	HOLD	TRIP	HOLD	TRIP	HOLD	TRIP	HOLD	TRIP	MIN	MAX	MIN	MAX	MAX
1.75	2.4	5.6	1.75	4.2	0.8	2.0	---	---	---	5	0.017	0.031	0.017	0.062	1.4

Agency Recognitions:
Reference Documents:
Precedence:
Effectivity:
CAUTION:

UL, TUV, CSA
PS300
This specification takes precedence over documents referenced herein.
Reference documents shall be the issue in effect on the date of invitation for bid.
Operation beyond the rated voltage or current may result in rupture, electrical arcing or flame.

Materials Information:

ROHS Compliant

Directive 2002/95/EC
Compliant

ELV Compliant

Directive 2000/53/EC
Compliant

Pb-Free



Looking for pricing, stock, or lifecycle information?

Click below to explore more details on WIN SOURCE:

 [View VLR175UF on WIN SOURCE](#)

 [Littelfuse Inc. Information](#)

Optimize Your Supply Chain with WIN SOURCE Solutions

-  Global Sourcing Solution
-  Obsolete Management
-  Cost Control Management
-  Shortage Management
-  Alternative Solution
-  Excess Inventory Management