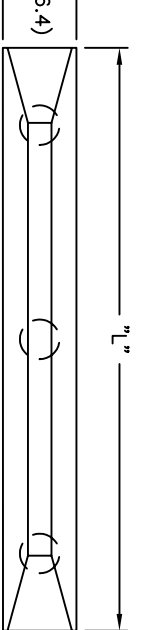


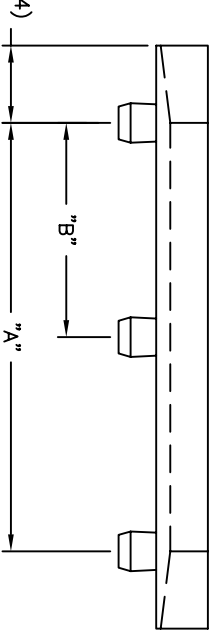


THE DATASHEET OF RN-500-2



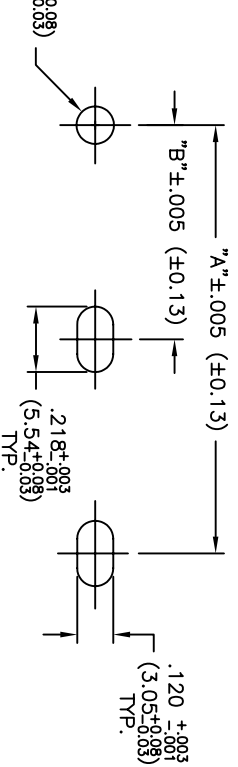


(4.4)



(4.3)

PART NO.	"L"	"A"	"B"
	±.030 (±0.8)	±.024 (±0.6)	±.016 (±0.4)
RN-250-2	2.5 (63.5)	2.0 (50.8)	-
RN-300-2	3.0 (76.2)	2.5 (63.5)	-
RN-350-2	3.5 (88.9)	3.0 (76.2)	-
RN-400-2	4.0 (101.6)	3.5 (88.9)	-
RN-450-2	4.5 (114.3)	4.0 (101.6)	-
RN-500-2	5.0 (127.0)	4.5 (114.3)	-
RN-550-2	5.5 (139.7)	5.0 (127.0)	-
RN-600-2	6.0 (152.4)	5.5 (139.7)	-
RN-650-2	6.5 (164.1)	6.0 (152.4)	-
RN-700-3	7.0 (177.8)	6.5 (164.1)	3.25 (82.2)
RN-750-3	7.5 (190.5)	7.0 (177.8)	3.5 (88.5)
RN-800-3	8.0 (203.2)	7.5 (190.5)	3.75 (94.9)
RN-850-3	8.5 (215.5)	8.0 (203.2)	4.0 (101.6)



TYPICAL MOUNTING HOLES
 PANEL THICKNESS: .047-.085 (1.2-2.2)



RMS-48).
 LON 6/6

ORDER ONLY.

NAMES		SK 12.07.07	TITLE: NARROW CARD GUIDE (RN)				DWG IN	
ENGR		SK 09.28/07					IN(mm)	
DESIGNER		SM 10.04.04					FINAL	
CHECKER		SM 08.09.04	TOLERANCES UNLESS NOTED					
DRAWN		SM 12.20.02	.XX=±.010					
APP'D		SM 11.21.02	.XXX=±.005					
PART #		SM 02.21.02	FRAC=±1/64					
SEE CHART		ENGR DATE	ANG=±1°					
PRINT TYPE			FILE # RN					
CA			MAT'L: SEE NOTES					
			RE: RICHCO, INC.					
			DWN: J.B.					
			APP:					
			DT: 04-08-97					
			DT:					
			RICHCO INC.					
			PO BOX 804238 CHICAGO, 60680					
			(773) 539-4060					

Looking for pricing, stock, or lifecycle information?

Click below to explore more details on WIN SOURCE:

-  [View RN-500-2 on WIN SOURCE](#)
-  [Essentra Components](#) Information

Optimize Your Supply Chain with WIN SOURCE Solutions

-  Global Sourcing Solution
-  Obsolete Management
-  Cost Control Management
-  Shortage Management
-  Alternative Solution
-  Excess Inventory Management