

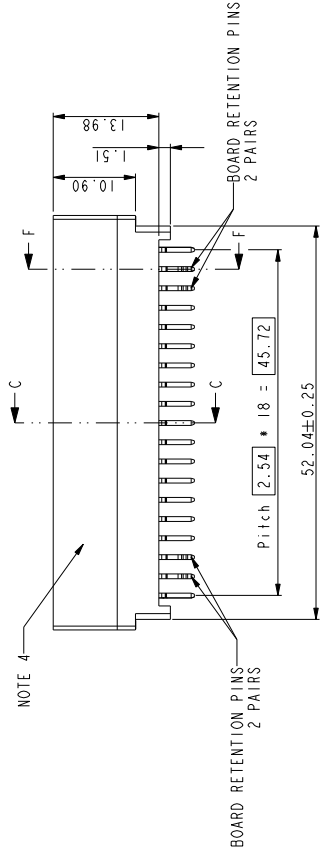
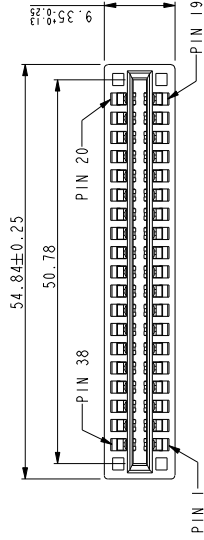


**THE DATASHEET OF  
10046971-004LF**



PRODUCT NO  
10046971-004LF

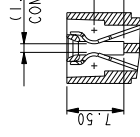
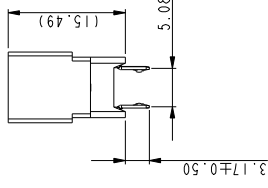
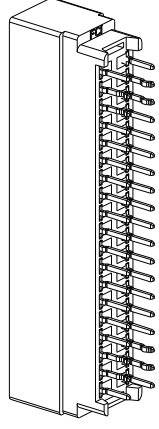
4 3 2



NOTE 4

BOARD RETENTION PINS  
2 PAIRS

BOARD RETENTION PINS  
2 PAIRS



SECTION C-C  
SCALE 1:000

NOTE:

1. MATERIAL:  
HOUSING: HIGH TEMPERATURE THERMOPLASTIC,  
UL 94 V-0 FLAME RETARDANT  
TERMINAL: HIGH CONDUCTIVITY COPPER ALLOY.  
PLATING SPEC. AS BELOW:  
NI 500 $\mu$  UNDER PLATED.  
Au 300 $\mu$  OVER CONTACT AREA (ONE SIDE)  
MATTIE TIN 1200 $\mu$  OVER SOLDERING AREA.
2. PACKING SPEC. GS-14-937
3. PRODUCT SPEC. GS-12-338.
4. TO APPEAR ON THIS SURFACE AS PER GS-24-007.

5. PART NUMBER 10046971-004LF MEETS EUROPEAN UNION DIRECTIVE AND OTHER COUNTRY REGULATIONS AS DESCRIBED IN GS-22-008. THE HOUSING WILL WITHSTAND EXPOSURE TO 260°C PEAK TEMPERATURE FOR 10 SECONDS IN A WAVE SOLDER APPLICATION WITH A CIRCUIT BOARD.

CUSTOMER  
COPY

THIRD ANGLE PROJECTING

DO NOT SCALE DRAWING

GENERAL TOLERANCE

MILLIMETER

INCH

ANGLE

X.X ±0.8

X.XX ±0.25

X.XXX ±0.13

XX ±0.03

.XXX ±0.010

.XXX ±0.005

±3°

NAME

STEVEN WANG

DRAWN

CHECKED

VICTOR LIN

APPROVED

WANG

DATE

REV. 0

PDM: Rev: 0

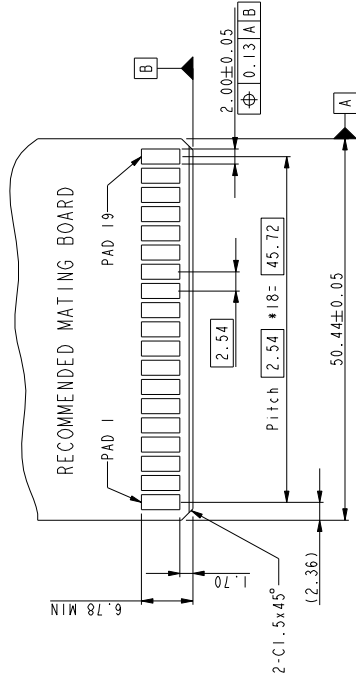
ALL RIGHT RESERVED. REPRODUCTION OR ISSUE TO THIRD PARTIES IN ANY FORM WHATEVER IS NOT PERMITTED WITHOUT WRITTEN AUTHORITY FROM THE PROPRIETOR. PROPERTY OF F C I. COPYRIGHT F C I.

4 3 2

PRODUCT NO  
10046971-004LF

4 3 2

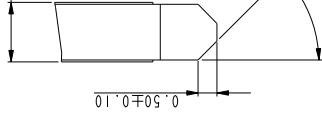
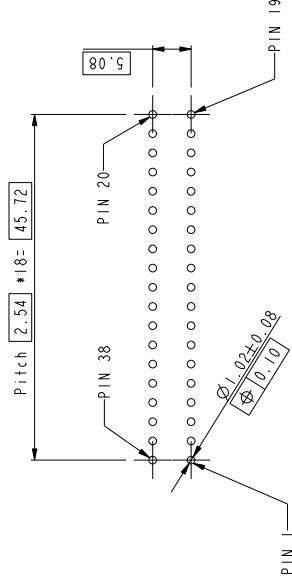
D



SEE DETAIL A



C



DETAIL SCALE 5

B

A

CUSTOMER COPY

DO NOT SCALE DRAWING

GENERAL TOLERANCE		INCH	ANGLE
X.X	±0.8	XX	±0.03
X.XX	±0.25	.XXX	±0.010
X.XXX	±0.13	.XXXX	±0.005

ALL RIGHT RESERVED. REPRODUCTION OR ISSUE TO THIRD PARTIES IN ANY FORM WHATSOEVER IS NOT PERMITTED WITHOUT WRITTEN AUTHORITY FROM THE PROPRIETOR. PROPERTY OF F C I. COPYRIGHT F C I.

4 3 2





THIRD ANGLE PROJECTIVE  
DIMENSIONAL LIMITS APPLY  
PLATING (IF SPECIFIED)

NAME	
DRAWN	STEVEN WANG 06
CHECKED	VICTOR LIN 06
APPROVED	JOSEPH HUI 06

PDM: Rev:0

## Looking for pricing, stock, or lifecycle information?

Click below to explore more details on WIN SOURCE:

-  [View 10046971-004LF on WIN SOURCE](#)
-  [Amphenol FCI Information](#)

## Optimize Your Supply Chain with WIN SOURCE Solutions

-  Global Sourcing Solution
-  Obsolete Management
-  Cost Control Management
-  Shortage Management
-  Alternative Solution
-  Excess Inventory Management